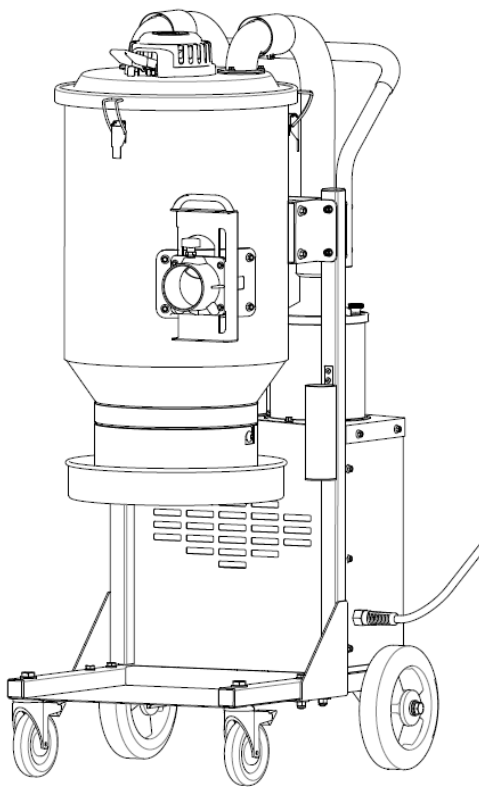




Dust Extractors

HD Vacuum Series COMPLETE MANUAL



www.BARTELLGLOBAL.com



www.BARTELLGLOBAL.com

Bartell Morrison Inc.

170 Traders Blvd E
Mississauga, Ontario, Canada
L4Z 1W7
Tel: (647) 953-4100
Fax: (647) 953-4101

Bartell Morrison USA LLC

200 Commerce Drive, Unit A
Freehold, NJ, USA
07728
Tel: (848) 225-8100
Fax: (848) 225-8101

SPE International Ltd

Honeyholes Lane
Dunholme, Lincoln, England
LN2 3SU
Tel: 01673 860709
Fax: 01673 861119

Innovatech

4701 Allmond Ave
Louisville, Kentucky, USA
40209
Tel: (425) 405-9100
Fax: (425) 405-9101

**ORIGINAL LANGUAGE OPERATING MANUAL FOR
BARTELL DUST EXTRACTORS**

© 2021 Bartell Morrison Inc.

No part of this work may be reproduced or transmitted in any form or by any means, electronic or mechanical, including photocopying and recording, or by any information storage or retrieval system without the prior written permission of Bartell Morrison Inc. unless such copying is permitted by federal copyright laws.

Address inquiries or reference permissions care of Bartell Morrison Inc., 170 Traders Blvd. E,
Mississauga, Ontario, Canada L4Z 1W7

REV.	DATE	DESCRIPTION	APPROVED BY:
-	22/10/18	Initial release	
1	25/11/19	Updated HD1 Accessories	A.N.
2	16/06/21	P/N Updates, Formatting	A.N.

SAFETY PRECAUTIONS



DANGER

EXPLOSION HAZARD

Never operate the machine in an explosive atmosphere, near combustible materials, or where ventilation does not clear exhaust fumes.



WARNING

BURN HAZARD

Never come into contact with the engine or muffler when engine is operating or shortly after it is turned off. Serious burns may occur.



WARNING

ROTATING HAZARD

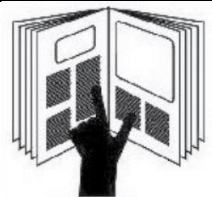
Never place hands or feet inside safety guard rings. Serious injury will result from contact with rotating blades.



CAUTION

MOVING PARTS

Before starting the machine, ensure that all guards and safety devices are in place and functioning properly.



ATTENTION

READ OWNER'S MANUAL

Read and understand owner's manual before using this machine. Failure to follow operating instructions could result in serious injury or death.

TABLE OF CONTENTS

<u>1.</u>	<u>About This Manual</u>	<u>5</u>
<u>2.</u>	<u>Important Safety Instructions</u>	<u>6</u>
○	GENERAL PRECAUTIONS	6
○	ELECTRICAL SAFETY	7
○	THERMAL PROTECTION	7
○	GROUNDING INSTRUCTIONS	7
<u>3.</u>	<u>Unpacking</u>	<u>8</u>
<u>4.</u>	<u>Intended Use</u>	<u>8</u>
<u>5.</u>	<u>Servicing</u>	<u>8</u>
<u>6.</u>	<u>Operating Instructions</u>	<u>9</u>
○	VACUUMING	9
○	FILTER CLEANING	9
○	DUST STORAGE AND RELEASE	10
○	DUST COLLECTING AND BAGGING.	10
<u>7.</u>	<u>Filter Change</u>	<u>10</u>
○	CHANGE OF MAIN FILTER	10
○	CHANGE OF HEPA FILTER	11
<u>8.</u>	<u>Technical Specifications</u>	<u>11</u>
<u>9.</u>	<u>Troubleshooting</u>	<u>12</u>
<u>10.</u>	<u>Parts Breakdown</u>	<u>13</u>
○	HD1 EXPLODED VIEW	14
○	HD1 MOTOR ASSEMBLY	16
○	HD1 WAGON FRAME BREAKDOWN	18
○	HD1 ACCESSORIES	19
○	HD2 EXPLODED VIEW	20
○	HD2 MOTOR ASSEMBLY	22
○	HD2 WAGON FRAME BREAKDOWN	24
○	HD2 & HD3 ACCESSORIES	25
○	HD3 EXPLODED VIEW	26
○	HD3 MOTOR ASSEMBLY	28
○	HD3 WAGON FRAME BREAKDOWN	30
<u>11.</u>	<u>Warranty</u>	<u>31</u>

1. About This Manual

This Manual contains the information and procedures to assist you to operate and maintain the HD Dust Vacuum machine safely and correctly. Read this Manual before you operate or service the equipment. If you need additional information or assistance, please get in touch with our Customer Service Department:

Innovatech Products & Equipment Co.
4701 Allmond Ave
Louisville, KY 40209
(425) 402-1881 or 800-267-6682
Fax (425) 402-8547
Email: service@InnovatechProducts.com

Please take note:

- These instructions are for the single phase, 2-stage HD1/2/3 Dust Extractors only.
- The machines are designed to clean construction area and can be connected to powered hand tools, small/medium size grinders, etc.
- Please pay attention to all safety regulations.
- Read the complete operating manual prior to using the machines.
- All repairs must be performed by a qualified service person. Use only the replacement parts supplied or specified by Innovatech.
- Innovatech shall, under no circumstances, be deemed liable for any accidents or damage caused if the machine is used for other applications or has been used in a way other than those shown in the operating manual.

2. Important Safety Instructions

General Precautions

- The employer must inform and train the user according to the provisions of applicable laws. Use of the machine by untrained and unauthorized persons is strictly forbidden.
- Read the complete instruction manual before operating your dust extractor. Pay particular attention to the safety regulations. Failure to observe the safety regulations could cause serious accidents and injuries.
- This machine is not intended for use by persons (including children) with reduced physical, sensory or mental capabilities, or lack of experience and knowledge.
- Make sure the assembly area is firm, so the machine does not tip over. Risk of personal and material injury.
- Pay extra attentions when cleaning on slopes, ramps, or stairs.
- Make sure the parked machine remains stable by operating the wheel brake.
- Risk of pinching when handling the toggle fasteners.
- Keep children and unauthorized persons away from machine when in use. Close attention is necessary when operated closed to children.
- Keep hair, loose clothing, fingers and all parts of body away from openings and moving parts (except during a filter cleaning procedure when the machine is unplugged).
- Make sure all the guards and protection devices are in place and that all the safety devices are in place and working properly.
- Do not open the vacuum container with the machine running.
- Do not wear loose or hanging clothing such as ties, scarves or torn garments that could become trapped and be sucked up by the cleaner.
- Do not use without dust bag and/or filters in place. Replace collection system and/or filters as described in manual.
- Do not modify machine from its original design.
- All repairs must be performed by a qualified service person. Use only manufacturer supplied or specified replacement parts.
- Innovatech shall, under no circumstances, be deemed liable for any accidents or damage caused if the machine is used for other applications or has been used in a way other than those shown in the operating manual.

Electrical Safety

- Improper connection of the equipment-grounding conductor can result in a risk of electrical shock. Check with a qualified electrician or service person if you are in doubt as to whether the outlet is properly grounded.
- Do not modify the plug provided with the machine. If it will not fit the outlet, have a proper outlet installed by a qualified electrician.
- Before using the machine, make sure that the power & voltage corresponds with the voltage shown on the machines rating plate.
- Do not leave machine when plugged in. Unplug cord from outlet when not in use and before cleaning or servicing machine.
- Cables damaged through crushing or splitting can be dangerous if used and should be replaced immediately. Risk of personal injury.
- Do not use with damaged cord or plug. If the machine is not working as it should, has been dropped, damaged, left outdoors or dropped in water. Make sure it is repaired by a qualified person.
- Do not pull or carry by cord, use cord as handle, close a door on cord, or pull cord around sharp edges or corners. Do not run the machine over cord. Keep cord away from heated surfaces.
- Do not unplug by pulling on cord. To unplug, grasp the plug. Not the cord.
- Do not handle plug or machine with wet hands.
- Regularly inspect cord and plug for damage. If cord is damaged, it must be replaced by a qualified person in order to avoid hazard.
- Turn off all controls before unplugging.
- If using an extension cord make sure the cord rating is suitable for this machine.
- Connect to a properly grounded outlet only. See grounding instructions.

Thermal Protection

The dust extractor is equipped with a safety thermal protector to prevent motor from overheating. Should thermal protector activate, turn off machine, unplug power cord and check for full dust bag, vacuum hose clog or filter blockage. It may take up to 45 minutes for the thermal protector to reset.

Grounding Instructions

The dust extractor must be grounded. If a dust extractor malfunctions or breakdowns, grounding provides a path of least resistance for electric current to reduce the risk of electric shock. The dust extractor is equipped with a cord having an equipment-grounding conductor and grounding plug. The plug must be inserted into an appropriate outlet that is properly installed and grounded in accordance with all local codes and regulations.

3. Unpacking

When unpacking the machine, make sure that the following accessories are included:

- A hose with end fittings
- Metal wand
- Floor tools and its spare parts

If any of the above-mentioned parts are missing, please contact your local distributor or our sales representative.

4. Intended Use

The machine is designed for vacuuming and separating dry, non-combustible dust with an explosion limit value of 0.1mg/m³.

- Do not use the machine outdoors or on wet surface, this machine is designed for indoor and dry use only.
- Do not expose machine to rain or moisture, store indoors only.
- Do not use to pick up any type of liquids.
- Do not use to pick up any flammable or combustible substances, or the substances which could cause explosions (fuels, solvents, etc.), don't use in an area where they may be present.
- Do not use to pick up any substances that is burning or smoking substances, such as cigarettes and matches, or hot ashes.
- Innovatech shall, under no circumstances, be deemed liable for any accidents or damage caused if the machine is used for other applications.

5. Servicing

- When cleaning and servicing the machine, you must switch off the machine and remove the plug from the outlet.
- Don't clean the machine with a high pressure cleaner. If necessary, do not direct at the openings on the machine, especially the opening for cooling air.
- Before moving the machine from the work area, the machine must be cleaned.
- Proper personnel protective equipment must be used while replacing the pre-filter or the HEPA filter. If possible, use a special suitable room.
- All parts which are contaminated after service must be properly disposed of in plastic bags according to all regulations.
- If the machine has to be used for other purposes, it is extremely important that the machine is cleaned, to avoid the spread of hazardous dust.
- Do not puncture the HEPA filter. Risk of dust dispersion.

6. Operating Instructions

Vacuuming

Before starting a vacuuming process,

- make sure the machine is properly connected to a machine or a floor tool via the provided hose and fittings.
- check the power cable and the plugs are in a good condition.
- make sure the power voltage corresponds to that on the rating plate and connect correctly the power plug to a power socket

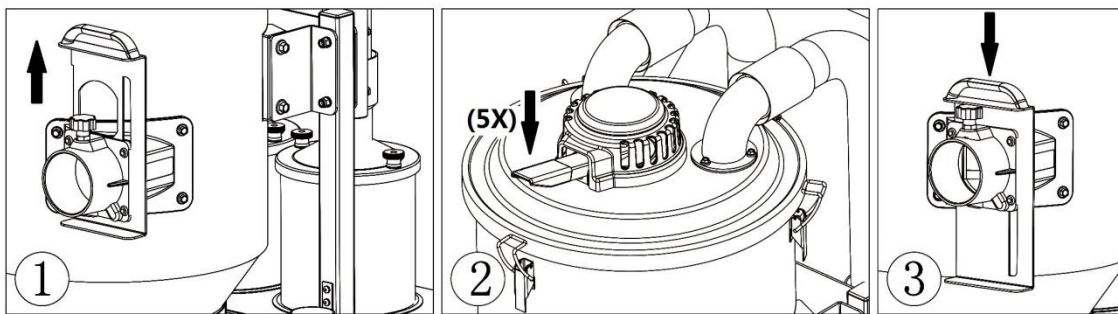
Turn on the **power switch** to start a vacuuming process.

During the vacuuming process, dust-laden air is sucked through the flexible hose and inlet valve at a high speed. The air is then slowed down by the cyclone, and coarse dust particles are separated out partly by centrifugal force and partly by gravity. Air and finer particles pass through the pre-filter at the first stage and the HEPA filter at the final stage where separation is made.

Filter Cleaning

The machine is designed for filter cleaning by reverse air “jet-pulse”.

The filter must be cleaned from time to time. This must be done before changing the bag collection system and should also be done when work is completed or whenever there is a poor suction.



Filter cleaning procedure:

- 1) Cover the inlet by lifting up the inlet valve and let the machine build up vacuum for 4 to 5 seconds,
- 2) Quickly push down the filter cleaning handle and release it. Repeat the procedure five times. It is important to let the machine rebuild the vacuum in between every repetition,
- 3) Open the inlet again by pushing down the inlet valve.

If suction remains poor, the conical pre-filter needs to be replaced. If suction still remains poor afterwards, the HEPA filters need to be replaced. See instructions in the next chapter.

Dust storage and release

The separated dust accumulates in the conic bottom during the vacuuming process, and it drops through the bottom flap into the plastic bag when the machine is switched off. In some extreme cases the adhesive ability of the dust must be broken manually. This can be done by hitting the dust through the bag or tapping the tank using i.e. a rubber hammer.

Dust collecting and bagging.

The machine is equipped with a continuous fold bag system for an effective dust collecting and bagging. The supplied fold bag is a 22 m long plastic tube that will be divided into individual bags using the zip ties attached with the machine.

To assemble a new fold bag:

- 1) Release the belt holding the last bag and take off the bag holder.
- 2) Put in a new fold bag & pull out the inner end upwards.
- 3) Assemble the holder onto the machine and strap the opening facing upwards with the belt.
- 4) Pull down the outside end and close it using a zip tie.

Before changing a fold bag or a regular bag, make sure the filter cleaning cycle has been completed.

7. Filter Change

Unhealthy dust can be spread during filter change. Accordingly, the user should wear protective glasses, protective gloves, and a breathing mask conforming to protection class FFP3. Remember to switch off and unplug the machine before servicing.



Change of Main Filter

- 1) Loosen the 3 hooks and remove the top cover. Take out a new filter from its bag. Lift out the used filter from its chamber and place it gently into the filter bag. This bag must be closed and disposed properly.
- 2) Insert a new filter.
- 3) Put back the top head and close the 3 hooks properly.

IMPORTANT! If you are removing the main filter in order to clean it. Hitting the filter with force or use of compressed air will destroy the filter. It can handle water, but high pressure water cleaning will destroy it.

Change of HEPA Filter

- 1) Loosen the 2 nuts on each filter cover. Take out a new filter from its bag. Lift out the used HEPA filter from its chamber and place it gently into the filter bag. This bag must be closed and disposed properly.
- 2) Insert a new filter to the filter chamber.
- 3) Put back the filter cover and close the 2 nuts properly.

IMPORTANT! HEPA filters can't be cleaned, trying this might destroy it. When installing the replacement filter, make sure not touch the inside of the filter. Any kind of force/damage on the inside of filter media will destroy the new filter.

8. Technical Specifications

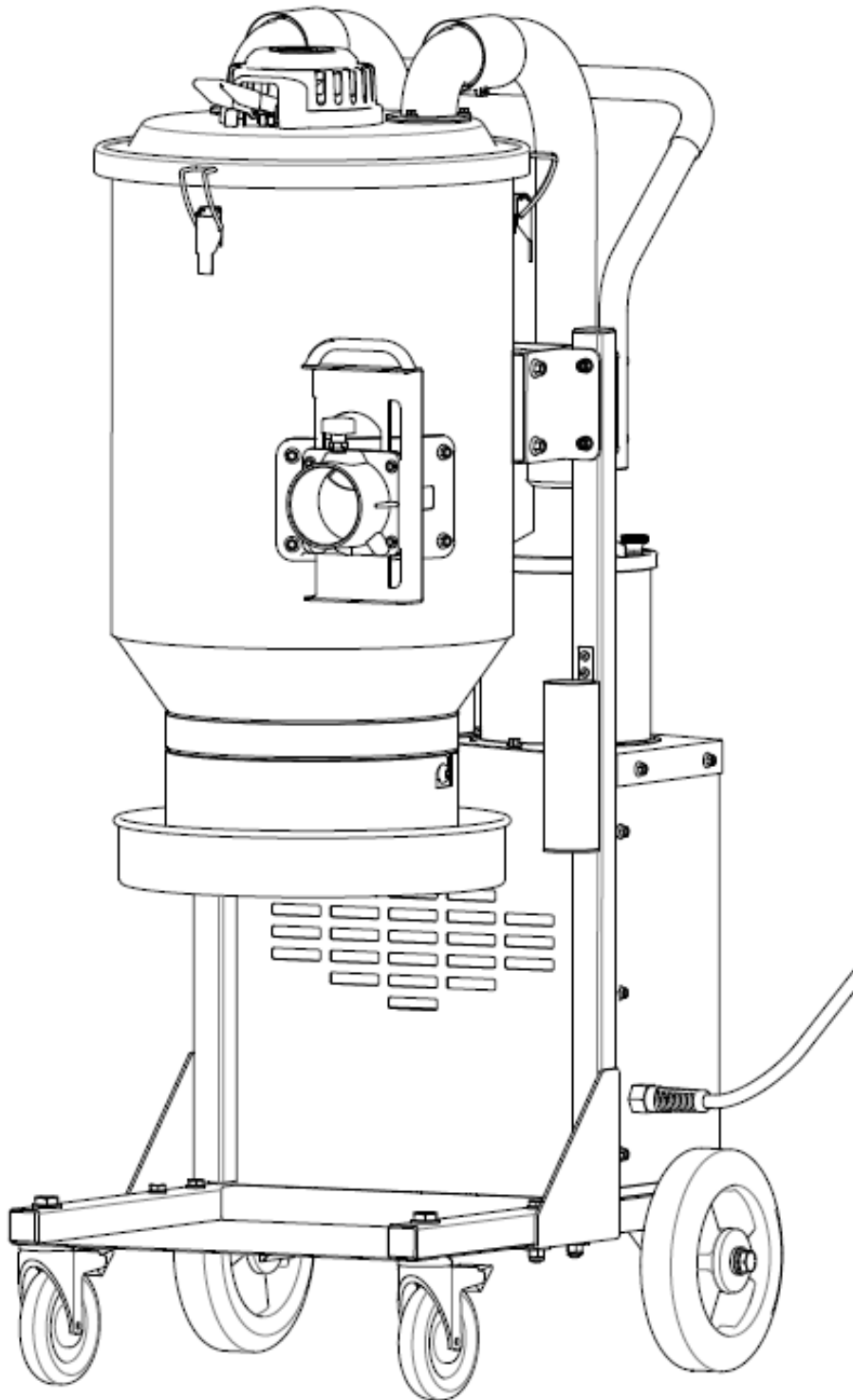
data	unit	HD1	HD2	HD3
Voltage (Single Phase)	V	120	120	230
Max. Power	W	1200	2400	3600
	HP	1.6	3.2	4.8
Current	A	8	16	12
Max. Air Flow	m ³ /h	200	400	600
	CFM	118	236	354
Max. Vacuum	mbar	240	240	220
	inch H ₂ O	100	100	90
Main Hose	mm	D38x5m	D51x7.5m	D51x7.5m
	inch	D1.5"x16.5'	D2.0"x24'	D2.0"x24'
Inlet	mm	63	63	63
	inch	2.5"	2.5"	2.5"
Pre-Filter (EN779-F8)	%	>99.5% @1.0 um	>99.5% @1.0 um	>99.5% @1.0 um
Pre-Filter Surface Area	m ²	1.5	3.2	4.5
	ft ²	16	34	49
HEPA Filter (EN1822-H13)	%	>99.99% @0.3 um	>99.99% @0.3 um	>99.99% @0.3 um
HEPA Filter Surface Area	m ²	1.2x1	1.2x2	1.2x3
	ft ²	13x1	13x2	13x3
Noise Level	dB(A)	70	70	70
Dimensions with Carton	mm	650x420x1070	650x575x1260	780x590x1460
	inch	25.6x16.5x42.0	25.6x22.6x49.6	30.7x23.2x57.5
Weight	kg	35	54	67.5
	lbs	77	119	149

9. Troubleshooting

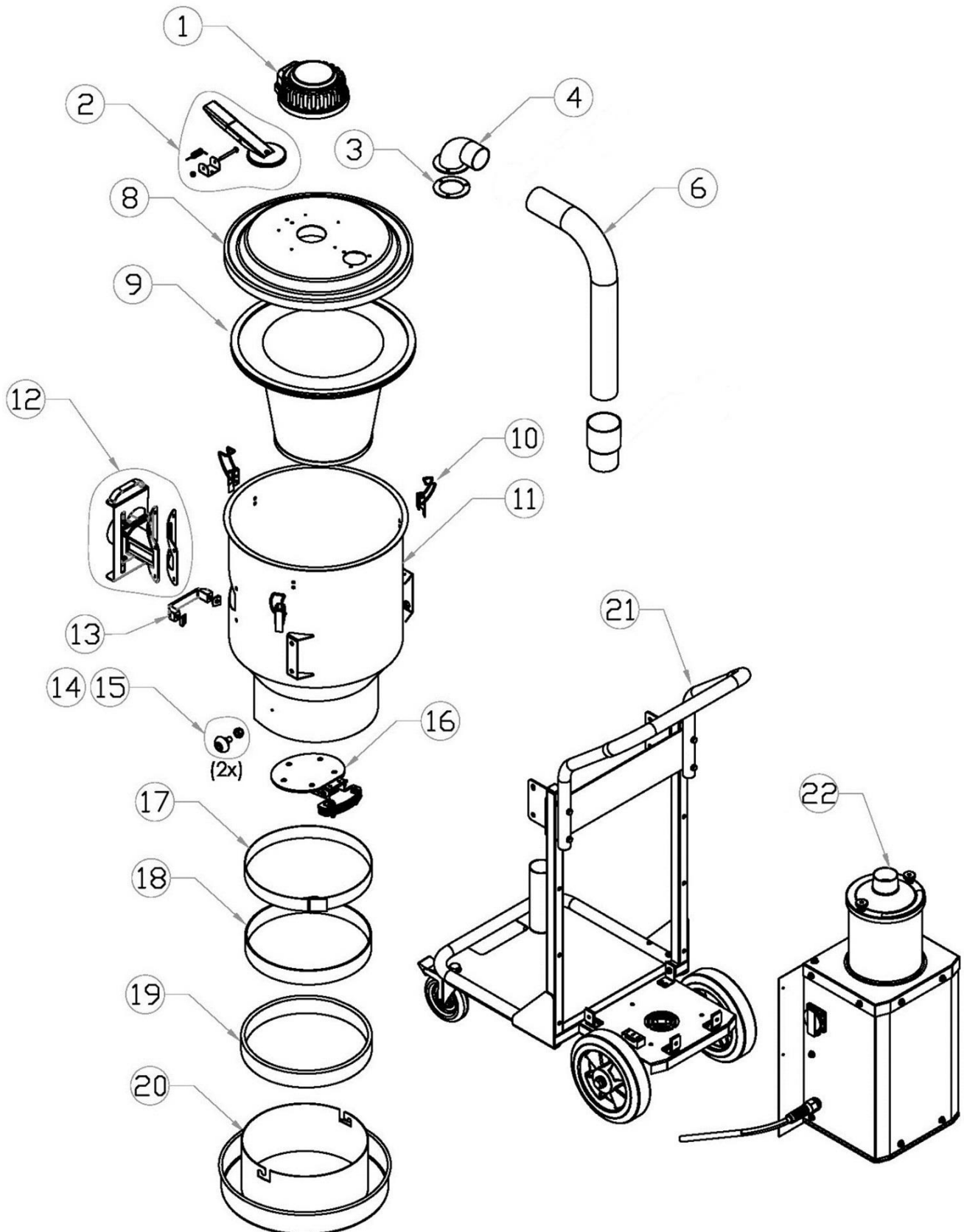
The machine is designed and manufactured for a specific severe environments and tasks. Its filter, seals, attachments, and fittings are customized or selected specifically for the applications. Please note that the machine must be protected from knocks and blows. The operator and service personnel must treat the machine with care for it to work correctly for an expected life span.

Problem	Cause	Solution
Motor fails to start	No power	Check power supply. Make sure power cable and plugs are in a good condition and properly connected, Check the power switch is in a good condition and properly connected.
Motor stops shortly after start	Wrong fuse	Connect to a correct fuse
	Shortcut in cable/machine	Order service
Motor runs but no suction	Hose not connected	Connect hose
	Hose clogged or blocked	Clean hose
	No dust collection bag	Fit dust collection system
Motor runs but with poor suction	Hole in hose	Replace hose
	Filter clogged	Clean filter or replace filter
	Loose top cover	Make an adjustment of hooks or top cover
	Defective seals or gaskets	Replace defective seals or gaskets
Dust leaks out	Hole in hose	Replace the defective hose
	Damaged filter	Replace the damaged filter
	Poor assembled filters	Make an adjustment of the poorly assembled filters
Machine works noisy or works abnormal	various causes	Consult the technical support agent or order a service

10. Parts Breakdown



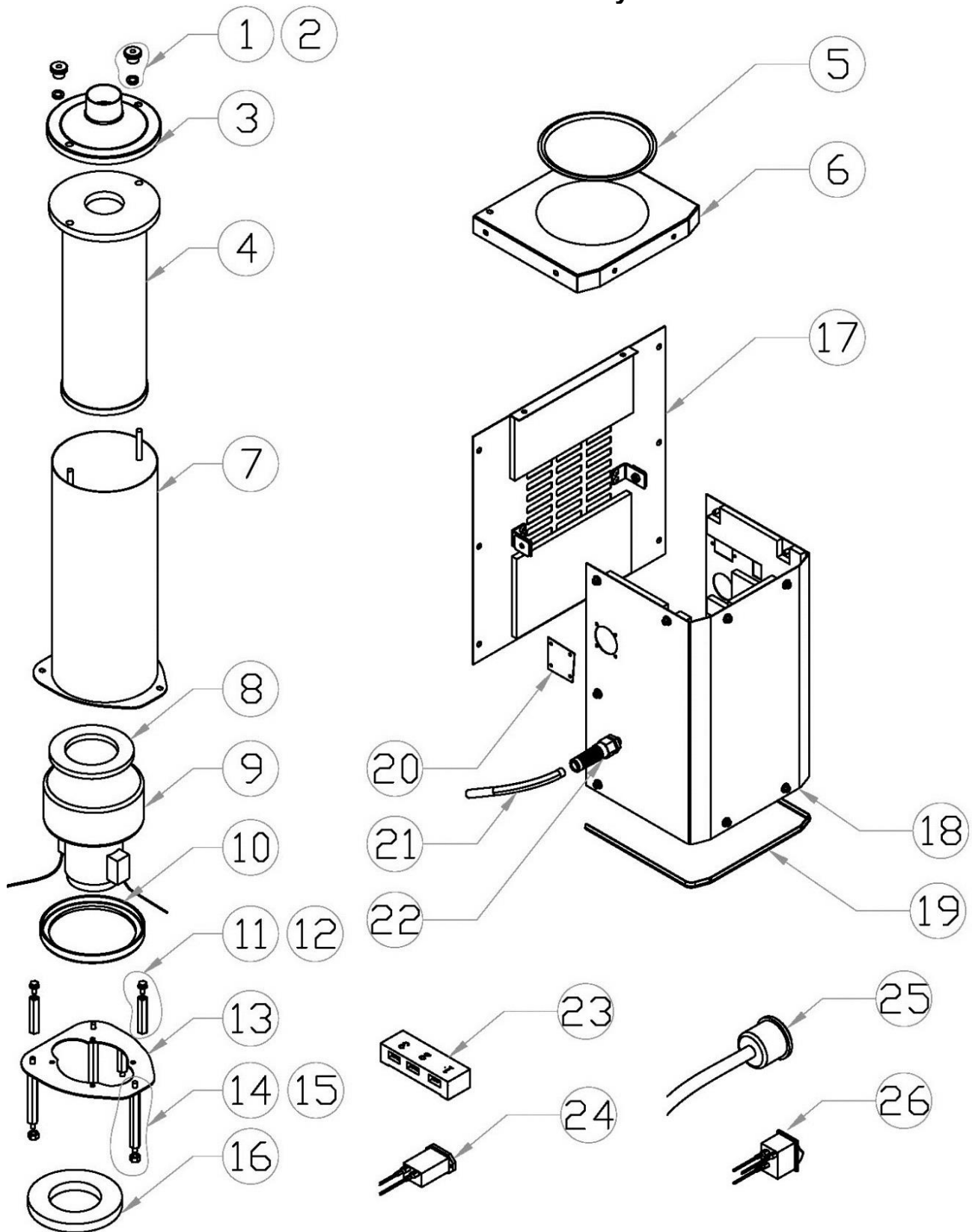
HD1 Exploded View



HD1 Exploded View

Item No.	Part Number	Description	Qty.
1	833-0060	PURGE HANDLE COVER KIT	1
2	833-0030	PURGE HANDLE KIT	1
3	833-0080	BEND CONNECTOR SEAL	1
4	833-0011	D50 BEND CONNECTOR	1
6	833-0086	HOSE D50X375 WITH FITTINGS	3
8	833-0013	HD1 TOP COVER	1
9	833-0001	HD1 MAIN FILTER	1
10	833-0036	HOOK 95 KIT	1
11	833-0014	HD1 PRE-FILTER CHAMBER	1
12	833-0045	D70 INLET ASSEMBLY	1
13	833-0057	HAND HOLDER KIT	1
14	833-0107	KEY M5	2
15	30843	LOCKNUT M5	2
16	833-0032	FLAP ASSEMBLY	1
17	833-0110	PACKING BELT	1
18	833-0085	FOAM RING	1
19	833-0005	DROP-DOWN BAG	1
20	833-0012	DROP-DOWN BAG HOLDER	1
21	833-0031	HD1 WAGON FRAME ASSEMBLY	1
22	833-0033	HD1 120V MOTOR ASSEMBLY	1

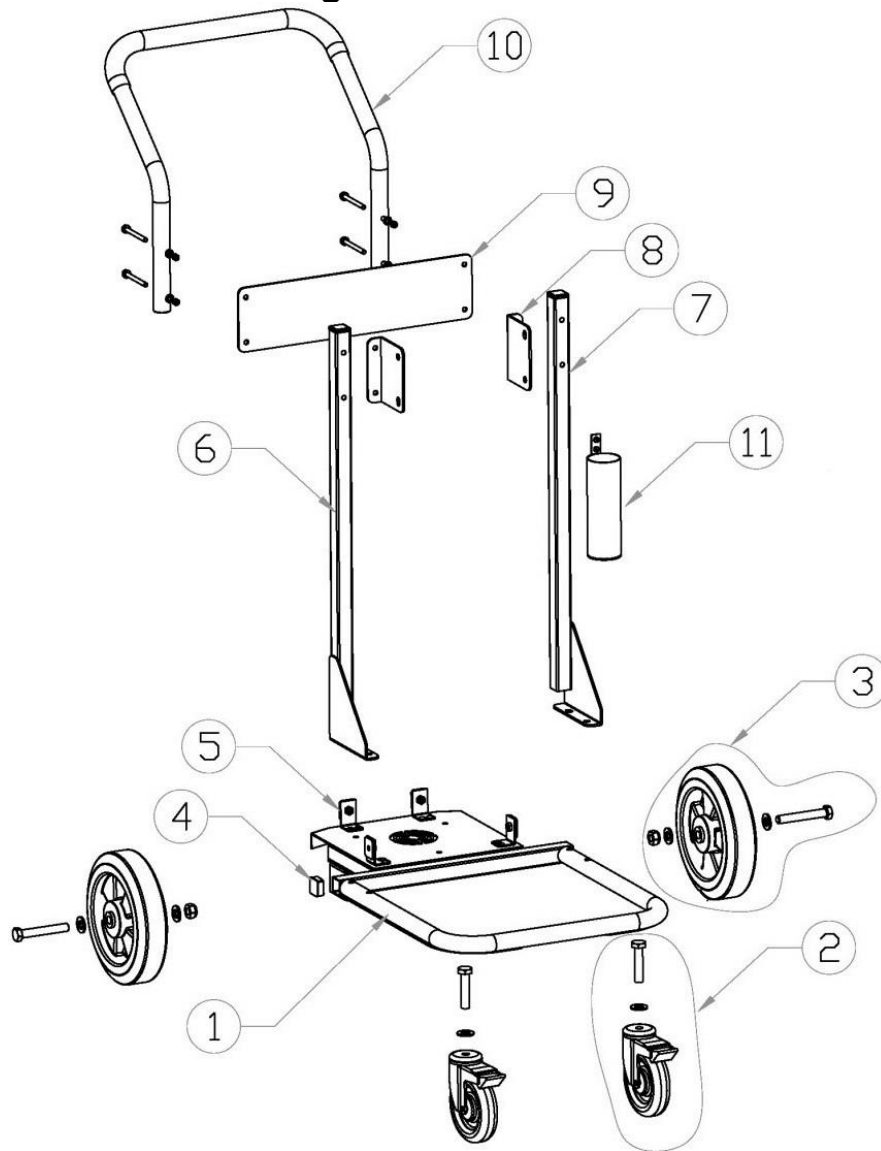
HD1 Motor Assembly



HD1 Motor Assembly

Item No.	Part Number	Description	Qty.
1	833-0097	NUT M8	2
2	833-0084	SEAL WASHER M8	2
3	833-0018	FILTER COVER	1
4	833-0004	HEPA FILTER	1
5	833-0090	TOP COVER RUBBER SEAL	1
6	833-0043	HD1 TOP COVER KIT	1
7	833-0019	HEPA CHAMBER	1
8	833-0108	MOTOR SEAL	1
9	833-0006	ELECTRIC MOTOR, 1.2 KW 120V	1
10	833-0078	RUBBER RING	1
11	14446	HHCS M6-1.0 X 12MM	3
12	833-0100	FEMALE SPACER L76.5	3
13	833-0020	MOTOR SUPPORT	1
14	833-0106	MALE SPACER L101.5	3
15	10069	NUT M6	3
16	833-0109	FOAM DISC	1
17	833-0041	HD1 COVER PLATE KIT	1
18	833-0042	HD1 CHASSIS KIT	1
19	833-0091	HD1 CHASSIS RUBBER SEAL	1
20	833-0075	HD1 OUTLET KIT	1
21	833-0066	HD1 120V ELECTRICAL CORD SET	1
22	833-0101	CABLE FIX (PG13.5)	1
23	833-0076	TERMINAL BLOCK TB1503 KIT	1
24	833-0074	HOUR COUNTER KIT	1
25	833-0044	MANOMETER KIT	1
26	833-0073	POWER SWITCH KIT	1

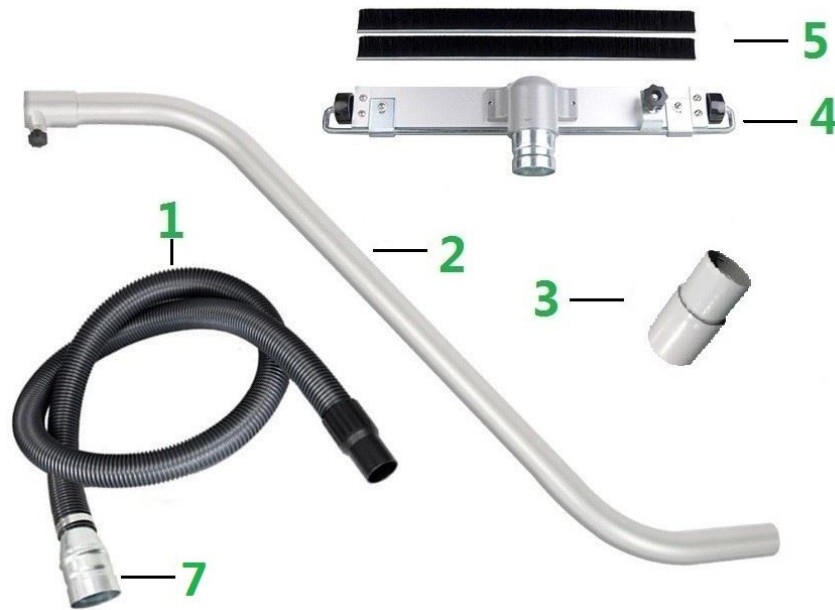
HD1 Wagon Frame Breakdown



HD1 Wagon Frame Breakdown

Item No.	Part Number	Description	Qty.
1	833-0015	HD1 WAGON FRAME BASE	1
2	833-0068	FRONT WHEEL KIT	2
3	833-0059	REAR WHEEL KIT	2
4	833-0082	PLASTIC INSERT 25X25	8
5	833-0058	L BRACKET KIT	4
6	833-0037	HD1 MAINSTAY RIGHT KIT	1
7	833-0039	HD1 MAINSTAY LEFT KIT	1
8	833-0061	HD1 TANK HOLDER KIT	2
9	833-0025	HD1 BACK PLATE	1
10	833-0040	HD1 HANDLE KIT	1
11	833-0038	CABLE TIE HOLDER	1

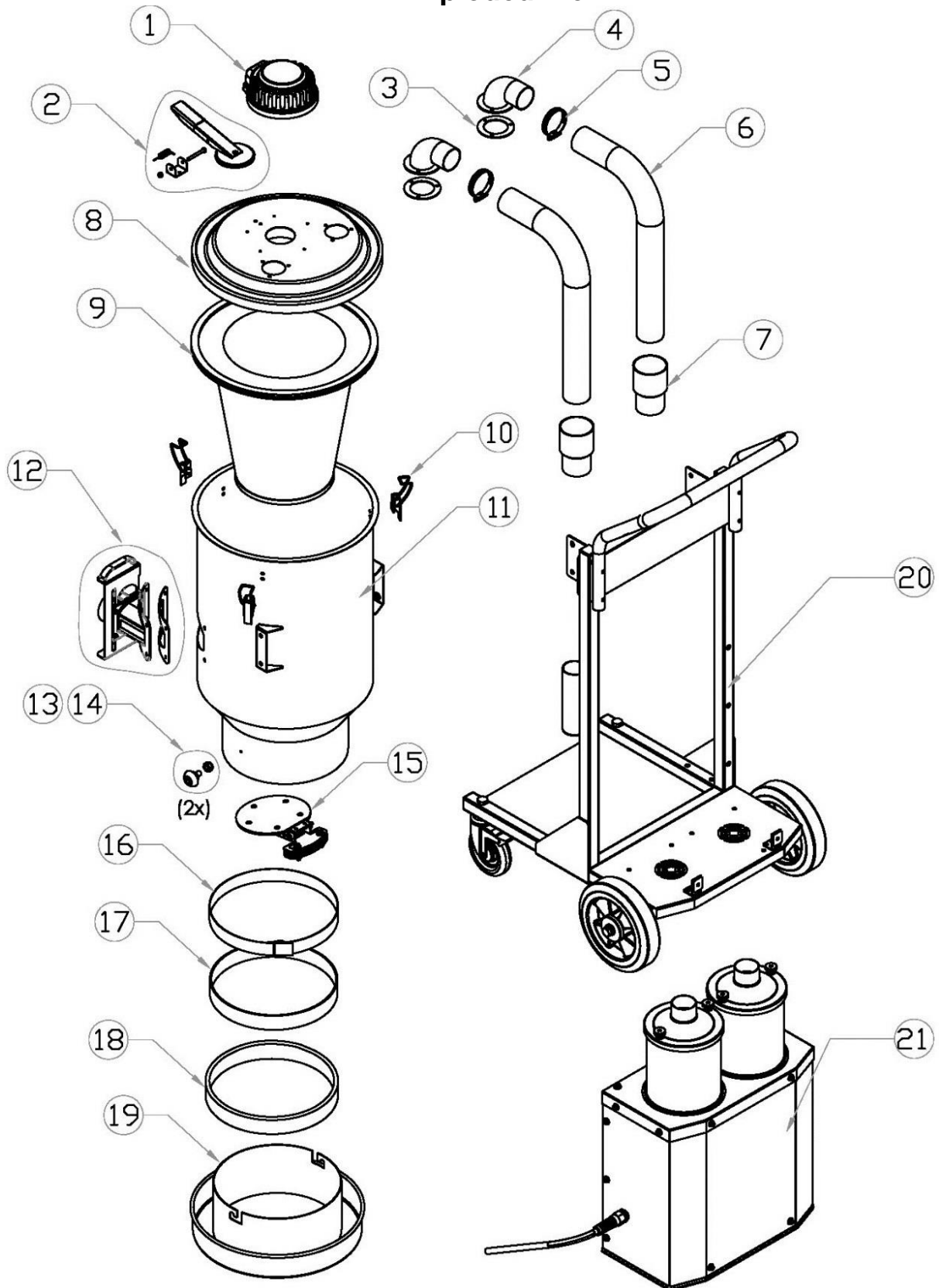
HD1 Accessories



HD1 Accessories

Item No.	Part Number	Description	Qty.
1	833-0069	HOSE KIT D40X5.0M (INCL END ADAPTORS)	1
2	833-0028	D50 S WAND	1
3	833-0112	1.5" TO 2" HOSE ADAPTOR (GREY)	1
4	833-0029	D50 FLOOR BRUSH	1
5	833-0098	HD1/2/3 SPARE BRUSH	1
6	833-0116	RUBBER BLADE/SQUEEGEE 430MM	2
	833-0117	RUBBER BLADE/SQUEEGEE 550MM	2
7	833-0118	HD1 VAC TO HOSE CONNECTOR	1

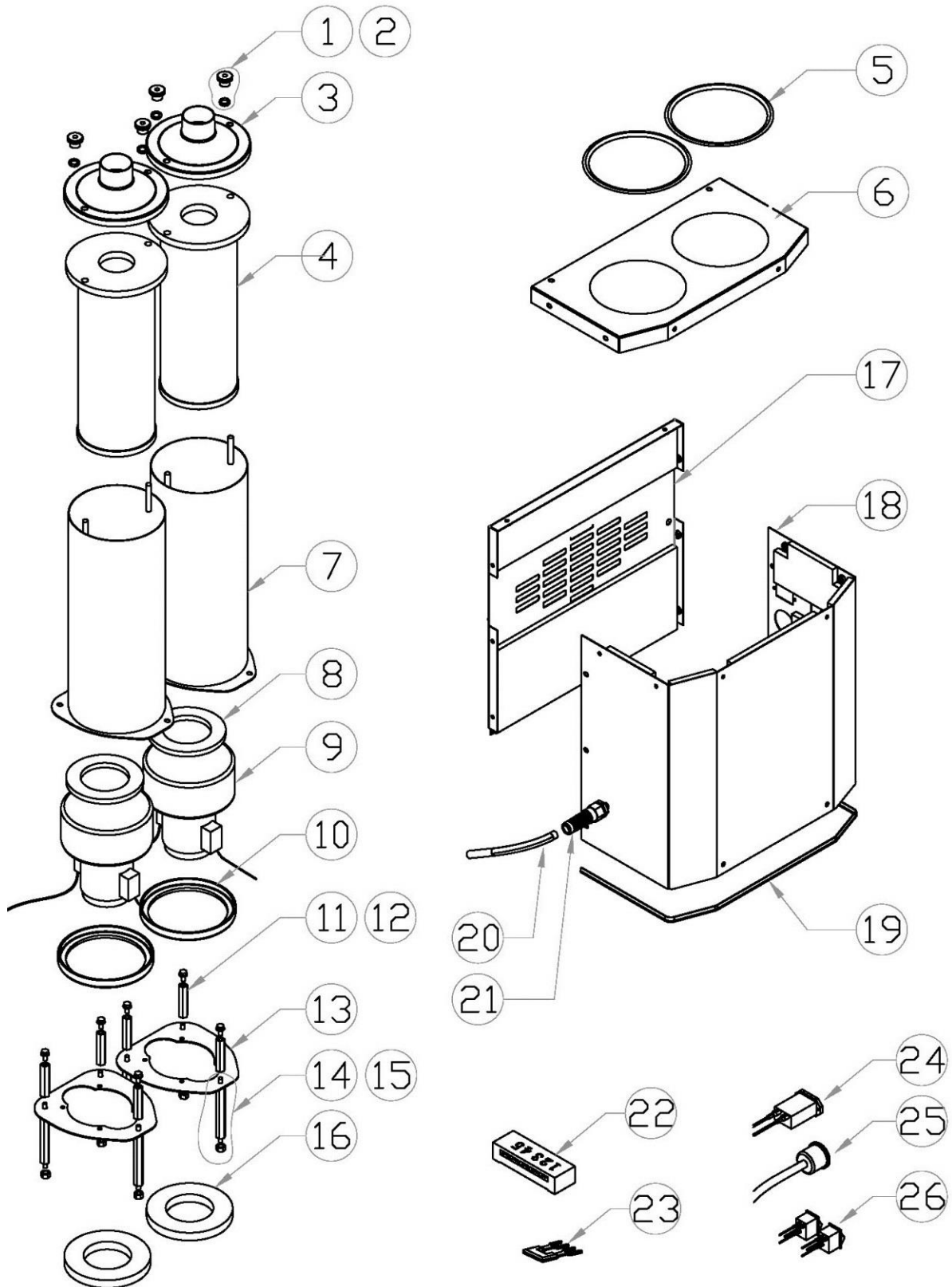
HD2 Exploded View



HD2 Exploded View

Item No.	Part Number	Description	Qty.
1	833-0060	PURGE HANDLE COVER KIT	1
2	833-0030	PURGE HANDLE KIT	1
3	833-0080	BEND CONNECTOR SEAL	2
4	833-0011	D50 BEND CONNECTOR	2
5	-	N/A	-
6	833-0087	HOSE D50X560 WITH FITTINGS	2
7	-	N/A	-
8	833-0021	HD2 TOP COVER	1
9	833-0002	HD2 MAIN FILTER	1
10	833-0036	HOOK 95 KIT	3
11	833-0022	HD2 PRE-FILTER CHAMBER	1
12	833-0045	D70 INLET ASSEMBLY	1
13	833-0107	KEY M5	2
14	30843	LOCKNUT M5	2
15	833-0032	FLAP ASSEMBLY	1
16	833-0110	PACKING BELT	1
17	833-0085	ANTI-SKIT RING	1
18	833-0005	DROP-DOWN BAG	1
19	833-0012	DROP-DOWN BAG HOLDER	1
20	833-0034	HD2 WAGON FRAME ASSEMBLY	1
21	833-0063	HD2 120V MOTOR ASSEMBLY	1

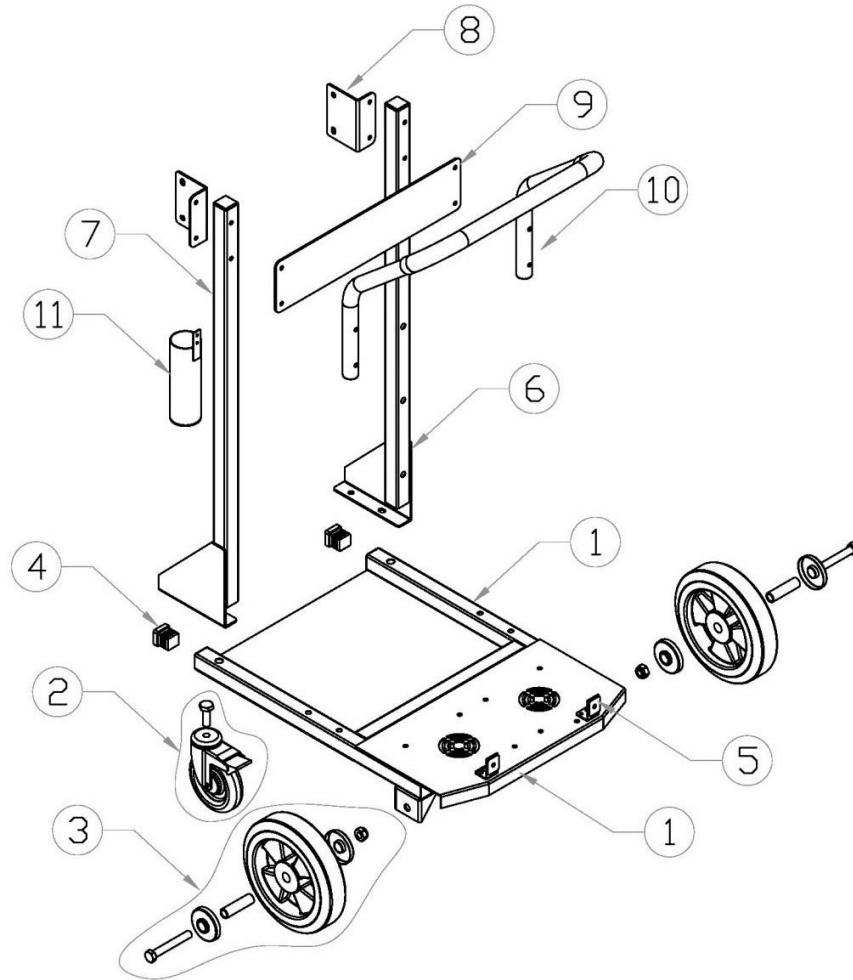
HD2 Motor Assembly



HD2 Motor Assembly

Item No.	Part Number	Description	Qty.
1	833-0097	NUT M8	4
2	833-0084	SEAL WASHER M8	4
3	833-0018	FILTER COVER	2
4	833-0004	HEPA FILTER	2
5	833-0090	TOP COVER RUBBER SEAL	2
6	833-0051	HD2 TOP COVER KIT	1
7	833-0019	HEPA CHAMBER	2
8	833-0108	MOTOR SEAL	2
9	833-0006	ELECTRIC MOTOR, 1.2 KW 120V	2
10	833-0078	RUBBER RING	2
11	14446	HHCS M6-1.0 X 12MM	6
12	833-0100	FEMALE SPACER L76.5	6
13	833-0020	MOTOR SUPPORT	2
14	833-0106	MALE SPACER L101.5	6
15	10069	NUT M6	6
16	833-0109	FOAM DISC	2
17	833-0049	HD2/3 COVER PLATE KIT	1
18	833-0050	HD2 CHASSIS KIT	1
19	833-0092	HD2 CHASSIS RUBBER SEAL	1
20	833-0065	HD2 120V ELECTRICAL CORD SET	1
21	833-0101	CABLE FIX (PG13.5)	1
22	833-0077	TERMINAL BLOCK TB2505 KIT	1
23	833-0111	U BYPASS TB2502	1
24	833-0074	HOUR COUNTER KIT	1
25	833-0044	MANOMETER KIT	1
26	833-0073	POWER SWITCH KIT	2

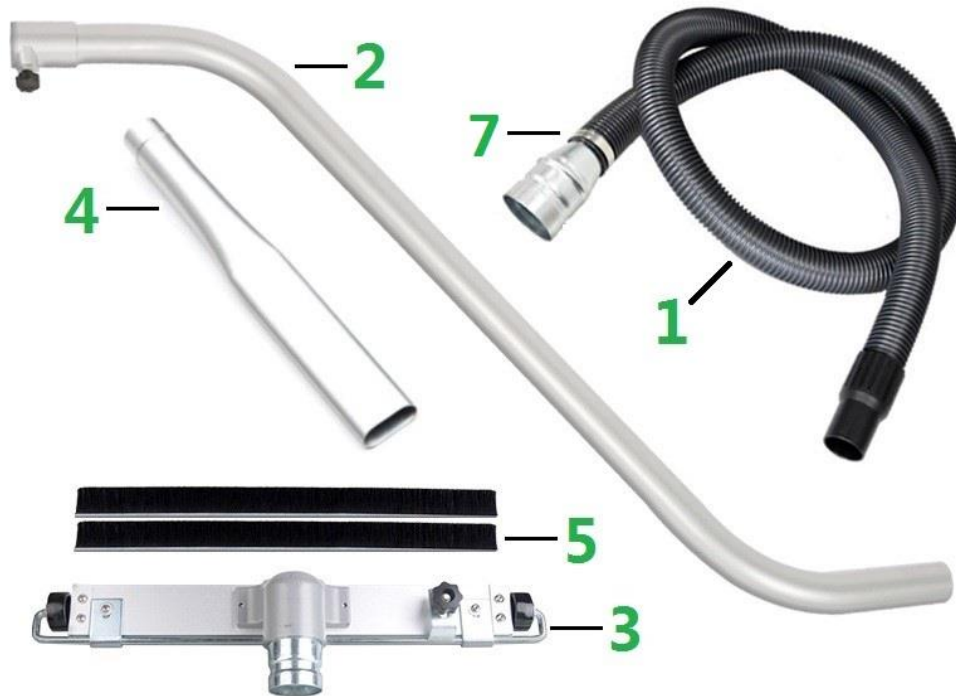
HD2 Wagon Frame Breakdown



HD2 Wagon Frame Breakdown

Item No.	Part Number	Description	Qty.
1	833-0016	HD2 WAGON FRAME BASE	1
2	833-0068	FRONT WHEEL KIT	2
3	833-0059	REAL WHEEL KIT	2
4	833-0083	PLASTIC INSERT 30X30	8
5	833-0058	L BRACKET KIT	2
6	833-0047	HD2 MAINSTAY RIGHT KIT	1
7	833-0046	HD2 MAINSTAY LEFT KIT	1
8	833-0062	HD2 TANK HOLDER KIT	2
9	833-0026	HD2/3 BACK PLATE	1
10	833-0048	HD2 HANDLE KIT	1
11	833-0038	CABLE TIE HOLDER	1

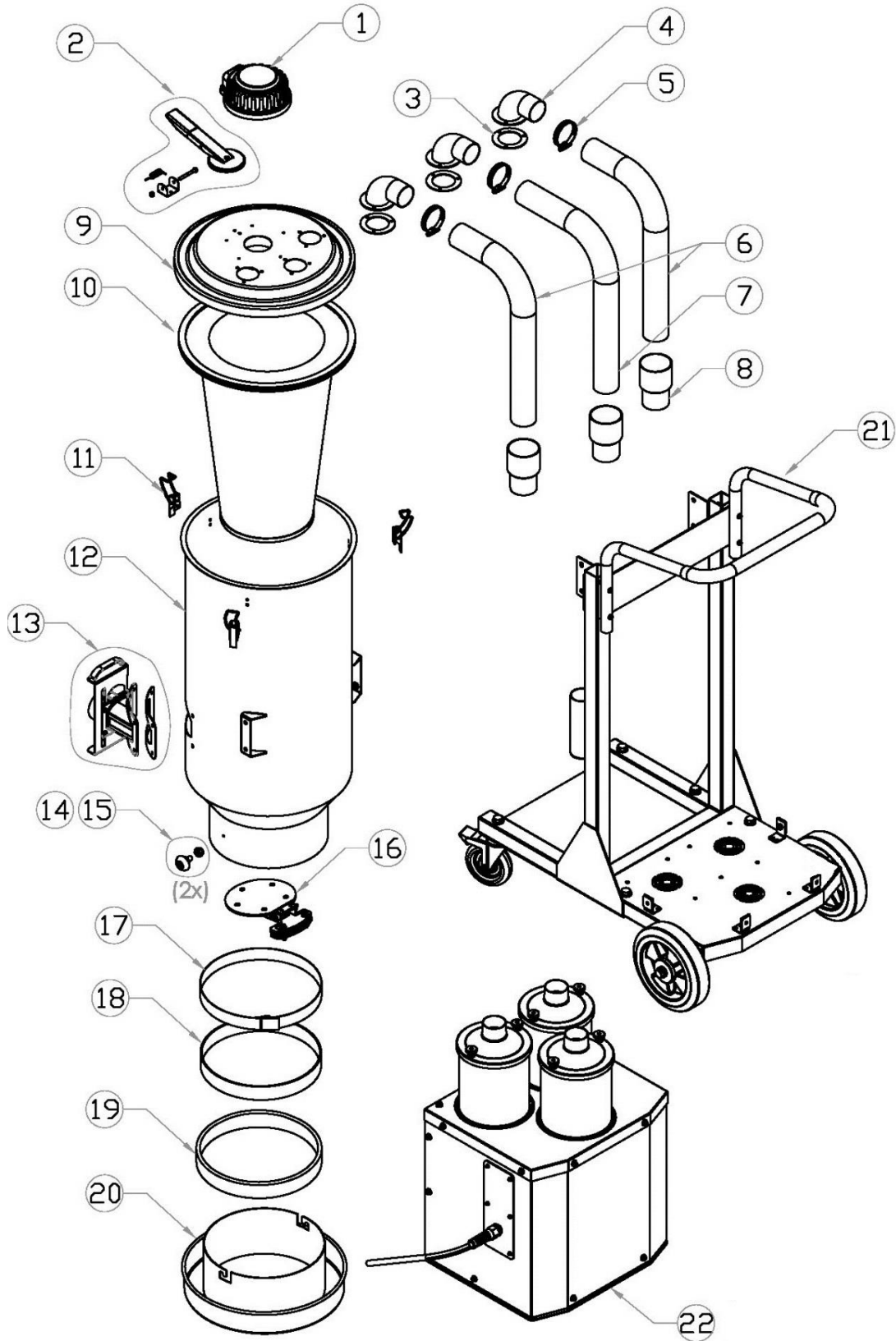
HD2 & HD3 Accessories



HD2 & HD3 Accessories

Item No.	Part Number	Description	Qty.
1	833-0070	HOSE KIT D50X7.5M (INCL END ADAPTORS)	1
2	833-0028	D50 S WAND	1
3	833-0029	D50 FLOOR BRUSH	1
4	833-0010	D50 CREVICE TOOL	1
5	833-0098	HD2/3 SPARE BRUSH	1
6	833-0116	RUBBER BLADE/SQUEEGEE 430MM	2
	833-0117	RUBBER BLADE/SQUEEGEE 550MM	2
7	833-0119	HD2/3 VAC TO HOSE CONNECTOR	1

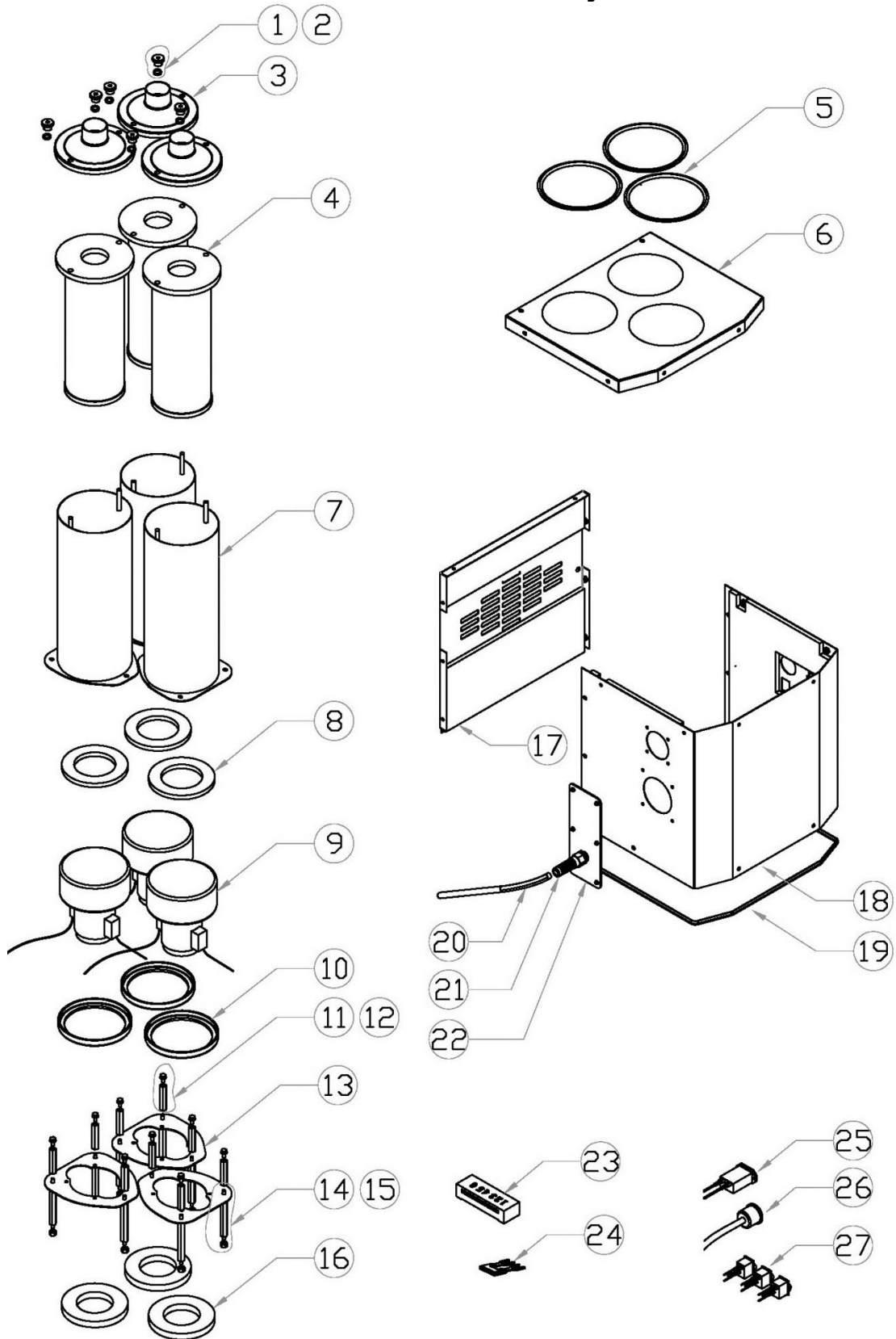
HD3 Exploded View



HD3 Exploded View

Item No.	Part Number	Description	Qty.
1	833-0060	PURGE HANDLE COVER KIT	1
2	833-0030	PURGE HANDLE KIT	1
3	833-0080	BEND CONNECTOR SEAL	3
4	833-0011	D50 BEND CONNECTOR	3
5	-	N/A	-
6	833-0088	HOSE D50X750 WITH FITTINGS	2
7	833-0089	HOSE D50X800 WITH FITTINGS	1
8	-	N/A	-
9	833-0023	HD3 TOP COVER	1
10	833-0003	HD3 MAIN FILTER	1
11	833-0036	HOOK 95 KIT	3
12	833-0024	HD3 PRE-FILTER CHAMBER	1
13	833-0045	D70 INLET ASSEMBLY	1
14	833-0107	KEY M5	2
15	30843	LOCKNUT M5	2
16	833-0032	FLAP ASSEMBLY	1
17	833-0110	PACKING BELT	1
18	833-0085	ANTI-SKIT RING	1
19	833-0005	DROP-DOWN BAG	1
20	833-0012	DROP-DOWN BAG HOLDER	1
21	833-0035	HD3 WAGON FRAME ASSEMBLY	1
22	833-0064	HD3 230V MOTOR ASSEMBLY	1

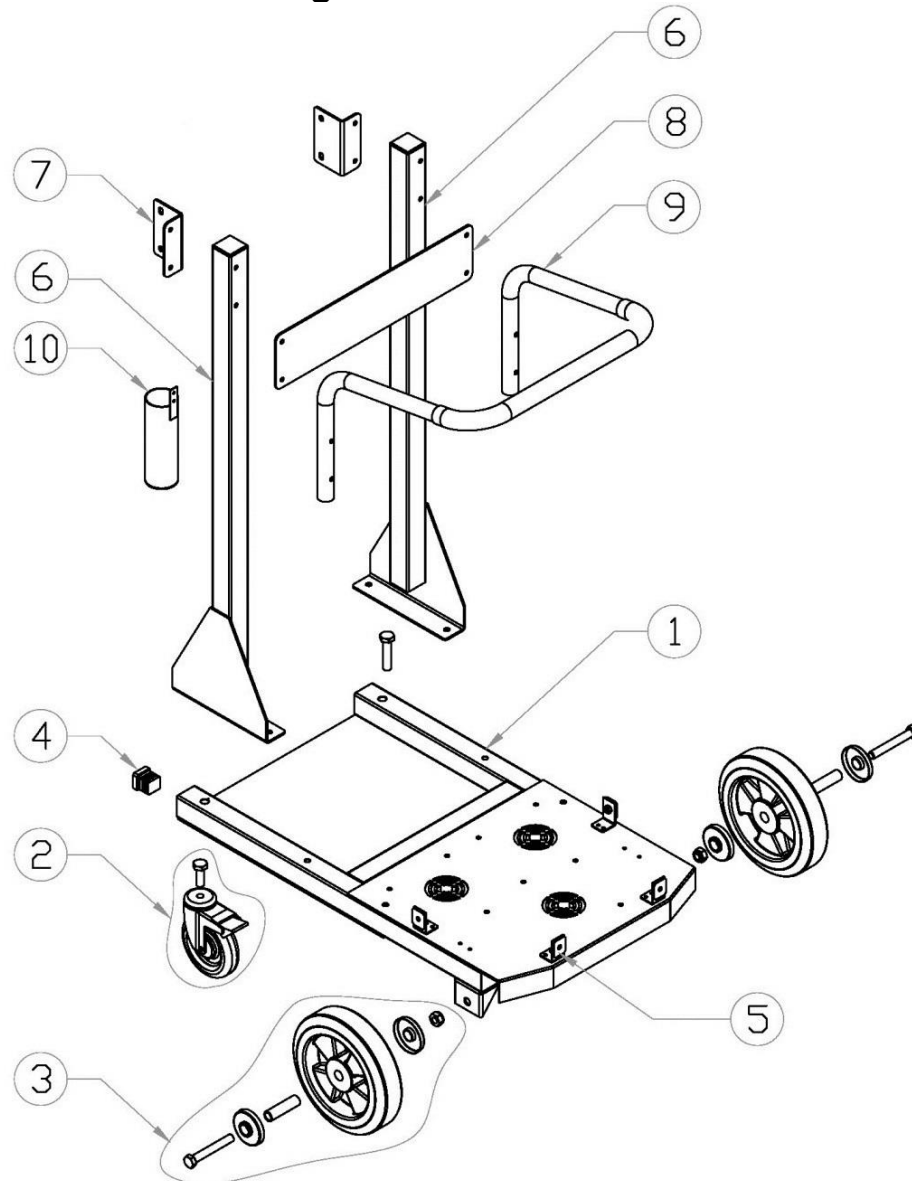
HD3 Motor Assembly



HD3 Motor Assembly

Item No.	Part Number	Description	Qty.
1	833-0097	NUT M8	6
2	833-0084	SEAL WASHER M8	6
3	833-0018	FILTER COVER	3
4	833-0004	HEPA FILTER	3
5	833-0090	TOP COVER RUBBER SEAL	3
6	833-0056	HD3 TOP COVER KIT	1
7	833-0019	HEPA CHAMBER	3
8	833-0108	MOTOR SEAL	3
9	833-0007	ELECTRIC MOTOR, 1.2 KW 230V	3
10	833-0078	RUBBER RING	3
11	14446	HHCS M6-1.0 x 12MM	9
12	833-0100	FEMALE SPACER L76.5	9
13	833-0020	MOTOR SUPPORT	3
14	833-0106	MALE SPACER L101.5	9
15	10069	NUT M6	9
16	833-0109	FOAM DISC	3
17	833-0049	HD2/3 COVER PLATE KIT	1
18	833-0055	HD3 CHASSIS KIT	1
19	833-0093	HD3 CHASSIS RUBBER SEAL	1
20	833-0067	HD3 230V ELECTRICAL CORD SET	1
21	833-0101	CABLE FIX (PG13.5)	1
22	833-0049	HD3 CABLE FIX KIT	1
23	833-0072	TERMINAL BLOCK TB2506 KIT	1
24	833-0111	U BYPASS TB2502	1
25	833-0074	HOUR COUNTER KIT	1
26	833-0044	MANOMETER KIT	1
27	833-0073	POWER SWITCH KIT	3

HD3 Wagon Frame Breakdown



HD3 Wagon Frame Breakdown

Item No.	Part Number	Description	Qty.
1	833-0016	HD3 WAGON FRAME BASE	1
2	833-0068	FRONT WHEEL KIT	2
3	833-0059	REAL WHEEL KIT	2
4	833-0083	PLASTIC INSERT 30X30	4
5	833-0058	L BRACKET KIT	4
6	833-0053	HD3 MAINSTAY KIT	2
7	833-0062	HD3 TANK HOLDER KIT	2
8	833-0026	HD2/3 BACK PLATE	1
9	833-0054	HD3 HANDLE KIT	1
10	833-0038	CABLE TIE HOLDER	1

11. Warranty

Innovatech warrants to the original buyer, for a period of one (1) year from the date of delivery, that the Equipment is free from defects in materials and workmanship and that the Equipment conforms to the operating specifications supplied with the Equipment. The foregoing warranty is subject to proper operation and maintenance of the Equipment in accordance with the operating instruction and manual supplied to Buyer with the Equipment.

Warranty claims shall be made by Buyer in writing. Innovatech's sole obligation under the foregoing warranty, where it appears to Innovatech's satisfaction that the defect was present at the time of delivery, is at Innovatech's sole option, to repair, replace or correct any such defect.

EXCEPT AS STATED ABOVE THERE ARE NO WARRANTIES, EXPRESS OR IMPLIED. INNOVATECH EXPRESSLY DISCLAIMS ANY WARRANTY, EXPRESS OR IMPLIED, THAT EQUIPMENT SOLD HEREUNDER IS OF MERCHANTABLE QUALITY OR THAT IT CAN BE USED FOR OR IS FIT FOR ANY PARTICULAR PURPOSE. ANY DESCRIPTION OF THE EQUIPMENT IN THIS AGREEMENT OR IN MANUALS, BROCHURES OR LITERATURE AND ANY USE OF ANY SAMPLE, MODEL OR PROTOTYPE OF THE EQUIPMENT IS FOR THE SOLE PURPOSE OF IDENTIFYING OR ILLUSTRATING THE EQUIPMENT, IS NOT PART OF THE BASIS OF THE AGREEMENT BETWEEN INNOVATECH AND BUYER, AND DOES NOT CONSTITUTE A WARRANTY THAT THE EQUIPMENT, AS SUPPLIED, WILL CONFORM TO ANY DESCRIPTION OR TO ANY SAMPLE, MODEL OR PROTOTYPE. INNOVATECH DISCLAIMS ANY WARRANTY RESPECTING OPERATING CAPACITY OR CAPABILITY OF THE EQUIPMENT OR THE ABILITY OF THE EQUIPMENT TO MEET ANY PARTICULAR NEEDS OF THE BUYER. THE EQUIPMENT IS POWERED TO OPERATE AS STATED IN THE OPERATING SPECIFICATIONS SUPPLIED WITH THE EQUIPMENT, BUT IT IS UNDERSTOOD AND AGREED TO BUY BUYER THAT ACTUAL OPERATING CAPABILITIES VARY UNDER DIFFERENT OPERATING CONDITIONS FOR WHICH INNOVATECH CAN ASSUME NO RESPONSIBILITY.

BUYER'S EXCLUSIVE REMEDY FOR CLAIMS ARISING UNDER THIS AGREEMENT SHALL BE FOR REPAIR OR, AT INNOVATECH'S SOLE OPTION, REPLACEMENT OF ANY ITEM OF DEFECTIVE EQUIPMENT. INNOVATECH'S LIABILITY FOR ANY LOSSES OR DAMAGE, WHETHER ON ACCOUNT OF NEGLIGENCE, BREACH, AND WARRANTY OR OTHERWISE SHALL IN NO EVENT EXCEED THE PURCHASE PRICE OF THE PARTICULAR ITEM OF EQUIPMENT WITH RESPECT TO WHICH SUCH LOSSES OR DAMAGE OCCURRED.

IN NO EVENT WILL INNOVATECH BE LIABLE FOR ANY DAMAGES CAUSED BY BUYER'S FAILURE TO PERFORM BUYER'S RESPONSIBILITIES, OR FOR ANY LOST PROFITS, LOST PRODUCTION, LOSS OF ANTICIPATED PROFITS OF OTHER INCIDENTAL OR CONSEQUENTIAL DAMAGES, EVEN IF INNOVATECH HAS BEEN ADVISED OF THE POSSIBILITY OF SUCH DAMAGES.

IN NO EVENT WILL INNOVATECH BE LIABLE FOR ANY DAMAGES RESULTING FROM ANY CLAIM AGAINST BUYER BY ANY OTHER PARTY.

FACTORY SERVICE

A warranty will not be valid unless a written claim authorization comes with returned parts. Innovatech will not provide for any shipping costs for items returned for repair. To obtain warranty repairs, buyer must prepay shipment and return all warranty parts to Innovatech. Damage occurring during shipment is deemed the responsibility of the carrier and claims should be made directly with such carrier.

It will be the customer's responsibility to pay for any non-warranty replacement parts plus the current hourly labor rates for any work done on any machine or part. Service is available upon request; call Innovatech for current labor rates.

Innovatech™

BARTELL GLOBAL



Bartell Morrison Inc.
170 Traders Blvd E
Mississauga, Ontario, Canada
L4Z 1W7
Tel: 1-647-953-4100
Fax: 1-647-953-4101



Bartell Morrison (USA) LLC
200 Commerce Drive, Unit A
Freehold, New Jersey, USA
07728
Tel: 1-848-225-8100
Fax: 1-848-225-8101



Innovatech
4701 Allmond Ave
Louisville, Kentucky, USA
40209
Tel: (425) 405-9100
Fax: (425) 405-9101



SPE International
Honeyholes Lane
Dunholme, Lincoln, UK
LN2 3SU
Tel: +44 (0)1673 860709
Fax: +44 (0)1673 861119



**BARTELL
GLOBAL**

**5 BRANDS - 1 SOURCE FOR
GREAT EQUIPMENT**

BARTELL morrison SPE Innovatech CONTEC

BARTELLGLOBAL.COM