

CINQ CERAMIC TILE



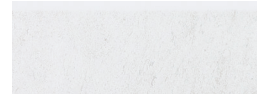
CINQ CERAMIC TILE



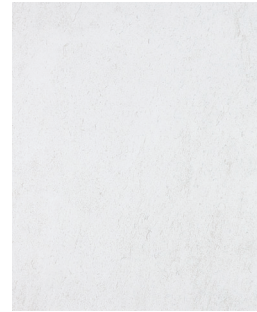
13" x 13" CINQ WHITE FLOOR TILE
46-145



2" x 2" CINQ WHITE MOSAICS
46-150



3" x 8" CINQ WHITE BULLNOSE
52-171



8" x 10" CINQ WHITE WALL TILE
52-170



13" x 13" CINQ CREAM FLOOR TILE
46-146



2" x 2" CINQ CREAM MOSAICS
46-151



3" x 8" CINQ CREAM BULLNOSE
52-173



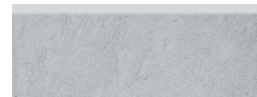
8" x 10" CINQ CREAM WALL TILE
52-172



13" x 13" CINQ GREY FLOOR TILE
46-147



2" x 2" CINQ GREY MOSAICS
46-152



3" x 8" CINQ GREY BULLNOSE
52-175



8" x 10" CINQ GREY WALL TILE
52-174

CINQ CERAMIC TILE



13" x 13" CINQ BROWN FLOOR TILE
46-148



2" x 2" CINQ BROWN MOSAICS
46-153



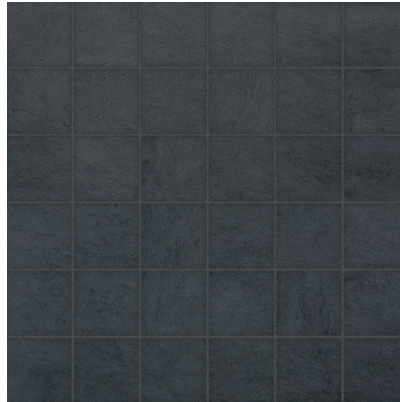
3" x 8" CINQ BROWN BULLNOSE
52-177



8" x 10" CINQ BROWN WALL TILE
52-176



13" x 13" CINQ BLACK FLOOR TILE
46-149



2" x 2" CINQ BLACK MOSAICS
46-154



3" x 8" CINQ BLACK BULLNOSE
52-179



8" x 10" CINQ BLACK WALL TILE
52-178

CINQ CERAMIC TILE

PACKAGING INFORMATION

DESCRIPTION	ITEM CODE					LBS/BOX	PCS/BOX	SQFT/BOX	BOXES/SKID	SQFT/SKID
	WHITE	CREAM	GREY	BROWN	BLACK					
8" x 10 CINQ WALL TILE	52-170	52-172	52-174	52-176	52-178	25.9	20	10.76	92	989.92
13" x 13" CINQ FLOOR TILE	46-145	46-146	46-147	46-148	46-149	51.34	13	15.28	46	702.88
3" x 8 CINQ BULLNOSE	52-171	52-173	52-175	52-177	52-179	11.85	30	n/a	150	4500 pcs.
2" x 2" CINQ MOSAICS	46-150	46-151	46-152	46-153	46-154	37.29	10	11.74	48	563.52

GENERAL SPECIFICATIONS

DESCRIPTION	METHOD	UNIT	13" x 13"
THICKNESS		mm – in	7.8 mm – 5/16"
WATER ABSORPTION	EN ISO 10545-3	(%)	≤ 3
ABRASION RESISTANCE	EN ISO 10545-7	(PEI)	3 – 4*
SCRATCH HARDNESS		(Mohs)	7
BREAKING STRENGTH	EN ISO 10545-4	(lbf)	≥ 300
CHEMICAL RESISTANCE	EN ISO 10545-13	(GL)	Class A – Resistant
FROST RESISTANCE	EN ISO 10545-12		Resistant
STATIC COEFFICIENT OF FRICTION (WET)	ASTM C-1028	(μ)	≥ 0.70
STATIC COEFFICIENT OF FRICTION (DRY)	ASTM C-1028	(μ)	≥ 0.70
DCOF (WET)	ANSI B101.3		≥ 0.50
SHADE VARIATION			V1

* Additional abrasion resistance (pei) information.