



8" Vacuum Pump Suction Cup with Gauge

75022



REINFORCED ERGONOMIC
Non-slip grip

RED LINE INDICATOR
Shows pressure is engaged

PLUNGER
Pump to engage suction

MAINTENANCE
Parts included

CONTROL
Release valve lever

CONVENIENT
Protective carry case

SAFETY SUCTION GAUGE
Red indicates insufficient pressure

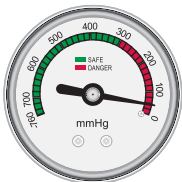
WIDE BASE
For better balance

DURABLE, ANTI-SLIP
8" durable rubber suction pad

285 POUNDS
HOLDING POWER*

RED INDICATES INSUFFICIENT PRESSURE

MAKES HEAVY LIFTING EASY



The QEP® 8" Vacuum Pump with Suction Cup with Gauge makes heavy lifting easy. This hand held portable suction cup has a holding power of 285 lbs. It can be used to lift large tiles, stone, glass and all types of non-porous building material. To use, pump plunger until red line disappears and suction is engaged. During use, red line should not be visible. Gauge safety feature indicates insufficient pressure. Release valve is located on opposite end of plunger. Store with protector cover (included) in durable carrying case.

*When used on a clean, smooth, non-porous surface