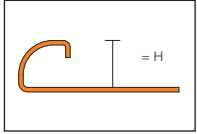


Stainless Steel



Stainless steel



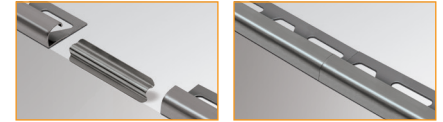
H = mm - in.	Item No.		
	Stainless steel 316L (1.4404 = V4A) (E/V4A)	Stainless steel 304 (1.4301 = V2A) (E)	Brushed stainless steel 304 (1.4301 = V2A) (EB)
4.5 - 3/16	-	RO 45 E	-
6 - 1/4	RO 60 E/V4A	RO 60 E	RO 60 EB
7 - 9/32	-	RO 70 E	RO 70 EB
8 - 5/16	RO 80 E/V4A	RO 80 E	RO 80 EB
9 - 11/32	-	RO 90 E	RO 90 EB
10 - 3/8	RO 100 E/V4A	RO 100 E	RO 100 EB
11 - 7/16	-	RO 110 E	RO 110 EB
12.5 - 1/2	RO 125 E/V4A	RO 125 E	RO 125 EB
15 - 9/16	-	RO 150 E	RO 150 EB

Length supplied: 8' 2-1/2" — 2.50 m

H = mm - in.	Outside corner 90°, end cap		
	Aluminum with stainless steel appearance	Stainless steel 304 (1.4301 = V2A) (E)	Brushed stainless steel 304 (1.4301 = V2A) (EB)
4.5 - 3/16	-	EV/RO 45 E	-
6 - 1/4	ED/RO 60 E	EV/RO 60 E	EV/RO 60 EB
7 - 9/32	-	EV/RO 70 E	EV/RO 70 EB
8 - 5/16	ED/RO 80 E	EV/RO 80 E	EV/RO 80 EB
9 - 11/32	-	EV/RO 90 E	EV/RO 90 EB
10 - 3/8	ED/RO 100 E	EV/RO 100 E	EV/RO 100 EB
11 - 7/16	-	EV/RO 110 E	EV/RO 110 EB
12.5 - 1/2	ED/RO 125 E	EV/RO 125 E	EV/RO 125 EB
15 - 9/16	-	EV/RO 150 E	EV/RO 150 EB

H = mm - in.	Connector for stainless steel profiles
6 - 1/4	V/RO 60 E
8 - 5/16	V/RO 80 E
10 - 3/8	V/RO 100 E
11 - 7/16	V/RO 110 E
12.5 - 1/2	V/RO 125 E

Connector



H = mm - in.	Inside corner 90°	
	Aluminum with stainless steel appearance	
6 - 1/4	ID/RO 60 E	
8 - 5/16	ID/RO 80 E	
10 - 3/8	ID/RO 100 E	
12.5 - 1/2	ID/RO 125 E	

H = mm - in.	End cap	
	Brushed stainless steel 304 (1.4301 = V2A) (EB)	
8 - 5/16	EK/RO 80EB	
10 - 3/8	EK/RO 100EB	
12.5 - 1/2	EK/RO 125EB	

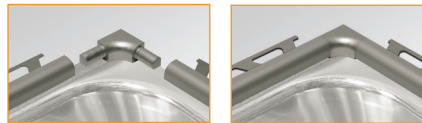
H = mm - in.	Sink corner with 3/8" (10 mm) radius	
	Stainless steel 304 (1.4301 = V2A) (E)	Brushed stainless steel 304 (1.4301 = V2A) (EB)
8 - 5/16	I2S/RO 80 E/V2A	I2S/RO 80 EB/V2A
10 - 3/8	I2S/RO 100 E/V2A	I2S/RO 100 EB/V2A
12.5 - 1/2	I2S/RO 125 E/V2A	I2S/RO 125 EB/V2A

H = mm - in.	Sink corner with 1-1/2" (38 mm) radius	
	Stainless steel 304 (1.4301 = V2A) (E)	
8 - 5/16	ISK/RO 80 E/38	
10 - 3/8	ISK/RO 100 E/38	
12.5 - 1/2	ISK/RO 125 E/38	

Outside corner



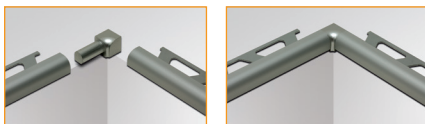
Sink corner with 3/8" (10 mm) radius



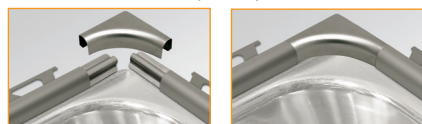
End cap



Inside corner



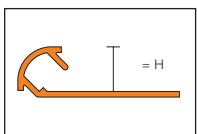
Sink corner with 1-1/2" (38 mm) radius



Aluminum



Aluminum



H = mm - in.	Item No.					
	Satin anodized aluminum (AE)	Polished chrome anodized aluminum (ACG)	Brushed chrome anodized aluminum (ACGB)	Satin nickel anodized aluminum (AT)	Polished nickel anodized aluminum (ATG)	Brushed nickel anodized aluminum (ATGB)
6 - 1/4	RO 60 AE	RO 60 ACG	RO 60 ACGB	RO 60 AT	RO 60 ATG	RO 60 ATGB
8 - 5/16	RO 80 AE	RO 80 ACG	RO 80 ACGB	RO 80 AT	RO 80 ATG	RO 80 ATGB
10 - 3/8	RO 100 AE	RO 100 ACG	RO 100 ACGB	RO 100 AT	RO 100 ATG	RO 100 ATGB
12.5 - 1/2	RO 125 AE	RO 125 ACG	RO 125 ACGB	RO 125 AT	RO 125 ATG	RO 125 ATGB



**2.1 Schluter®-RONDEC**

H = mm - in.	Item No.					
	Satin copper anodized aluminum (AK)	Polished copper anodized aluminum (AKG)	Brushed copper anodized aluminum (AKGB)	Brushed antique bronze anodized aluminum (ABGB)	Satin brass anodized aluminum (AM)	Polished brass anodized aluminum (AMG)
6 - 1/4	RO 60 AK	RO 60 AKG	RO 60 AKGB	RO 60 ABGB	RO 60 AM	RO 60 AMG
8 - 5/16	RO 80 AK	RO 80 AKG	RO 80 AKGB	RO 80 ABGB	RO 80 AM	RO 80 AMG
10 - 3/8	RO 100 AK	RO 100 AKG	RO 100 AKGB	RO 100 ABGB	RO 100 AM	RO 100 AMG
12.5 - 1/2	RO 125 AK	RO 125 AKG	RO 125 AKGB	RO 125 ABGB	RO 125 AM	RO 125 AMG

H = mm - in.	Item No.			
	Brushed brass anodized aluminum (AMGB)	Graphite anodized aluminum (AGR)	Bright black anodized aluminum (AGSG)	Brushed black anodized aluminum (AGSB)
6 - 1/4	RO 60 AMGB	RO 60 AGR	RO 60 AGSG	RO 60 AGBS
8 - 5/16	RO 80 AMGB	RO 80 AGR	RO 80 AGSG	RO 80 AGBS
10 - 3/8	RO 100 AMGB	RO 100 AGR	RO 100 AGSG	RO 100 AGBS
12.5 - 1/2	RO 125 AMGB	RO 125 AGR	RO 125 AGSG	RO 125 AGBS

H = mm - in.	Connector for aluminum profiles
6 - 1/4	V/RO 60
8 - 5/16	V/RO 80
10 - 3/8	V/RO 100
12.5 - 1/2	V/RO 125



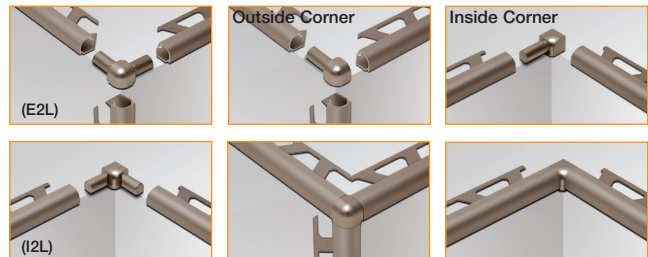
**Note:** Connectors are made of PVC for aluminum profiles.

Accessories	Item No.
Outside corner, end cap	EV/ <i>profile item number*</i>
Inside corner	IV/ <i>profile item number*</i>
Double-leg, outside corner	E2L/ <i>profile item number*</i>
Double-leg, inside corner	I2L/ <i>profile item number*</i>
Sink corner with 3/8" (10 mm) radius	I2S/ <i>profile item number*</i>

**How to order corners:**  
\*To complete the item number for corners, add the corresponding *profile item number* (e.g., EV/ RO 60 AM).



**Note:** Sink corners with 3/8" (10 mm) radius are only available in AE, ACG, AT, ATGB, AK, AKGB, ABGB, AM, and AMGB for sizes 80, 100 and 125 only.



**Note :** Inside/outside double-leg corners (E2L and I2L) and sink corners with 3/8" (10 mm) radius are available in 80, 100 and 125 only. They are not available in textured color-coated aluminum finishes.

**2.1 Schluter®-RONDEC**

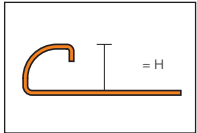
**Length = 3.05 m - 10'**

H = mm - in.	Item No.		
	Satin anodized aluminum (AE)	Polished chrome anodized aluminum (ACG)	Satin nickel anodized aluminum (AT)
8 - 5/16	RO 80 AE/300	RO 80 ACG/300	RO 80 AT/300
10 - 3/8	RO 100 AE/300	RO 100 ACG/300	RO 100 AT/300
12.5 - 1/2	RO 125 AE/300	RO 125 ACG/300	RO 125 AT/300

**Brass**



Brass



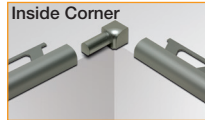
**2.1 Schluter®-RONDEC**

H = mm - in.	Item No.	
	Chrome-plated solid brass (MC)	
6 - 1/4	RO	60 MC
8 - 5/16	RO	80 MC
10 - 3/8	RO	100 MC
12.5 - 1/2	RO	125 MC

**Polished chrome anodized aluminum (ACG)**

H = mm - in.	Polished chrome anodized aluminum (ACG)	
	Outside corner	Inside corner
6 - 1/4	EV/RO 60 ACG	IV/RO 60 ACG
8 - 5/16	EV/RO 80 ACG	IV/RO 80 ACG
10 - 3/8	EV/RO 100 ACG	IV/RO 100 ACG
12.5 - 1/2	EV/RO 125 ACG	IV/RO 125 ACG

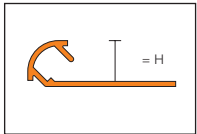
**Note:** Inside and outside corners for the chrome-plated brass (MC) are made of aluminum with a polished chrome finish (ACG).



**Color-coated aluminum, PVC**



Aluminum



**2.1 Schluter®-RONDEC**

H = mm - in.	Item No.	
	Textured color-coated aluminum (TS)	
6 - 1/4	RO	60 color*
8 - 5/16	RO	80 color*
10 - 3/8	RO	100 color*
11 - 7/16	RO	110 color*
12.5 - 1/2	RO	125 color*

Length supplied: 8' 2-1/2" — 2.5 m

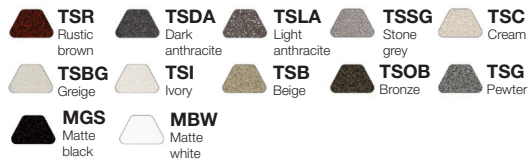
**Accessories**

Accessories		Item No.
Outside corner, 90°	EV/	profile item number*
Inside corner, 90°	IV/	profile item number*
Connector	V/	profile item number*

**2.1 Schluter®-RONDEC**

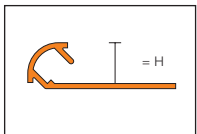
Length = 3.05 m - 10'		
H = mm - in.	Item No.	
	Textured color-coated aluminum (TS)	
6 - 1/4	RO	60 color*/300
8 - 5/16	RO	80 color*/300
10 - 3/8	RO	100 color*/300
11 - 7/16	RO	110 color*/300
12.5 - 1/2	RO	125 color*/300

**\*Color Codes**

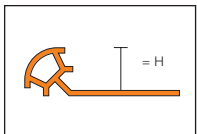


\* To complete the item number, add the **color** code (e.g., RO 60 **TSC**).

Aluminum



PVC



**2.1 Schluter®-RONDEC**

H = mm - in.	Color-coated aluminum		PVC	
	(AC)		(P)	
6 - 1/4	RO	60 color*	PRO	60 color*
8 - 5/16	RO	80 color*	PRO	80 color*
10 - 3/8	RO	100 color*	PRO	100 color*
11 - 7/16	-	-	PRO	110 color*
12.5 - 1/2	RO	125 color*	PRO	125 color*

Length supplied: 8' 2-1/2" — 2.5 m

**\*Color Codes**



To complete the item number, add the **color** code (e.g., RO 100 **BW** or PRO 80 **G**).

Accessories	Item No.	
	Color-coated aluminum (AC)	PVC (P)
Outside corner, end cap	ED/ profile item number*	E/ profile item number*
Inside corner	ID/ profile item number*	I/ profile item number*
Connector	V/ profile item number*	-

**How to order corners:**

\*To complete the item number for corners, add the corresponding **profile item number** (e.g., ED/ RO 60 **BW**).