

Profile Finishes & Colors



Finishes - Aluminum



A

Aluminum



ACB/ACG

Bright or polished
chrome anodized
aluminum



ACGB

Brushed chrome
anodized aluminum



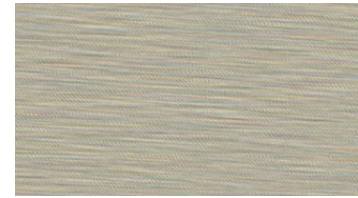
AE

Satin anodized
aluminum



ATG

Polished nickel
anodized aluminum



ATGB

Brushed nickel
anodized aluminum



AT

Satin nickel
anodized aluminum



AKG

Polished copper
anodized aluminum



AKGB

Brushed copper
anodized aluminum



AK

Satin copper
anodized aluminum



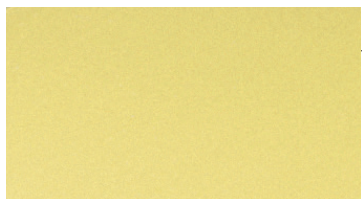
AMG

Polished brass
anodized aluminum



AMGB

Brushed brass
anodized aluminum



AM

Satin brass
anodized aluminum



AGSG

Bright black
anodized aluminum



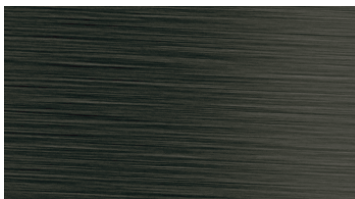
AGRB

Brushed graphite
anodized aluminum



AGR

Graphite anodized
aluminum



AGSB

Brushed black
anodized aluminum



ABGB

Brushed antique
bronze anodized
aluminum

Finishes - Stainless Steel and Brass



E

Stainless steel



EB

Brushed stainless steel



MC

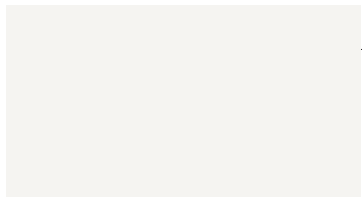
Chrome-plated solid brass



M

Solid brass

Colors - Textured Color-coated Aluminum Schluter®-TRENDLINE



MBW

Matte white



TSC

Cream



TSG

Pewter



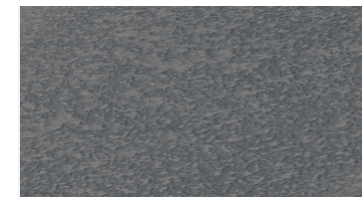
TSI

Ivory



TSB

Beige



TSLA

Light anthracite



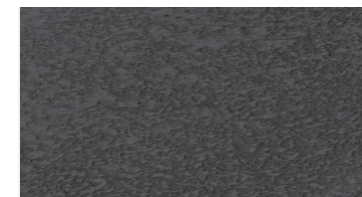
TSBG

Greige



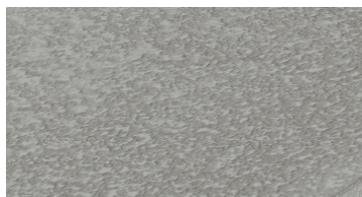
TSR

Rustic brown



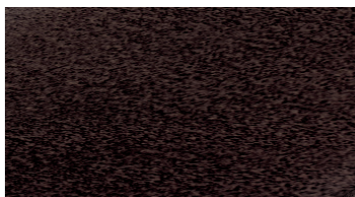
TSDA

Dark anthracite



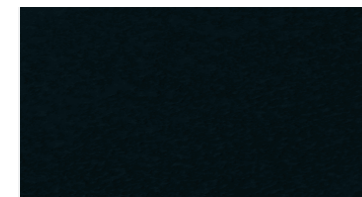
TSSG

Stone grey



TSOB

Bronze

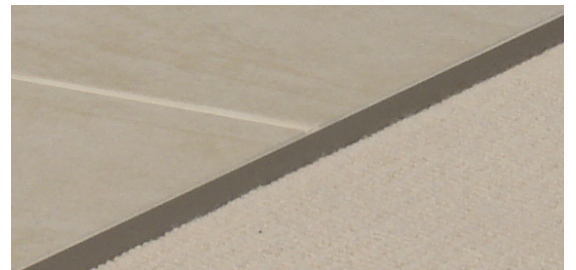





MGS

Matte black





Colors - PVC and Color-coated Aluminum

	BW Bright White RAL 9003		C Cream RAL N/A *PVC only		HG Light Grey RAL 7035
	W White RAL 9010		SG Stone Grey RAL N/A *PVC only		PG Classic Grey RAL N/A
	SP Sand Pebble RAL N/A		FG Grout Grey RAL N/A *PVC only		GM Metallic Grey RAL 9006 *Aluminum only
	BH Bahama RAL N/A		DA Dark Anthracite RAL N/A *PVC only		G Grey RAL 7030
	HB Light Beige RAL 1019		QG Quartz Grey RAL 7039 *Aluminum only		SB Black Brown RAL 8019 *Aluminum only
	RB Red Brown RAL 8003 *Aluminum only		VG Traffic Grey RAL 7043 *Aluminum only		GS Black RAL 9011



		Anodized Aluminum														
Products	Finishes	A	ABGB	ACB	ACG	ACGB	AE	AGR	AGRB	AGSB	AGSG	AK	AKG	AKGB	AM	AMG
 Edge-protection and transition profiles for floors																
SCHIENE <small>also JOLLY</small>			3		3		3									
DECO																
RENO-T																
RENO-TK																
RENO-U																
RENO-RAMP/-K																
RENO-V																
 Finishing and edge-protection for walls and countertops																
JOLLY <small>also SCHIENE</small>			3		3		3									
QUADEC					3											
QUADEC-K																
QUADEC-FS																
RONDEC					3		3									
RONDEC-DB							3									
RONDEC-STEP																
RONDEC-CT																
INDEC																
DESIGNLINE																
DESIGNBASE																
DECO-DE																
DECO-SG																
SCHIENE-STEP																
FINEC																
FINEC-SQ																
ECK-E/-K																
ECK-KI/-KHK																
 Movement joint and cove-shaped profiles																
DILEX-AHK																
DILEX-AHKA																
DILEX-EHK/-HKU																
DILEX-EDP																
DILEX-HKS																
DILEX-KSN																
DILEX-AKWS																
DILEX-KSA																

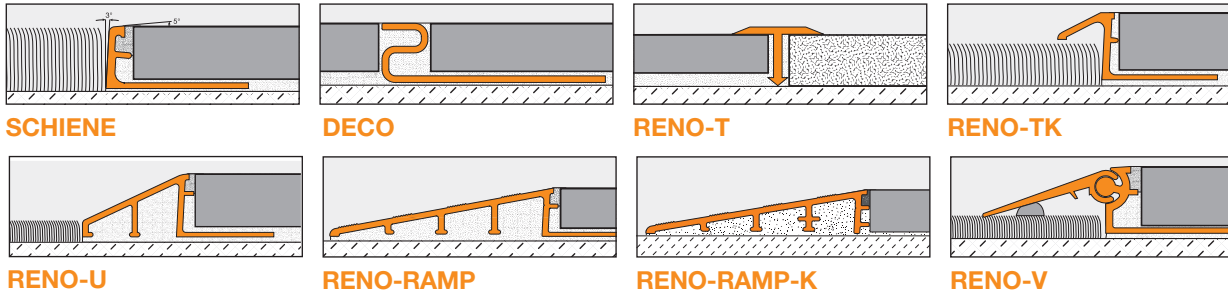
3 Available in 10' (3.05 m) length. Standard length is 8' 2-1/2" (2.5 m).

		Anodized Aluminum											
Products	Finishes	A	ABGB	ACB	ACG	ACGB	AE	AGR	AGRB	AGSB	AGSG	AK	AKG
 Stair-nosing profiles													
RONDEC-STEP													
SCHIENE-STEP													
TREP-FL													
TREP-E/-EK													
TREP-G/-GK													
TREP-SE/-S/-B													
TREP-TAP													
 Profiles for resilient floor and wall coverings													
VINPRO-S													
VINPRO-STEP													
VINPRO-STEP-R													
VINPRO-T													
VINPRO-U													
VINPRO-RO													
		PVC and Color-coated Aluminum											
Products	Colors	BH	BW	C (PVC only)	DA (PVC only)	FG (PVC only)	G	GM (Alum only)	GS				
 Finishing and edge-protection for walls and countertops													
JOLLY			³										
QUADEC		PVC only						PVC only					
RONDEC													
 Movement joint and cove-shaped profiles													
DILEX-EKE													
DILEX-BWA													
DILEX-HKW													
DILEX-HK													
DILEX-PHK													
DILEX-BWS													
DILEX-BWB													
DILEX-AS													

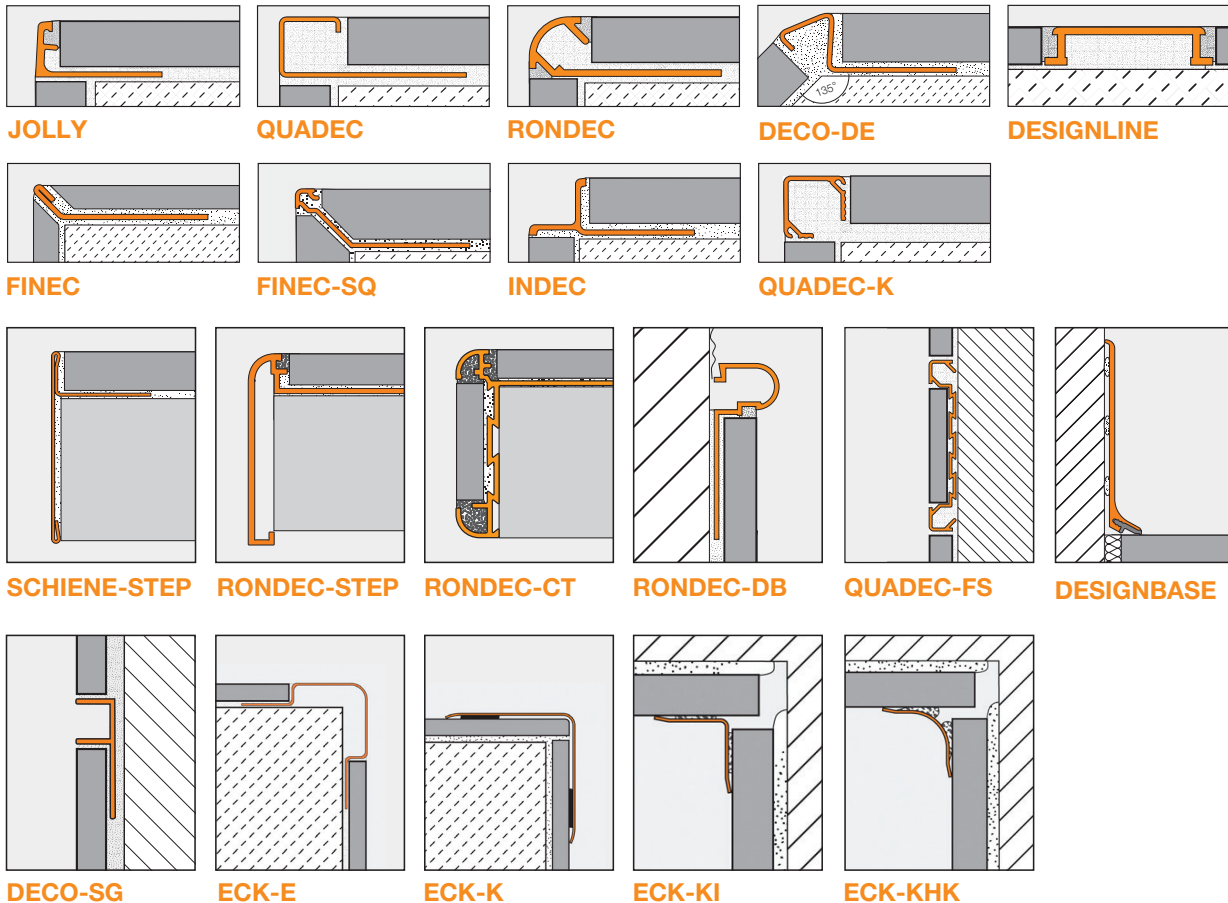
³ Available in 10' (3.05 m) length. Standard length is 8' 2-1/2" (2.5 m).

Schluter®-Profiles

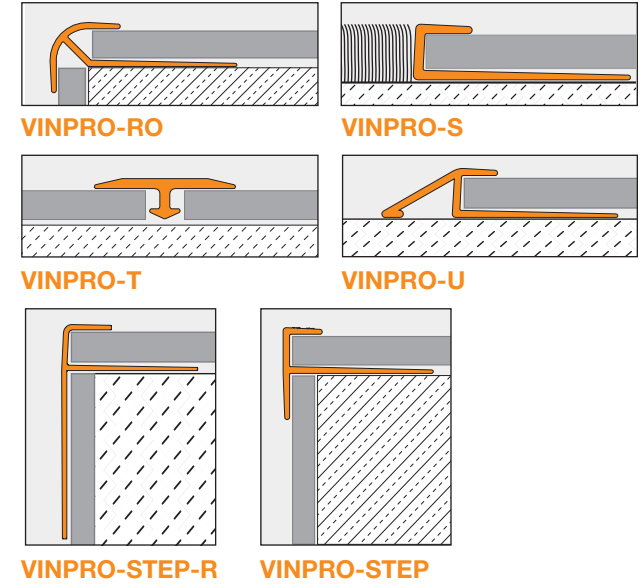
Edge-protection and transition profiles for floors



Finishing and edge-protection for walls and countertops



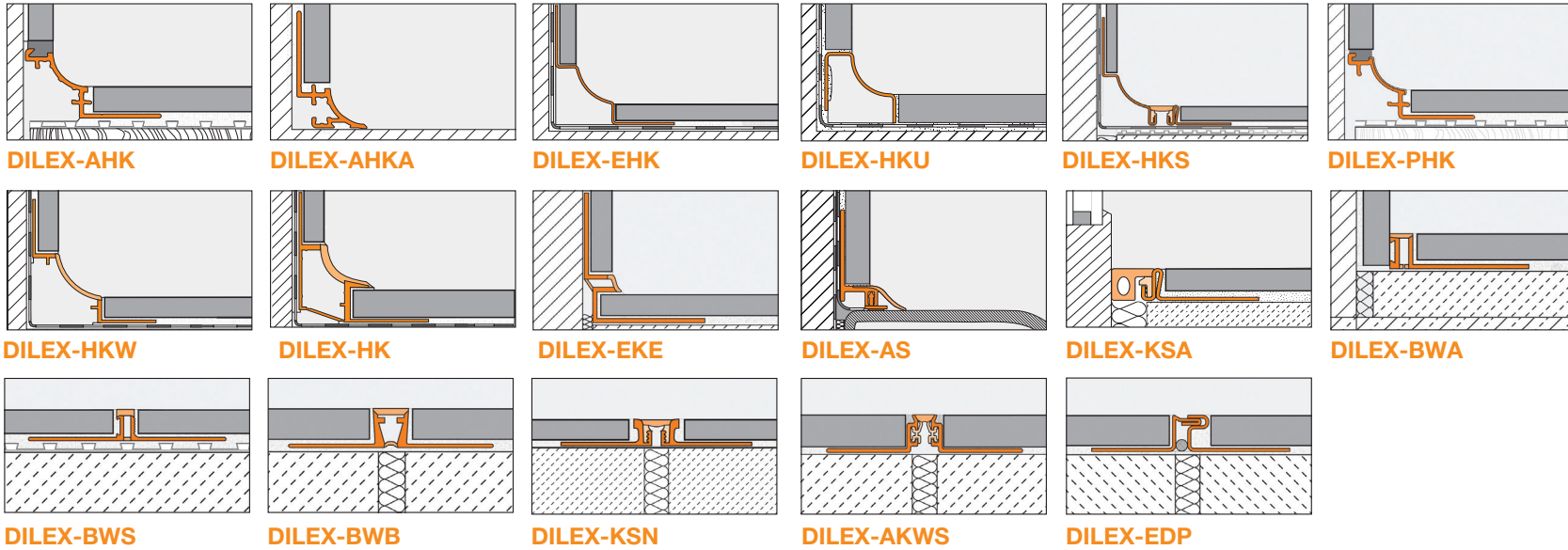
Profiles for resilient floor and wall coverings



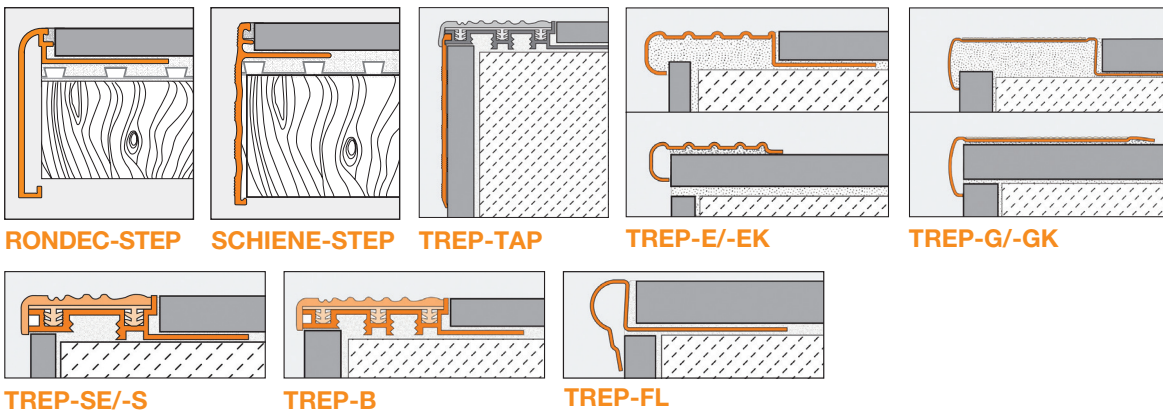
Schluter®-RADIUS
 Products available in radius are: SCHIENE,
 JOLLY, DECO, and RENO-TK.



 Movement joint and cove-shaped profiles



 Stair-nosing profiles





Schluter Systems L.P. • 194 Pleasant Ridge Road, Plattsburgh, NY 12901-5841 • Tel.: 800-472-4588 • Fax: 800-477-9783
Schluter Systems (Canada) Inc. • 21100 chemin Ste-Marie, Ste-Anne-de-Bellevue, QC H9X 3Y8 • Tel.: 800-667-8746 • Fax: 877-667-2410

www.schluter.com