

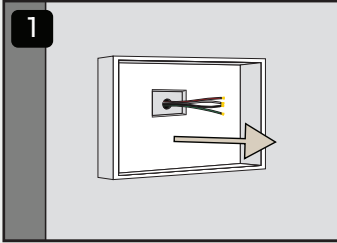
Framed Device Mount

INSTALL GUIDE

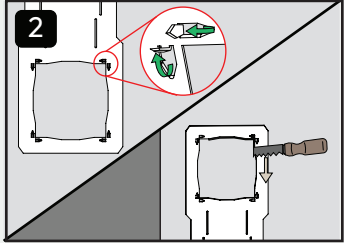


Scan to unlock your free warranty

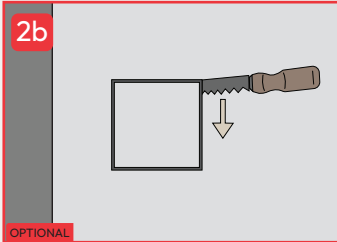
Or – on your phone? Press + hold the QR code to go straight there.



Disconnect power and remove device from wall.

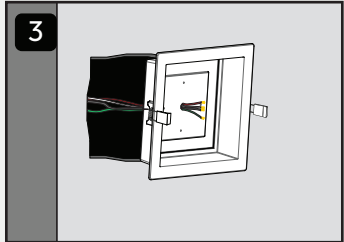


Use **Smash Plate** as guide, secure to wall using pins as nails.

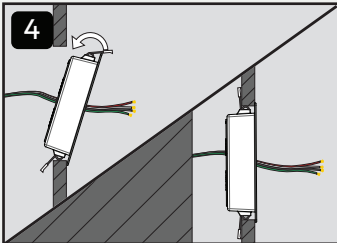


OPTIONAL

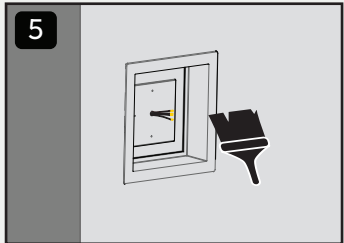
Without **Smash Plate**, measure and cut hole to allow **mount** to be inserted.



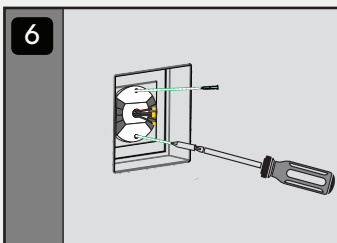
Feed wires through pre-drilled hole and place the **mount** in the cavity.



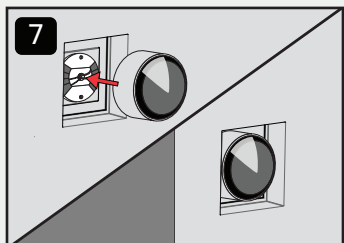
Squeeze **spring clips** through wall opening. Spring tension will secure the **mount** in place.



Paint to match the surface.



Secure device following the instructions of particular model being used.



Connect device, turn on power and that's it! Fittes to perfection.

Fittes

Framed Device Mount

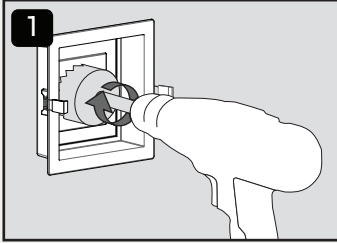
for recessed lighting / pot light

INSTALL GUIDE

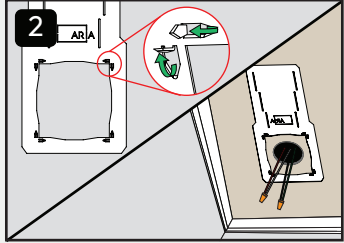


Scan to unlock your free warranty

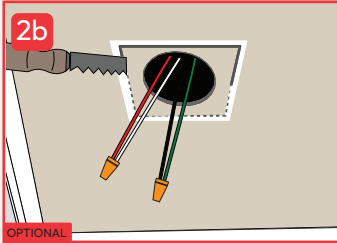
Or — on your phone?
Press + hold the QR code to go straight there.



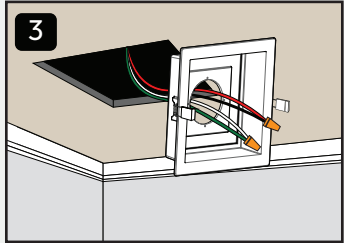
Drill hole in **mount** sized according to dimensions of the pot light being used.



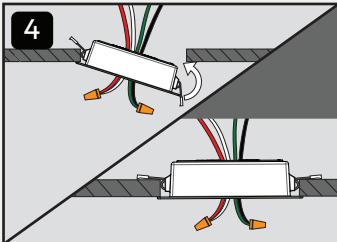
Use **Smash Plate** as guide, secure to wall using pins as nails.



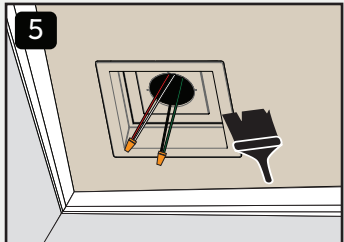
Without **Smash Plate**, measure and cut hole to allow **mount** to be inserted.



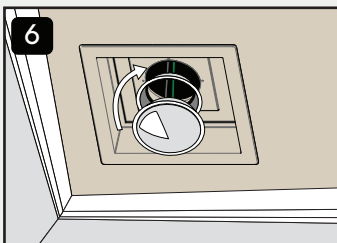
Disconnect power and feed wires through ceiling and **mount**.



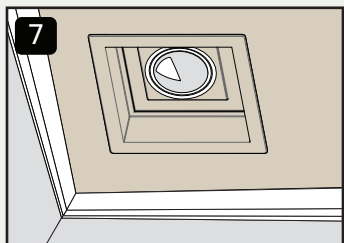
Squeeze spring clips through ceiling opening. Spring tension will secure the **mount** in place.



Paint to match surrounding surface.



Connect wires and feed components through hole. Individual pot light install may vary.



And that's it! Fittes to perfection.

Fittes

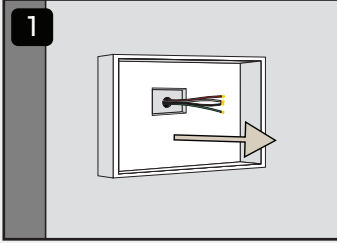
Flush Device Mount

INSTALL GUIDE

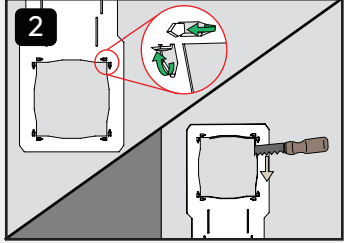


Scan to unlock
your free warranty

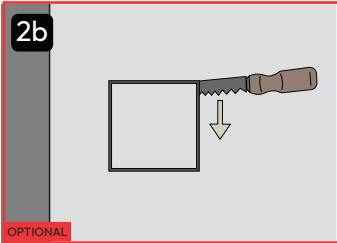
Or – on your phone?
Press + hold the QR code to
go straight there.



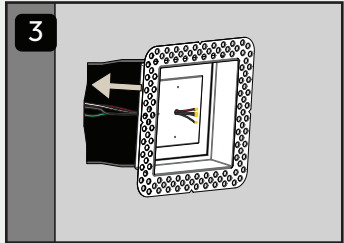
1
Disconnect power and remove device from wall.



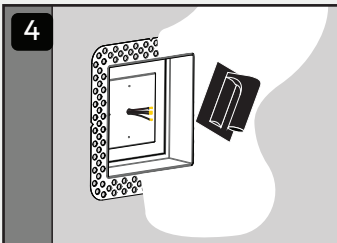
2
Use **Smash Plate** as guide, secure to wall using pins as nails.



2b
Without **Smash Plate**, measure and cut hole to allow **mount** to be inserted.



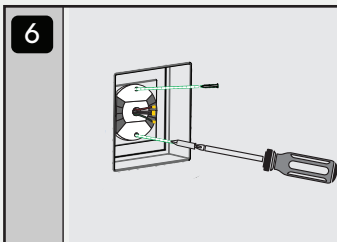
3
Feed wires through pre-drilled hole and place the **mount** in the cavity.



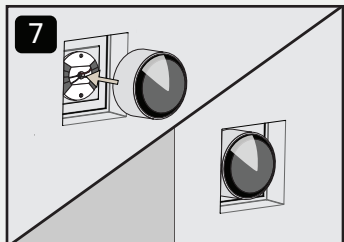
4
Use drywall compound mud to cover **flange**. Once dry, sand. Repeat as needed.



5
Paint to match surface.



6
Secure device following instructions of particular model being used.



7
Connect device, turn on power and that's it! Fittes to perfection.

Fittes

Flush Device Mount

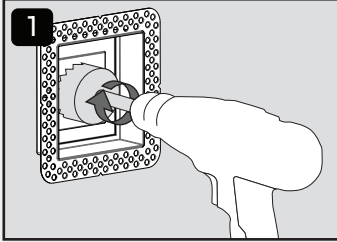
for recessed lighting / pot light

INSTALL GUIDE

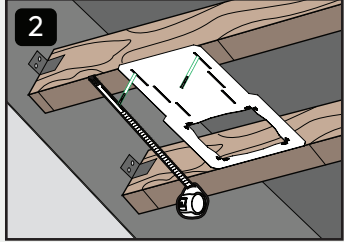


Scan to unlock
your free warranty

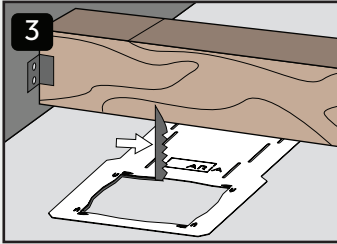
Or — on your phone?
Press + hold the QR code to
go straight there.



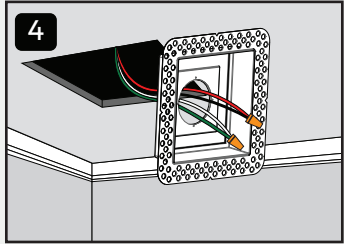
1 Drill hole in **mount** according to the dimensions of the pot light being used.



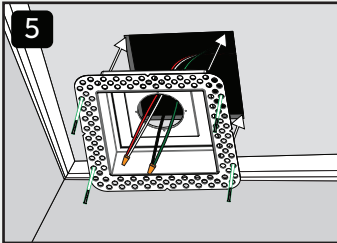
2 Secure **Smash Plate** using using nails or wood screws.



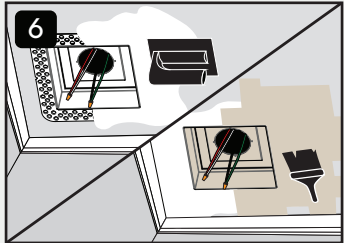
3 Once drywall is installed, use the **Smash Plate** as a guide to cut a hole.



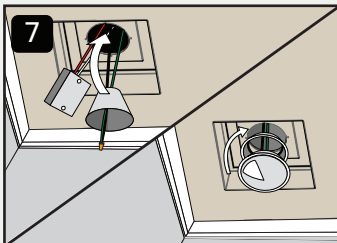
4 Disconnect power and feed wires through ceiling and **mount**.



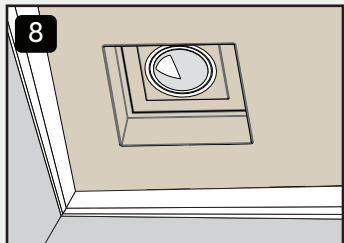
5 Secure **mount** using staples or drywall screws.



6 Use drywall compound mud to cover flange. Once dry, sand. Repeat as needed. Paint to match surface.



7 Connect wires and feed components through hole. Individual pot light install may vary.



8 And that's it! Fittes to perfection.