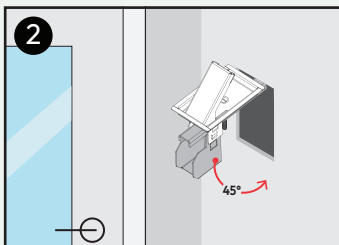
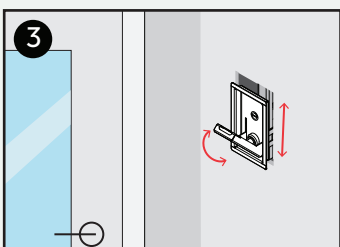


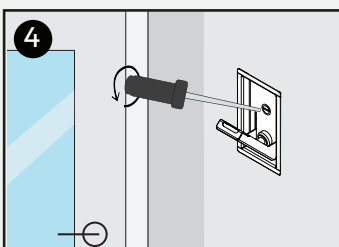
1 Cut a 2 1/16" wide by 3 3/4" tall hole in the mounting surface.^[1]



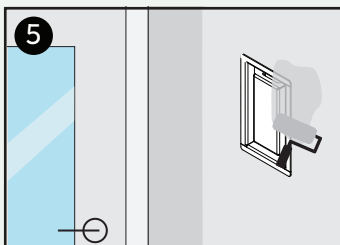
2 Insert at an angle of 45° with the hook held open. The top side of the anchor should be put in first followed by the bottom.^[2]



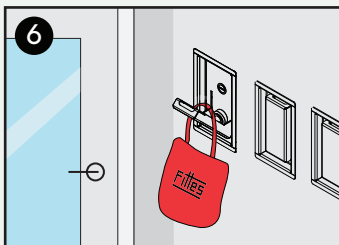
3 Adjust hook into place.



4 Tighten the screw until the hook is held firmly in the wall.



5 Paint to match the wall. Avoid getting paint on the damper mechanism. This can impede the soft-close function.

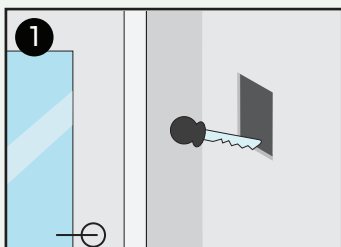


6 Get hanging!

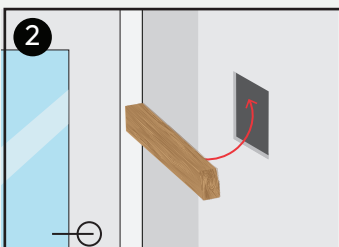
[1] Mounting surface must be between 1/2" and 3/4" thick.

[2] There should be no obstructions in the wall that interfere with the hook's counterweight. Any obstruction will impact the self-closing system.

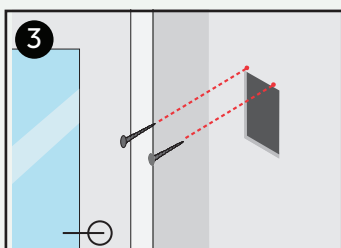




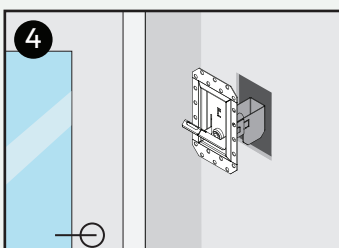
1 Cut a 2 1/16" wide x 3 3/4" tall opening in drywall.



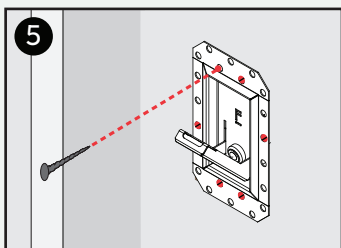
2 To ensure maximum hook capacity, mount using proper drywall anchors. Alternatively a block of wood within the wall can be used as an anchor to screw into.



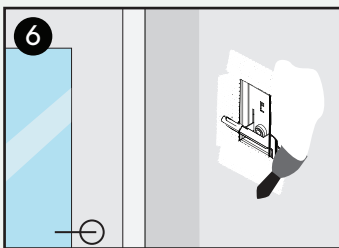
3 Screw wood backer in place/insert drywall anchors.



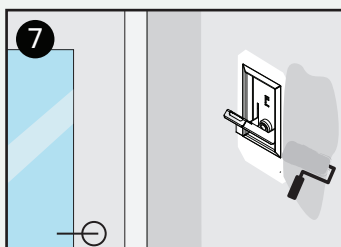
4 Insert with the hook held open. [1]



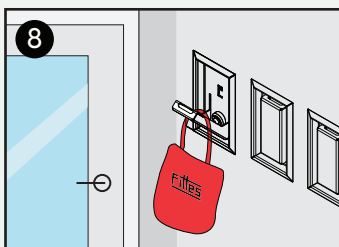
5 Screw drywall bead to wall using the inner most holes for easier mudding.



6 Tape and mud over flange. [2]
Sand and repeat as needed.



7 Paint to match the wall.
Avoid getting paint on the damper mechanism. This can impede the soft-close function.



8 Get hanging!

[1] There should be no obstructions in the wall that interfere with the hook's counterweight. Any obstruction will impact the self-closing feature.

[2] Ensure no mud is left in the hook mechanism. This can impact the self-closing system.