

FITES

No-See Shower Niche [Luxe]

INSTALL GUIDE

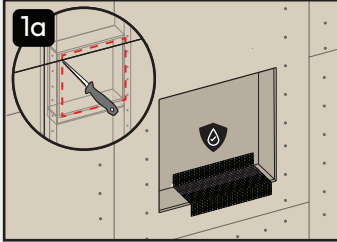


Scan to unlock
your free warranty

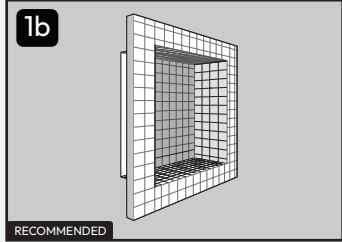
Or — on your phone?
Press + hold the QR code to
go straight there.

Read this bit first!

Ensure all protective plastic film is removed prior to use.



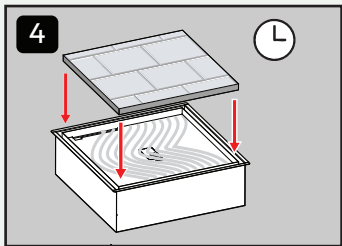
Measure niche opening, prep and waterproof.



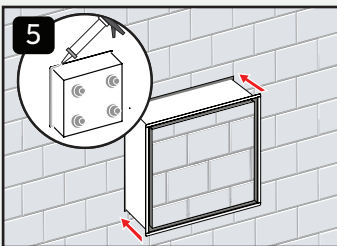
Install compatible waterproof shower niche system. See product specs on website for details.



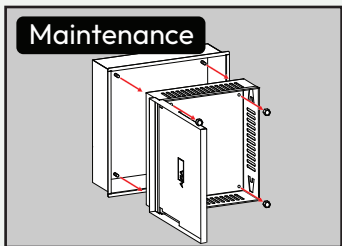
Install tile to surrounding wall.
DO NOT tile within the niche.



Prior to installing the **No-see Shower Niche**, remove all protective film. Apply silicone in **tray**. Set pre-cut **tray** insert into place. Allow time to cure.



Apply silicone around the underside of the **frame** and 4 large masses on the back of the **body**. Fit into place.



For cleaning or maintenance purposes, acorn bolts can be removed to access the **base**.