

Fittes

Flush No-See Device Mount [Luxe]

INSTALL GUIDE

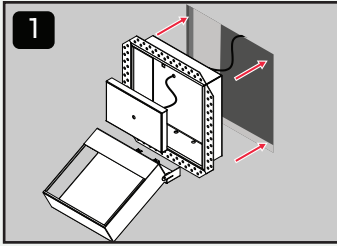


Scan to unlock your free warranty

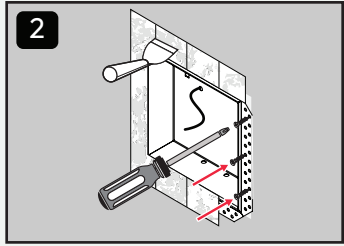
Or — on your phone?
Press + hold the QR code to go straight there.

Read this bit first!

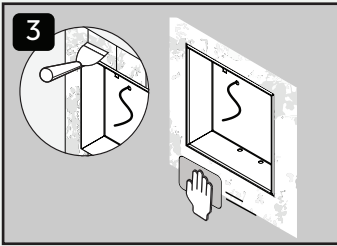
For drywall surface only — do not install in floors!



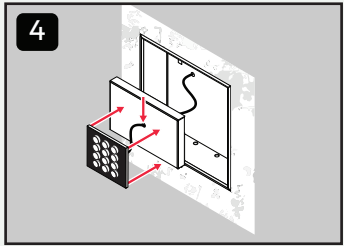
Remove **door** and **mounting plate**. Dry fit **body** into place. Ensure wiring is run through the hole.



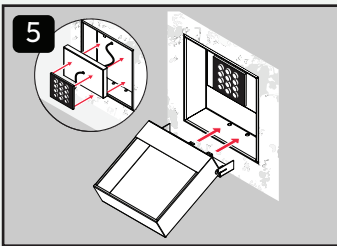
Fasten **body** in place with screws. Mud and tape drywall compound to cover **flange**.



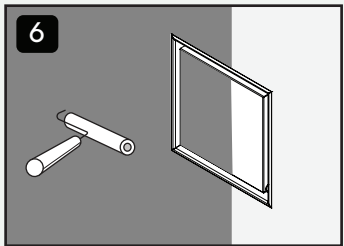
Once dry, sand mud until the surface transitions smoothly. Repeat steps 2 + 3 as needed.



Mount keypad to **mounting plate**. Run wire through the hole in the center of the **mounting plate**.



Slide **mounting plate** and **door** back into place.



Customize to match surrounding wall.