

Surface Applied Fire Retardant

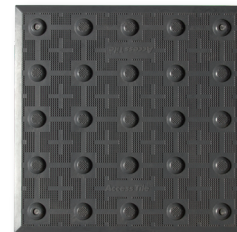
The Most Innovative System

Kinesik Engineered Products is pleased to announce Access Tile[®] FR utilizing our new proprietary **FIRESENTRY-X™ Composite Technology**.

Access Tile[®] FR meets ULC-S102.2 fire standard at less than 25 flame and less than 50 smoke. This ULC certified fire rating for Access Tile[®] FR is the industry's first composite tile meeting the Ontario Building Code requirements. Access Tile[®] FR is the cost effective interior tactile solution for applying TWSI for tactile warning floor surfaces at exit stair wells, vestibules to exit stairs and lobbies, and corridors.

COMPLIANCE

Access Tile[®] FR is in full compliance with Canadian Accessibility Codes and meets the requirements of the Ontario Building Code (OBC) 2012 Table 3.1.13.7. The full product range of Kinesik tactile walking surface indicators meet the most recent AODA, CSA, ISO, NFPA 130, as well as, provincial and national building codes. Kinesik Engineered Products is your one stop source for all tactile systems for interior and exterior applications. Only Kinesik provides a complete range of products designed for safety, code compliance and functionality.

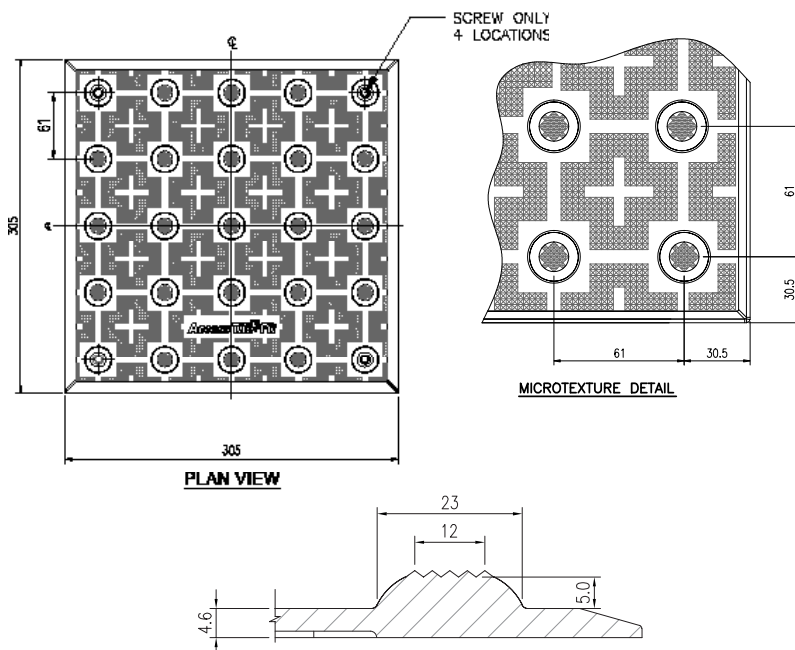


PRODUCT FEATURES

- A cost effective method of complying with TWSI requirements for interior tactile warning floor surfaces at exit stair wells, vestibules to exit stairs and lobbies, and corridors
- A complete system is shipped with the tiles; adhesive & fasteners
- Beveled edges make for a smooth transition that meets Canadian Accessibility Codes
- Easily cut to conform to various sizes and radius landings
- Available in six (6) different sizes
- Comes in three (3) standard colours with Federal colour identification numbers
- 5 year manufacturer's warranty



Tactile Walking Surface Indicator (TWSI) with Truncated Domes



PROFESSIONAL ASSOCIATIONS

Kinesik is proud to be a member of the following organisations



STANDARD COLOURS



Federal Yellow
Code: YW



Dark Grey
Code: DG



Onyx Black
Code: BK

Custom colours available. Let us know how we can help.

STANDARD SURFACE APPLIED FR SIZES

SIZE	PRODUCT CODE	SIZE	PRODUCT CODE
12"x12" (305x305 mm)	ACC-S-1212-FR	24"x36" (610x915 mm)	ACC-S-2436-FR
12"x48" (305x1220 mm)	ACC-S-1248FR	24"x48" (610x1220 mm)	ACC-S-2448-FR
24"x24" (610x610 mm)	ACC-S-2424-FR	24"x60" (915x1524 mm)	ACC-S-2460-FR

TILE SPECIFICATIONS

Test	Description	Requirements
ASTM D 790	Flexural Strength	≥ 156 MPa
ASTM D 638	Tensile Strength	≥ 66 MPa
ASTM C 1028	Static Coefficient of Friction	≥ 0.8 wet/dry
ULC S102.2	Flame Spread	≤ 10
ULC S102.2	Smoke Development	≤ 50
ASTM E648	Critical Radiant Flux	> 1.1 W/cm ²
ASTM D 570	Water Absorption	≤ 0.05%
ASTM C 1026	Freeze/thaw	No effect
ASTM B 117	Salt Spray (300 hrs)	No effect
ASTM D 1037	Accelerated Aging Cycle Testing	No effect
ASTM D 543	Chemical Resistance	No effect

APPLICATIONS

TWSI – Truncated Domes

- Specifically designed for interior use in high-rise building applications in compliance with Ontario Building Code.
- For tactile warning floor surface at exit stair wells, vestibules to exit stairs and lobbies, and corridors.