

Forbo LVT Click installation guides

The installation of Forbo's LVT Click products should be carried out in accordance with the national code of practice for the installation of resilient floor coverings if applicable. Areas to receive flooring should be dust free, fully intact, weather tight and permanently dry.

General laying conditions Forbo LVT Click products			
Product	Allura Click Pro	Allura click Flexcore	Enduro Click Decibel
Storage conditions	<ul style="list-style-type: none"> • 24 hours prior to the installation 18-25 degrees Celsius • max. 5 boxes stacked so the material can properly acclimatize • 48 hours in case of full pallets 		
Levelness substrate	5mm/2m	10mm/2m (length direction)	5mm/2m
Underlay	Separate Allura Click underlay (blue for uneven subfloors prescribed)	Integrated 20dB closed cell PVC foam	Integrated 19dB IXPE foam
Areas subject to high temperature fluctuations	No adhesive required		Glue down
Perimeter expansion gap	1-3mm (possibility for a tight installation)		5mm
Skirting advise	A tighter installation of 1-3mm can be installed without skirtings or against existing skirtings.		Skirting advised (5mm expansion gap).
Installation area	1.000m ² (~33x33m ² , larger areas please consult your local Forbo technician)		Maximum 250m ² , larger areas use Allura
Divisions	Installations over existing expansion joints in the subfloor allowed. Installations into adjacent rooms through doorways allowed.		Each room should be approached separately.
Static loads	Allowed to be installed on top of the material.		30kg/cm ² < 200kg max
	Point loads should be protected with flat end caps suitable for PVC flooring (non-rubber).		
Dynamic rolling loads	50kg per wheel, total weight should not exceed 250kg.	30kg per wheel, total weight should not exceed 120kg. For areas subject to frequent dynamic loads it is advised to locally fixate by using a plasticizer resistant tape/adhesive.	
	The weight of the rolling load should not be centered, but divided over multiple tiles.		

Substrates

In general, it is best to remove old flooring and prepare the subfloor according to the local set guidelines. Click products can be installed over most existing (firm and rigid, non-acoustic) subfloors including ceramics. Areas with local protruding parts or rising/peaking seams should be removed or sanded flush and treated to get a smooth surface.



Concrete slabs or cementitious screeds:

new and existing ground floor slabs must be cast on a damp-proof membrane in accordance with the national code of practice for the installation of resilient flooring, if applicable. If no effective a damp-proof membrane is present or if any doubt exists, a damp-proof membrane should be applied to the surface.

Existing in-situ resin floor finish:

the old finish must be sound, fully bonded and at least 2 mm thick. If flatness, cleanliness and adhesion requirements are not met, the old in-situ floor finish must be removed and the subfloor prepared in accordance with the national code of practice.

Floor paint:

the existing paint layer should be clean and in good condition. Sanding is not necessary if the paint is in good condition.



Wood panel substrates:

(tongue-and-groove boards) - plywood or particle board floors - must be solid and bonded tightly to the subfloor. Height differences between boards of more than 2 mm must be sanded. Floating wood based panels should be removed.

Old resilient floor coverings:

compact vinyl sheet and tiles or compact linoleum:

- Must be in good condition and bonded tightly to the sub floor.
- Loose or broken parts must have been removed and replaced with sound material or leveled with a good quality leveling compound.
- Must be level within the specified requirements.

Existing ceramics tiles:

laid on a sound concrete or cement screed substrate, adhering well to the bedding screed (sealed ceramic tiles) or substrate (adhesive-bonded ceramic tiles) and do not require further treatment if the tiles are within the stipulated requirements described per product below. If the requirements are not met, a general heavy duty, self-smoothing/levelling compound suitable for the intended use in the room must be applied over the entire surface area.



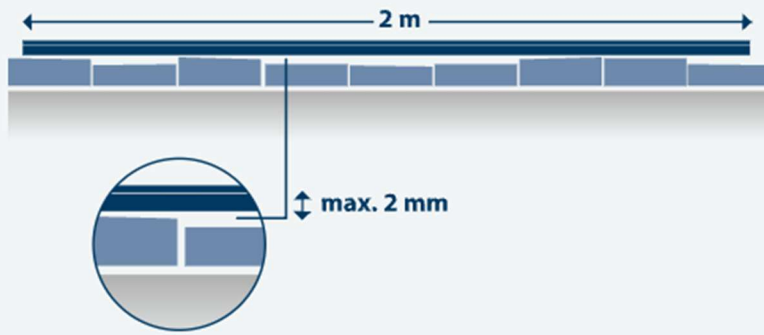
Textile floor finishes:

must be removed and the sub floor prepared in accordance with national codes of practice, if applicable.

Flexible floor coverings

such as acoustic floors as well as resilient (wood) panels that are not rigid and firm must be removed.

If in doubt, existing floor coverings should be removed.



Levelness subfloor and max. allowance ceramic joints:

Allura click Flexcore

Levelness: 5mm over 2m

Ceramic joints: max. 8mm wide and 3mm deep, a max deviation of 2mm between adjacent tiles is allowed.

Allura Click Pro

Levelness: 5mm over 2m in the length direction of the panels

Ceramic joints: Allura click underlay (blue) is prescribed, max. 8mm wide and 3mm deep, a max deviation of 2mm between adjacent tiles is allowed.

Enduro Click Decibel

Levelness; 5mm over 2m in the length direction of the panels

Ceramic joints: max. 5mm wide and 2mm deep, a max deviation of 1 mm between adjacent tiles is allowed.

Note: click joints on the short side of the panels should be prevented to be installed exactly on top or close (>5cm) to ceramic joints.

Underfloor heating

Forbo Flooring products may be installed over underfloor heated floors provided that the maximum surface temperature of the substrate does not exceed 27°C under any condition of use. It is imperative that the underfloor heating systems are previously commissioned and functioning correctly before the floor finish is installed. The temperature of the substrate must not exceed 18°C during the installation of the flooring material.

If necessary, an alternative heating source should be used to maintain the room temperature at a minimum of 18°C before, during and for 72 hours after installation. The temperature of the underfloor heating system can be increased 72 hours after installation. Increase the floor temperature gradually to allow the substrate and flooring material to adapt to the temperature change together.

Installation

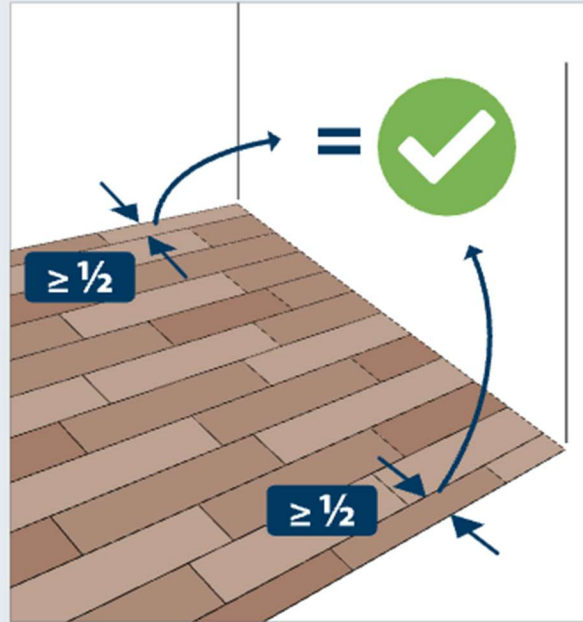
Requirements:

vacuum cleaner, safety gloves, measuring tape, metal ruler, pencil, anti-rebound mallet, utility knife straight blade and pull bar.

Areas where new flooring is to be installed should be clean, fully enclosed and weatherproof, and no other work should be done. Subfloors should be clean and free of contaminants, smooth, sound and permanently dry.

General guideline:

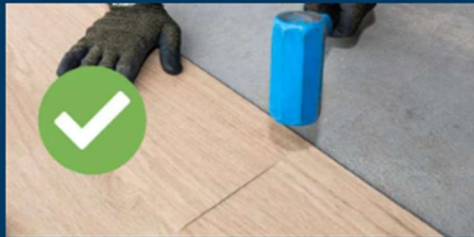
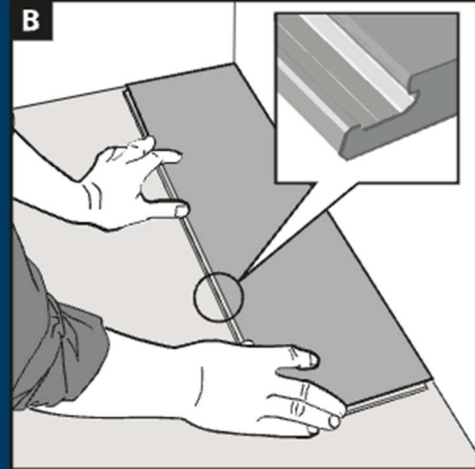
knowing that no wall is straight, installers can best start with drawing a center line and draw a second parallel line at least half the plank width or 1/3 of the tile width from the wall. One can calculate from the centerline with the plank or tile width to make sure there won't be a small cut off piece at the wall. If you work from the centerline and make the correct calculation, you will also not end up with a small cut off piece at the other side of the wall. Small cut pieces have a higher risk of less appealing finishes.



- At least half a plank width or 1/3 tile width around the perimeter and fixed objects in the room.
- Install planks in a random pattern (irregular bond).
- Allura: expansion gaps of 1-3 mm maximum around the perimeter and fixed objects (tight installation). Enduro: 5 mm maximum.

01

Start from left to right, with the tongue groove pointing towards you. The first row of installed tiles is crucial for a good end result. Please see the installation video at the top of the page for the right setup for installation that follows the wall.

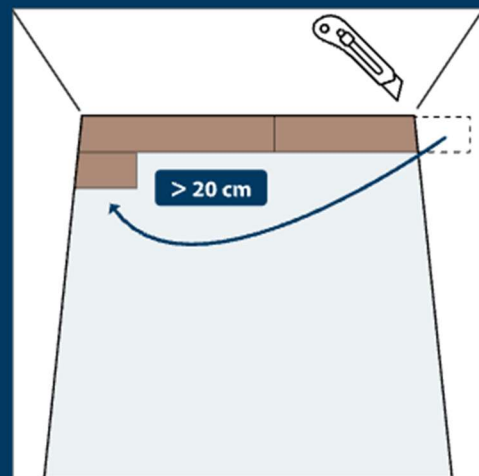


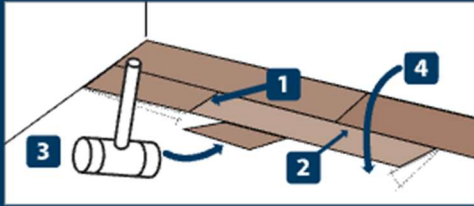
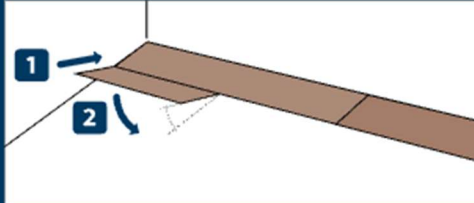
02

Properly line up the short sides and connect the drop down click connections with an anti-rebound mallet (the use of a standard hammer is prohibited). Use enough force to make the click connection on the short side close properly. The resilient product built-up of the products can handle force without breaking the click connection.

03

At the end of the first row, the cut off from the last tile or plank = the starting tile for the next row (min 1/3 tile length or 20 cm plank length).





04

The second row: angle in and secure each tile by tapping with a short cut piece with the click connection (prevent to damage the click connections). The following tiles can be angled in and slid towards the short-side click connection. Make sure both short and length side are properly connected by using an anti-rebound mallet and a short cut piece.

05

Continue this way of working.

