

Grand Manor Vinyl • Engineered Luxury Vinyl

Benefits

Family friendly (including pet)

100% Waterproof
Ultra-durable wear layer with ceramic bead technology
Easy to clean
Stain resistant, including pet stains

Safe and healthy

Antimicrobial protective treatment to inhibit the growth of mold and mildew.
Phthalates-Free products meaning that they will not affect your quality of life
FloorScore® Certified for compliance with rigorous indoor air quality requirements
E1 Certified meaning that the product meets the European standard for indoor air quality
Made of virgin PVC (no recycled content) ensuring a uniform composition that doesn't contain any harmful substances.

Performant and durable construction

Ultra-durable wear layer with ceramic bead technology
High-density rigid core vinyl planks (SPC)
Very sturdy - can withstand heavy furniture such as kitchen cabinets and islands
Performs in extreme temperatures (-4 to 122 °F / -20 to 50 °C)
Commercial abrasion resistance
BLC Certified ® - Ensures that the floor covering you're buying surpasses industry quality standards.

Easy maintenance

100% Waterproof
Antimicrobial, anti-mold and anti-fungal
Easy to clean
Stain resistant, including pet stains

Easy and versatile Installation

Floating installation
2 in 1 - comes with an attached underlayment
Can be installed in 3-season cottages (-4 to 122 °F / -20 to 50 °C)
No acclimation required
Compatible with embedded radiant heating
Can be installed on all floor levels
No telegraphing, even when installed over hard surface flooring
Installations of up to 4225 sq. ft. (65 linear ft.) in an open space without transition moldings
Matching moldings available

Quiet and comfortable

Cork backing for greater temperature and sound insulation
High soundproofing ratings (IIC/STC)

Notable look

Wide and long planks
Matte finish
Registered embossed finish and pressed bevels for the most realistic wood look.

Best-in-class Warranty

30 Days No Questions Asked Replacement

Quickship

Stock product for faster delivery

Grand Manor

Vinyl • Engineered Luxury Vinyl

Product Specifications

Market Segments	Residential
Sub Category	Light SPC
Collection	Grand Manor
Construction	Engineered Luxury Vinyl
Format	Plank
Abrasion Resistance	General Commercial Use
Material	Virgin PVC
Core Material	70% Calcium Carbonate / 30% Virgin PVC
Width	9,134" (232 mm)
Total Thickness	0.315" (8 mm)
Wear Layer Thickness	0.0220" (0.5500 mm)
Core Thickness	0.256" (6.5 mm)
Backing	Cork
Edges	Pressed
Locking System	Välinge 5G
Backing Thickness	0.0590" (1.5000 mm)
Finish	Registered Embossed
Top Surface	UV-Cured Polyurethane & Ceramic Bead Technology
Gloss	Matte
Pattern Repeat	4
IIC	73
STC	72
Design	Wood
Formaldehyde	E1
Vinyl Thickness	n/a
Length	72,126" (1832 mm)
Certifications	FloorScore, E1 Certified, Phthalates-Free, BLC Certification, Virgin PVC, Designed & stocked in Canada
Installation Methods	Floating, Compatible with embedded radiant heating
	🔗 Rigid Engineered Luxury Vinyl Installation Guide - Välinge 5G
	🔗 Rigid Engineered Luxury Vinyl Installation Video - Välinge 5G System

Warranties

- [🔗 Rigid Engineered Luxury Vinyl Warranty Guide](#)
- [🔗 Rigid Engineered Luxury Vinyl Maintenance Guide](#)

Residential use	No Questions Asked Replacement <i>30 days</i> Stain Resistance <i>Lifetime</i> Manufacturing Defects <i>Lifetime</i> Fade <i>Lifetime</i> Wear <i>Lifetime</i> Waterproof <i>Lifetime</i> Petproof <i>Lifetime</i>
------------------------	--

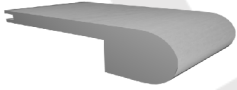
Commercial use	Stain Resistance <i>15 Years</i> Wear <i>15 Years</i> Manufacturing Defects <i>15 Years</i> Fade <i>15 Years</i> Waterproof <i>15 Years</i> Petproof <i>15 Years</i>
-----------------------	---

Grand Manor Vinyl • Engineered Luxury Vinyl

Packaging information

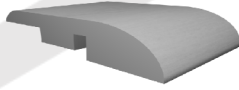
Units Per Box	5
Boxes Per Pallet	48
Box Weight	54.89 pounds (24896.76 grams)
Square Meters Per Box	2.12
Square Meters Per Pallet	101.98
Square Feet Per Box	22.87
Square Feet Per Pallet	1097.76

Moldings



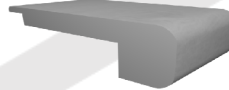
Flushmount Stair Nose - Round

Matching
94.488" X .984" X 2.834"
(2400 mm X 25 mm X 72 mm)



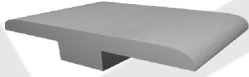
Reducer

Matching
94.488" X 0.375" X 1.771"
(2400 mm X 9.5 mm X 45 mm)



Flushmount Stair Nose - Square

Matching
94.488" X 1.378" X 4.449"
(2400 mm X 35 mm X 113 mm)



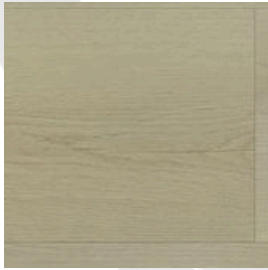
T-Molding

Matching
94.488" X 0.433" X 1.771"
(2400 mm X 11 mm X 45 mm)

Grand Manor

Vinyl • Engineered Luxury Vinyl

Styles offered



#2806 (Plank)
Antiqued Parchment
Registered Embossed



#2807 (Plank)
Vintage Canvas
Registered Embossed



#2808 (Plank)
Stone Hearth
Registered Embossed



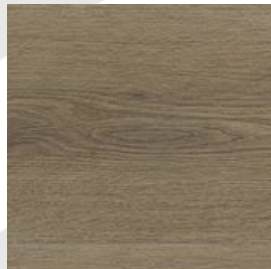
#2809 (Plank)
Natural Putty
Registered Embossed



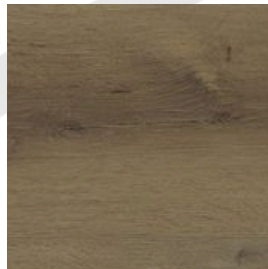
#2810 (Plank)
Antiqued Linen
Registered Embossed



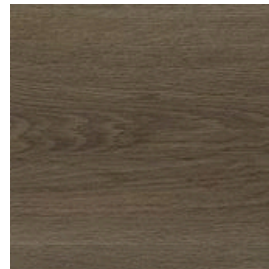
#2811 (Plank)
Briarwood
Registered Embossed



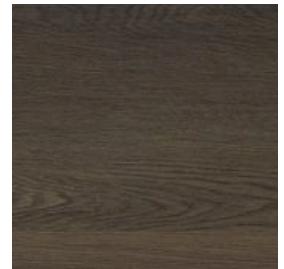
#2812 (Plank)
Cobble Terrace
Registered Embossed



#2813 (Plank)
Golden Estate
Registered Embossed



#2814 (Plank)
Heirloom Brown
Registered Embossed



#2815 (Plank)
Cellar Brown
Registered Embossed



#2816 (Plank)
Cathedral Grey
Registered Embossed



#2817 (Plank)
Chateau Gate
Registered Embossed