

# Designed for Durability

## Engineered for Ultimate Strength™



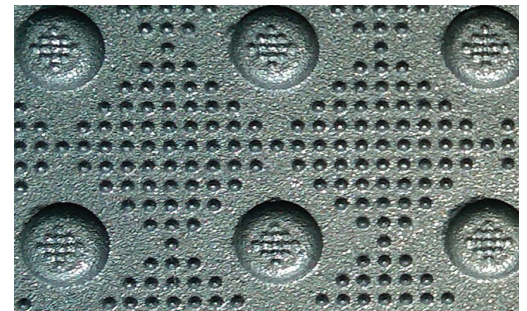
Advantage® Cast Iron Tactile Walking Surface Indicator (TWSI) plates are manufactured in strict accordance with ASTM A-48, Class 35B Grey Cast Iron. The Advantage® Cast in Place System is lightweight with exceptional high strength, and utilizes the most advanced metallurgical Engineering Science and Technology to meet and exceed the most stringent municipal standards. Advantage® Cast Iron is aesthetically pleasing, has exceptional longevity and incorporates integral texture for a permanent slip resistant surface.

Tactile Walking Surface Indicators (TWSI) products for the following and many more applications:

- Curb Ramps
- Pedestrian Crossings
- Transit Platforms
- Vehicular Passage Ways
- Parking Areas
- Top of Stair Landings

### COMPLIANCE

Kinesik Engineered Products Incorporated is in full compliance with Canadian Accessibility Codes. The full product range of Kinesik tactile walking surface indicators meet the most recent AODA, CSA, ISO, provincial and national building codes. Kinesik Engineered Products Incorporated is your one stop source for all tactile systems for internal and external applications. Only Kinesik provides a complete range of products designed for safety, convenience and code compliance.



### PRODUCT FEATURES

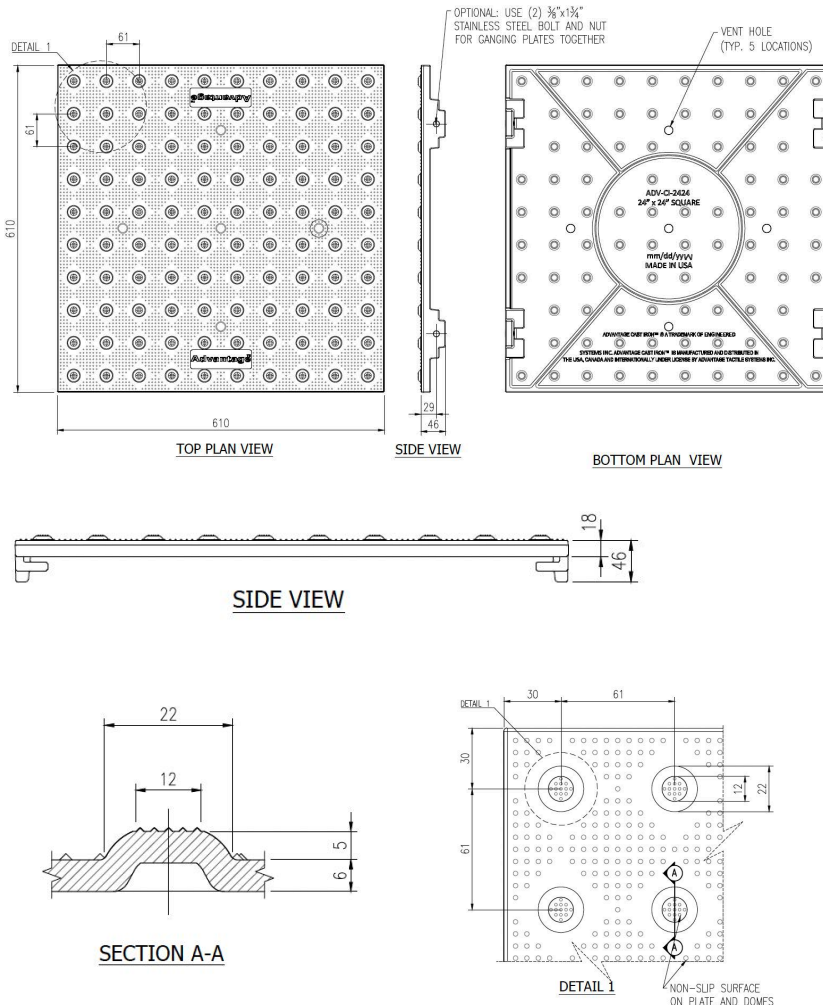
- Lightweight and easy to install
- Bolted connection allows for easy connectability between two or more plates
- Available in various sizes and radii
- Engineered to endure the toughest conditions such as snow plows, overweight vehicular loads and heavy pedestrian traffic
- Maintenance-free natural patina
- ASTM A48, Class 35B Grey Cast Iron
- Can be recycled after its lifecycle
- Largest selection of standard and radii sizes
- 10 year manufacturer's warranty

**ADVANTAGE CAST IRON  
RADIUS CALCULATOR**

Radius Calculator is found on the [Kinesik.ca](http://Kinesik.ca) Resources Page



**Tactile Walking Surface Indicator (TWSI) with Truncated Domes**



## PROFESSIONAL ASSOCIATIONS

Kinesik is proud to be a member of the following organisations



## STANDARD COLOUR



Uncoated  
Natural Patina  
Code: UN

## OPTIONAL COLOURS



Federal Yellow  
Code: YW



Brick Red  
Code: RD



Dark Grey  
Code: DG



Onyx Black  
Code: BK

## ADVANTAGE CAST IRON SIZES

STANDARD SIZE	PRODUCT CODE	RADIAL SIZE	PRODUCT CODE
18"x24" (457x610mm)	ADV-CI-1824	10' (3,048mm)	ADV-CI-24-10R
24"x24" (610x610mm)	ADV-CI-2424	15' (4,572mm)	ADV-CI-24-15R
30"x24" (762x610mm)	ADV-CI-3024	17'5" (5,334mm)	ADV-CI-24-17.5R
		20' (6,096mm)	ADV-CI-24-20R
		25' (7,620mm)	ADV-CI-24-25R
		30' (9,144mm)	ADV-CI-24-30R
		35' (10,668mm)	ADV-CI-24-35R

## PLATE SPECIFICATIONS

Standard Specification for Grey Iron Castings, Class 35B

ASTM Reference	Test Description	Value
ASTM C 1028	Static Coefficient of Friction	≥ 1.1 wet/dry
ASTM A 327	Impact Resistance	No damage @ 54 J
ASTM A 48	Compressive Strength	785 MPa
ASTM E8/E8M-13a	Tensile Strength	≥ 241 MPa
ASTM C 501	Abrasive Wear Index	> 55

## APPLICATIONS

### TWSI – Truncated Domes

- Accessible curb ramps align with the safe pedestrian crossing route across the vehicle roadway.
- An entry into a vehicular route or area where no curbs or other elements separate it from pedestrian route such as curb ramps, wheel chair ramps, top of stairs/escalators and blended transitions.
- An unprotected drop off edge, such as a transit platform where the change in elevation is greater than 250 mm or the slope is steeper than in a ratio of 1:3 (33%).
- The unprotected edges of a reflecting pool.