



MASONRY VENEER INSTALLATION SYSTEM (MVIS™)



Globally Proven Construction Solutions



Our Company

LATICRETE is a 3rd generation family-owned, customer focused, worldwide manufacturer of green flooring and facade materials, used in residential, commercial and industrial applications.

For nearly 7 decades, LATICRETE has provided the technology, products and service – making innovative, permanent installations and repairs for the construction market worldwide.

Architecturally specified and professionally endorsed, LATICRETE offers a dedication to quality that results in globally proven solutions for virtually every flooring, waterproofing and facade application.

Partner with trusted and experienced LATICRETE Sales Specialists dedicated to help provide everything needed from a comprehensive system warranty package to superior service.

As LATICRETE continuously sets benchmarks for quality and innovation, the company has grown to employ a workforce of nearly 2,000 [EF1] associates worldwide and operates in and distributes to every continent, with eight plants in the United States including its headquarters in Connecticut, as well as facilities in Brazil, United Arab Emirates, China, India, Singapore, Australia, Norway, Italy, Mexico and Costa Rica. [EF2] [CS3]

“Our global reach allows us to be a local company in every community we serve, providing unmatched performance and support while remaining on the forefront of trendsetting developments.”

— David A. Rothberg, Chairman of LATICRETE



LATICRETE International, Inc. World Headquarters, Bethany, CT

Get to know LATICRETE,
our people, our values
and our nearly 7 decades
of innovation.



Marina Bay Sands, Singapore



One World Trade Center, NY, NY

LATICRETE® system solutions have been used in the most prestigious and most demanding buildings in the world, from the One World Trade Center and the metro transit systems in New York City to the world's tallest buildings including the Burj Khalifa in Dubai and the PETRONAS Towers in Kuala Lumpur, Malaysia. The Olympic swimming pools in Beijing were all done with the LATICRETE system, as was the dramatic Marina Bay infinity pool that sits atop a 50-story tower in Singapore. No other manufacturer in the world has this track record.



The Ned Hotel, London



Tile & Stone Installation Systems Including Tile, Stone & Surface Care

Ensure a successful installation every time with the most comprehensive selection of innovative tile and stone installation materials available worldwide. LATICRETE® products provide complete system solutions from the substrate up through the grout, after all, we invented thin-set. All, on any type of installation in commercial, industrial, and residential applications including water based surface care products that protect you and all natural stone, tile, quartz, porcelain, vinyl and laminate products.

CSI Division 9



Concrete & Substrate Preparation

A quality finished floor starts with a professionally prepared subfloor, one that guarantees a long lasting, durable installation. Our project tested NXT® surface preparation products are formulated to protect finished floor goods from cracks, moisture vapor and sound transmission. Providing a perfectly flat substrate — ensuring faster installations and longer floor goods life-cycles. And for large volume self-leveling projects, the SUPERCAP® System is a proven time saving, cost-effective system for finishing new concrete or capping existing slabs and is UL GREENGUARD Gold Certified.

CSI Divisions 3 & 9

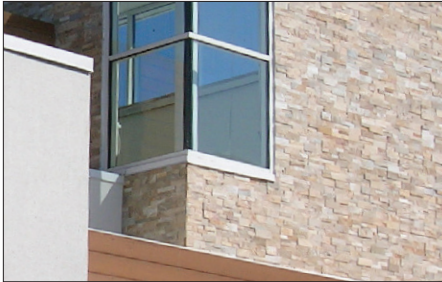


Resinous Coating & Floor Finish Systems

SPARTACOTE® flooring offers seamless, safe, highly durable and easy to clean solutions to meet the most demanding flooring challenges. With tailored systems for industries ranging from Healthcare to Restaurants and everything in-between, SPARTACOTE systems help reduce downtime through innovative, quick return to service products proven through years of successful installations. A variety of available textures, finishes and colors allows customization to match any decor.

CSI Divisions 3 & 9

Since 1956, LATICRETE has led the industry with pioneering advancements—developing high-performance building materials for architects and construction professionals worldwide. From time-tested to ground-breaking, our broad product portfolio provides superior quality and value. We are fully committed to innovation, growth, and a complete system component approach.



Adhered Façade & Wall Finish Systems

Keep up with the increasing popularity of adhered masonry veneers. Designed to deliver superior, long-term performance on masonry projects of all types, our revolutionary Masonry Veneer Installation System (MVIS™) is engineered to provide a permanent, high-strength installation. Using an industry leading waterproofing air and water barrier membrane that protects against air and water penetration in both exterior and interior applications. Another industry first that is innovating how buildings are being built better.

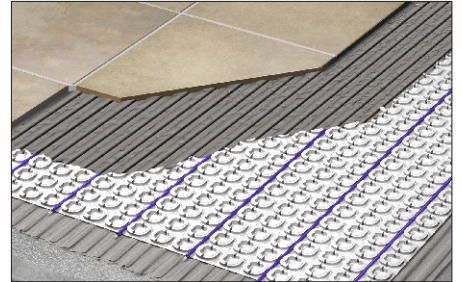
CSI Divisions 4 & 7



Shower Installation Systems

The HYDRO BAN® shower system provides everything you'll need for a worry-free installation. As a single-source supplier, LATICRETE offers waterproof membranes, shower pans, benches, niches and drains all with the trusted performance expected from the HYDRO BAN line. Complete your shower by choosing a variety of LATICRETE adhesives, grouts, sealants and caulks for a beautiful installation that is backed by the industry's best warranty.

CSI Division 9



Radiant Floor Heating

The STRATA_HEAT™ floor heating system is the most advanced radiant floor heating system available in the world. Consisting of a high-performance floor heating wire, an uncoupling mat, two WI-FI enabled thermostats and the world's first heat conductive thin-set additive — the system provides you with the most advanced and efficient floor heating system for your next installation.

CSI Division 9



TABLE OF CONTENTS

Warranties and Training.....	7
Project Spotlight.....	8 – 9
Masonry Veneer Installation System (MVIS™) Details	10 – 11
ABAA Code and Test Results	12
MVIS™ MEMBRANES AND FLASHING	
NEW MVIS™ WCI	13
MVIS Air & Water Barrier	14
LATAPOXY® Waterproof Flashing Mortar	14
NEW LATICRETE Flashing Sealant	15
Waterproofing/Anti-Fracture Fabric	15
POLYMER FORTIFIED MASONRY VENEER MORTAR	
MVIS Veneer Mortar	16
MVIS Lightweight Mortar.....	16
MVIS Hi-Bond Veneer Mortar.....	17
MVIS Thin Brick Mortar	17
SPECIALTY MORTAR/THICK BED	
NEW MVIS Lite Wall Float.....	18
MVIS Premium Mortar Bed	18
EPOXY ADHESIVE	
LATAPOXY 310 Stone Adhesive	19
LATAPOXY 310 Cordless Mixer and Nozzles.....	19
POINTING MORTAR	
MVIS Epoxy Pointing Mortar - Part AB Liquids	20
MVIS Pointing Mortar.....	20
NEW MVIS Premium Pointing Mortar Base	21
POINTING MORTAR AND SILICONE SEALANT	
LATASIL™	22
LATASIL 9118 Primer	22
SPECTRALOCK® Grout - Part C Powders.....	22
POINTING MORTAR AND SILICONE SEALANT COLORS	
Pointing Mortar and Silicone Sealant Colors.....	23
Pointing Mortar and Silicone Sealant Color Guidelines	23
FAQs	
Frequently Asked Questions	24 – 27

LATICRETE offers the best system warranties in the industry

Unmatched Peace of Mind

LATICRETE takes pride in delivering comprehensive system warranty packages and superior service through industry-leading support. With training from our highly experienced technical support team and quick, easy access to supportive online tools, we provide everything you need to ensure high-performance solutions.



LATICRETE 25 YEAR SYSTEM WARRANTY*
 For Exterior Concrete or CMU Facades & Horizontal Concrete Slabs (United States and Canada)
 See Data Sheet DS-0247 or DS-0247CN for complete warranty information.

LATICRETE 15 YEAR SYSTEM WARRANTY*
 For Steel or Wood Framed Exterior Facades (United States and Canada)
 See Data Sheet DS-2104 or DS-2104CN for complete warranty information.

APPLICATION	PRODUCTS
Air Barrier Components	MVIS™ Air and Water Barrier LATAPOXY® Waterproof Flashing Mortar LATICRETE® Flashing Sealant Waterproofing/Anti-Fracture Fabric
Bulk Water Crack Isolation	MVIS WCI MVIS Air & Water Barrier Waterproofing/Anti-Fracture Fabric
Adhesive Mortar	MVIS Veneer Mortar MVIS Hi-Bond Veneer Mortar MVIS Thin Brick Mortar MVIS Lightweight Mortar
Thick Mortar Bed	MVIS Premium Mortar Bed MVIS Lite Wall Float
Spot Bonding	LATAPOXY 310 Stone Adhesive*
Joint Pointing	MVIS Premium Pointing Mortar Base MVIS Pointing Mortar MVIS Epoxy Pointing Mortar
Joint Caulking	LATASIL™ LATASIL 9118

*only for Concrete or CMU Substrate Exterior Facades

Industry-Leading Training and Support

UL GREENGUARD Gold Certification

LATICRETE® low-VOC products are independently certified. Our products help you contribute toward LEED certification.



LEED Support

Our online project certification tool automatically generates required LATICRETE product information for your specific LEED project submittals. Additional LEED information and calculations are available at laticrete.ecoscorecard.com.



LATICRETE Architectural Guidebook

Use this informative online tool to get complete specifications and details for your projects. You can access it at: laticrete.com/MVIS

Training and Education

LATICRETE will hold continuing education seminars right from your office. You can also attend product and installation technology seminars at one of our training centers or a location of your choice.



MVIS™ KEEPS THINGS COOL IN TAMPA

In 2016, Tampa began to flourish, causing the demand for more housing, entertainment, restaurants and shopping (to name a few) to arise.

Plans for a new 56-acre mixed-use development, Water Street Tampa, came underway. The community would sit east of downtown and be one of the largest urban real estate developments currently in the nation. The goal was to develop a brand new, high-profile neighborhood that would unite Tampa's central business district with the waterfront and neighboring communities.

Water Street Tampa unveiled plans to build an innovative district cooling facility amidst the new mixed-use development to transform the city thoughtfully and sustainably. The centralized building would reduce redundant mechanical systems and energy consumption. It also would free up the rooftop space often occupied by individual cooling towers to make available space for more amenities or businesses.

The team went through more than six design iterations before landing on the idea to pay homage to Tampa's history of cigar factories by bringing the 'old' into a brand new modern development. The new building's brick veneer and historical context would emulate and reflect the heritage of the cigar factory and the immigrants who have shaped Tampa into what it is today.

Since the chiller building is entirely composed of concrete and framing, an industry-leading team was needed to provide unique, reliable and competitive thin brick options.

Since the Chiller Plant would be the first project built in the Water Street Channelside district and sits in prime view of the Lee Roy Selmon Expressway, thousands of eyes would be on the Chiller Plant building daily. The most important element of the project was designing a structure that captured the historic look of the cigar factory and the heritage of the area while bringing the old world into the modern day.

Since the building had no roof, a tremendous amount of screening went into the building. The teams underwent special design work so that the walls and corners would be secure, which resulted in the creation of a 33-ft [10-m] tall screen wall, a concrete frame that sits below the cooling tower and a 10" [250 mm] steel structure that kicks back

through the walls to support the building. The screen wall was seamlessly integrated into the design with relief and arches that resembled a cigar factory. In addition, the building was located in a high-velocity wind zone, so the structure would need to sustain a minimum of 150 mph (241 kmh) winds.

"These factors made contractor Masonry Builders install the LATICRETE MVIS™ simple." The MVIS products are designed to deliver superior, long-term performance on thin brick, manufactured stone, and natural stone veneers for interior and exterior applications. The complete system includes air and water barrier products, reinforcing fabrics, various polymer fortified adhesive mortars that provide non-sag performance, and a pointing mortar, and LATASIL™ sealant.

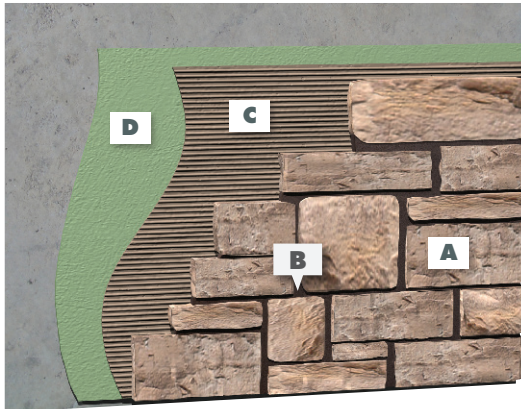
Due to the thin brick's vast exposure area, air and water barriers were vital to prevent weather-related damage. Unlike traditional on-site mortar mixes that are subject to large variations in standards, MVIS is engineered to provide a permanent, high-strength solution that is high-velocity wind zone tested and protects structures against water intrusion. This made the MVIS Air & Water Barrier a perfect match as it bonds directly to the substrate with ease, thanks to its excellent bond strength. It contains a low VOC, self-curing formula with anti-microbial technology, and is ideal for construction projects requiring air and water barriers to improve building efficiency and durability.

Completed in January 2020, the 12,500 ft² [1161 m²] Chiller Plant, which hosts an excess of 30,000 ft² [2787 m²] of thin brick and an entire field of ice makers has proven to be 30 to 40 percent more environmentally sustainable than traditional individual chiller systems on each building throughout the new Water Street Tampa development. The completed plant contains 11 pumps, six cooling towers and three chillers, with additional space for more to be added in the future.

In addition, thanks to the MVIS products, the building more than met the high-velocity wind zone requirement of sustaining a minimum of 150 mph (241 kmh) after passing the Miami-Dade hurricane test at 205 mph (330 kmh). The new district cooling plant also contributes to the WELL Community Standard requirements.

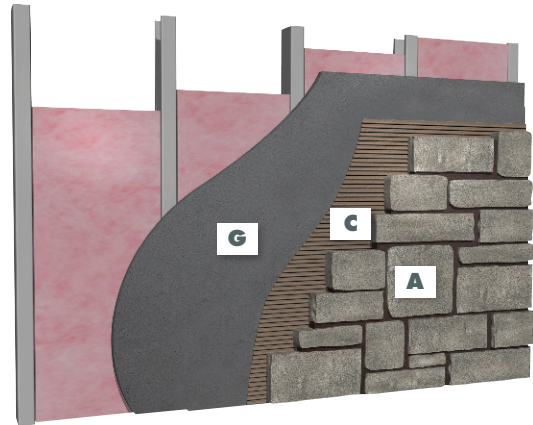


Exterior wall



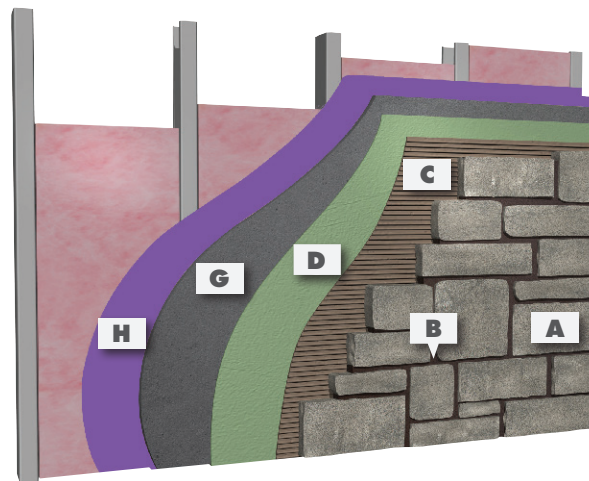
Concrete wall – Direct adhered with fluid applied
MVIS™ Air & Water Barrier

Interior wall



Framed wall with cement backer board substrate

Exterior wall



Framed wall with exterior rated sheathing –
cement backer board substrate

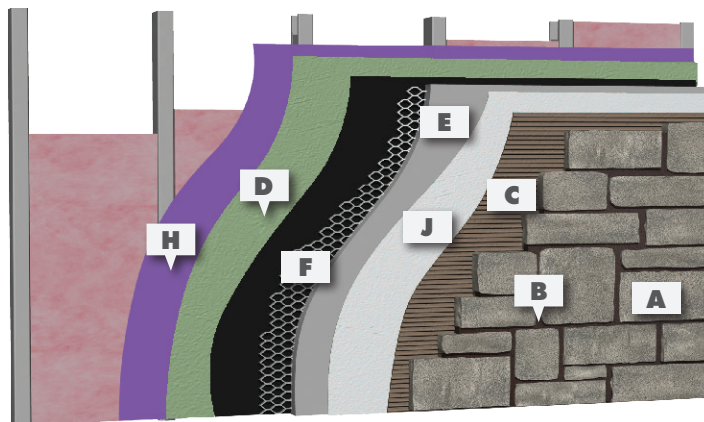
Key

- A Adhered Masonry Veneer
- B MVIS™ Pointing Mortar
- C MVIS Veneer Mortar

- D LATICRETE® Air Barrier or by other
- E MVIS Premium Mortar Bed
- F Metal Lath, 3.4# galvanized diamond wire lath

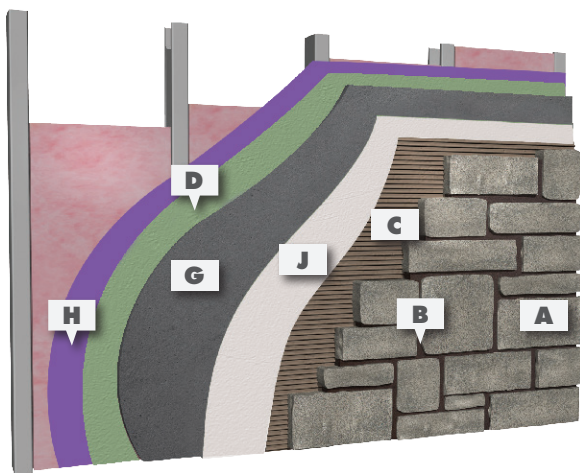
- G Cement backer board (exterior grade)
- H Exterior rated sheathing
- I Concrete or masonry
- J MVIS WCI

Exterior wall



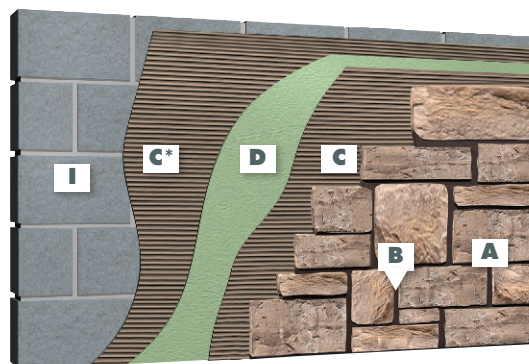
Framed wall with exterior rated sheathing – lath with scratch and brown coat

Exterior wall



Framed wall with exterior rated sheathing – cement backer board substrate

Exterior wall



*Optional if needed to fill voids in the block.

Concrete Masonry Unit (CMU) wall with skim coat – Direct adhered with fluid applied MVIS™ Air & Water Barrier

1. Substrates scheduled to receive manufactured stone, natural stone or thin brick must be structurally sound, rigid and conform to good design/engineering practices in accord with all applicable building codes with maximum deflection under all live, dead and impact loads, including concentrated and all anticipated loads of L/600 for all exterior veneer types. Steel and wood frame constructs shall also be designed to meet this criteria. Lateral bracing and edge support for cement backer board panels is required. Install sheathing panels as directed by board manufacturer's installation instructions and building code requirements.

2. MVIS™ Pointing Mortar is designed to meet product applicable project specifications. MVIS Pointing Mortar does not inhibit efflorescence from occurring in natural or manufactured stone facade installations. Efflorescence is a normal condition that may occur when installing portland cement based products. During installation, strike joints in a consistent time frame relevant to application time. MVIS Pointing Mortar should be thumbprint dry before striking. Striking joints too early or too late can create color inconsistencies.

3. MVIS Pointing Mortar color samples are guides only. LATICRETE does not warrant color matching to any color guide produced. Actual shade and texture will depend on job site

conditions, lighting, installation techniques, and types of tile or stone used. Verify actual appearance and compatibility with a test area before installing. Blend colored mortars with different control numbers. No claims for color shade variations will be honored.

4. Please consult LATICRETE Technical Services for more information. 1.800.243.4788, ext. 1235, www.laticrete.com, technicalservices@laticrete.com.

5. For information on pumpable scratch and brown coats, contact LATICRETE Technical Services.

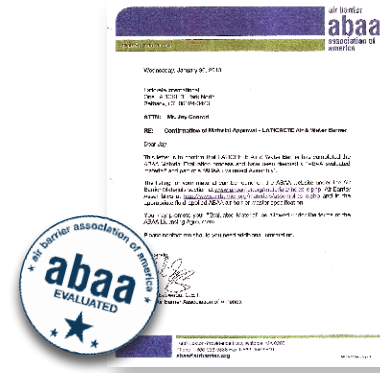
6. For complete application information and limitations consult related Product Data Sheets and Execution Statements related to these details and applicable standards. See Warranty Data Sheet DS-0247 and DS-2104.0 for full information and terms.

7. As a professional courtesy, LATICRETE offers technical services free of charge. The user maintains all responsibility for verifying the applicability and suitability of the technical service or information provided.

8. Design and placement of weather resistive barriers, vapor retarders and air/water barriers to be detailed by project design professional.

Air Barrier Association of America (ABAA) EVALUATED LATICRETE AIR BARRIER ASSEMBLIES

ABAA is the nationally incorporated, not-for-profit association representing the stakeholders in the building enclosure industry. The ABAA's mission is to promote the use and benefits of air barrier systems in the future progressively and professionally. ABAA members consist of a large cross-section of the industry, including manufacturers, suppliers, design professionals, owners, contractors and consultants covering all aspects of the installation system. Ask about our NFPA 285 test assemblies.



AIR BARRIER ASSEMBLY TEST REQUIREMENTS FOR ABAA LISTING

The ABAA Assembly Evaluation Process requires air barrier manufacturers to provide independent test reports for air barrier materials and assemblies. ASTM E2357 has been adopted as a key element for evaluating ABAA criteria. To receive evaluated status, a manufacturer must specify each of the components in the system. This is a significant benefit to the design professional as issues such as compatibility and continuous, supported design are resolved by the manufacturer rather than relying on trial and error methods in the field. ABAA Evaluated Air Barrier Assemblies are only those materials for which all required wall assembly testing has been submitted and ABAA evaluation has been successfully completed.

CONTROLLING AIR FLOW

Air flow carries moisture that impacts materials' long-term performance and structural integrity. Air flow must be controlled to design and build safe, healthy, durable, comfortable, and economical buildings. Working together with the building's HVAC system can assist the control of air flow for the life of the building. This system should be every design professional's key strategy to develop an effective enclosure design, set achievable performance requirements and verify compliance.

CODES AND STANDARDS

Today's building codes require an increase in the energy efficiency of buildings. To meet the challenge, some design professionals utilize building envelope systems to seal a building from air infiltration and exfiltration. Since 2001, many US states have adopted air barrier language into their local energy code or building codes. The International Building Code (IBC), International Energy Conservation Code (IECC), International Green Construction Code (IgCC), ASHRAE 189.1 and ASHRAE 90.1-10 all have requirements for continuous air barriers.

To demonstrate code compliance, LATICRETE successfully completed independent testing under the following:

ASTM E 2357: Standard Test Method for Determining Air Leakage of Air Barrier Assemblies.

ICC ES AC 212: ICC ES Acceptance Criteria for Water Resistive Coatings used as Water Resistive Barriers over Exterior Sheathing.

CAN/ULC S742-11: Canadian Standard Test Method for Air Barrier Assemblies.

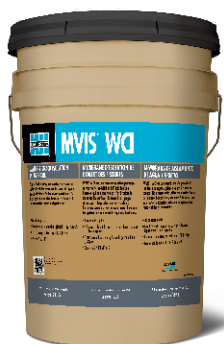
PRODUCTS	ABAA AND CODE REQUIREMENT	TEST RESULT	PROPERTY
MVIS™ Air & Water Barrier	Not to exceed 0.2L/(s • m²) @ 75 Pa (0.04 cfm/ft² @ 1.56 psf)	0.0017 L/(s • m²) @ 75 Pa [0.0003 cfm /ft² @ 1.57 psf]	Air Leakage of Air Barrier Assembly

Hurricane Testing Testing Application Standard (TAS) 202: Criteria for Testing Impact & Non-Impact Resistant Building Envelope Components Using Uniform Static Air Pressure (structural only). (TAS) 203: Criteria for Testing Product Subject to Cyclic Wind Pressure Loading.

NFPA 285: Flame Spread Standard Fire Testing Method for Evaluation of Fire Propagation Characteristics of Exterior Non-Load-Bearing Wall Assemblies Containing Combustible Components.

MVIS™ WCI

Refer to Data Sheet 36616
9268-0005-2



MVIS™ WCI Water Crack Isolation membrane is a single component, load-bearing, fluid applied, bulk water management and crack isolation membrane. MVIS WCI is designed to enhance building longevity.

FEATURES/BENEFITS:

- Excellent bond strength — will not peel, chip, or bubble from substrates
- Bulk water management — prevents water migration through the entire system
- Equipped with Microban® anti-microbial product protection[^]
- Lighter color for ease of inspection — makes inspection for voids easier
- No solvents and non-flammable
- No harmful VOCs

PACKAGING:

5 gal (18.9 L) Pail

Approximate Coverage

250 ft² (23.2 m²)





MVIS™ AIR & WATER BARRIER

Refer to Data Sheet 661.0
9257-0005-2
9257-0401-2



A single component, load-bearing, vapor permeable, fluid applied, waterproofing, crack isolation, air barrier membrane. MVIS™ Air & Water Barrier produces a seamless, monolithic elastomeric coating and bonds directly to a wide variety of substrates. A vital component of MVIS is designed to enhance building longevity, save energy and increase building occupant comfort. Install Adhered Masonry Veneers (AMV) in 1-2 hours.

FEATURES/BENEFITS:

- Industry approved, meets ASTM E2357 Air Leakage of Building Assemblies
- Excellent bond strength, bonds to a variety of substrates
- Helps to prevent air leakage, contributes to overall building energy efficiency
- MVIS™ Air & Water Barrier is an ABAA Evaluated Material and is part of an ABAA Evaluated Assembly

PACKAGING:

Commercial Unit: 5 gal (18.9 L) pail; 36 units per pallet.
Mini Unit: 4 x 1 gal (3.8 L) pails packed in a carton (30 cartons/pallet).

Approximate Coverage	
Per Commercial Unit	250 ft ² (23.2 m ²)
Per Mini Unit	50 ft ² (4.6 m ²)

LATAPOXY® WATERPROOF FLASHING MORTAR

Refer to Data Sheet 070.0
0024-0001-2



An epoxy-based 3 component, trowel-applied, waterproofing membrane. LATAPOXY® Waterproof Flashing Mortar can be used to waterproof seams, gaps or joints between various substrates and metal and PVC pipe penetrations or flashing. It is specifically designed to be used under adhered masonry veneer, stone or brick for rapid installations requiring a fast curing waterproof flashing. LATAPOXY Waterproof Flashing Mortar is flexible, easy to apply and will allow for rapid installations.

FEATURES/BENEFITS:

- Easy to apply using a trowel
- Adheres to metal and PVC pipes, drains and flashing
- Waterproof seam between flashing and adjacent waterproofing materials

PACKAGING:

3.5 gal pail with 2 LATAPOXY Waterproof Flashing Mortar Part A 1.4 lbs (0.65 kg), 2 LATAPOXY Waterproof Flashing Mortar Part B 1.15 lbs (0.5 kg), and 2 LATAPOXY Waterproof Flashing Mortar Part C 5.5 lbs (2.5 kg); 48 units per pallet

Approximate Coverage
45 ft ² /unit (4.2 m ²) at 1/8" (3 mm) thick, depending on application



LATICRETE® FLASHING SEALANT

Refer to Data Sheet 36617
9270-2020-2



LATICRETE® Flashing Sealant is a one-component, fast curing, hybrid elastomeric adhesive and sealant. This product is specifically formulated to meet today's Green Building Standards and has excellent adhesion on a wide variety of substrates.

FEATURES/BENEFITS:

- Excellent bond strength
- Will not peel, chip or bubble from substrates
- Contribute to overall building energy efficiency — Helps maintain heating and cooling requirements for the building structure
- MVIS WCI is compatible with LATICRETE Flashing Sealant as part of a system to complete the building envelope
- Meets ASTM D 1970 Nail Sealability requirements — Helps prevent infiltration of air and moisture
- No solvents and non-flammable
- No harmful VOCs

PACKAGING:

20 oz (592 ml) sausage pack

Approximate Coverage

Approximately 49 lineal feet (14.9 m) per sausage pack at 1/4" x 1/4" (6 x 6 mm) joint width



**WATERPROOFING/
ANTI-FRACTURE FABRIC**

Refer to Data Sheet 237.0
S-09235-NF-19



A ready-to-use thin, flexible, non-woven reinforcement fabric designed for use specifically with LATICRETE Air Barrier. Also, use Waterproofing/Anti-Fracture Fabric to treat inside, outside corners and rough openings to allow faster installations.

FEATURES/BENEFITS:

- Versatile, can be used on interior, exterior, vertical and horizontal applications
- Tear resistant, provides added strength to installation areas with added stress when used with a waterproofing membrane

PACKAGING:

75' (23 m) long roll fabric
6" (15 cm) wide
20 per carton or 1 each

Approximate Coverage

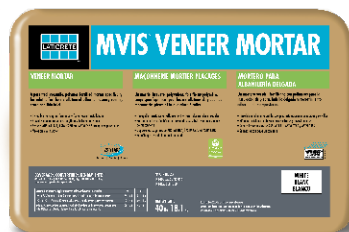
37.5 ft² (3.5 m²) per roll





MVIS™ VENEER MORTAR

Refer to Data Sheet 060.0
0261-0040-21



A patented, versatile polymer fortified adhesive mortar designed specifically to install adhered masonry veneer, stone and thin brick. MVIS™ Veneer Mortar is a high-performance mix that provides maximum non-sag performance for vertical installations and obtains maximum bond strength to the substrate and selected veneers. MVIS Veneer Mortar offers exceptional workability.

FEATURES/BENEFITS:

- Incredible non-sag performance — faster easier installations
- Provides maximum bond strength to substrate and veneer
- Exceeds ASTM C270 and ASTM C482 strength requirements
- Mixes only with water

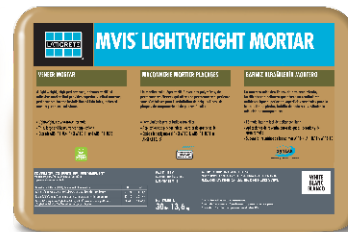
PACKAGING:

40 lb (18.2 kg) bag; 56 bags per pallet; Grey

Approximate Coverage Per 40 lb (18 kg) bag	
VERTICAL APPLICATIONS	
NOTCHED TROWEL	COVERAGE
1/4" x 3/8" (6 mm x 9 mm)	55 - 65 ft ² (5.1 - 6.0 m ²)
1/2" x 1/2" (12 mm x 12 mm)	42 - 50 ft ² (3.9 - 4.6 m ²)
Adhered Masonry Veneer Application Method	28 - 33 ft ² (2.6 - 3.1 m ²)

MVIS LIGHTWEIGHT MORTAR

Refer to Data Sheet 060.1
9369-0030-22



MVIS Lightweight Mortar is a Lightweight, high-performance multi-use, polymer fortified adhesive mortar. MVIS Lightweight Mortar offers tremendous utility, including non-sag wall installations. Now available in custom colors using PERMACOLOR® Select^ color kits for your stacked stone and non-pointed projects.

FEATURES/BENEFITS:

- Unique color options are now available in all LATICRETE® grout colors when mixed with PERMACOLOR Select Color Kits
- Incredible non-sag performance, including large and/or heavy thin brick, stone, masonry veneer
- Lightweight formula. A 30 lb (13.6 kg) bag provides the same coverage as a 50 lb (22.7 kg) bag of traditional mortar
- Exceeds ANSI A118.4, 118.11 and 118.15
- Bonds to many suitable substrates
- Contains no detectable respirable crystalline silica that exceeds OSHA action levels**

PACKAGING:

30 lb (13.6 kg) bag; 56 bags per pallet; White

Approximate Coverage Per 30 lb (13.6 kg) bag	
NOTCHED TROWEL	COVERAGE
1/4" x 3/8" (6 mm x 9 mm)	60 - 70 ft ² (5.6 - 6.5 m ²)
1/2" x 1/2" (12 mm x 12 mm)	40 - 47 ft ² (3.7 - 4.4 m ²)
Adhered Masonry Veneer Application Method	30 - 35 ft ² (2.8 - 3.2 m ²)

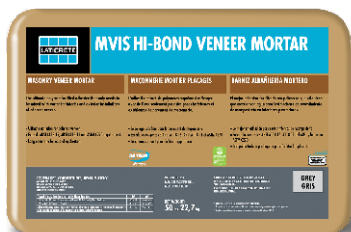
*United States Patent No.: 6784229 B2 (and other Patents)

**OSHA action level set forth in OSHA's Respirable Crystalline Silica (RCS) standard for construction, 29 CFR 1926.1153, as tested by an independent laboratory to be below the OSHA action level for respirable crystalline silica - see laticrete.com/silica



MVIS™ HI-BOND VENEER MORTAR

Refer to Data Sheet 246.0
9354-0050-21



The ultimate, polymer fortified, adhesive mortar for interior and exterior installation of large format adhered masonry veneer, stone, ceramic tile, pavers or thin brick. MVIS Hi-Bond Veneer Mortar mixes easily with water and is formulated to achieve unsurpassed workability and adhesion.

FEATURES/BENEFITS:

- Exceeds ANSI A118.4, A118.11 and A118.15
- Ultimate adhesion for masonry veneers
- Exterior and interior use

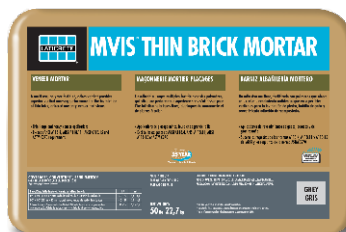
PACKAGING:

50 lb (22.7 kg) bag; 56 bags per pallet; Grey

Approximate Coverage Per 50 lb (22.7 kg) bag	
NOTCHED TROWEL	COVERAGE
1/4" x 3/8" (6 mm x 9 mm)	60 - 70 ft ² (5.6 - 6.5 m ²)
1/2" x 1/2" (12 mm x 12 mm)	40 - 45 ft ² (3.7 - 4.2 m ²)
Adhered Masonry Veneer Application Method	30 - 33 ft ² (2.8 - 3.1 m ²)

MVIS THIN BRICK MORTAR

Refer to Data Sheet 248.0
9359-0050-21



MVIS Thin Brick mortar is a versatile, polymer fortified adhesive mortar designed specifically for the installation of thin brick and thin masonry veneer applications. Excellent non-sag capability and high bond strength provide efficient and secure installations on varied substrates.

FEATURES/BENEFITS:

- Incredible non-sag performance, including large and/or heavy thin brick, stone, and masonry veneer
- Easy to mix and apply - provides quick, efficient thin brick installations
- Exceeds ANSI A118.4, A118.11 and A118.15
- Exceeds ASTM C270 requirements

PACKAGING:

50 lb (22.7 kg) bag; 56 bags per pallet; Grey

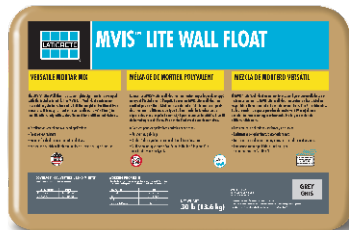
Approximate Coverage Per 50 lb (22.7 kg) bag	
NOTCHED TROWEL	COVERAGE
1/4" x 3/8" (6 mm x 9 mm)	60 - 70 ft ² (5.6 - 6.5 m ²)
1/2" x 1/2" (12 mm x 12 mm)	40 - 47 ft ² (3.7 - 4.4 m ²)
Adhered Masonry Veneer Application Method	30 - 35 ft ² (2.8 - 3.2 m ²)





MVIS™ LITE WALL FLOAT

Refer to Data Sheet 36622
290-0030-21



The MVIS™ Lite Wall Float is a super lightweight mortar developed with the installer in mind. The MVIS Lite Wall Float contains no respirable crystalline silica sand and is half the weight of traditional type S mortars. It is easy to float or repair walls up to 3/4" (19 mm) in one lift. Mixes only with water. No need for additional admixtures. Increase your production and reduce fatigue on the job. You will have a superior performing product to attach adhered masonry veneers to.

FEATURES/BENEFITS:

- Lightweight — same volume of a conventional 60 lb (27.3 L) bag but half the weight
- Excellent for vertical and overhead applications
- Contains no detectable respirable crystalline silica that exceeds OSHA action levels**
- Freeze/thaw resistant
- Ease of mixing and application — can be applied up to 3/4" (19mm) on a vertical surface
- Polymer fortified — no need for latex additives
- Pre-blended — no job site blending of powders required
- Economical — saves time and money
- For use as a scratch or finish coat in place of Type S or Type N mortar
- Can be used to ramp and pitch areas — bonded mortar bed assembly is possible with a slurry bond coat of MVIS Hi-Bond Veneer Mortar, down to a feather edge

PACKAGING:

30 lb (13.6 kg) bag; 56 bags per pallet

Approximate Coverage Per 60 lb (27.2 kg) bag

12 ft² (3.7 m²) at 1/2" (12mm)
9 ft² (2.7 m²) at 3/4" (19 mm)

MVIS™ PREMIUM MORTAR BED

Refer to Data Sheet 263.0
9329-0060-21



A polymer fortified blend of carefully selected raw materials, portland cement and graded aggregates. MVIS Premium Mortar Bed does not require the use of latex admixtures. Just add water to produce a thick bed mortar with exceptional strength. MVIS Premium Mortar Bed is ideal as the brown coat over wire lath. May be used to level walls and may also be used for sloping and horizontal applications.

FEATURES/BENEFITS:

- Polymer fortified — no need for job site mixing of latex additives
- Economical — saves time and money
- High-strength formula
- Exceeds ASTM C270 compressive strength requirements
- Use as a scratch or finish coat in place of Type S or Type N mortar
- Premixed — no job site blending of powders required

PACKAGING:

60 lb (27.3 kg) bag; 56 bags per pallet

Approximate Coverage Per 60 lb (27.2 kg) bag

12 ft² at 1/2" (1.1 m² at 12 mm)
6 ft² at 1" thickness (0.56 m² at 25 mm)
3 ft² at 2" (0.3 m² at 50 mm)

**OSHA action level set forth in OSHA's Respirable Crystalline Silica (RCS) standard for construction, 29 CFR 1926.1153, as tested by an independent laboratory to be below the OSHA action level for respirable crystalline silica - see laticrete.com/silica



LATAPOXY® 310 STONE ADHESIVE

Refer to Data Sheets 679.0 and 679.3
 S-310AB-NC-08 S-310AB-NC-08-1 S-310AB-NC-10
 S-310AB-NC-10-1 S-310AB-CC-10 S-310AB-CC-10-1



A strong, two-component epoxy adhesive for spot-bonding large format tile and stone on vertical surfaces. Easier and faster than traditional methods of veneer installation.

FEATURES/BENEFITS:

- For interior or approved exterior applications
- Comes in both standard and rapid version for faster curing
- No drilling, cutting kerfs, or setting pins
- Allows for quick plumb adjustment while stone is in place to compensate for uneven walls and stone thickness variations
- Won't fail or deteriorate over time
- ANSI A118.3 and ISO 13007-1 R2T classification

PACKAGING:

Kit: 2.6 gal (9.8 L): All components packed in one carton; 40 cartons per pallet. Available in standard and rapid versions. **2 gal (7.6 L):** 8 x 1.06 quart (8 x L) units packed in one carton; 40 cartons per pallet. Available in standard and rapid versions.

Cartridges: 2.3 gal (8.7 L) Cartridge Pack (for use in LATAPOXY® 310 Cordless Mixer): 15 x 0.16 gal (0.6 L) cartridges per carton, 27 cartons per pallet. Available in standard and rapid versions.

LATAPOXY 310 CORDLESS MIXER AND NOZZLES

Refer to Data Sheet 683.0
 RT8480310 RT8480500



This dual-component mixer quickly dispenses LATAPOXY 310 Stone Adhesive onto tile, porcelain, and stone veneers.

FEATURES/BENEFITS:

- Triples productivity of vertical stone and tile installations
- Install hundreds of square feet per day
- Design and gear system allow speed and dosing control
- No mixing—just insert the dual component cartridge, screw on the mixing nozzle, and pull the trigger

PACKAGING:

1 LATAPOXY 310 Cordless Mixer per carton;
 24 cartons per pallet



Approximate Coverage		
Average Inches (or millimeters) Out of Plumb	LATAPOXY® 310 Stone Adhesive Thickness	Approximate Coverage/10 Liter Units
Plumb Wall 1/8" (3 mm)	1/8" thick (3 mm)	300 - 325 ft ² (27 - 30 m ²)
1/4" (6 mm)	1/4" thick (6 mm)	150 - 170 ft ² (14 - 16 m ²)
1/2" (12 mm)	1/2" thick (12 mm)	75 - 80 ft ² (7 - 7.5 m ²)





MVIS™ EPOXY POINTING MORTAR - PART AB LIQUIDS

Refer to Data Sheet 273.0
S-228P4-NS-03



A three-component, high-performance epoxy-based pointing mortar system, MVIS Epoxy Pointing Mortar provides superior joint durability and stain resistance. The non-sag formula mixes and installs with ease.

Note: SPECTRALOCK® Part C Color sold separately

FEATURES/BENEFITS:

- Intended use for structural glazed block, glazed thin brick, and pre-sealed finishes
- Residential, commercial, and industrial
- Interior and exterior use
- Vertical and overhead applications
- Wet areas
- Easy to maintain – cleanable to the original color
- 80 minutes working time at 70°F (21°C)
- Tough, durable and crack resistant

COLORS:

See the Pointing Mortar Color Chart on page 19 for a list of available colors.

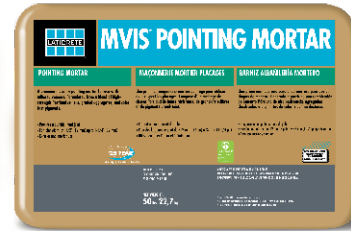
PACKAGING:

MVIS Epoxy Pointing Mortar Part A: 4 x 1.3 lb (0.6 kg), MVIS Epoxy Pointing Mortar Part B: 4 x 1.3 lb (0.6 kg), gloves, sponge, and cleaning packets packed in one carton; 44 cartons per pallet.

Note: SPECTRALOCK® Part C Powder required and sold separately.

MVIS POINTING MORTAR

Refer to Data Sheet 228.0
04XX-0050-2



A factory-prepared, high-performance mortar system, MVIS Pointing Mortar is designed to be mixed with water. Formulated from a blend of high-strength portland cement, graded aggregates, and color-fast pigments. Provides a joint that is dense, hard and durable.

FEATURES/BENEFITS:

- Provides a durable, hard joint
- For joint widths of 3/16" (5 mm) up to 1-1/4" (32 mm)
- Exterior and interior use

COLORS:

See the Pointing Mortar Color Chart on page 19 for a list of available colors.

PACKAGING:

50 lb (22.7 kg) bag; 56 bags per pallet

Approximate Coverage Standard unit for pointing joint

600 - 650 linear ft (183 - 198 linear m) of
3/8" wide x 1/4" deep joint (9 mm x 6 mm)

Nominal Thickness / Approximate Coverage

700 - 750 linear ft (213 - 229 linear m) with
3/8" wide by 1/4" (9 mm x 6 mm) deep joint

* LATICRETE makes no guarantee on color match to our grout color card and color tools. For stone applications, do not use colored adhesive mortar as a substitute for grout. Always conduct a test area to validate performance and results.



MVIS™ PREMIUM POINTING MORTAR BASE

Refer to Data Sheet 36653
28XX-0050-2



MVIS™ Premium Pointing Mortar Base is a premium, factory-prepared, high performance & fast setting masonry pointing mortar that offers the industry's first dispersible dry pigment solution that can allow for a wide range of colors. It also provides a masonry pointing mortar joint that is dense, hard, and color consistent.

FEATURES/BENEFITS:

- Intended use for structural glazed block, glazed thin brick, and pre-sealed finishes
- 40 colors – Excellent design flexibility
- Consistent color and stain-resistant
- Strong and durable, fiber-reinforced

Each PERMACOLOR® Select Color Kit contains two Color Packets.

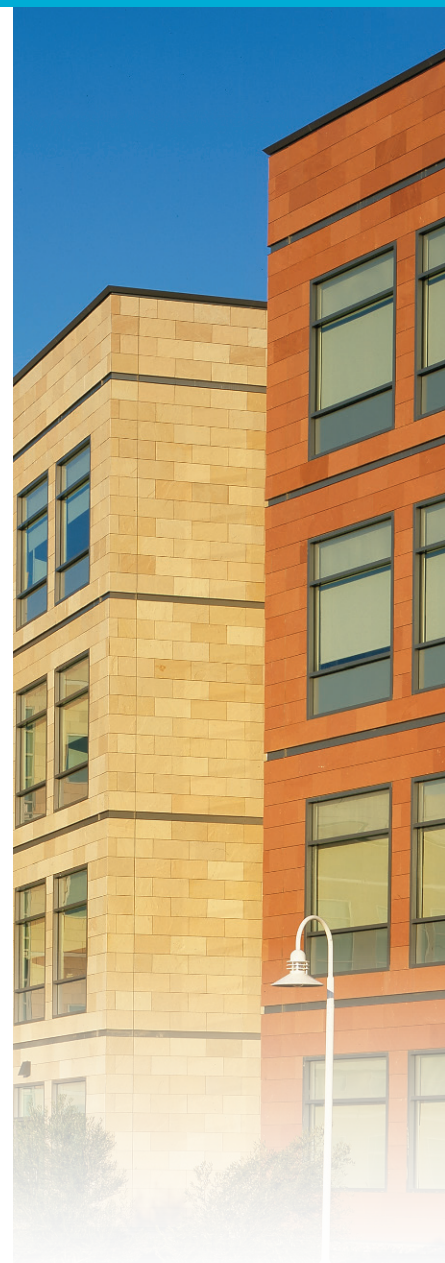
Use 4 Color Packets when mixing with 50 lb (22.7 kg) Pointing Base

COLORS:

PERMACOLOR Select Color Kit: Available in all 40 LATICRETE colors (10 x carton). Each PERMACOLOR Select Color Kit contains 2 Color Packets. See Color Chart on page 19.

PACKAGING:

50 lb (22.7 kg) bag; 56 bags per pallet



Dissolve 2 PERMACOLOR® Select Color Kits (4 packets) in water, add one 50 lb (22.7 kg) bag of MVIS™ Premium Pointing Mortar Base and mix. You are ready to point!

Refer to Data Sheet 250.0 for mixing instructions



Approximate Coverage

700 - 750 linear ft (213 - 229 linear m)
with 3/8" wide by 1/4" (9 mm x 6 mm) deep joint



LATASIL™

Refer to Data Sheet 6200.1
62XX



A 100% silicone sealant for use in coves, corners, changes in plane, and expansion joints in exterior and interior applications of tile and stone. LATASIL™ silicone sealant is available in 40 colors, as well as clear.

FEATURES/BENEFITS:

- Can be used in water features and other wet areas when used with LATASIL Primer 9118
- Conforms to ASTM C920 and ASTM C794 adhesion properties

COLORS:

See the Pointing Mortar Color Chart on page 19 for a list of available colors.

PACKAGING:

10.3 oz (305 ml) cartridges; 6 cartridges per carton; 240 cartons per pallet
5 gal (18.9 L) pail; 24 units per pallet.

LATASIL 9118 PRIMER

Refer to Data Sheet 6528.1
9118-0601-2



A single component primer designed to increase the adhesion of LATASIL with porous stone or permanently wet/underwater applications.

FEATURES/BENEFITS:

- Prevents picture framing in porous stones
- Easy brush application

PACKAGING:

8 oz (240 ml) bottle; 5 bottles per carton; 50 cartons per pallet

**SPECTRALOCK®
PART C COLORS**

Refer to Data Sheet 685.0
12XX-0409-2



For use with MVIS™ Epoxy Pointing Mortar Part AB liquids sold separately.

FEATURES/BENEFITS:

- Excellent color uniformity
- Mold and mildew resistant
- Never needs sealing

COLORS:

See the Pointing Mortar Color Chart on page 19 for a list of available colors.

PACKAGING:

Full Unit:
9 lb (4.1 kg) container
4 containers per carton
44 cartons per pallet

Approximate Coverage Per cartridge

THICKNESS	COVERAGE
1/4" x 1/4" (6 mm x 6 mm)	25 linear feet (7.62 m)
3/8" x 3/8" (9 mm x 9 mm)	11 linear feet (3.35 m)





Scan for Color Selector

Clear



03 Silk



23 Antique White



35 Mocha



45 Raven



57 Hot Cocoa



66 Chestnut Brown



87 Stormy Grey



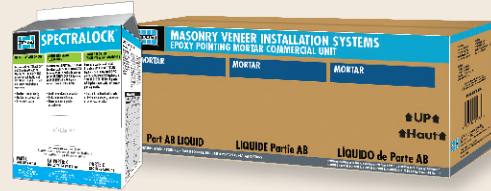
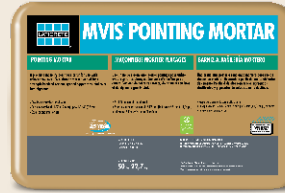
93 Fossil



PPMB MVIS™ Premium Pointing Mortar



PM MVIS Pointing Mortar



EPM MVIS Epoxy Pointing Mortar



L LATASIL™ (Also available in Clear)

09 Frosty



17 Marble Beige



18 Sauterne



22 Midnight Black



24 Natural Grey



27 Hemp



30 Sand Beige



34 Sandstone



39 Mushroom



40 Latte



42 Platinum



44 Bright White



46 Quarry Red



52 Toasted Almond



53 Twilight Blue



56 Desert Khaki



58 Terra Cotta



59 Espresso



60 Dusty Grey



61 Parchment



67 Autumn Green



78 Sterling Silver



81 Butter Cream



85 Almond



88 Silver Shadow



89 Smoke Grey



90 Light Pewter



91 Slate Grey



94 Walnut



95 Mink



96 Steamship



97 Iron



POINTING MORTAR AND SILICONE SEALANT COLOR GUIDELINES

All pointing mortar and sealant samples are guides only. LATICRETE does not warrant color matching to this color chart or any color guide produced. Actual shade and texture will depend on job site conditions, lighting, installation techniques and types of adhered veneer used, and may vary from any color charts, color channel kits and color swatches on product packaging. Verify actual appearance and compatibility with a test area before installing. Blend pointing mortar with different control numbers. No claims for color shade variations will be honored.

Note: Color availability of all Pointing Mortars are subject to change.

1. What is the Masonry Veneer Installation System (MVIS™)?

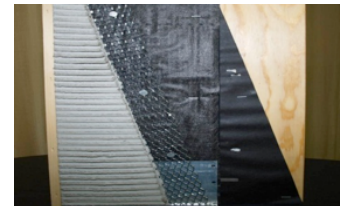
MVIS™ was designed to create a better way to install thin adhered masonry veneer. With over 65 years of setting industry standards with waterproofing and polymer fortified adhesive cement technology, LATICRETE offers an installation system that provides a permanent solution to adhering natural, manufactured stone, thin brick and other products to vertical and horizontal substrates.

MVIS, when used per written instructions, provides the owner with a warranted solution for the installation of thin brick, manufactured stone, natural stone, and other thin veneer products.

2. What's wrong with the methods traditionally used to install thin adhered veneers?

While there have been many examples of success using the traditional masonry installation method, the materials used – felt paper, metal lath and scratch coats made of Type S/N masonry mortars are not engineered as part of a complete wall system. Some limitations of this method include:

- Limited installation warranties
- Absence of third party testing to substantiate performance levels
- Water-resistant barriers are compromised, causing water intrusion into the system
- Low bond strength adhesion values of traditional mortars result in delamination
- Lack of freeze/thaw durability
- Field mixed products lead to inconsistencies in mix ratios
- Field labor inconsistencies lead to variable substrate quality
- Substrate is seldom properly wet cured as stipulated prescriptively in the model building codes, resulting in shrinking and cracking



Example of Traditional System



Water Intrusion



Delamination of Stone



Adhesion Failures

3. What advantages does the MVIS offer?

- 15-year labor and materials warranty over exterior steel or wood-framed construction
- 25-year labor and materials warranty over exterior masonry and concrete, and interior wood and steel-framed construction
- Superior adhesive mortars with six to ten times the bond strength of traditional mortars
- Fully monolithic and load-bearing waterproof membrane
- Faster and more economical system using factory blended and bagged, ready to use products
- Mortars provide non-sag – easily adjustable qualities producing easier installation

* See Data Sheets 2104 and 0247 for complete warranty information.



4. Is the MVIS™ more expensive than traditional systems?

No. While the MVIS™ individual components typically cost more per SKU than conventional counterparts, the systems are not comparable of the total installation cost. In most cases, the installed cost is less with the MVIS. **Scan the QR code provided to compare the installed cost of your project.**



Scan for
MVIS Cost Savings
Calculator

- Installation of cement backer board is faster and less expensive than a lath with scratch and brown coat method, saving both labor and material costs
- Traditional systems often use much more product due to waste and inconsistent jobsite mixing
- MVIS mortars offer faster installation of adhered veneer stones and thin bricks
- The cost associated with non-warranted traditional products is often not calculated; LATICRETE offers a fully warranted system, including the cost of materials and labor

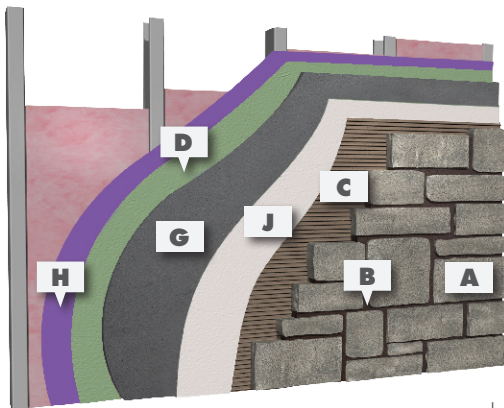
5. Can anyone install the MVIS?

Yes. Any trade can install the MVIS. This includes, but is not limited to:

- Brick and stone masons
- Tile installers

Any of these installers can offer the appropriate LATICRETE Warranty.

Exterior Wall – MVIS™ Installation

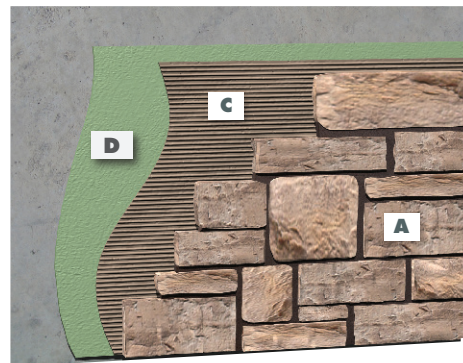


Framed wall with exterior rated sheathing –
Cement backer board substrate



Add lath and Premium Mortar Bed design option for 15 year warranty.

Exterior Wall – MVIS Installation



Concrete or concrete block wall –
direct adhered with fluid applied air
and water barrier/waterproofing



Key

A Adhered Masonry Veneer	D LATICRETE® Air Barrier or by other	G Cement backer board (exterior grade)
B MVIS™ Pointing Mortar	E MVIS Premium Mortar Bed	H Exterior rated sheathing
C MVIS Veneer Mortar	F Metal Lath, 3.4# galvanized diamond wire lath	I Concrete or masonry
		J MVIS WCI

¹United States Patent No. 6,881,768 (and other Patents)

6. What MVIS™ adhesive mortar should I choose for my project?

The MVIS™ product line features four adhesive mortar options, designed specifically for the type of adhered veneer to be installed.

MVIS Veneer Mortar[^]

Patented, versatile polymer fortified mortar designed for the installation of adhered masonry veneers, stone and thin brick featuring superior non-sag capabilities and adjustability

MVIS Lightweight Mortar

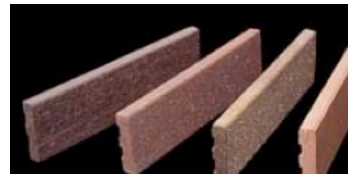
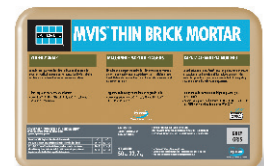
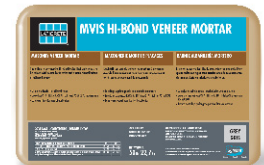
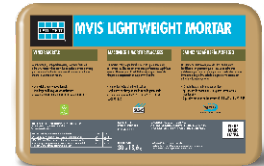
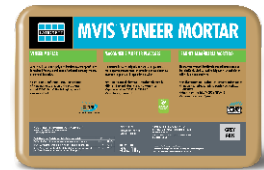
Perfect for stack stone application as mortar can be dyed to a selected color

MVIS Hi-Bond Veneer Mortar

The ultimate, polymer fortified, adhesive mortar designed for heavier natural stones or veneers

MVIS Thin Brick Mortar

An economical, multi-use, polymer fortified mortar producing maximum coverage for thin brick installations



7. How do I qualify for the Warranty on my project?

LATICRETE does not offer certification for installers. Instead, to qualify for the MVIS Warranty, the installer must follow the instructions for a complete system. Components of a complete warranted system include, but are not limited to:

- Proper installation and joint preparation of the substrate, including cement backer board over exterior sheathing for framed construction
- Proper flashing of required areas, including penetrations
- 100% coverage using MVIS mortars as per code for exterior veneer
- Use of all MVIS products as stated in warranty document and keep proof of purchases

8. Where can I purchase the MVIS products?

The MVIS products are sold through contractor supply channels of distribution around the country. See laticrete.com/wheretobuy for a distributor near you.

Please contact your local MVIS representative for additional information.

[^]United States Patent No. 6,881,768 (and other Patents)

9. Which thin veneer manufacturers recommend or require the MVIS™?

LATICRETE has many partners that recommend and support MVIS™ for the installation of their products. MVIS Partners value and understand project success depends on quality veneers, installation materials and methods.



10. What architectural resources are available for specifying and recommending MVIS?

LATICRETE offers full and short form architectural specification guidelines plus an entire detail library at laticrete.com/mvisag. The specifications and details outline recommended installation procedures (flashing and tie-ins) for many typical jobs. Please contact your local distributor or an MVIS representative for additional information.

Many LATICRETE Partners also offer installation guidelines specific to their products.

RESOURCES

[Product Pages \(laticrete.com/MVIS\)](http://laticrete.com/MVIS)

View all of the Adhered Façade and Wall Finishes products from LATICRETE.

[Video Tutorials \(youtube.com/laticrete\)](https://www.youtube.com/laticrete)

Learn how to use and install Adhered Façade and Wall Finishes products on our YouTube channel

[Online Training \(laticreteuniversity.com\)](http://laticreteuniversity.com)

Watch online tutorials, take a test and receive a certificate of completion through our LATICRETE University e-learning program.

[MVIS Cost Savings Calculator \(laticrete.com/mviscalculator\)](http://laticrete.com/mviscalculator)

Utilize our online calculator to determine your estimated savings when using the MVIS compared to a traditional lath and scratch installation.





Microban antimicrobial technology protects the treated article against mold and mildew deterioration. Antimicrobial technology is not designed to replace normal cleaning practices or protect users.



LATICRETE International, Inc. ■ One LATICRETE Park North, Bethany, CT 06524-3423 USA ■ 1.800.243.4788 ■ +1.203.393.0010 ■ www.laticrete.com

DS-005.2-0622 ©2022 LATICRETE International, Inc. All trademarks shown are the intellectual properties of their respective owners.