

Fresque

Vinyl • Engineered Luxury Vinyl

Some products in this collection are discontinued.

Benefits

Family friendly (including pet)

100% Waterproof
Ultra-durable wear layer with ceramic bead technology
Easy to clean
Stain resistant, including pet stains

Safe and healthy

Antimicrobial protective treatment to inhibit the growth of mold and mildew.
Phthalates-Free products meaning that they will not affect your quality of life
FloorScore® Certified for compliance with rigorous indoor air quality requirements
E1 Certified meaning that the product meets the European standard for indoor air quality
Made of virgin PVC (no recycled content) ensuring a uniform composition that doesn't contain any harmful substances.

Performant and durable construction

Performs in extreme temperatures (-4 to 122 °F / -20 to 50 °C)
Commercial abrasion resistance
BLC Certified ® - Ensures that the floor covering you're buying surpasses industry quality standards.
High-density rigid core vinyl planks (SPC)
Very sturdy - can withstand heavy furniture such as kitchen cabinets and islands

Easy maintenance

100% Waterproof
Antimicrobial, anti-mold and anti-fungal
Easy to clean
Stain resistant, including pet stains

Easy and versatile Installation

Floating installation
2 in 1 - comes with an attached underlayment
Can be installed in 3-season cottages (-4 to 122 °F / -20 to 50 °C)
No acclimation required
Compatible with embedded radiant heating
Can be installed on all floor levels
No telegraphing, even when installed over hard surface flooring
Minimal floor preparation
Installations of up to 4225 sq. ft. (65 linear ft.) in an open space without transition moldings
Matching moldings available

Quiet and comfortable

Foam backing for greater temperature and sound insulation
High soundproofing ratings (IIC/STC)

Notable look

Matte finish

Best-in-class Warranty

30 Days No Questions Asked Replacement

Quickship

Stock product for faster delivery

Fresque

Vinyl • Engineered Luxury Vinyl

Product Specifications

| | |
|-----------------------------|---|
| Market Segments | Hospitality, Pro, Residential, Workspace |
| Sub Category | SPC |
| Collection | Fresque |
| Construction | Engineered Luxury Vinyl |
| Format | Tile |
| Abrasion Resistance | General Commercial Use |
| Material | Virgin PVC |
| Core Material | 70% Calcium Carbonate / 30% Virgin PVC |
| Width | 12" (304.8 mm) |
| Total Thickness | 0.197" (5 mm) |
| Wear Layer Thickness | 0.0220" (0.5500 mm) |
| Core Thickness | 0.1570" (4.0000 mm) |
| Backing | Ixpe Foam |
| Edges | 4-Sided Micro Bevel |
| Locking System | Välinge 5Gi |
| Backing Thickness | 0.0394" (1.0000 mm) |
| Finish | Travertine |
| Top Surface | UV-Cured Polyurethane & Ceramic Bead Technology |
| Gloss | Matte |
| Pattern Repeat | 6 |
| IIC | 71 |
| STC | 71 |
| Design | Ceramic |
| Formaldehyde | E1 |
| Vinyl Thickness | n/a |
| Length | 24" (609.6 mm) |
| Certifications | Virgin PVC, QuickShip, FloorScore, E1 Certified, Phthalates-Free, BLC Certification |
| Installation Methods | Floating, Compatible with embedded radiant heating |
| | 🔗 Rigid Engineered Luxury Vinyl Installation Guide - Välinge 5Gi |
| | 🔗 Rigid Engineered Luxury Vinyl Installation Video - Välinge 5Gi Locking System |

Warranties

- [🔗 Rigid Engineered Luxury Vinyl Warranty Guide](#)
- [🔗 Rigid Engineered Luxury Vinyl Maintenance Guide](#)

| | |
|------------------------|--|
| Residential use | No Questions Asked Replacement <i>30 days</i> Waterproof <i>Lifetime</i> Fade <i>Lifetime</i> Stain Resistance <i>Lifetime</i> Manufacturing Defects <i>Lifetime</i> Wear <i>Lifetime</i> Petproof <i>Lifetime</i> |
|------------------------|--|

| | |
|-----------------------|---|
| Commercial use | Fade <i>15 Years</i> Wear <i>15 Years</i> Manufacturing Defects <i>15 Years</i> Stain Resistance <i>15 Years</i> Waterproof <i>Lifetime</i> Petproof <i>Lifetime</i> |
|-----------------------|---|

Fresque

Vinyl • Engineered Luxury Vinyl

Packaging information

| | |
|--------------------------|-------------------------------|
| Units Per Box | 10 |
| Boxes Per Pallet | 66 |
| Box Weight | 33.20 pounds (15059.25 grams) |
| Square Meters Per Box | 1.86 |
| Square Meters Per Pallet | 122.63 |
| Square Feet Per Box | 20 |
| Square Feet Per Pallet | 1320 |

Moldings



Flushmount Stair Nose - Round

Matching
94.488" X .984" X 2.834"
(2400 mm X 25 mm X 72 mm)



Reducer

Matching
94.488" X 0.276" X 1.771"
(2400 mm X 7 mm X 45 mm)



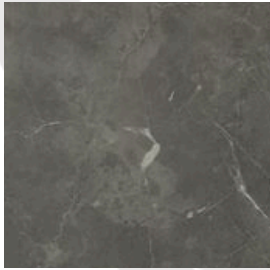
T-Molding

Matching
94.488" X 0.276" X 1.771"
(2400 mm X 7 mm X 45 mm)

Fresque

Vinyl • Engineered Luxury Vinyl

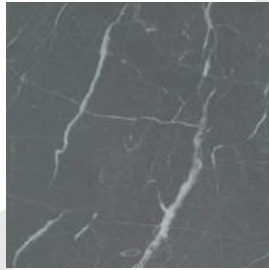
Styles offered



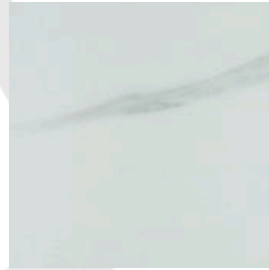
#2210 (Tile)
Chagall
Travertine
Limited Stock



#2211 (Tile)
Klee
Travertine



#2212 (Tile)
Klimt
Travertine
Limited Stock



#2213 (Tile)
Matisse
Travertine



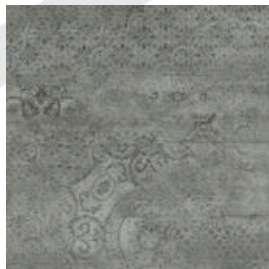
#2214 (Tile)
Miro
Travertine



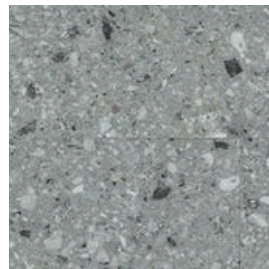
#2215 (Tile)
Monet
Travertine



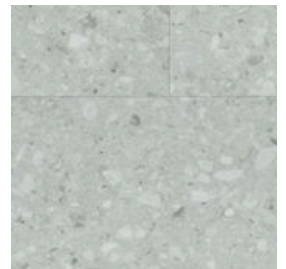
#2216 (Tile)
Munch
Travertine
Limited Stock



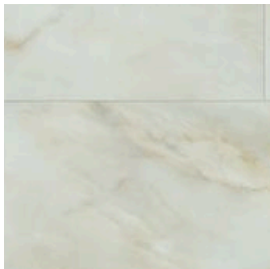
#2217 (Tile)
Warhol
Travertine



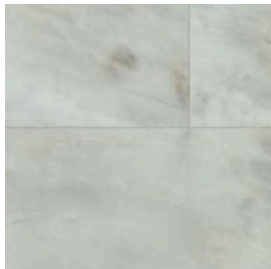
#2218 (Tile)
Kahlo
Travertine



#2219 (Tile)
Kandinsky
Travertine



#2220 (Tile)
Pissaro
Travertine



#2221 (Tile)
Van Gogh
Travertine



#2222 (Tile)
Degas
Travertine



#2223 (Tile)
Rothko
Travertine



#2224 (Tile)
Tamayo
Travertine