

# Degas 2222

## Engineered Luxury Vinyl • Fresque

### Benefits

#### Family friendly (including pet)

100% Waterproof  
Ultra-durable wear layer with ceramic bead technology  
Easy to clean  
Stain resistant, including pet stains

#### Safe and healthy

Antimicrobial protective treatment to inhibit the growth of mold and mildew.  
Phthalates-Free products meaning that they will not affect your quality of life  
FloorScore® Certified for compliance with rigorous indoor air quality requirements  
E1 Certified meaning that the product meets the European standard for indoor air quality  
Made of virgin PVC (no recycled content) ensuring a uniform composition that doesn't contain any harmful substances.

#### Performant and durable construction

High-density rigid core vinyl planks (SPC)  
Very sturdy - can withstand heavy furniture such as kitchen cabinets and islands  
Performs in extreme temperatures (-4 to 122 °F / -20 to 50 °C)  
Commercial abrasion resistance  
BLC Certified ® - Ensures that the floor covering you're buying surpasses industry quality standards.

#### Easy maintenance

100% Waterproof  
Antimicrobial, anti-mold and anti-fungal  
Easy to clean  
Stain resistant, including pet stains

#### Easy and versatile Installation

Floating installation  
2 in 1 - comes with an attached underlayment  
Can be installed in 3-season cottages (-4 to 122 °F / -20 to 50 °C)  
No acclimation required  
Compatible with embedded radiant heating  
Can be installed on all floor levels  
No telegraphing, even when installed over hard surface flooring  
Minimal floor preparation  
Installations of up to 4225 sq. ft. (65 linear ft.) in an open space without transition moldings  
Matching moldings available

#### Quiet and comfortable

Foam backing for greater temperature and sound insulation  
High soundproofing ratings (IIC/STC)

#### Notable look

Matte finish

#### Best-in-class Warranty

30 Days No Questions Asked Replacement

#### Quickship

Stock product for faster delivery

# Degas 2222

## Engineered Luxury Vinyl • Fresque

### Product Specifications

<b>Market Segments</b>	Hospitality, Pro, Residential, Workspace
<b>Sub Category</b>	SPC
<b>Collection</b>	Fresque
<b>Style Name</b>	Degas
<b>Style Number</b>	2222
<b>Construction</b>	Engineered Luxury Vinyl
<b>Format</b>	Tile
<b>Abrasion Resistance</b>	General Commercial Use
<b>Material</b>	Virgin PVC
<b>Core Material</b>	70% Calcium Carbonate / 30% Virgin PVC
<b>Width</b>	12" (304.8 mm)
<b>Total Thickness</b>	0.197" (5 mm)
<b>Wear Layer Thickness</b>	0.0220" (0.5500 mm)
<b>Core Thickness</b>	0.1570" (4.0000 mm)
<b>Backing</b>	Ixpe Foam
<b>Edges</b>	4-Sided Micro Bevel
<b>Locking System</b>	Välinge 5Gi
<b>Backing Thickness</b>	0.0394" (1.0000 mm)
<b>Finish</b>	Travertine
<b>Top Surface</b>	UV-Cured Polyurethane & Ceramic Bead Technology
<b>Gloss</b>	High
<b>Pattern Repeat</b>	6
<b>IIC</b>	71
<b>STC</b>	71
<b>Design</b>	Concrete
<b>Formaldehyde</b>	E1
<b>Vinyl Thickness</b>	n/a
<b>Length</b>	24" (609.6 mm)
<b>Certifications</b>	FloorScore, E1 Certified, QuickShip, Phthalates-Free, BLC Certification, Virgin PVC
<b>Installation Methods</b>	Floating, Compatible with embedded radiant heating
	<a href="#">Rigid Engineered Luxury Vinyl Installation Guide - Välinge 5Gi</a>
	<a href="#">Rigid Engineered Luxury Vinyl Installation Video - Välinge 5Gi Locking System</a>



### Warranties

- [Rigid Engineered Luxury Vinyl Warranty Guide](#)
- [Rigid Engineered Luxury Vinyl Maintenance Guide](#)

<b>Residential use</b>	No Questions Asked Replacement <i>30 days</i> Waterproof <i>Lifetime</i> Fade <i>Lifetime</i> Stain Resistance <i>Lifetime</i> Manufacturing Defects <i>Lifetime</i> Wear <i>Lifetime</i> Petproof <i>Lifetime</i>
<b>Commercial use</b>	Fade <i>15 Years</i> Wear <i>15 Years</i> Manufacturing Defects <i>15 Years</i> Stain Resistance <i>15 Years</i> Waterproof <i>Lifetime</i> Petproof <i>Lifetime</i>

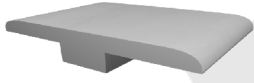
# Degas 2222

## Engineered Luxury Vinyl • Fresque

### Packaging information

<b>Units Per Box</b>	10
<b>Boxes Per Pallet</b>	66
<b>Box Weight</b>	33.20 pounds (15059.25 grams)
<b>Square Meters Per Box</b>	1.86
<b>Square Meters Per Pallet</b>	122.63
<b>Square Feet Per Box</b>	20
<b>Square Feet Per Pallet</b>	1320

### Moldings



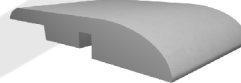
#### **T-Molding**

Matching  
94.488" X 0.276" X 1.771"  
(2400 mm X 7 mm X 45 mm)



#### **Flushmount Stair Nose - Round**

Matching  
94.488" X .984" X 2.834"  
(2400 mm X 25 mm X 72 mm)



#### **Reducer**

Matching  
94.488" X 0.276" X 1.771"  
(2400 mm X 7 mm X 45 mm)