

Safe Sense

TACTILE WALKING SURFACE INDICATORS

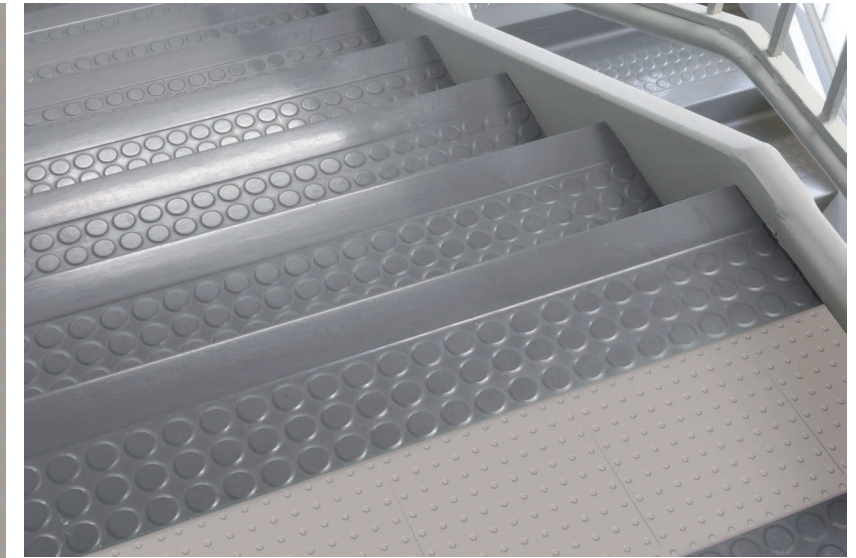
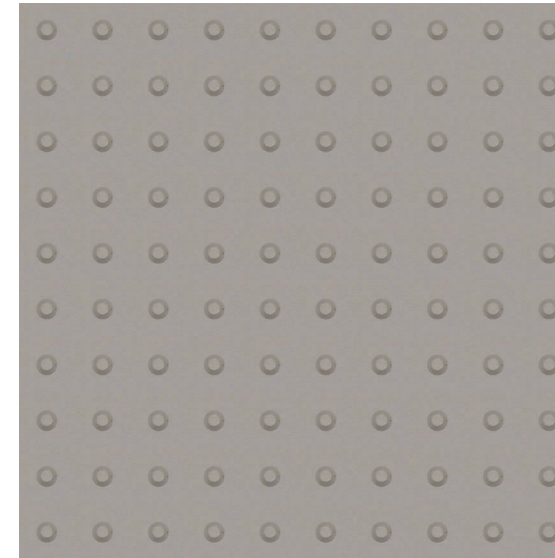
People
friendly spaces



Safe Sense™ Tactile Walking Surface Indicators

When the challenge involves balancing compliant materials with good design, choose the Safe Sense Tactile Walking Surface Indicators (TWSI) system from Tarkett. Safe Sense affords you TWSI code compliant solutions in all 98 solid colors available in the Tarkett rubber tile and stair tread lines. The 24" x 24" TWSI tiles are interchangeable with all Tarkett rubber tile products. Tactile Warning Tiles and Tactile Guide Tiles color coordinate with Tarkett rubber tiles, stair treads, wall base finishing borders, mouldings and transitions, as well as all Tarkett Specialty Solutions. Tarkett's TWSI system can also be incorporated with other flooring, including carpeting, ceramic, hard surface and more. Use our comprehensive flooring system – the world's most integrated – to make sure every element coordinates across rooms, hallways and buildings.

TACTILE WARNING TILE (ATTENTION TILE)



TW1

Tactile Warning Tiles, or Attention Tiles, indicate special hazards for the blind or visually impaired. They are used to indicate changes in level in areas such as steps, ramps and escalators. These tiles deliver a texture that can be detected with canes or through shoe soles. People with limited sight might also detect the visual contrast. All Tactile Warning Tiles meet the specific size and dimension standards as required by ISO/FDIS 23599.

TACTILE GUIDE TILE (GUIDE TILE)



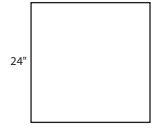
TG1

Tactile Guide Tiles, or Guide Tiles, are designed to aid the blind and visually impaired to traverse open spaces by indicating primary routes of travel. They too are designed to be used by the blind while using a long white cane or by those with residual vision alerted by the visual contrast of the Tactile Guide Tile to the surrounding floor. All Tactile Guide Tiles meet the specific size and dimension standards as required by ISO/FDIS 23599.

Tactile Guide and Tactile Warning tiles are available in all 98 solid colors standard in the Tarkett rubber tile and stair tread lines.

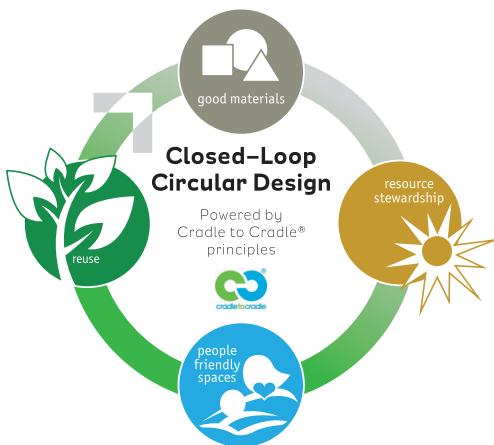
Safe Sense™ Tactile Walking Surface Indicators

Technical Data	Standards	
TWSI	ISO/FDIS 23599	Assistive Products for Blind and Vision-Impaired
	CSA B6512	Canadian Standards Association
Type of Floor Covering	ASTM F1344	Rubber Floor Tile
Classification	ASTM F1344	Class I-A, I-B
Total Thickness	ASTM F386	7.2 mm (.28")
Base Thickness	ASTM F386	3.2 mm (1/8")
Static Load Limit	ASTM F 970	Passes
Radiant Heating	ASTM E648	≤ 85°F
Electrostatic Propensity	ASTM E662	< 2 kV
Resistance to Heat	ASTM F1514	$\Delta \Sigma \leq 8.0$
Hardness	ASTM D2240	Min 85 Shore A
Dimensional Stability	ASTM F2199	≤ 0.15%
Abrasion Resistance	ASTM D3389	< 1g loss after 1,000 cycles
Slip Resistance	ASTM D2047	SCOF ≥ 0.8
Flame Resistance	ASTM E648	Class 1
Smoke Density	ASTM E662	< 450
Chemical Resistance	ASTM F925	Good
Colors		98 Standard; custom available
Product Code		Tactile Warning Tile: TW1 Tactile Guide Tile: TG1
Tile	Size Pieces per carton Square feet per carton Weight	24" x 24" (61 cm x 61 cm) 4 Tiles 16 sq. ft. (1.5 m ²) 28 lbs. (12.7 kg)



Please visit tarkettna.com for the most updated specifications, installation, cleaning and maintenance instructions.

How to Order: Product Code – Color Number (Example: TW1 - 40)



GOOD MATERIALS

- 46% of raw materials do not contribute to resource scarcity
- All ingredients assessed according to C2C principles

RESOURCE STEWARDSHIP

- Committed to 3% yearly reduction goals in water, waste and energy and 20% in greenhouse gas emissions by 2020.

PEOPLE FRIENDLY SPACES

- FloorScore® certified meeting CA01350
- Low-emitting adhesives
- C2C v.3 certified bronze

REUSE:

- ReStart® program reclaims samples, installation waste and flooring at end of use.

Tarkett North America

30000 Aurora Rd
Solon, OH 44139
800.899.8916
tarkettna.com

42399400048