

Recoil Fitness Flooring

Manufacturer

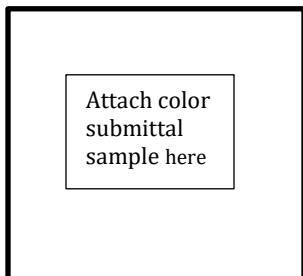
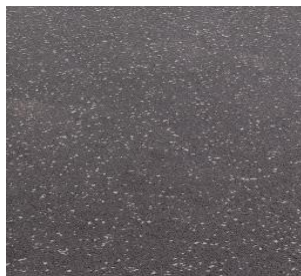
Roppe Corporation
1602 N. Union Street
P.O. Box 1158
Fostoria, Ohio USA 44830-1158 Website -
www.roppe.com
t: (419) 435.8546 tf: (800) 537.9527
f: (419) 435.1056
e-mail: sales@roppe.com

Product Description

Recoil Fitness Rubber Flooring combines the durability of vulcanized post-consumer recycled tire material from commercial and automobile tire compositions mixed with vulcanized post-industrial recycled and colored rubber EPDM (Ethylene-Propylene Diene Monomer) chips which are then encapsulated in a premium urethane binder creating very tough and durable flooring. Designed for commercial, residential, industrial and fitness applications.

Features

Non-Porous Material PVC Free
Easy to Maintain Shock-Absorbing
Extremely Durable
Made from Recycled Materials
Qualifies for LEED® Credits
Noise-Reducing Material
Excellent Chemical Resistance
Excellent Slip Resistance



Square Edge Tiles

Nominal Dimensions: 36" x 36"
Gauges: 5/32", 1/4", 3/8", 1/2"
Area Per Tile: 9 sq. ft.

Interlocking Tiles

Nominal Dimensions: 34 1/4" x 34 1/4"
Gauges: 5/32", 1/4", 3/8", 1/2"
Area Per Tile: 8.2 sq. ft.

Rolls

Nominal Dimensions: 48" x 24 3/4' - 49 1/2'
Gauges: 5/32", 1/4", 3/8", 1/2"
Area Per Tile: 99 - 198 sq. ft. rolls

Available in 12 standard color options.

*Custom colors, sizes and thicknesses available upon request

Technical Data

ASTM F3041 - Bonded Crumb Rubber: Type I & II, Class A,B,C & D
ASTMD2047 - Coefficient of Friction: > 0.8 Acclimation
ASTM E648 (NFPA 253) - Critical Radiant Flux: Unclassified, 0.10 W/cm2
ASTM D3389 - Abrasion Resistance: Passes
ASTM F137 - Flexibility: Passes
ASTM F970 - Static Load Limit: Passes, 250 PSI
ASTM F2199 - Dimensional Stability: Passes
ASTM F1514 - Heat Stability of Color: Passes
ASTM F925 - Short Term Chem. Exposure: Passes (see ASTM F3041 Test)
ASTM E492 Impact Sound Transmission: 57 IIC*
Time: 48 Hours
Storage & Acclimation Temperature: 65 ° - 85 ° F
* 6" Concrete, Drop Ceiling Assembly, 3/8" Material Only

Approved Adhesive*

MS-700 Modified Silane
EW-710 Epoxy Wet-Set Adhesive
U-705 Urethane Wet-Set Adhesive

Installation*

All materials are to be delivered to the installation location within 48 hours of installation in its original packaging with labels intact. Store products in a dry area protected from the weather with temperatures maintained between 65° F (19°C) and 85° F (30°C). DO NOT stack pallets. Remove all plastic wrapping and strapping from the pallets and unbox all material in the installation area at least 48 hours prior to installation.

Maintenance*

Do not scrub, buff or mop the flooring for at least 72 hours after installation to allow the adhesive to properly cure. The flooring must be properly cleaned before it is released for normal use. Dry vacuum the floor thoroughly and wet mop floor if needed.

Technical Document Support

Additional product resources and technical documents are available online at www.roppe.com. For additional technical support, send an e-mail to solutions@technical.com

Warranty Roppe Provides a 3 year Limited Warranty. For additional information, see associated Warranty documents.

***For complete adhesive, installation & maintenance instructions, visit www.roppe.com**