

## Elegance meets Functionality

Advantage® ONE Tactile Walking Surface Indicators (TWSI) have been designed for all interior accessibility solutions. Advantage® ONE Tactile indicators are machined from a solid piece of 316L Marine Grade Stainless Steel, and proves to be an aesthetically pleasing, strong, and durable material.

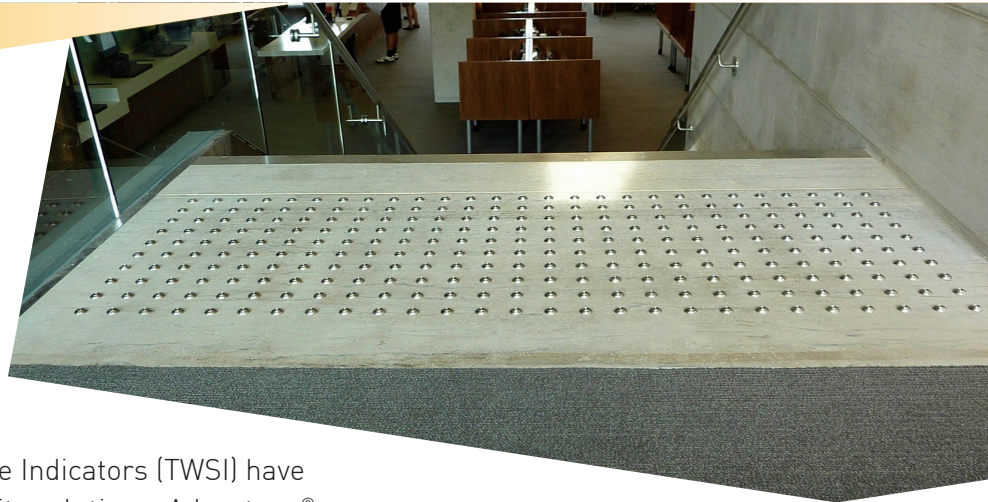
Advantage® ONE incorporates an integral texture in the stainless steel for permanent slip resistance. Our products have undergone a rigorous series of tests to ensure that they meet and exceed guidelines developed by the AODA, CSA, ISO, and provincial and national building codes. Advantage® ONE TWSI products offer the lowest lifecycle cost, and eliminates long term safety concerns and accessibility limitations.

Tactile Walking Surface Indicators (TWSI) products for the following and many more applications:

- Revolving Door Approaches
- Wheelchair Ramps
- Parking Areas
- Top of Stair Landings
- Turnstile and Gate Access
- Escalator Approaches
- Transit Platforms
- Multi-Modal Transit Stations- Stair Landings

### COMPLIANCE

Kinesik Engineered Products Incorporated is in full compliance with Canadian Accessibility Codes. The full product range of Kinesik tactile walking surface indicators meet the most recent AODA, CSA, ISO, provincial and national building codes. Kinesik Engineered Products Incorporated is your one stop source for all tactile systems for internal and external applications. Only Kinesik provides a complete range of products designed for safety, convenience and code compliance.



### PRODUCT FEATURES

- 316L, Marine grade stainless steel
- Innovative adhesive capture design
- Optimum anti-slip design
- Resistant to heavy traffic abuse and maintenance machinery
- 5 year manufacturer's warranty

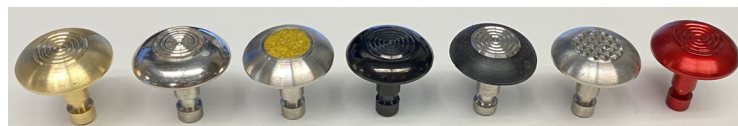
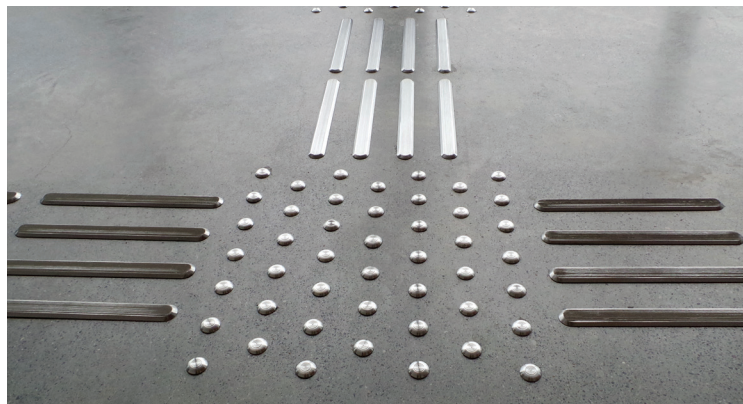
Domes and Bars come in the following styles:

#### DOMES

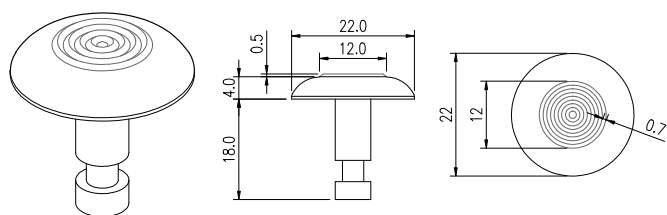
- Concentric Rings Pattern
- Crosshatch Pattern
- Carborundum - Non-Slip

#### BARS

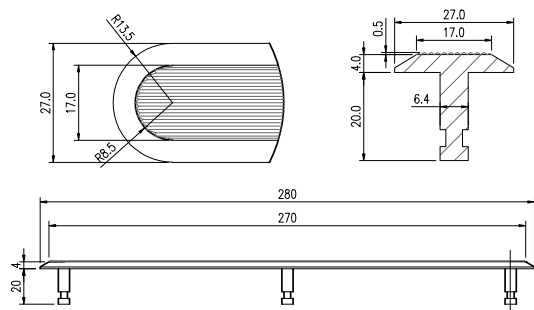
- Crosshatch Pattern
- Carborundum - Non-Slip
- Linear Grooves



**Tactile Walking Surface Indicator (TWSI) Domes**



**Tactile Walking Surface Indicator (TWSI) Wayfinding Bars**



#### ADVANTAGE ONE - INDIVIDUAL BARS

BAR SIZE	PRODUCT CODE	CENTRE BAR PATTERN	MATERIAL
11"x1" (280x20mm)	ADV-B-3281-N	Linear Grooves	Stainless Steel 316L
11"x1" (280x20mm)	ADV-B-2281-N	Cross Hatch	Stainless Steel 316L
11"x1" (280x20mm)	ADV-B-5281-N	Black Carborundum	Stainless Steel 316L

#### PROFESSIONAL ASSOCIATIONS

Kinesik is proud to be a member of the following organisations



#### SPECIFICATIONS

Advantage® ONE (TWSI) meets the following ASTM specifications: A182, A193, A276, A313, A314, A320, A479, A493 and A580.

Test	Description	Requirements
ASTM C 1028-96	Static Coefficient of Friction	≥ 0.8 wet/dry
ASTM D 543-95	Chemical Resistance	No effect
ASTM D 2486-00	Abrasive Wear Gardener Tester	No wear
ASTM C 501-84	Abrasive Wear Taber Tester	No wear
AASHTO HB-17	Wheel Load Tests	No effect
ASTM B 117-03	Salt Spray (300 hrs)	No effect

#### APPLICATIONS

**Tactile Attention Indicator Truncated Domes**

- An unprotected drop off edge, such as a transit platform where the change in elevation is greater than 250mm or the slope is steeper than in a ratio of 1:3 (33%).
- The unprotected edges of a reflecting pool.

**Tactile Direction Indicator Wayfinding Bars**

- Located in large open floor in large open floor areas, such as shopping malls or transportation terminals, to facilitate wayfinding by indicating the primary routes of travel.
- The indicated routes should lead from the entrance to major destinations, such as an information kiosk, registration desk, stairway, elevator, escalators, or to store or service doors.

#### ADVANTAGE ONE - INDIVIDUAL DOMES

DOMES DIA.	PRODUCT CODE	CENTRE DOME PATTERN	MATERIAL
22	ADV-D-1281-N	Concentric Rings	Stainless Steel 316L
23	ADV-D-2281-N	Cross Hatch	Stainless Steel 316L
23	ADV-D-5281-N	Black Carborundum	Stainless Steel 316L
23	ADV-D-7281-N	Yellow Carborundum	Stainless Steel 316L
22	ADV-D-1281-BK PVD	Concentric Rings	SS PVD Coated 316L
22	ADV-D-1283-N	Concentric Rings	Brass
22	ADV-D-1282-N	Concentric Rings	Aluminum - Clear
22	ADV-D-1282-BK	Concentric Rings	Aluminum - Black
22	ADV-D-1282-RD	Concentric Rings	Aluminum - Red
22	ADV-D-1285-BK	Concentric Rings	SS Black Poly Ring 316L
22	ADV-D-1285-YW	Concentric Rings	SS Yellow Poly Ring 316L