

Modulo TMOD

Carpet Tiles • Mainstreet Tiles - InnoFibe

Benefits

Safe and healthy

Green Label Plus certified ensuring that you are purchasing the very lowest VOC-emitting products on the market
Improves indoor air quality by trapping particles, removing them from the breathing zone and reducing their circulation
Slip Resistant
Cushion falls and reduces the risk of injury
Soft to the touch but also for the body thanks to its shock absorption capacity which helps limit damage to muscles and articulations

Environmentally-Friendly

Made with solution-dyed fibers a process that reduces significantly water consumption

Best-in-class Warranty

30 Days No Questions Asked Replacement

Limitless designabilities

One of the most versatile floor coverings because you get to choose from a wide range of colors and textures
Easy to mix and match colors and designs for a personalized look

Warm, quiet and comfortable

Without a doubt, the most comfortable flooring
Greatest soundproofing and insulating properties
Reduces heat loss
Soft and warm to the touch

Quickship

Stock product for faster delivery

Stain resistant & easy to clean

Made with solution-dyed polypropylene, a fiber inherently resistant to stain and fade
Stainproof for life meaning you're buying a carpet that offers lasting stain resistance

High performance

Made with our InnoFibe solution-dyed polypropylene fiber for excellent stain and fade resistance
Part of our Mainstreet InnoFibe product offering, ideal for light commercial applications
Made with EnduroBac backing which provides strong and non-fraying edge and offers durability and exceptional dimensional stability

Easy to install and repair

Easy installation with our 301 Carpet Tiles Adhesive
Modular floor covering for fast and easy repair when needed

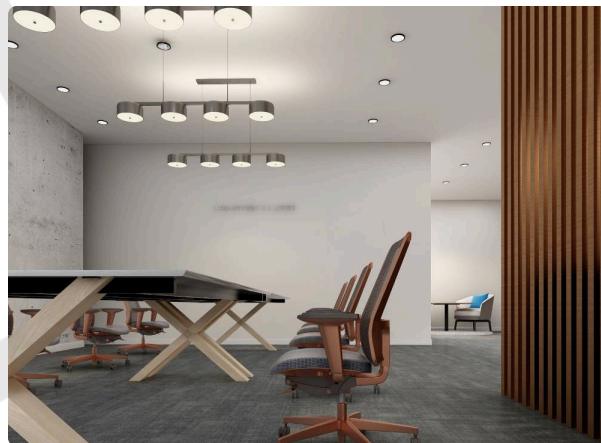
Modulo TMOD

Carpet Tiles • Mainstreet Tiles - InnoFibe

Product Specifications

Market Segments	Builder, Hospitality, Pro, Property Management, Residential, Senior Living, Workspace
Brand	InnoFibe Tiles
Collection	Mainstreet Tiles - InnoFibe
Style Name	Modulo
Style Number	TMOD
Colors	6
Construction	Multi-Level Loop
Format	Tile
Fiber Type	100% Polypropylene
Abrasion Resistance	Residential and Light Commercial Use
Dye Method	Solution Dyed
Pile Weight	18.00 oz./y ² (610.2 g/m ²)
Pile Height	9/64 in (3.5 mm)
Total Height	7/32 in (5.5 mm)
Backing	Endurobac
Stitch Count	11/in (42/10 cm)
Gauge	1/12 in (2.11 mm)
Density Factor	3711
Static Control	n/a
Flammability	n/a
Flooring Radiant Panel	n/a
Tarr	2
Indoor Air Quality	GLP 101088
Dimension	19.7 x 19.7" (50 X 50 cm)
Color Fastness	n/a
Certifications	Green Label Plus, QuickShip, Stainproof for life
Installation Methods	Brick, Ashlar, Monolithic, Quarter Turn

[🔗 Carpet Tiles Installation Guide](#)



Color Names & Numbers

#01	Crushed Rocks	#02	Denim Jacket
#03	Sparrow Feather	#04	Concrete Lane
#05	Wandering Road	#06	Stone Fortress

Warranties

[🔗 Carpet Tiles Warranty Guide](#)

[🔗 Carpet Tiles Care & Maintenance Guide](#)

Residential use

Edge Ravelling *Lifetime*
 Delamination Resistance
Lifetime
 Dimensional Stability *Lifetime*
 Anti-Zippering *Lifetime*
 No Questions Asked
 Replacement *30 days*
 Stain Resistance *Lifetime*
 Static Control *Lifetime*
 Wear Resistance *Lifetime*

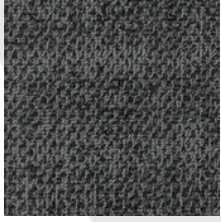
Light commercial use

Wear Resistance *7 Years*
 Delamination Resistance *7 Years*
 Anti-Zippering *7 Years*
 Dimensional Stability *7 Years*
 Stain Resistance *7 Years*
 Static Control *7 Years*
 Edge Ravelling *7 Years*

Modulo TMOD

Carpet Tiles • Mainstreet Tiles - InnoFibe

Colors



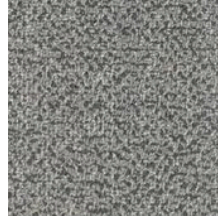
#01
Crushed Rocks



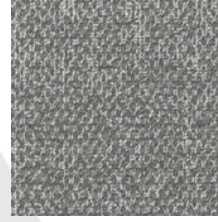
#02
Denim Jacket



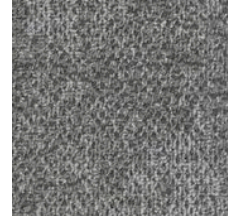
#03
Sparrow Feather



#04
Concrete Lane



#05
Wandering Road



#06
Stone Fortress

Packaging information

Units Per Box	20
Boxes Per Pallet	32
Box Weight	57.35 pounds (26012.68 grams)
Square Yards Per Box	5.98
Square Meters Per Box	5.00
Square Yards Per Pallet	191.36
Square Meters Per Pallet	159.98

Modulo TMOD

Carpet Tiles • Mainstreet Tiles - InnoFibe

Accessories



301 Carpet Tiles Adhesive - 4 U.S. Gallons

4 Gallons (15.14 Litres)

1/16" x 1/32" x 1/32" U-notch Trowel

Porous Coverage

680 - 760 sq.ft. / 4 Gallons (63 - 71 m² / 15 L)

Non-Porous Coverage

680 - 760 sq.ft. / 4 Gallons (63 - 71 m² / 15 L)

- [🔗 Specifications - 301 Pressure Sensitive Carpet Tile Adhesive](#)
- [🔗 Label - 301 Pressure Sensitive Carpet Tile Adhesive](#)
- [🔗 SDS - 301 Pressure Sensitive Carpet Tile Adhesive](#)