

# Echo TECH

## Carpet Tiles • Mainstreet Tiles - InnoFibe

### Benefits

#### Safe and healthy

Green Label Plus certified ensuring that you are purchasing the very lowest VOC-emitting products on the market  
Improves indoor air quality by trapping particles, removing them from the breathing zone and reducing their circulation  
Slip Resistant  
Cushion falls and reduces the risk of injury  
Soft to the touch but also for the body thanks to its shock absorption capacity which helps limit damage to muscles and articulations

#### Environmentally-Friendly

Made with solution-dyed fibers a process that reduces significantly water consumption

#### Best-in-class Warranty

30 Days No Questions Asked Replacement

#### Limitless designabilities

One of the most versatile floor coverings because you get to choose from a wide range of colors and textures  
Easy to mix and match colors and designs for a personalized look

#### Warm, quiet and comfortable

Without a doubt, the most comfortable flooring  
Greatest soundproofing and insulating properties  
Reduces heat loss  
Soft and warm to the touch

#### Quickship

Stock product for faster delivery

#### Stain resistant & easy to clean

Made with solution-dyed polypropylene, a fiber inherently resistant to stain and fade  
Stainproof for life meaning you're buying a carpet that offers lasting stain resistance

#### High performance

Made with our InnoFibe solution-dyed polypropylene fiber for excellent stain and fade resistance  
Part of our Mainstreet InnoFibe product offering, ideal for light commercial applications  
Made with EnduroBac backing which provides strong and non-fraying edge and offers durability and exceptional dimensional stability

#### Easy to install and repair

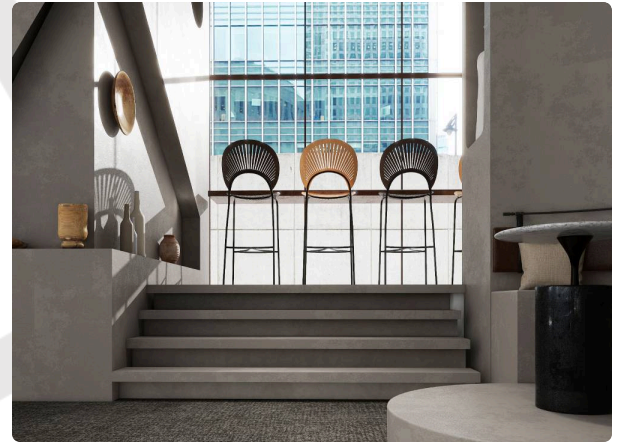
Easy installation with our 301 Carpet Tiles Adhesive  
Modular floor covering for fast and easy repair when needed

# Echo TECH

## Carpet Tiles • Mainstreet Tiles - InnoFibe

### Product Specifications

<b>Market Segments</b>	Builder, Hospitality, Pro, Property Management, Residential, Senior Living, Workspace
<b>Brand</b>	InnoFibe Tiles
<b>Collection</b>	Mainstreet Tiles - InnoFibe
<b>Style Name</b>	Echo
<b>Style Number</b>	TECH
<b>Colors</b>	6
<b>Construction</b>	Multi-Level Loop
<b>Format</b>	Tile
<b>Fiber Type</b>	100% Polypropylene
<b>Abrasion Resistance</b>	Residential and Light Commercial Use
<b>Dye Method</b>	Solution Dyed
<b>Pile Weight</b>	18.00 oz./y <sup>2</sup> (610.2 g/m <sup>2</sup> )
<b>Pile Height</b>	9/64 in (3.5 mm)
<b>Total Height</b>	7/32 in (5.5 mm)
<b>Backing</b>	Endurobac
<b>Stitch Count</b>	10/in (41/10 cm)
<b>Gauge</b>	1/12 in (2.11 mm)
<b>Density Factor</b>	3711
<b>Static Control</b>	n/a
<b>Flammability</b>	n/a
<b>Flooring Radiant Panel</b>	n/a
<b>Tarr</b>	2
<b>Indoor Air Quality</b>	GLP 101088
<b>Dimension</b>	19.7 x 19.7" (50 X 50 cm)
<b>Color Fastness</b>	n/a
<b>Certifications</b>	Green Label Plus, QuickShip, Stainproof for life
<b>Installation Methods</b>	Ashlar, Monolithic, Brick, Quarter Turn <a href="#">📄 Carpet Tiles Installation Guide</a>



### Color Names & Numbers

<b>#01</b>	Interstellar	<b>#02</b>	River Slate
<b>#03</b>	Wild Wolf	<b>#04</b>	Calm Koala
<b>#05</b>	Maple Bark	<b>#06</b>	Cowboy Boots

### Warranties

[📄 Carpet Tiles Warranty Guide](#)

[📄 Carpet Tiles Care & Maintenance Guide](#)

#### Residential use

Edge Ravelling *Lifetime*  
 No Questions Asked  
 Replacement *30 days*  
 Anti-Zippering *Lifetime*  
 Dimensional Stability *Lifetime*  
 Stain Resistance *Lifetime*  
 Static Control *Lifetime*  
 Wear Resistance *Lifetime*  
 Delamination Resistance  
*Lifetime*

#### Light commercial use

Delamination Resistance *7 Years*  
 Dimensional Stability *7 Years*  
 Anti-Zippering *7 Years*  
 Stain Resistance *7 Years*  
 Static Control *7 Years*  
 Wear Resistance *7 Years*  
 Edge Ravelling *7 Years*

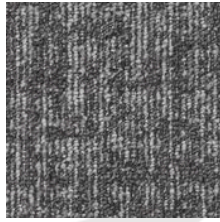
# Echo TECH

## Carpet Tiles • Mainstreet Tiles - InnoFibe

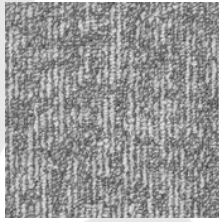
### Colors



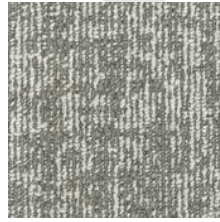
**#01**  
Interstellar



**#02**  
River Slate



**#03**  
Wild Wolf



**#04**  
Calm Koala



**#05**  
Maple Bark



**#06**  
Cowboy Boots

### Packaging information

<b>Units Per Box</b>	20
<b>Boxes Per Pallet</b>	32
<b>Box Weight</b>	57.35 pounds (26012.68 grams)
<b>Square Yards Per Box</b>	5.98
<b>Square Meters Per Box</b>	5.00
<b>Square Yards Per Pallet</b>	191.36
<b>Square Meters Per Pallet</b>	159.98

# Echo TECH Carpet Tiles • Mainstreet Tiles - InnoFibe

## Accessories



### **301 Carpet Tiles Adhesive - 4 U.S. Gallons**

4 Gallons (15.14 Litres)

1/16" x 1/32" x 1/32" U-notch Trowel

#### **Porous Coverage**

680 - 760 sq.ft. / 4 Gallons (63 - 71 m<sup>2</sup> / 15 L)

#### **Non-Porous Coverage**

680 - 760 sq.ft. / 4 Gallons (63 - 71 m<sup>2</sup> / 15 L)

- [🔗 Specifications - 301 Pressure Sensitive Carpet Tile Adhesive](#)
- [🔗 Label - 301 Pressure Sensitive Carpet Tile Adhesive](#)
- [🔗 SDS - 301 Pressure Sensitive Carpet Tile Adhesive](#)