

TERRA

TERRA WORKS HERE



2016

WORKWEAR / GLOVES / ACCESSORIES

CONTENTS

06	WORKWEAR
13	WOMEN'S WORKWEAR
15	HI-VIS WORKWEAR
21	GLOVES
27	ACCESSORIES
32	MARKETING

WORKWEAR



**DRILL****WORK SHORTS**

■ 100103BK	BLACK	32 • 34 • 36 • 38 • 40 • 42
■ 100103TN	TAN	32 • 34 • 36 • 38 • 40 • 42

- › 65% polyester / 35% cotton blend
- › Reinforced, bellows style front and back pockets
- › Cargo pockets with multi-compartment design
- › Side elastic and hammer loop

**VICE****WORK SHORTS**

■ 100113CH	CHARCOAL	32 • 34 • 36 • 38 • 40 • 42
------------	----------	-----------------------------

- › 100% cotton with heavy enzyme wash
- › 2 cargo style pockets
- › Side elastic for added comfort
- › Anti-slip waist band

**BRICK****CANVAS WORK PANT**

■ 100101GY	GREY	32 • 34 • 36 • 38 • 40 • 42	Inseam: 32
■ 100101TN	TAN	32 • 34 • 36 • 38 • 40 • 42	Inseam: 32

- › 100% cotton canvas
- › "Flipout" front tool pockets
- › Multi-compartment cargo pockets
- › Double knee construction for knee pads
- › Cordura cuff guard
- › Gusseted crotch for ease of movement
- › Anti-slip waist band

**KICK****TWILL WORK PANT**

■ 100105BK	BLACK	32 • 34 • 36 • 38 • 40 • 42	Inseam: 32
------------	-------	-----------------------------	------------

- › 65% polyester / 35% cotton blend
- › Reinforced, bellows style front and back pockets
- › Cargo pockets with multi-compartment design
- › Side elastic and hammer loop



CLIMB

LINED CANVAS WORK PANT

100109GY GREY 32 • 34 • 36 • 38 • 40 • 42 Inseam: 32

- › 10 ounce, 100% cotton canvas
- › Polar fleece lining
- › Gusseted crotch for ease of movement
- › Multi-compartment cargo pockets
- › Anti-slip waist band
- › Reflective piping and reinforced cuff





PIVOT

ZIP FRONT HOODIE

100202BK BLACK M - 2XL

- › 60% cotton and 40% cotton polyester blend
- › Embroidered front placket
- › 3 piece, lined hood with draw string
- › YKK metal zipper
- › 2 Kangaroo style pockets
- › Ribbed knit cuffs and hem



STREET

ZIP FRONT SHERPA HOODIE

1016335GRY GREY S - 3XL

- › 55% cotton / 45% polyester
- › Sherpa lining in hood and body
- › Jersey lining in sleeve
- › YKK metal zipper
- › 3 piece, lined hood with draw string
- › 2 Kangaroo style pockets
- › Ribbed knit cuffs and hem



GRIT

MULTI-POCKET TOOL VEST

103530BLKBULK BLACK ONE SIZE FITS MOST

- › 100% polyester
- › Reflective stripes
- › Adjustable shoulder and side straps
- › Multiple pockets for tool storage
- › Removable tool pouch
- › Breathable mesh back
- › Hammer loop
- › Tape measure holder slot
- › Hanging loop at back neckline



MATRIX

QUILTED LINED VEST

100320CH CHARCOAL S - 3XL

- › 10 ounce, 100% cotton canvas
- › 100% polyester, quilted lining
- › YKK metal zipper with inside storm flap
- › Pocket corners are reinforced with branded rivets for more durability
- › Front flap pocket for cell phone
- › High density **TERRA**® label on pocket flap
- › Inside pocket



BLAST

QUILTED FLANNEL JACKET

101203CGRN GREY M - 3XL

- › 100% cotton flannel shell with polyester taffeta lining
- › Oxford reinforced shoulders, elbows, cuffs and tail
- › 2 chest pockets with flap and snap closure
- › 3 piece lined, removable hood
- › **TERRA®** brand embossed snaps
- › Locker loop inside back neck line



ICE

QUILTED FREEZER JACKET

100302BK BLACK S - 3XL

- › Quilted taffeta shell 100% polyester in body and sleeves
- › 100% polyester ribbed knit at collar, cuffs and waistband
- › YKK metal zipper under wind flap
- › Pocket corners are reinforced with bartacks for durability
- › High density label on left pocket and back collar
- › Inside pocket





BOLT

WINTER JACKET

NEW

■ 100306BK

BLACK

S - 3XL

- › 100% polyester oxford shell
- › Seam sealed and waterproof
- › 200 grams of polyfill insulation
- › Knitted storm cuff
- › Multi-pocket exterior design with inside storage
- › YKK metal zipper with storm flap
- › Reflective print on chest and back yoke



SPEED

QUILTED WINTER JACKET

■ 100303BK

BLACK

S - 3XL

- › 10 ounce, 100% cotton canvas with oxford accents
- › Quilted polyester lining
- › Gusseted back and shoulders for ease of movement
- › Reflective piping
- › Tail on back of jacket for extra coverage
- › Polar fleece lined removable hood with draw cord
- › Inside knit rib cuff
- › YKK metal zipper with hidden storm flap



3 PIECE PVC RAIN SUIT

112110Y

YELLOW

S - 2XL

- › Polyester / PVC material with welded seams for durability
- › Back and underarm vents for breathability
- › Detachable hood with draw string adjusters
- › Corduroy collar for added comfort
- › Front storm flap with brass snaps on jacket
- › Adjustable wrists and pant cuffs
- › Adjustable quick release clip elastic suspenders



3 PIECE POLYESTER RAIN SUIT

112900Y

YELLOW

M - 2XL

112900G

GREEN

M - 2XL

- › Heavy duty 210 denier polyester for superior rip and snag resistance
- › Double stitched, taped and heat sealed seams
- › Multiple front and back vents for more breathability
- › Detachable hood with draw string adjusters
- › Jacket and pants can be folded into zip hood / storage pouch
- › Corduroy collar for added comfort
- › Adjustable wrists and pant cuffs with self-gripping strap
- › Adjustable quick release clip elastic suspenders

WOMEN'S WORKWEAR



TIMBER



PRESSURE

WOMEN'S FLANNEL SHIRT

NEW

100450TR RED S - XL

- › 100% yarn-dyed cotton flannel
- › Chest and waist dart for more comfortable fit
- › Black bubble snaps with metal ring
- › Left side patch pocket
- › Sleeve pleat for added comfort
- › Elbow patch

WOMEN'S ZIP FRONT HOODIE

NEW

100451TR BURGUNDY S - XL

- › 60% cotton / 40% polyester fleece
- › Anti-pilling finish
- › Jersey lining in hood
- › Zipper closure and branded zipper pull
- › 3 piece hood with draw cord and metal lace tip
- › 2 Kangaroo style pockets
- › Ribbed knit cuffs and hem



HI-VIS 5 POINT TEAR AWAY VEST

NEW

116523PK PINK S / M • L / XL

- › 100% polyester mesh
- › 2 inch reflective tape over 4 inch contrast stripe
- › Self-gripping strap closure at front, shoulders and sides to facilitate anti-entanglement
- › 2 front pockets with flaps for secure storage
- › ID badge holder
- › 2 microphone loops on front and "D" ring harness access at back yoke
- › CSA Z96-09 Class 1 Level 2 (Pink)
- › ANSI / ISEA 107 - 2010 Type O Class 1 (Pink)

HI-VIS WORKWEAR



HI-VIS 5 POINT TEAR AWAY VEST

116523YL	YELLOW	S/M • L/XL • 2XL/3XL
116523OR	ORANGE	S/M • L/XL • 2XL/3XL
116523PK	PINK	S/M • L/XL

- › 100% polyester mesh
- › 2 inch reflective tape over 4 inch contrast stripe
- › Self-gripping strap closure at front, shoulders and sides to facilitate anti-entanglement
- › 2 front pockets with flaps for secure storage
- › ID badge holder
- › 2 microphone loops on front and "D" ring harness access at back yoke
- › CSA Z-96-09 Class 2 Level 2 (Yellow / Orange)
- › CSA Z-96-09 Class 1 Level 2 (Pink)
- › ANSI / ISEA 107 - 2010 Type R Class 2 (Yellow / Orange)
- › ANSI / ISEA 107 - 2010 Type O Class 1 (Pink)



HI-VIS SURVEYOR'S VEST

116522YL	YELLOW	S - 3XL
116522OR	ORANGE	S - 3XL

- › 100% polyester 150 denier
- › 2 inch reflective tape over 4 inch contrast stripe
- › Snap closure
- › Multi-pocket design
- › Full size map or clip board pocket on back
- › 2 microphone / radio transmitter loops
- › CSA Z-96-09 Class 2 Level 2 (Yellow / Orange)
- › ANSI / ISEA 107 - 2010 Type R Class 2 (Yellow / Orange)



HI-VIS SHORT SLEEVE T-SHIRT

116524YL	YELLOW	S - 3XL
116524OR	ORANGE	S - 3XL
116524BK	BLACK	S - 3XL

- › 100% polyester bird's eye mesh
- › 2 inch reflective tape over 4 inch contrast stripe
- › Moisture wicking treated to help keep you cool
- › Extra safety stripes around sleeves
- › Left chest pocket
- › 2 microphone loops
- › CSA Z-96-09 Class 2 Level 2 (Yellow / Orange)
- › CSA Z-96-09 Class 1 Level 2 (Black)
- › ANSI / ISEA 107 - 2010 Type R Class 3 (Yellow / Orange)
- › ANSI / ISEA 107 - 2010 Type O Class 1 (Black)



HI-VIS LONG SLEEVE T-SHIRT

116525YL	YELLOW	S - 3XL
116525OR	ORANGE	S - 3XL
116525BK	BLACK	S - 3XL

- › 100% polyester bird's eye mesh
- › 2 inch reflective tape over 4 inch contrast stripe
- › Moisture wicking treated to help keep you cool
- › Extra safety stripes around sleeves
- › Left chest pocket
- › Knitted cuff
- › 2 microphone loops
- › CSA Z-96-09 Class 2 Level 2 (Yellow / Orange)
- › CSA Z-96-09 Class 1 Level 2 (Black)
- › ANSI / ISEA 107 - 2010 Type R Class 3 (Yellow / Orange)
- › ANSI / ISEA 107 - 2010 Type O Class 1 (Black)



HI-VIS TRAFFIC CONTROL COVERALL

116521YL	YELLOW	S - 3XL
116521OR	ORANGE	S - 3XL

- › 100% polyester twill fabric with mesh panels on legs and arms for ventilation
- › 2 inch reflective tape over 4 inch contrast stripe
- › 2-way zipper with hidden snap closure
- › Multi-pocket design
- › 2-way leg zippers for ventilation and easy boot access
- › 2 microphone / radio transmitter loops
- › Self-gripping strap, adjustable leg opening at cuff
- › CSA Z-96-09 Class 3 Level 2 (Yellow / Orange)
- › ANSI / ISEA 107 - 2010 Type R Class 3 (Yellow / Orange)



HI-VIS RAIN SUIT

116520YL	YELLOW	S - 3XL
116520OR	ORANGE	S - 3XL

- › 300 denier polyester oxford with polyurethane coating
- › Jacket lining 100% polyester mesh
- › 2 inch reflective tape over 4 inch contrast stripe
- › Fully taped and heat seam sealed
- › Detachable hood with 2 levels of snaps to accommodate hard hat
- › 2 microphone / radio transmitter loops
- › Plastic ID badge holder
- › Fully elasticized waist with pass through pockets (pant)
- › CSA Z-96-09 Class 3 Level 2 (when worn with striped pant)
- › CSA Z-96-09 Class 2 Level 2 (rain jacket only)
- › ANSI / ISEA 107 - 2010 Type R Class 3 (Yellow / Orange)



HI-VIS WORKWEAR

FALL 2016



HI-VIS FALL 2016



HI-VIS FALL 2016



HI-VIS FLEECE JACKET

NEW

	116506YL	YELLOW	S - 3XL
	116506OR	ORANGE	S - 3XL
	116506BK	BLACK	S - 3XL

- › **Shell:** 100% polyester anti-pill knitted fleece
- › 2 inch reflective tape over 4 inch contrast stripe
- › Detachable hard hat hood with draw string and 2 rows of snaps
- › Dual microphone loops and ID badge holder
- › Knitted wrist and hem
- › 2 inch kangaroo style pocket
- › CSA-Z-96-15 Class 2 Level 2 (Yellow / Orange)
- › CSA-Z-96-15 Class 1 Level 2 (Black)
- › ANSI / ISEA - 107 - 2015 Type R Class 3 (Yellow / Orange)
- › ANSI / ISEA - 107 - 2015 Type O Class 1 (Black)

HI-VIS LINED FREEZER JACKET

NEW

	116505YL	YELLOW	S - 3XL
	116505OR	ORANGE	S - 3XL
	116505BK	BLACK	S - 3XL

- › **Shell:** 100% 150 denier polyester Oxford with diamond quilting
- › **Lining:** 100% 210T taffeta with 3.5 ounce polyester insulation
- › 2 inch reflective tape over 4 inch contrast stripe
- › Knit gusset at back of shoulders
- › Storm flap inside center front zipper
- › Black knit cuffs with black hem
- › Stand up collar with fleece lining
- › CSA-Z-96-15 Class 2 Level 2 (Yellow / Orange)
- › CSA-Z-96-15 Class 1 Level 2 (Black)
- › ANSI / ISEA - 107 - 2015 Type R Class 3 (Yellow / Orange)
- › ANSI / ISEA - 107 - 2015 Type O Class 1 (Black)



HI-VIS FALL 2016



HI-VIS PARKA

NEW

	116504YL	YELLOW	S - 3XL
	116504OR	ORANGE	S - 3XL

- › **Shell:** 100% 300 denier polyester with PU coating
- › Seam sealed and waterproof
- › **Lining:** 100% diamond quilted polyester taffeta with 7 ounce polyfill insulation
- › 2 inch reflective tape over 4 inch contrast stripe
- › Detachable hard hat hood with draw string and 2 rows of snaps
- › Storm flap cover 2-way center zipper
- › Multi-pocket, loss prevention design
- › Embroidery zipper
- › Black cuffs with black hem
- › Dual microphone loops and ID badge holder
- › CSA-Z-96-15 Class 2 Level 2 (Yellow / Orange)
- › ANSI / ISEA - 107 - 2015 Type R Class 3 (Yellow / Orange)



HI-VIS FALL 2016



HI-VIS OVERALL

NEW

	116507YL	YELLOW	S - 3XL
	116507OR	ORANGE	S - 3XL

- › **Shell:** 100% 300 denier polyester with PU coating
- › Seam sealed and waterproof
- › **Lining:** 100% diamond quilted polyester taffeta with 6 ounce polyfill insulation
- › 2 inch reflective tape over 4 inch contrast stripe
- › Storm flap covers 2-way center zipper
- › 2-way ankle to hip zippers
- › Elasticized waist
- › Heavy duty elastic shoulder straps and clips
- › Multi-pocket, loss prevention design
- › Black leg cuffs
- › CSA-Z-96-15 Class 2 Level 2 (Yellow / Orange)
- › ANSI ISEA -107 - 2015 Class E (Yellow / Orange)

HI-VIS FALL 2016



1

+



2

+



3

+



4



5



6



7



HI-VIS JACKET - SYSTEM 7 IN 1 -

NEW

	116501YL	YELLOW	S - 3XL
	116501OR	ORANGE	S - 3XL

- › **Shell/liner:** 100% 300 denier polyester with PU coating
- › Seam sealed and waterproof
- › **Lining:** 100% polyester taffeta
- › Removable HI-VIS liner (reverses to black) with zip off sleeves
- › 2 inch reflective tape over 4 inch contrast stripe
- › Detachable hard hat hood with draw string and 2 rows of snaps

- › Multi-pocket, loss prevention design on shell and liner
- › Adjustable black cuffs with black hem
- › Dual microphone loops and ID badge holder
- › Embroidery zipper
- › CSA-Z-96-15 Class 2 Level 2 (Yellow / Orange)
- › ANSI / ISEA - 107 - 2015 Type R Class 3 (Yellow / Orange)

HI-VIS FALL 2016



HI-VIS TOQUE

	1316550YL	YELLOW	One size fits most
	1316550OR	ORANGE	One size fits most

- › 100% knitted acrylic toque
- › Knitted reflective band
- › **Terra**® brand woven label
- › One size fits most

HI-VIS ACCESSORIES

FALL 2016

HI-VIS FALL 2016



HI-VIS BALACLAVA

NEW

	130202YL	YELLOW	One size fits most
	130202OR	ORANGE	One size fits most


- › 100% knitted acrylic balaclava with **THINSULATE**™
- › One hole design
- › **Terra**® brand woven label
- › One size fits most

HI-VIS FALL 2016



HI-VIS BALACLAVA

NEW

	130203YL	YELLOW	One size fits most
	130203OR	ORANGE	One size fits most

- › 100% knitted acrylic balaclava with **THINSULATE**™
- › Three hole design
- › **Terra**® brand woven label
- › One size fits most

GLOVES



CUT RESISTANT GLOVES - LEVEL 3

■ B51162TR GREY M - XL



- › Nitrile dipped palm with satin finish
- › HPPE liner - 13 gauge
- › Cut protection level 3
- › Elastic cuff helps to keep dirt & debris out
- › Unlined gloves



DEXTERITY GLOVES - NITRILE

■ B51142TR YELLOW M - XL



- › HI-VIS nylon liner 15 gauge
- › Nitrile foam dipped palm
- › Self-gripping strap at wrist secures glove for a more snug fit
- › "Sanitized" treatment
- › Elastic cuff helps to keep dirt & debris out
- › Unlined gloves



COWSPLIT GLOVES

■ B11792TR BROWN S/M • L/XL



- › Cowsplit palm
- › Cotton back
- › Rubberized cuff
- › Palm lined for comfort and sweat absorption

ICONS



COW SKIN LEATHER



GOAT SKIN LEATHER



PIG SKIN LEATHER



DEER SKIN LEATHER



HIGH VISIBILITY



REFLECTIVE



LEVEL 5 CUT RESISTANT



LEVEL 3 CUT RESISTANT



RESISTANT TO ABRASION



WATER RESISTANT



BREATHABLE



LINED FOR COLD WEATHER



MOISTURE WICKING



HIGH DEXTERITY



SUPERIOR GRIP



VIBRATION / IMPACT DAMPING



MECHANICS GLOVES

78918TR

BLACK

M - XL



- › Synthetic leather palm
- › Nylon back
- › Rubber protection on back of hand
- › Padded patch on palm
- › PVC patches on finger tips
- › Adjustable self-gripping strap closure
- › Unlined gloves



MECHANICS GLOVES

B8700TR

YELLOW

S/M • L/XL



- › Synthetic leather palm
- › Spandex back
- › Self-gripping strap at wrist secures glove for a more snug fit
- › Rubber protection at back of hand
- › Unlined gloves



MECHANICS GLOVES

78914TR

LIME

M - XL



- › Synthetic leather palm
- › Nylon HI-VIS spandex back
- › Padded PVC patches on palm
- › PVC on fingertips
- › Neoprene cuff with self-gripping strap closure
- › Unlined gloves



MECHANICS GLOVES

78907TR

BLACK

M - XL



- › Synthetic leather palm
- › Nylon breathable back
- › Neoprene patch on knuckle
- › PVC on palm and fingers
- › Black neoprene cuff with self-gripping strap closure
- › Unlined gloves



WOMEN'S MECHANICS GLOVES

NEW

789304TR

PINK

S - L



- › Synthetic cow leather palm
- › Padded PVC patches on palm
- › Thumb and index with touch screen sensitive fabric
- › Breathable back
- › Neoprene cuff with self-gripping strap closure
- › Unlined gloves



LINED WINTER LATEX FOAM COATED GLOVES

751149TR

RED

M/L • L/XL



- › Latex foam dipped palm
- › Red polyester knit shell
- › Black acrylic lining



COWSPLIT GLOVES

71694TRBOAL

GREY

L



- › Cowsplit palm
- › Cotton back
- › Rubberized cuff
- › Acrylic pile lining



COWHIDE GLOVES

B2361TRLXL (CUT CASE) WHITE

L - XL


3M
Thinsulate
INSULATION

- › Cowhide palm
- › Cotton back
- › Rubberized cuff
- › C-100 THINSULATE™ lined



GOAT SKIN MITTS

7779TRL BLACK L



HIPORA®

- › 75 denier nylon & 75 denier honeycomb nylon back
- › Water repellent goatskin palm
- › **THERMOLITE™** lining
- › 5 finger insert
- › **HIPORA®** breathable waterproof barrier
- › Hot patch insert pocket on back with water resistant zipper
- › Elastic wrist and adjustable draw cord cuff



MECHANICS GLOVES

78776TR BLACK M - XL



Thinsulate
INSULATION

- › Synthetic leather palm
- › Nylon back and neoprene knuckle
- › PVC patches on palm and on fingertips
- › Self-gripping strap closure
- › C-100 **THINSULATE™** lining
- › Water repellent insert



RECREATIONAL GLOVES

B8775TRL YELLOW L



HIPORA®

- › Deerskin leather palm and finger tips
- › Heavy denier nylon
- › Reflective piping
- › Adjustable strap at wrist and draw cord at cuff
- › **THERMOLITE™** lining 140 grams
- › **HIPORA®** water barrier



MECHANICS GLOVES

78919TR YELLOW / GREY M - XL



- › Textured PU palm
- › Nylon spandex back
- › Neoprene knuckle and finger joints
- › Rubber protection on fingertips
- › Self-gripping strap closure
- › Fleece lined
- › Water barrier inserts

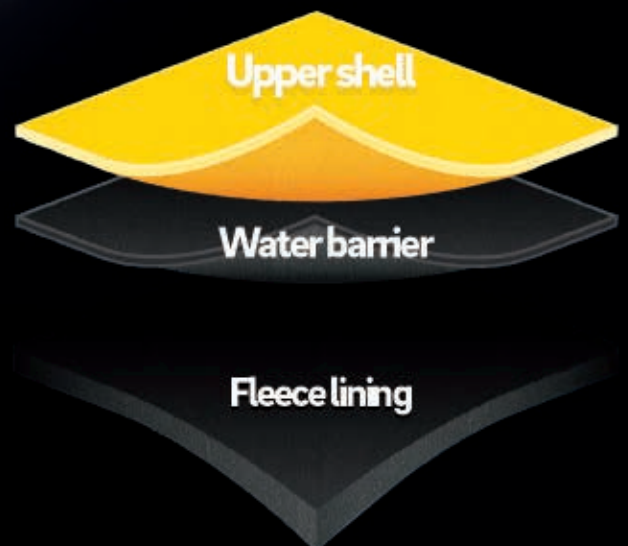
WATER RESISTANT MECHANICS GLOVES

We have developed the perfect water resistant winter work glove to keep your hands warm and dry to help you get the job done right !

TECH SPECS



Neoprene knuckle and finger joints



ACCESSORIES



TOOL BAG 16 INCH OPENING

609004TR

BLACK

ONE SIZE

- › Removable padded shoulder strap
- › 1680 & 600 denier polyester
- › 16 inch opening
- › 11 exterior & 3 interior pockets with 12 nylon loops
- › Exterior tape measure clip & aluminum carabiner
- › Rubber feet for added stability
- › Steel handle with neoprene grip rotates 180 degrees
- › Size: L.: 16 in. x D.: 9.5 in. x H.: 10 in.



TOOL BAG 18 INCH OPENING

609005TR

BLACK

ONE SIZE

- › 600 denier polyester double wall construction
- › Hard plastic reinforced bottom with diamond plate pattern
- › 18 inch opening
- › Heavy duty zipper
- › 2 self-gripping strap closure cargo pockets
- › 6 open exterior pockets
- › Size: L.: 18 in. X D.: 11.5in. H.: 11.5in.



EXTERIOR HANGING BUCKET TOOL SKIRT

609006TR

BLACK

ONE SIZE

- › 1680 & 600 denier polyester
- › 32 exterior pockets & pouches
- › Fits most 5 gallon buckets
- › 2 adjustable straps with clips
- › Fold-in design allows for bulk storage inside bucket



CAPS

130101AST

PACK OF 6

ONE SIZE FITS MOST

- › Front and back embroidered logo
- › 100% cotton twill
- › Adjustable back



CAPS

130102AST

PACK OF 6

ONE SIZE FITS MOST

- › Front and side embroidered logo
- › 100% cotton twill
- › Adjustable back



BALACLAVA

130201BK

BLACK

ONE SIZE FITS MOST

- › Stretch fabric with soft fleece interior
- › Flexibility in seams, follows curves
- › Retains body heat
- › Prevents cold air touching skin
- › Unlined



REVERSIBLE NECK WARMER

1303001

BLACK / GREY

ONE SIZE FITS MOST

- › 100% polyester polar fleece
- › Reversible
- › 2 colors
- › Lined



KNITTED RIBBED TOQUE

■ 1316549 BLACK ONE SIZE FITS MOST

- › 100% acrylic 2x2 rib
- › Unlined

REVERSIBLE JACQUARD TOQUE

■ 1316548 BLACK / GREY ONE SIZE FITS MOST

- › 100% acrylic jacquard
- › High density label
- › 2 colors
- › Reversible
- › Lined



REVERSIBLE JACQUARD TOQUE

■ 1316547 BLACK/ YELLOW ONE SIZE FITS MOST

- › Men's knit toque with **TERRA®** logo
- › Reversible
- › Lined



LINED AVIATOR HAT

■ 1303100BK BLACK S/M • L-XL

- › 100% 10.5 ounce cotton canvas
- › 100% polyester sherpa lining
- › **3M THINSULATE™** insulation
- › Reflective tape all around
- › Adjustable plastic clip with self fabric band
- › High density **TERRA®** label at back
- › Lined





SOCKS 2-PACK

■ 101646BLK	BLACK / GREY	ONE SIZE FITS MOST
□ 101646WHT	WHITE / GREY	ONE SIZE FITS MOST

- › Mix yarn (cotton / polyester / spandex)
- › Color blocking
- › Different weaving to offer compression points and superior comfort

LONG SOCKS 2-PACK

■ 103007BLK	BLACK	ONE SIZE FITS MOST
■ 103016CHL	CHARCOAL	ONE SIZE FITS MOST

- › Mix yarn (cotton / polyester / spandex)
- › Long socks / color blocking
- › Different weaving to offer compression points and superior comfort



SOCKS 2-PACK

■ 101859BLK	BLACK	ONE SIZE FITS MOST
■ 101896CHL	CHARCOAL	ONE SIZE FITS MOST

- › Mix yarn (cotton / polyester / spandex)
- › Color blocking
- › Long socks
- › Different weaving to offer compression points and superior comfort



PREMIUM COMFORT FOOTBED®

10416004001	RED/BLUE	08 - 09
10416004002	RED/BLUE	10 - 11
10416004003	RED/BLUE	12 - 13

- › Cushion gel-filled (provides more comfort, shock absorption and distributes the pressure)
- › High-quality material (increases strength and durability)
- › Antimicrobial tissue (reduce foot odour)
- › 21 perforations (improve air flow and comfort)
- › Soft contouring of the arch for gentle support
- › Can easily be trimmed with scissors



CLEANFEET® TECHNOLOGY

Prevent odour before it starts

CLEANFEET® technology is a revolutionary patented technology that actually prevents odour before it starts. We don't use chemicals or environmentally damaging processes. CLEANFEET® technology uses friendly, naturally occurring microbes that are 100% environmentally friendly.



WARM FELT INSOLES

10411005050	GREY	08 - 09
10411005051	GREY	10 - 11
10411005052	GREY	12 - 13

- › Hot felt insole
- › Reduces fatigue and adds comfort
- › Wear resistant and durability

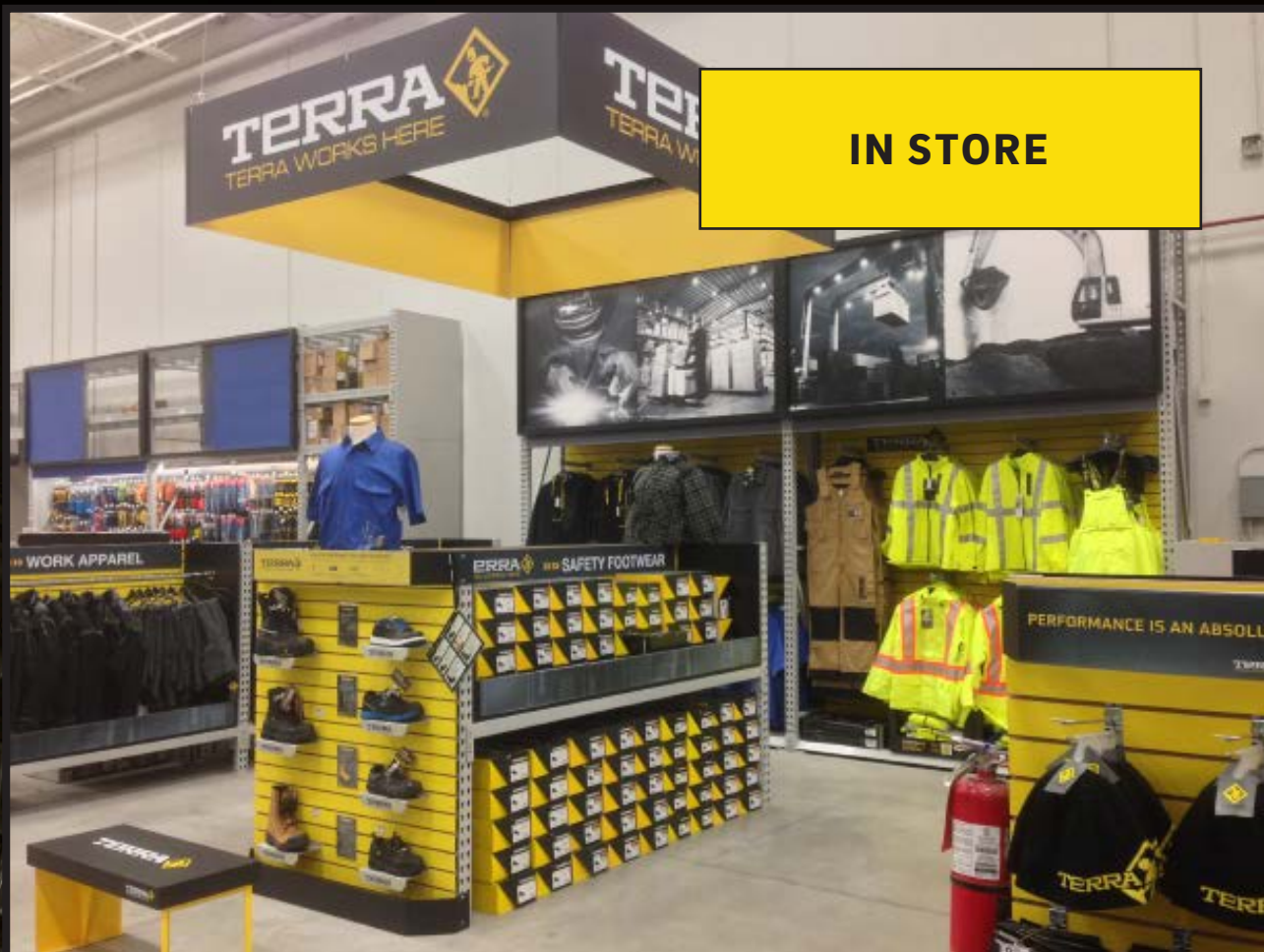
MARKETING

GROUPE BBH INC. in-house marketing team is working hard together, in the same office to create flyers, brochures and one of a kind designs to keep our customers informed on our newest products and up-coming promotions.

www.groupebbh.com



**Let us help you optimize
your space while maximizing
your sales.**



IN STORE

CARDBOARD BIN BOX DISPLAYS

Ask your Groupe BBH representative how our cardboard bin display program can help maximize presentation and increase sales.

Cardboard bin box display
99BOXDIS



CLOTHING RACKS

4 FOOT WIDE, ADJUSTABLE, METAL,
CLOTHING RACK

99RACKX2SET



2 FOOT WIDE, METAL, CLOTHING RACK

99RACKHDSET



RETAIL

CARDBOARD, MULTI-FUNCTIONAL
METAL DISPLAY RACK

99RACKDISP



CARDBOARD, STACKABLE CUT TRAY DISPLAYS

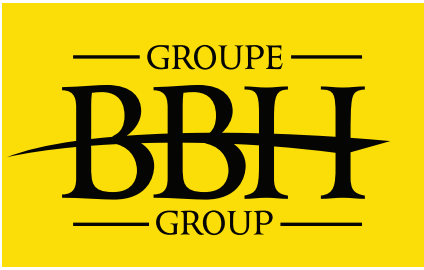
BIG - 99BOX199
SMALL - 99BOX200

DISPLAY PROGRAM

4- TIER SPINNER RACK
99SPIN4



CUSTOMIZED
PALLETIZED PACKAGING



GROUPE BBH INC. (HEAD OFFICE)

4400, Hickmore
Montreal, QC Canada H4T 1K2

☎ (514) 633-6765

☎ (514) 633-0506

☎ FREE 1 (800) 363-9312

Contact :

SALES & CUSTOMER SERVICE
sales@groupebbh.com

MARKETING
marketing@groupebbh.com

KEY SOURCE MARKETING WESTERN CANADA

BRITISH COLUMBIA

Allan Eyton, Barry Johnson & Dean Johnson
keysources@telus.net

EDMONTON (ALBERTA)

Will Hamann
keysourcedmonton@telus.net

CALGARY (ALBERTA)

Sean Bailey
keysourcecalgary@telusplanet.net

RB GLOBAL MANAGEMENT FORT McMURRAY (ALBERTA)

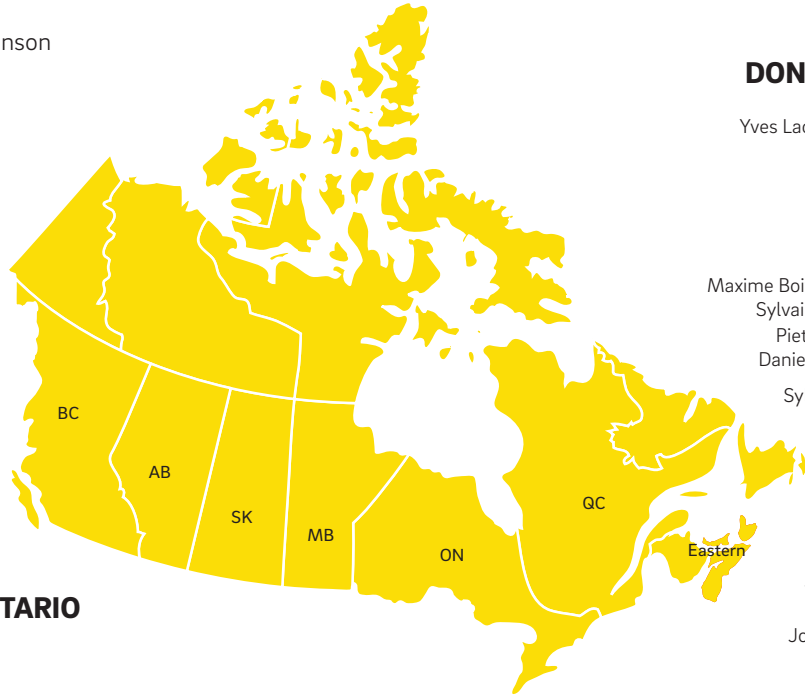
Alexandre Paquette
alex@rbglobalsafety.com

MANITOBA & SASKATCHEWAN

National Workwear Specialist
Terry Hendrichs
terryh@groupebbh.com
☎ (204) 229-3581

DONWIN MARKETING INC. ONTARIO

Don Boyd don.boyd@donwin.com
Jim Irwin jim.irwin@donwin.com
Gary Mitchell gary.mitchell@donwin.com



DONWIN MARKETING INC. OTTAWA/ GATINEAU

Yves Lachapelle yves.lachapelle@donwin.com
☎ (613) 402-9837

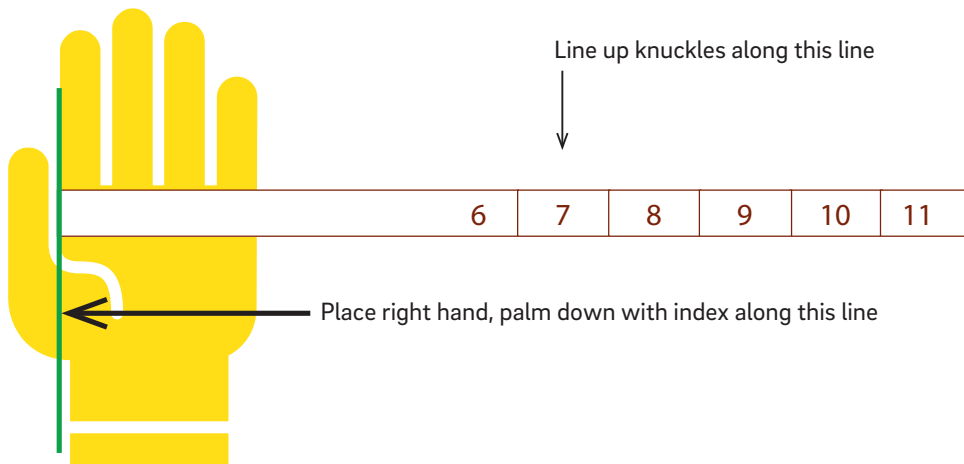
QUEBEC

Maxime Boivin-Oligny maximeb@groupebbh.com
Sylvain Thauvette sylvaint@groupebbh.com
Pietro Molinaro pietrom@groupebbh.com
Daniel Provencher danielp@groupebbh.com
Sylvain Goulet sylvaing@groupebbh.com

JESSOME MARKETING EASTERN CANADA

Joel Jessome joel@jessomemarketing.ca

GLOVE SIZING GUIDE



10 - 11	XL
09 - 10	L
08 - 09	M
07 - 08	S
06 - 07	XS

TM used under license from Kodiak Group Holdings Co. Manufactured under license by Groupe BBH Inc.

www.terrafootwear.com www.groupebbh.com

