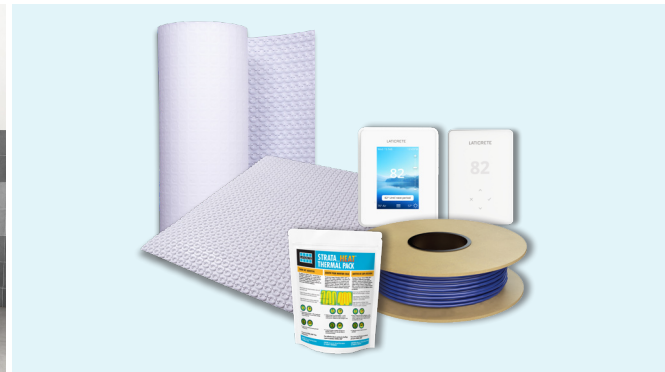
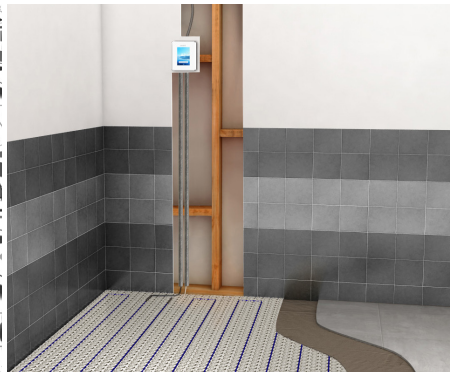
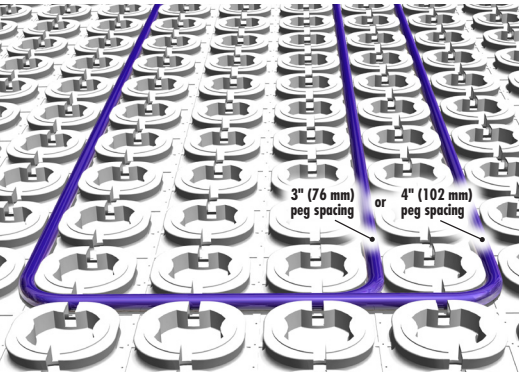




STRATA_HEAT™

When it comes to floor heat, make the smart choice.



The STRATA_HEAT™ floor heating system is the most advanced radiant floor heating system available in the world. Consisting of a high performance floor heating wire, an uncoupling mat, two Wi-Fi enabled thermostats and the world's first heat conductive thin-set additive – the system provides you with the most advanced and efficient floor heating system for your next installation.

STRATA_HEAT™ Wire

Spliceless design with ETFE inner jacket for an easier installation

Single diameter, burying the cold lead is no longer needed

Heavy duty construction, outer jacket provides exceptional performance and durability

No minimum on a straight run length like other systems – easier to layout

Highly conductive copper wiring provides maximum heat transfer

STRATA_HEAT Mat±

Mortar hydration vents accelerate thin-set curing for faster dry time of porcelain and larger format tiles – grout the next day

STRATA_HEAT™ Mat design maximizes thin-set to wire contact producing a faster heat-up time with even heat distribution

STRATA_HEAT Wire installs easily in mat – lays flat and secure

Allows for multiple wire spacing combinations for design and heating flexibility

Optical coverage verification – translucent features allows for easy determination of mortar coverage

Suitable Substrates (Interior Horizontal Dry and Intermittently Wet Surfaces Only)

- HYDRO BAN® Board
- HYDRO BAN Shower Pans
- Concrete†
- Mortar Beds
- Exterior Glue Plywood‡
- Existing Ceramic Tile and Stone
- Cement Terrazzo
- Cement Backer Board

Uses

Use in horizontal applications under tile and stone installations and other wear surfaces in dry and intermittently wet areas

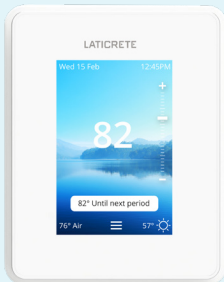
Packaging

- STRATA_HEAT™ Spacing Strips per box, 40 x 12" (30.5 cm) long
- 120V and 240V wire length options ranging from 50 ft to 830 ft (5.2 m to 253 m) spools
- STRATA_HEAT Mat 161 ft² roll – 39" W x 49' 2" L (15 m² roll – 1 m W x 15 m L)
- STRATA_HEAT Mat 10 x 8.6 ft² sheets – 31" W x 39" L (10 x 0.8 m² sheet – 0.8 m W x 1 m L)

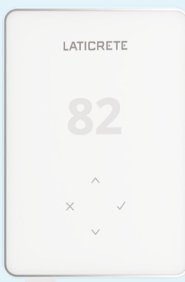


STRATA_HEAT™

When it comes to floor heat, make the smart choice.



STRATA_HEAT™ Smart LCD Thermostat



STRATA_HEAT Wi-Fi Thermostat



Data Sheet 026.3



STRATA_HEAT™ system is controlled by your choice of two innovative smart Wi-Fi compatible thermostats. The Wi-Fi Thermostat offers a digital readout with a minimalist design while the Smart LCD Wi-Fi Thermostat offers a full-color, capacitive, touch screen that works like smartphones and tablets. Both versions can be controlled through the MySTRATA_HEAT app on your favorite smart device or with most home automation hubs, providing real-time information for optimal control. Available only from LATICRETE®, STRATA_HEAT Thermal Pack[§], a thin-set additive that uses thermal diffusion technology for more efficient distribution of heat.

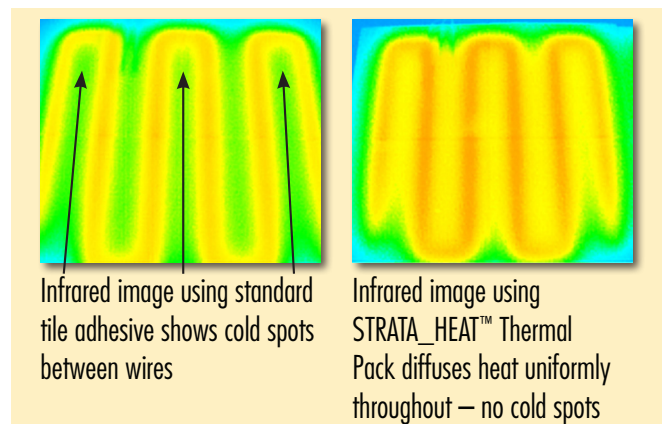
THERMOSTAT

- Simple STRATA_HEAT™ smartphone app
- Uses smartphone GPS location services to learn heating routines
- Home automation hub compatible
- Single step set-up through QR code
- Two versions available, Smart LCD Thermostat and Wi-Fi Thermostat

THERMAL PACK

- Eliminates cold spots between wires
- Reduces energy costs by 15%
- Economical and energy efficient
- Faster floor heat up

MODEL	TYPE	SUPPLY	MAX. LOAD	FLOOR SENSOR	GFCI
0804-0403-T	Wi-Fi Thermostat	120V/240V	15A, 60 Hz	NTC (10K)	5 mA
0804-0404-T	Smart LCD Thermostat	120V/240V	15A, 60 Hz	NTC (10K)	5 mA



Infrared image using standard tile adhesive shows cold spots between wires

Infrared image using STRATA_HEAT™ Thermal Pack diffuses heat uniformly throughout — no cold spots

* See Data Sheet 230.99 for complete warranty information.

† Use HYDRO BAN® Board under STRATA_HEAT™ Wire as a thermal barrier to prevent heat loss.

‡ Over TCNA approved constructs using plastic lath when using portland cement based self-leveling underlayments.

§ United States Patent No.: US2019211248

¶ 3 or 4 peg spacing only. 3-2-3 spacing is not UL approved.

± U.S. Patents Nos. 9,777,931; 10,006,644; 10,215,423; D806,280; and patents pending

