

ATHLETICA™

PRO
by/par SOLutions

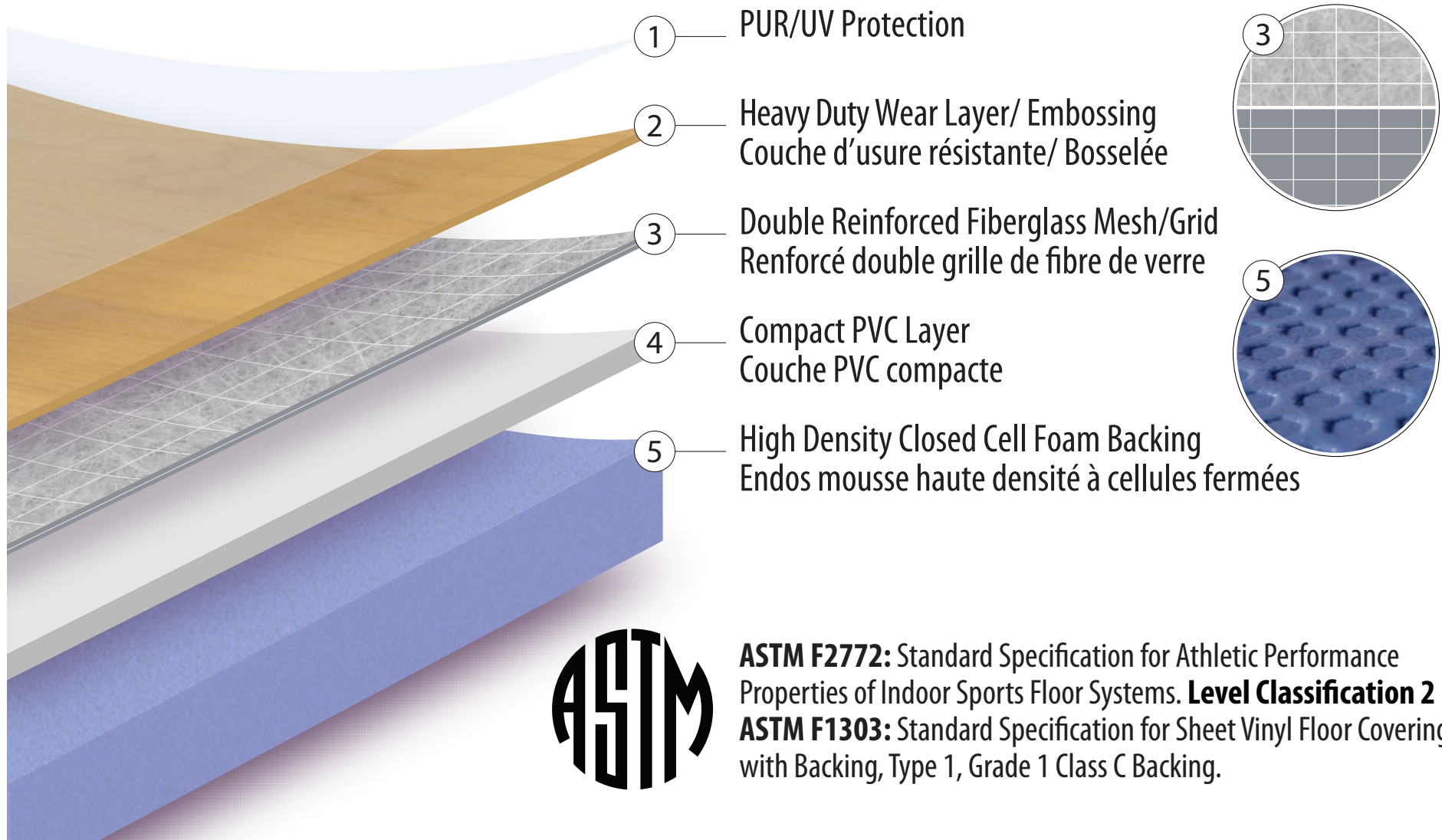
HIGH PERFORMANCE SPORT FLOOR

- SPORTS AND ACTIVITY • PERFORMANCE • SAFETY • DURABLE
- GYMNASIUM • EDUCATION • HOSPITALITY ASSISTED LIVING
- RECREATION CENTRES

Athletica is an Indoor Sport and Multi-Purpose Flooring with a heavy duty wear layer and PUR/UV protection. Reinforced with a double fiberglass mesh/grid and supported by a high density closed cell foam backing.



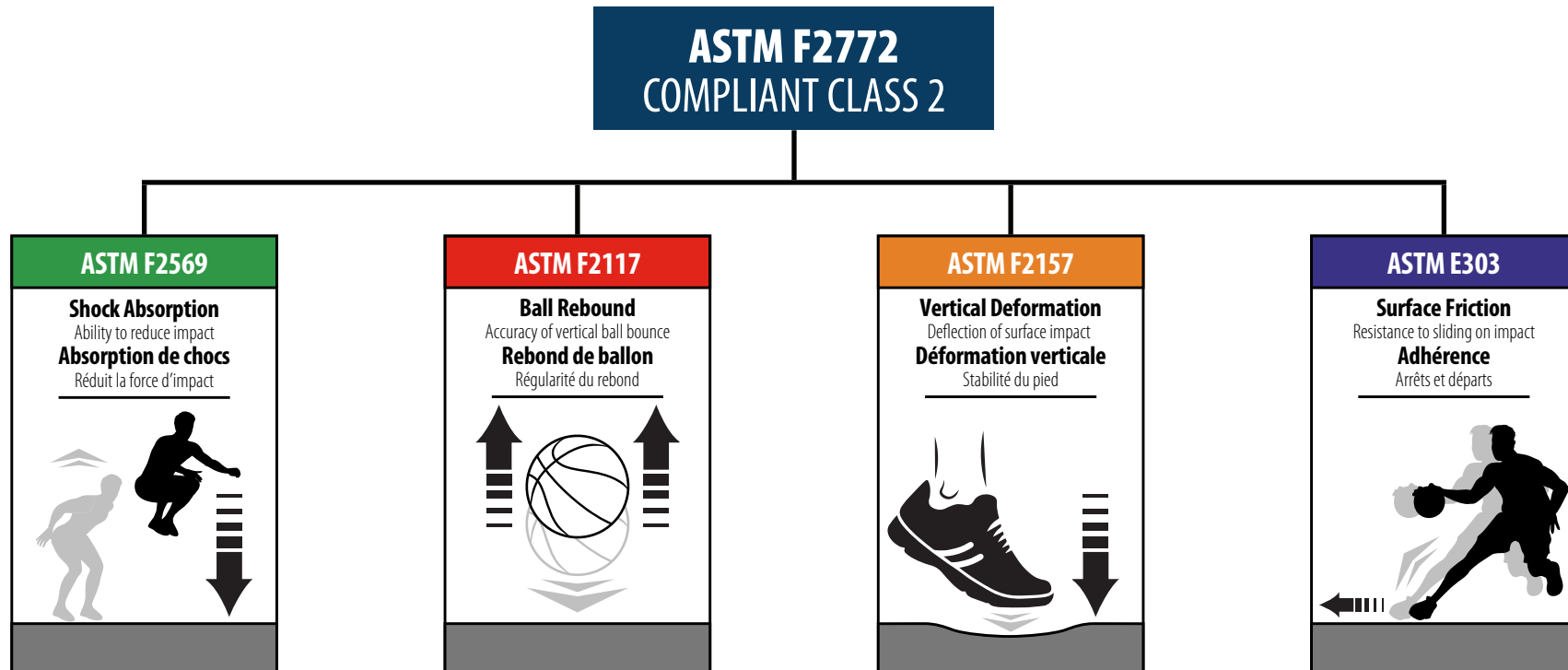
CHARACTERISTICS - BREAKDOWN



STANDARDS - SAFETY FIRST

ASTM F2772: Standard was developed for safety first and performance.

How can you tell if a sport installation is without risk for the athletes and that this sport flooring complies with the actual safety standards.



ATHLETICA conforms to **ASTM F2772:** Standard Specification for Athletic Performance Properties of Indoor Sports Floor Systems. Level Classification C2

SHOCK ABSORPTION - FORCE REDUCTION

ASTM F2569: Standard Test Method for Evaluating the Force Reduction Properties of Surfaces for Athletic Use

1. Significance and Use

• The force reduction property is just one of the important properties of a surface used for athletic activity. It may be an indicator of the performance, safety, comfort, or suitability of the surface.

2. Scope

• This test method covers the quantitative measurement and normalization of impact forces generated through a mechanical impact test on an athletic surface. The impact forces simulated in this test method are intended to represent those produced by lower extremities of an athlete during landing events on sport or athletic surfaces.

3. What you should know

- Shock absorption is the impact force absorbed by the floor when running, jumping or falling. Complying levels (23% - 33%) of shock absorption in a floor can reduce stress, fatigue and will guarantee safety for the participant.
- **Athletica** passes ASTM F2772/ASTM F2569. Level Classification C2



BALL REBOUND - PLAYABILITY

ASTM F2117: Standard Test Method for Vertical Rebound Characteristics of Sports Surface/Ball Systems

1. Significance and Use

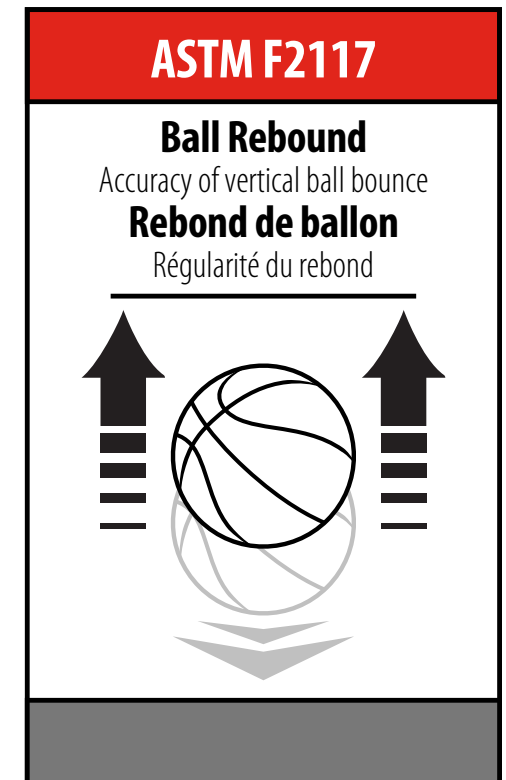
- The ball surface interaction is just one of the important properties of a sports surface. It may be an indicator of the playability or suitability of the surface.

2. Scope

- This test method covers the quantitative measurement and normalization of the vertical rebound produced during impacts between athletic balls and athletic surfaces.

3. What you should know

- Playability is ball return our bounce. Must be $\geq 90\%$ when compared to concrete. Insures safety and constant ball rebound all across the whole surface of the floor.
- **Athletica** passes ASTM F2772/ASTM F2117. Level Classification C2



VERTICAL DEFORMATION - CONSISTENCY

ASTM F2157: Standard Specification for Synthetic Surfaced Running Tracks

1. Significance and Use

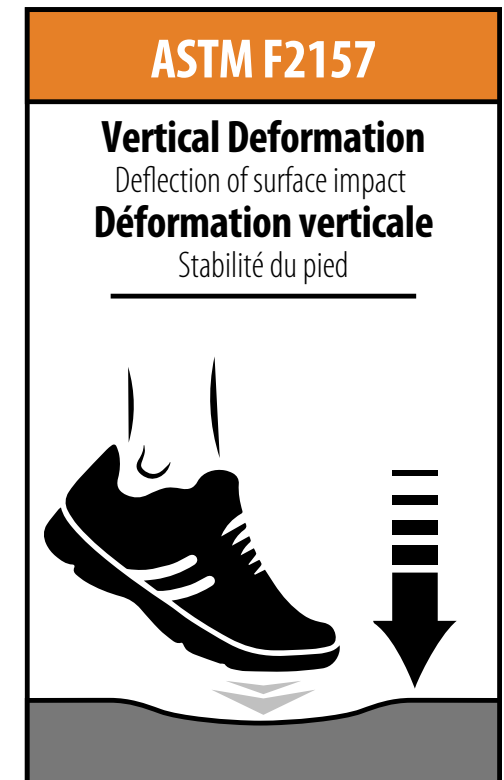
• Test Method F2157 provides a nondestructive means that can be used both in the laboratory and the field by which to identify vertical deformation as the ability of the surface to deform under load. Too high a deformation can affect the safety of the athlete through instability of the foot, while the inability of the surface to deform can cause injuries as a result of impact forces.

2. Scope

• This specification establishes the minimum performance requirements and classification when tested in accordance with the procedures outlined within this specification. All documents referencing this specification must include classification required. Requirements < 3.5 mm.

3. What you should know

- Vertical deformation: consistency of foot stability, the floor compressing downward at impact and the area created by the impact. It prepares muscles for energy return and enabling participants to deflect the floor while isolating their impact from other participants across the whole floor surface.
- **Athletica** passes ASTM F2772/ASTM F2157. Level Classification C2



SURFACE FRICTION - FRICTIONAL PROPERTIES

ASTM E303: Standard Test Method for Measuring Surface Frictional Properties Using the British Pendulum Tester

1. Significance and Use

- This test method provides a measure of a frictional property , micro-texture of surfaces, either in the field or in the laboratory.
 - This test method may be used to determine the relative effects of various polishing processes on materials or material combinations.
- Requirements 80 to 110 BPN (Newton)

2. Scope

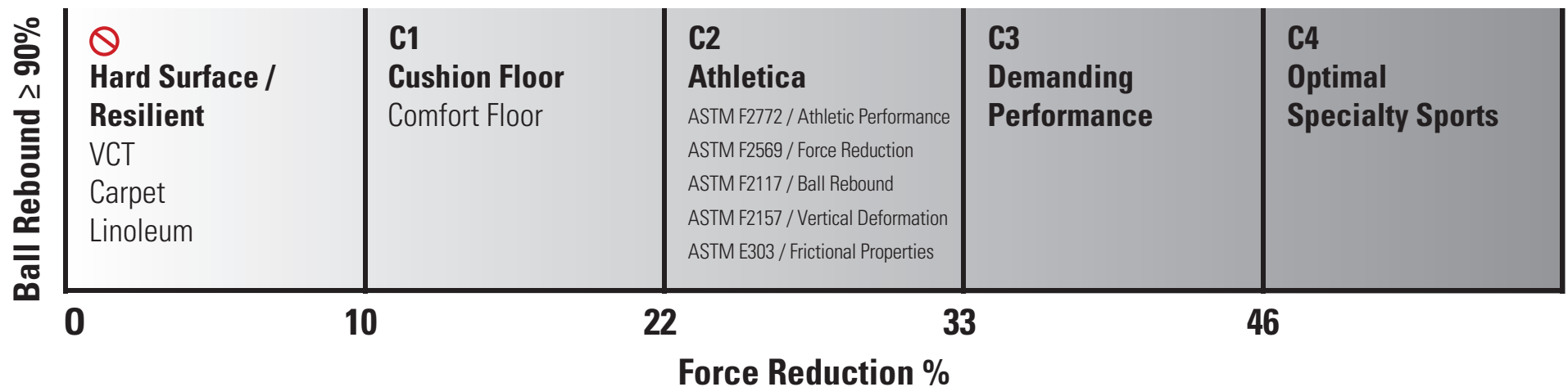
- This test method covers the procedure for measuring surface frictional properties using the British pendulum skid resistance tester.

3. What you should know

- Frictional properties: PUR/UV surface grip and slide characteristics for multi directional movements you need an acceptable range of coefficient of friction in all direction, to protect against foot, ankle and knee injuries.
- **Athletica** passes ASTM F2772/ASTM E303. Level Classification C2



UNDERSTANDING PERFORMANCE LEVEL CLASSIFICATIONS



ATHLETICA - Combination of...

- Force Reduction • Ball Rebound • Vertical Deformation • Frictional Properties

STRIKE ZONE! - ASTM STANDARDS



Level Classification 2 / Niveau Classification 2

ASTM F2772: Standard Specification for Athletic Performance Properties of Indoor Sports Floor Systems.

ASTM F2772: Spécification standard pour les propriétés de performances athlétiques de système de plancher pour sports d'intérieur.

- 1** **ASTM F2117 | "FASTBALL"**
BALL REBOUND / REBOND DE BALLON
Accuracy of vertical ball bounce / Régularité du rebond
- 2** **ASTM F2157 | "CURVEBALL"**
VERTICAL DEFORMATION / DEFORMATION VERTICALE
Deflection of surface impact / Stabilité du pied
- 3** **ASTM E303 | "SLIDER"**
SURFACE FRICTION / ADHERENCE
Resistance to sliding on impact / Arrêts et départs
- 4** **ASTM F2569 | "CHANGE-UP"**
SHOCK ABSORPTION / ABSORPTION DE CHOCS
Ability to reduce impact / Réduit la force d'impact

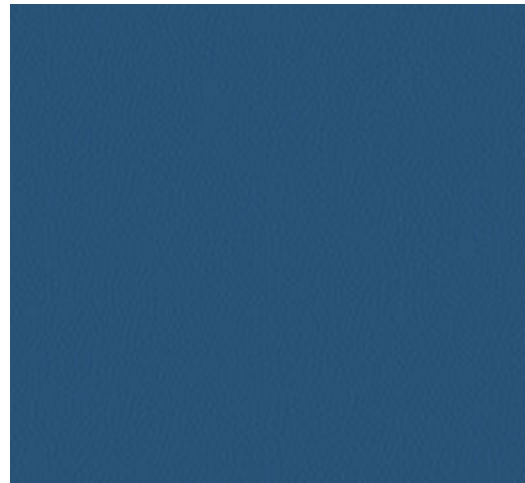
COLOUR SELECTION

***Coordinating 4 mm welding rods with all flooring colours**



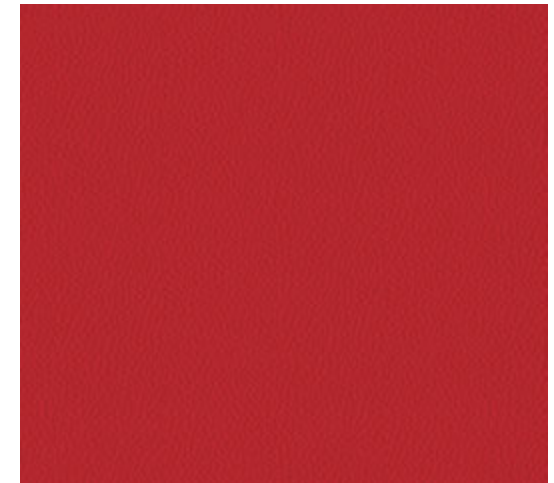
HONEY MAPLE / ATH-01

WR-01



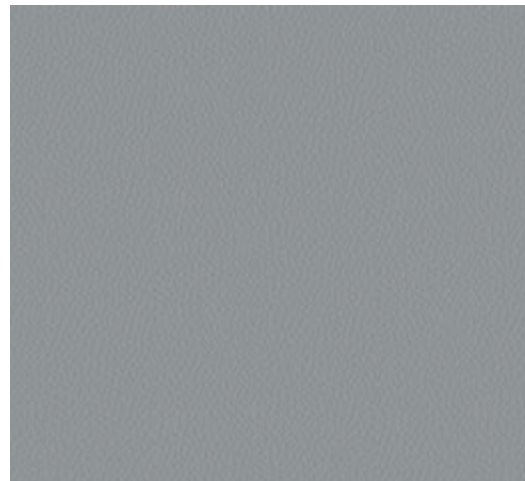
ROYAL BLUE / ATH-02

WR-02



CHERRY RED / ATH-03

WR-03



SILVER GREY / ATH-04

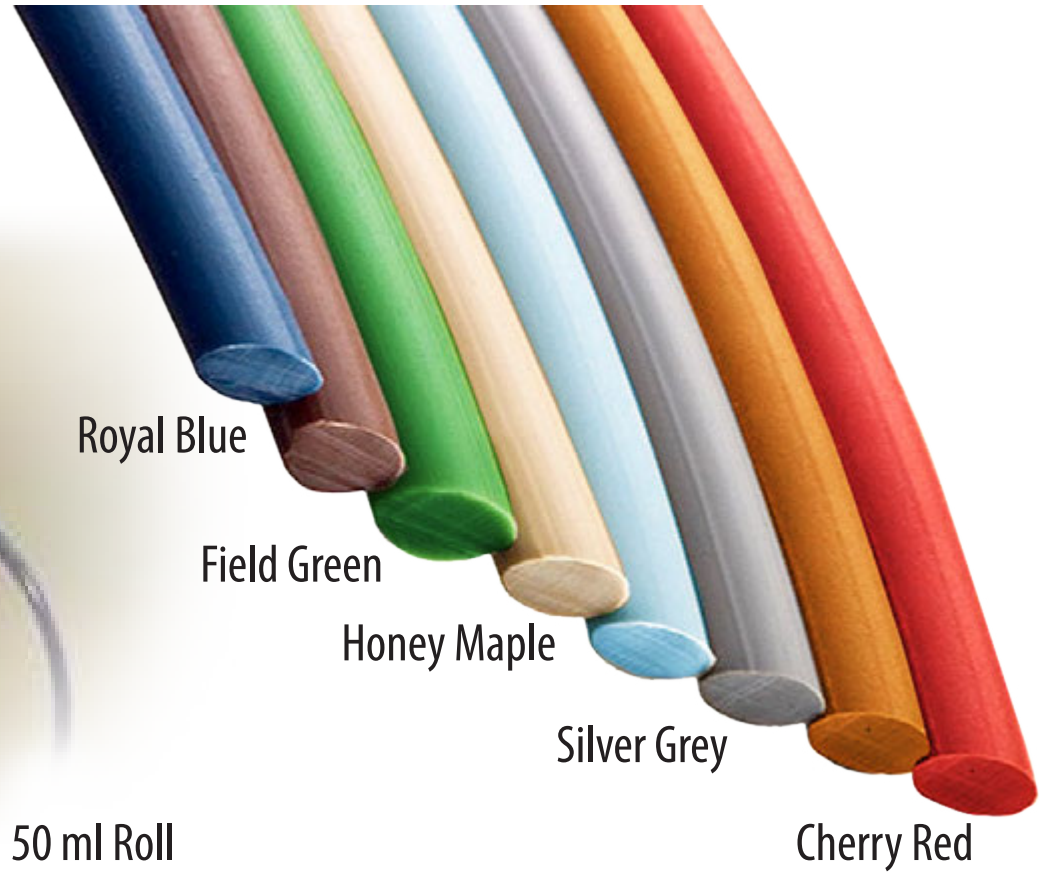
WR-04



FIELD GREEN / ATH-05

WR-05

COORDINATING 4 MM WELDING RODS



GROOVING THE WEAR LAYER



Sports TURBO Groover



GAME LINES



Red



Basketball



Black



Badminton



Blue



Volleyball



Yellow



Handball



White



Tennis

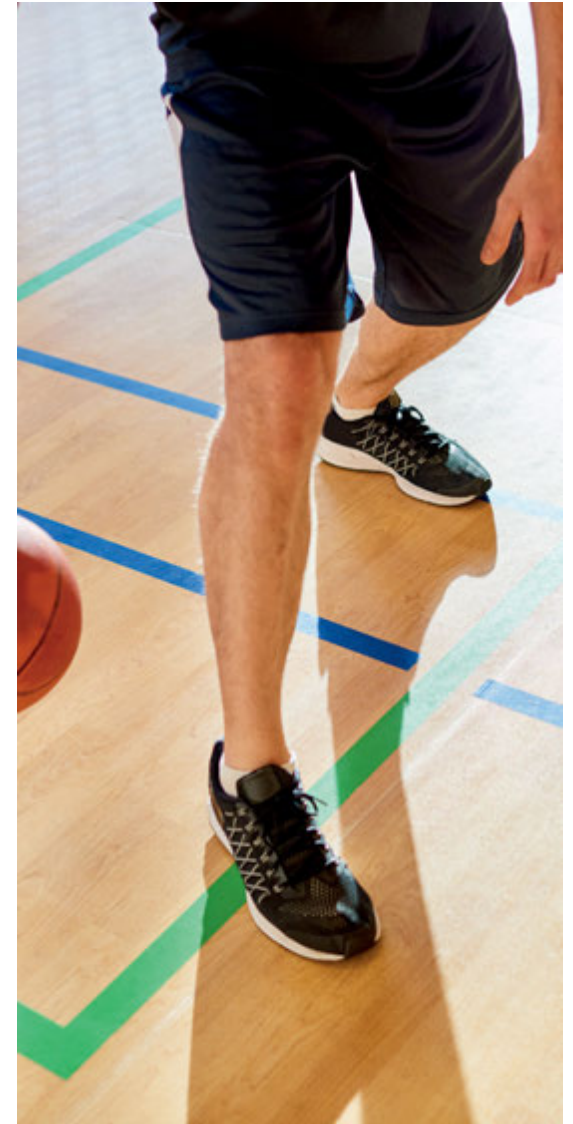


Green



Lateral/Others

Flexible two-part permanent paint



GAME LINES - PAINT

Red / Rouge



POLANE® T : F63TX R5600 - 8716

Navy Blue / Bleu Marin



POLANE® T : F63TX L8800 - 8716

Green / Vert



POLANE® T : F63TX G5598 - 8716

Yellow / Jaune



POLANE® T : F63TX Y0045 - 8716

White / Blanc



POLANE® T : F63TX W5599 - 8716

Black / Noir



POLANE® T : F63TX B5597 - 8716



SHERWIN-WILLIAMS. POLANE® T STORES #

Québec : Store # 8716
11470, Albert-Hudon
Montréal-Nord, Qc
H1G 3J6
Tél. : 514 326-1150
Email : swp8716@sherwin.com

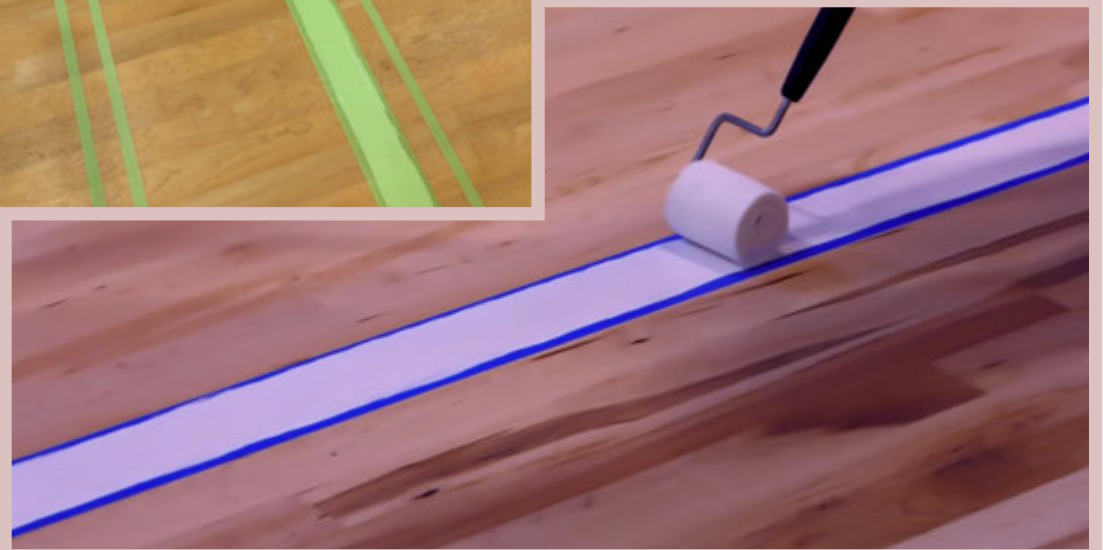
Ontario : Store # 8703
130, Van Kirk Drive
Brampton, On
L7A 1B1
Tél. : 905 840-3010

Manitoba : Store # 8737
32, Beghin Ave
Winnipeg, Mb
R2J 3Z9
Tél. : 204 779-4435

Alberta : Store # 8739
3230, 9th ST SE
Calgary, Ab
T2G 3C3
Tél. : 403 236-2075

British-Columbia : Store # 8718
26596, Gloucester Way
Langley, Bc
V4W 4A8
Tél. : 604 856-3870

GAME LINES



GYMNASIUM



- **SAFETY**
- **PLAYABILITY**
- **STAIN RESISTANCE**
- **EASY TO MAINTAIN**

- **PRIMARY SCHOOL**
- **PRIVATE SCHOOL**
- **COLLEGE**
- **UNIVERSITY**



KINDERGARTEN AND COMMUNITY CENTERS



- **WARMTH**
- **COMFORT**
- **STAIN RESISTANCE**
- **EASY TO MAINTAIN**

- **CHURCH**
- **COMMUNITY HALL**
- **MEETING PLACES**

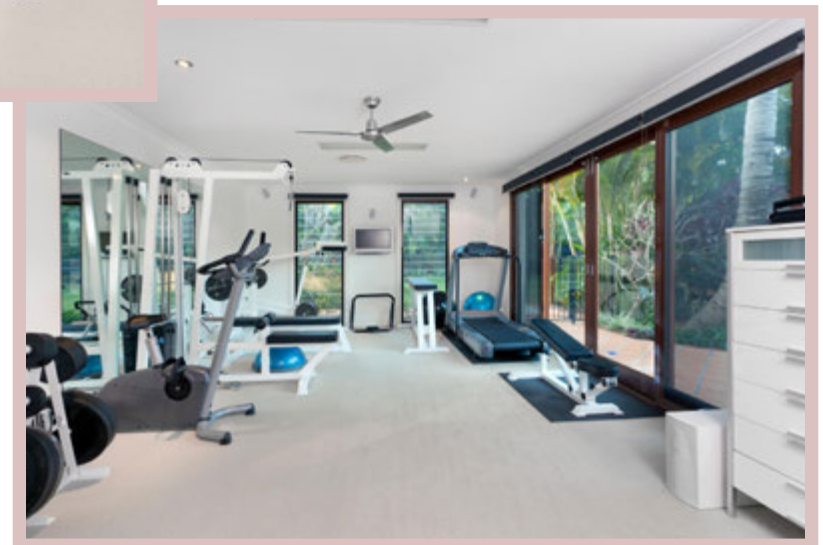


EXERCISE ROOMS AND REHABILITATION CENTERS



- PRIVATE HOME
- YOGA
- RETIREMENT HOME

- HOTEL
- CONDO
- APARTMENT
- HOSPITALS
- CLINICS
- NURSING HOME



SUCCESS - THANK YOU!

