

Design Vinyl Sheet

eternal[®]
eternal[®] NEXT
wood | material | colour



creating better environments

forbo
FLOORING SYSTEMS



ETERNAL NEXT

LOOSE LAY SHEET SOLUTION

In this book a selection of items is also available in a loose lay solution, recognizable by the Eternal Next icon underneath the sample.

The benefits of Eternal Next:

- Completely adhesive free
- Easy installation
- Minimum downtime of the location
- Easy to remove, replace, and recycle at end of life

An overview of the items available as loose lay solution is also displayed on the back of the sample book.

Please ask your local contact for details or visit our website:
www.forbo-flooring.com/eternalnext





eternal[®]

Expertise and heritage in design vinyl sheet flooring

Experience the unparalleled quality of wood and material design flooring, crafted to look as good as or even better than their natural counterparts. Our enduring designs add a timeless appeal to any interior, whilst the proven surface finish ensures durability and exceptional protection against scuffs and scratches, keeping your space looking great for years to come.

Choose Eternal Design Vinyl for outstanding quality and thoughtful design, elevating any space with unmatched beauty and durability.

EXPERTISE IN DESIGN

- Crafted to offer timeless, stylish aesthetics for any project.
- State of the art designs, including extensive possibilities to make combinations within the collection.
- Realistic wood and stone designs, expertly designed to rival the beauty of their natural counterparts.
- Co-ordinated design offer with Modul'up loose lay, Step safety flooring and other Forbo Flooring ranges.
- Multiple finishes tailored for varied effects, all delivering exceptional performance:
 - PUR Pearl: A consistent, natural look with easiest cleaning properties.
 - PUR Satin: An extra matte finish.
 - PUR Wood: An authentic wood-like appearance.

EXPERTISE IN PERFORMANCE

- The ultimate worry-free flooring solution, delivering high quality performance for decades.
- Market-leading minimal residual indentation, thanks to balanced product construction.
- Exceptional protection against scuffs and scratches with Forbo's advanced PUR Pearl lacquering and embossing techniques.
- Easy to handle during installation and remains stable and flat, thanks to Eternal's proven high tech product construction.
- Introducing the innovative Eternal Next construction, leveraging Forbo's expertise in adhesive free solutions for quick and easy installation, reuse, and recycling.

EXPERTISE IN SUSTAINABILITY

- Contains at least 20% recycled content, with all production waste repurposed.
- 100% phthalate-free and designed with the lowest possible emission levels.
- Produced using 100% renewable green electricity, meeting all relevant quality and environmental standards.
- Micro-embossing technology minimises the need for chemical cleaning, extending the floor's lifespan.
- Pairing Eternal with Coral and Nuway entrance systems, the lifetime of the floor will increase substantially.

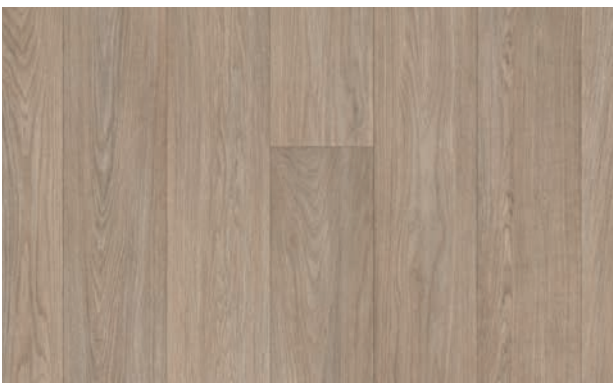


27852 | clear smooth oak



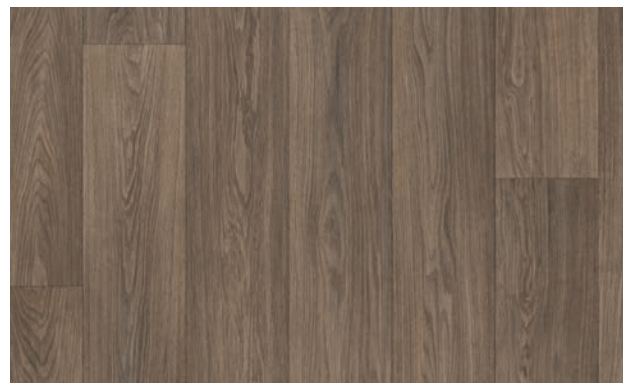
27852 | clear smooth oak
627852 | clear smooth oak eternal®NEXT

LRV 33%



27862 | golden smooth oak
627862 | golden smooth oak eternal®NEXT

LRV 28%



27872 | dark smooth oak

LRV 20%





13922 | bleached timber

LRV 36%



13802 | blond timber

LRV 26%



13942 | classic timber

LRV 22%

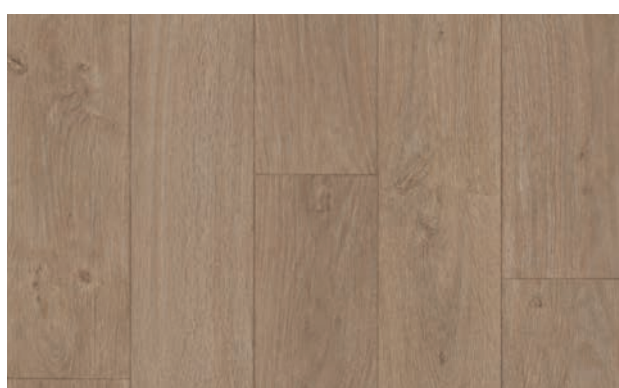


42562 | ochre **13942** | classic timber



12802 | elegant oak
612802 | elegant oak **eternal[®]NEXT**

LRV 32%



12832 | natural oak

LRV 27%



12862 | grey oak

LRV 25%



13412 | shadow oak
613412 | shadow oak **eternal[®]NEXT**

LRV 20%



10362 | warm chestnut
610362 | warm chestnut **eternal[®]NEXT**

LRV 17%





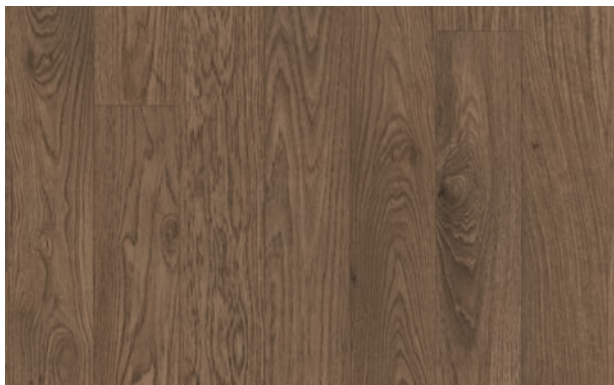






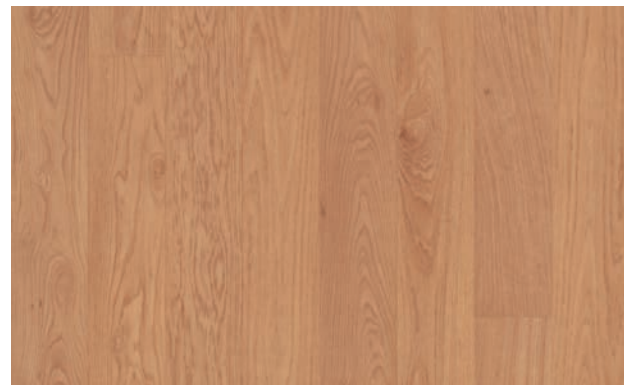
11572 | limed oak

LRV 32%



11582 | amber oak

LRV 17%



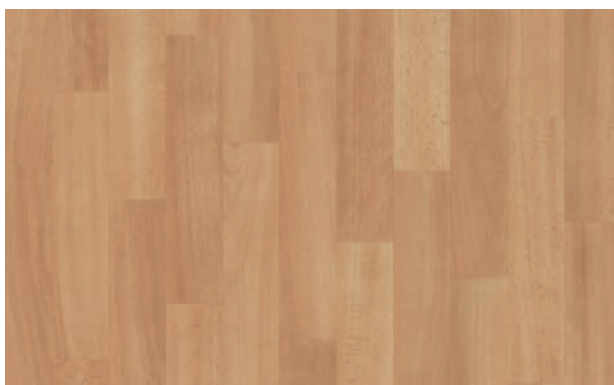
11542 | traditional oak

LRV 22%



10232 | dark walnut

LRV 18%



11442 | washed beech

LRV 28%



11162 | tropical beech

LRV 27%





10842 | cream oak

LRV 44%



10832 | hazelnut oak

LRV 21%

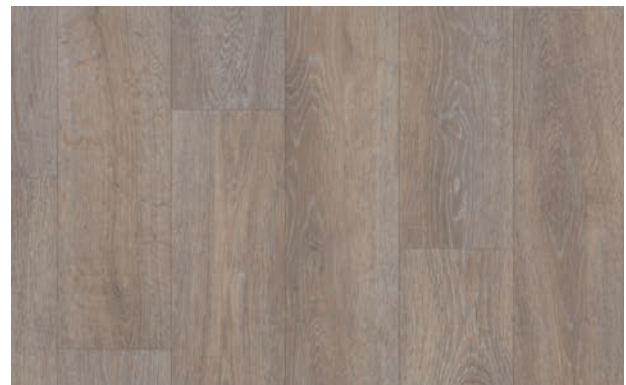


10852 | chocolate oak

LRV 17%



11652 | vintage oak



11652 | vintage oak

LRV 26%



11632 | light oak

LRV 31%



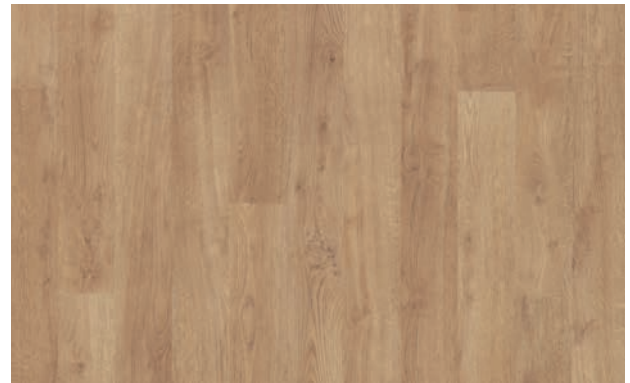


11952 | steamed oak **36932** | natural planks



11982 | blond oak

LRV 40%



11912 | whitewashed oak

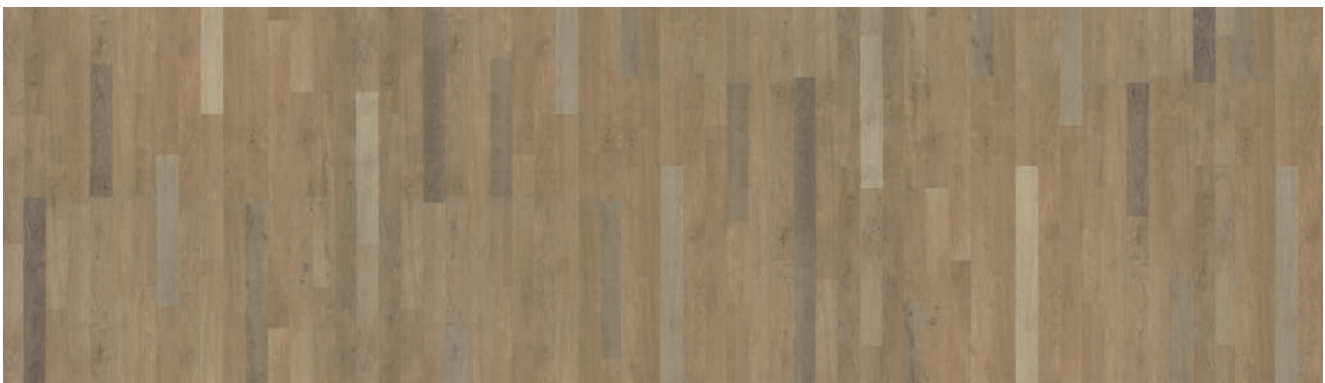
LRV 30%

611912 | whitewashed oak **eternal[®]NEXT**



11952 | steamed oak

LRV 22%



36932 | natural planks

LRV 30%





36202 | light herringbone

LRV 32%



36022 | classic herringbone

LRV 21%



36202 | light herringbone 42612 | elegance blush

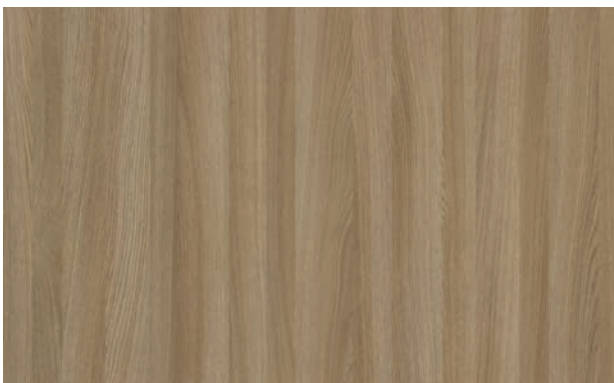


27162 | brown infinite oak **27142** | pale infinite oak



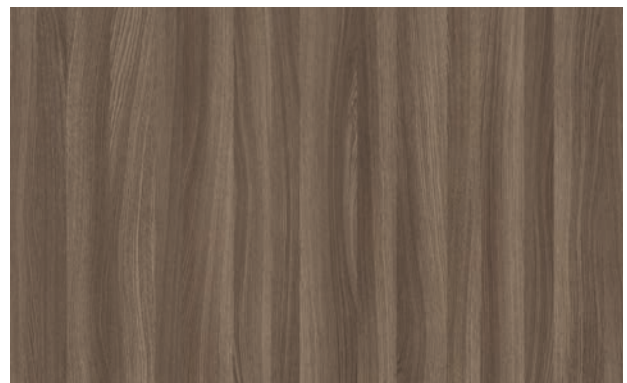
27142 | pale infinite oak

LRV 37%



27152 | warm infinite oak

LRV 26%



27162 | brown infinite oak

LRV 14%









36692 | travertin LRV 42%



10032 | fossil stucco LRV 34%
610032 | fossil stucco **eternal®NEXT**



10012 | pebble stucco LRV 18%



36702 | travertin prism LRV 38%



10042 | graphite stucco LRV 22%
610042 | graphite stucco **eternal®NEXT**



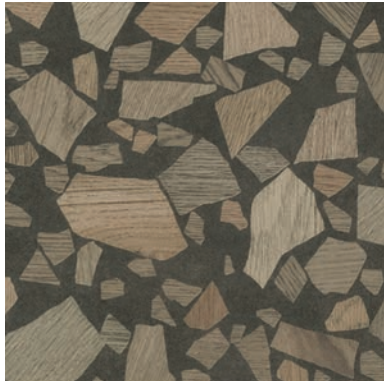
36692 | travertin **36702** | travertin prism



36962 | wooddark prism 36642 | oak wood mix



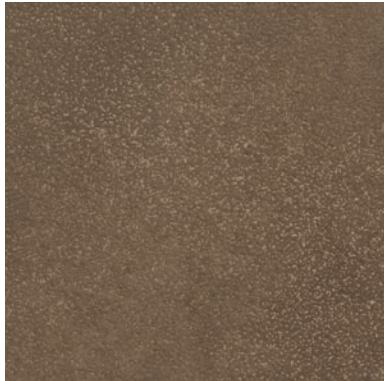
36642 | oak wood mix LRV 51%



36322 | terra wood mix LRV 19%



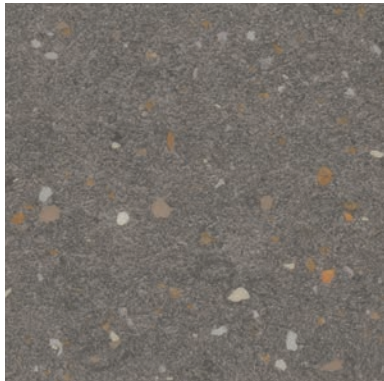
36952 | woodlight prism LRV 34%



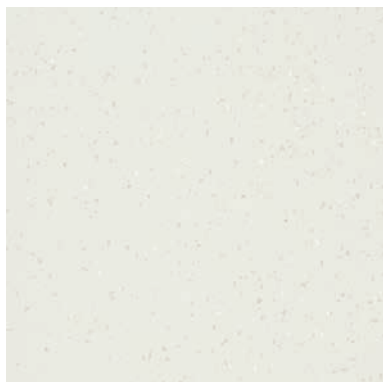
13202 | rust speckled ceramic LRV 15%



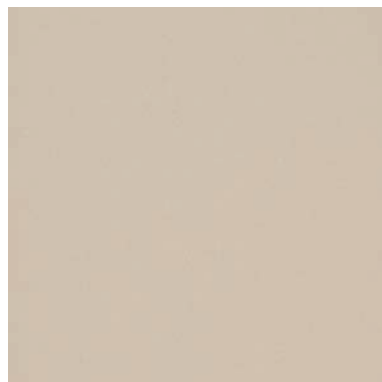
36962 | wooddark prism LRV 18%



36672 | dusk pebble LRV 18%



42412 | elegance linen LRV 69%



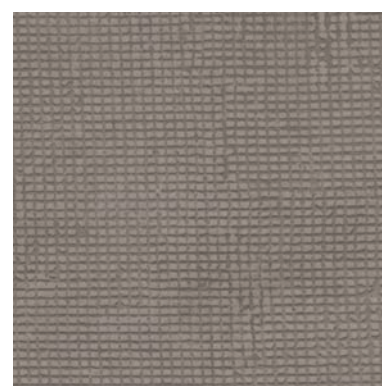
42442 | limestone LRV 49%



42462 | elegance fossil LRV 30%



13212 | taupe speckled ceramic **13282** | taupe grid **4910** | bronze arc



13282 | taupe grid LRV 22%



13212 | taupe speckled ceramic LRV 29%
613212 | taupe speckled ceramic **eternal®NEXT**



12472 | mortar textured concrete LRV 39%



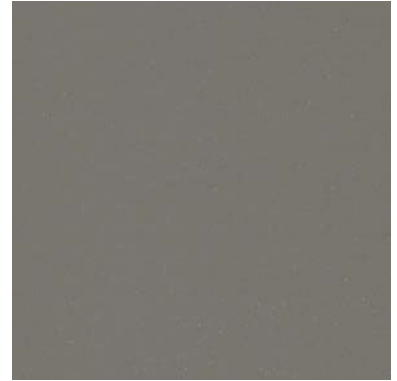
13002 | silver concrete LRV 64%



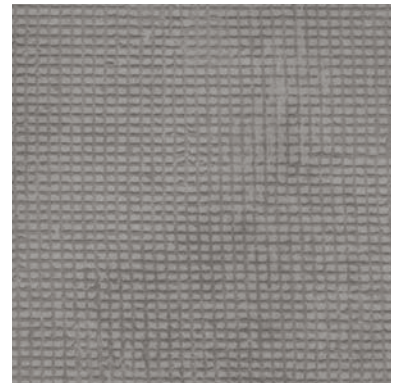
13132 | warm concrete LRV 32%



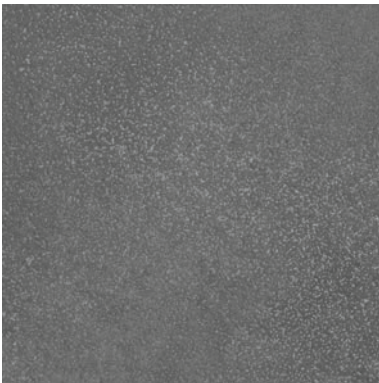
13082 | gravel concrete 13022 | beton concrete



42482 | earth LRV 17%



13262 | smoke grid LRV 25%



13192 | iron speckled ceramic LRV 15%
613192 | iron speckled ceramic eternal®NEXT



13032 | anthracite concrete LRV 11%



11872 | smoke cement LRV 23%



13022 | beton concrete LRV 28%
613022 | beton concrete eternal®NEXT



13082 | gravel concrete LRV 16%
613082 | gravel concrete eternal®NEXT



11842 | iron cement LRV 16%



42402 | elegance snow LRV 76%



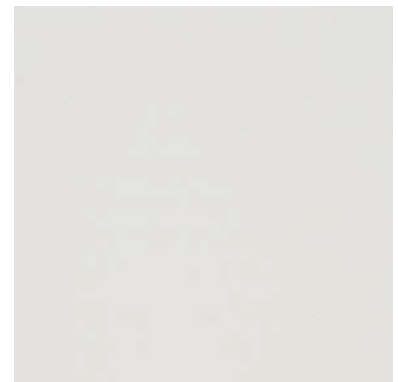
42452 | greige LRV 38%



42472 | elephant LRV 19%



36682 | dawn pebble **13202** | rust speckled ceramic



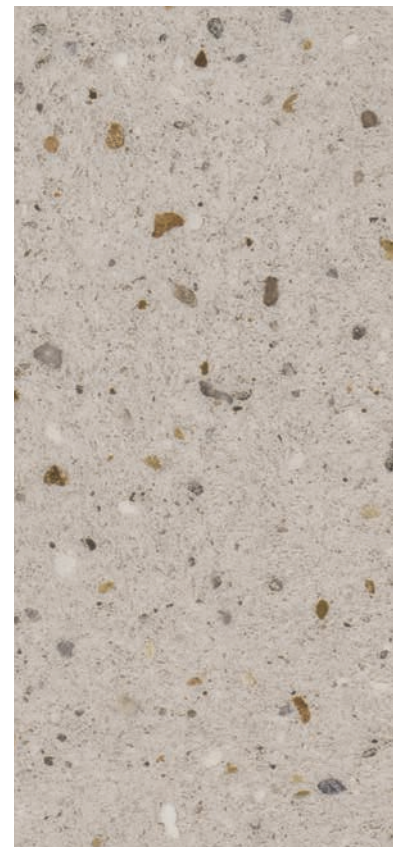
42432 | silt LRV 62%



11862 | grey cement LRV 28%



11832 | light cement LRV 37%



36682 | dawn pebble LRV 51%





36612 | denim wood mix 12232 | sapphire stone



42522 | elegance trout LRV 52%



42542 | grey lavender LRV 21%



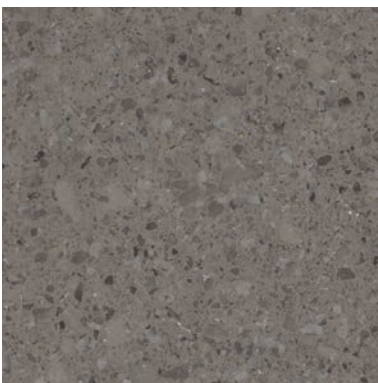
36612 | denim wood mix

LRV 48%



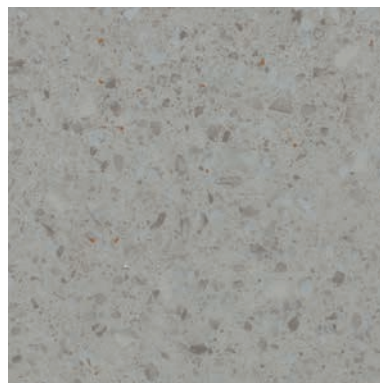
42572 | steel

LRV 10%



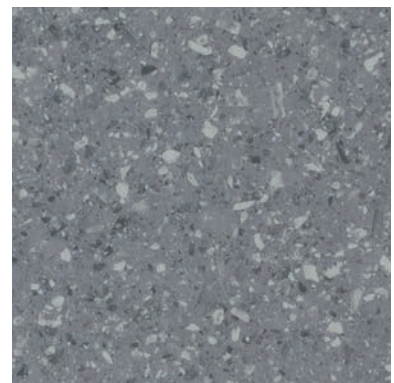
12012 | quartz stone

LRV 20%



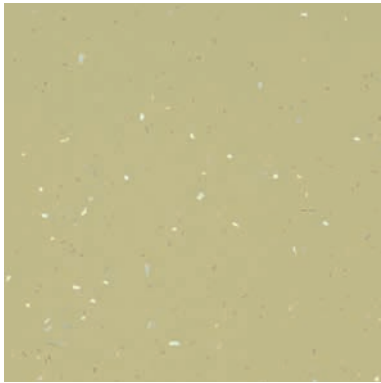
12092 | neutral stone

LRV 35%



12232 | sapphire stone

LRV 22%



42512 | elegance willow LRV 42%



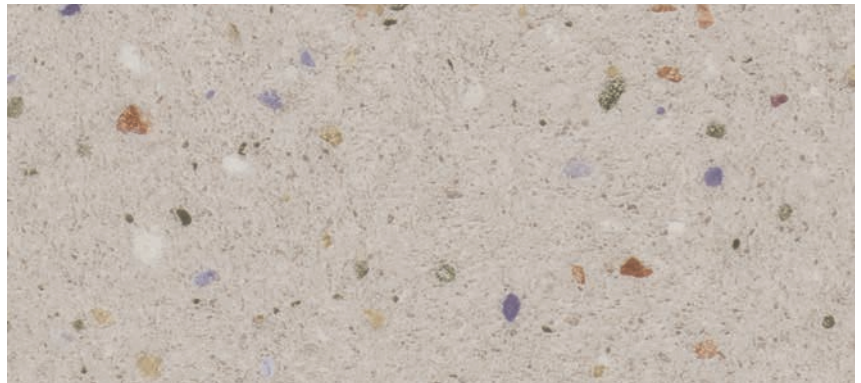
42532 | elegance daffodil LRV 58%



42562 | ochre LRV 31%



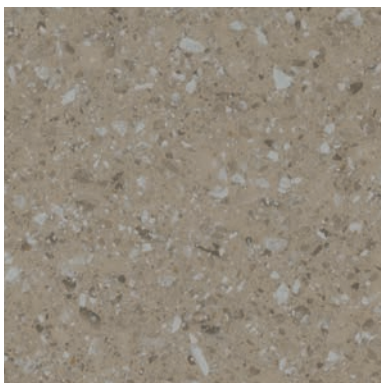
42492 | sage LRV 30%



36652 | blossom pebble LRV 48%



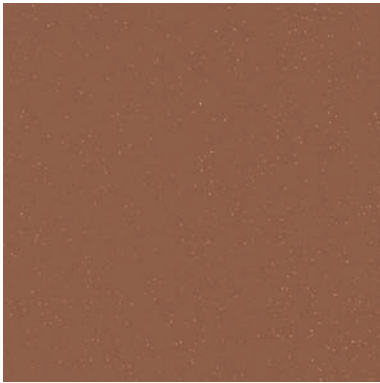
42552 | bottle green LRV 15%



12242 | emerald stone LRV 28%



36652 | blossom pebble **42532** | elegance daffodil **42512** | elegance willow



42592 | grey terra LRV 14%



42612 | elegance blush LRV 31%



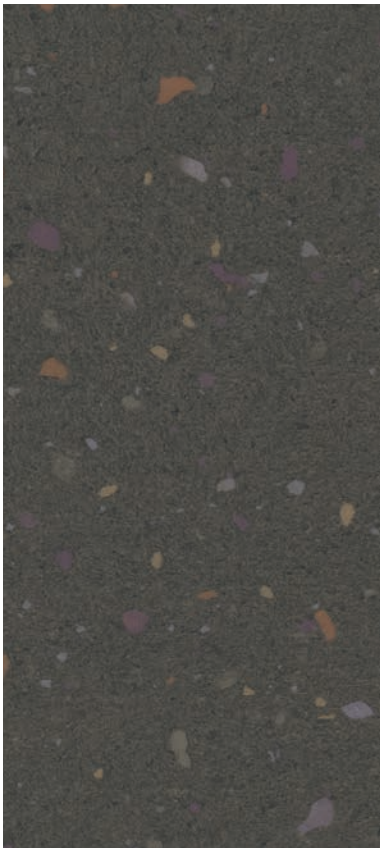
42422 | salmon LRV 38%



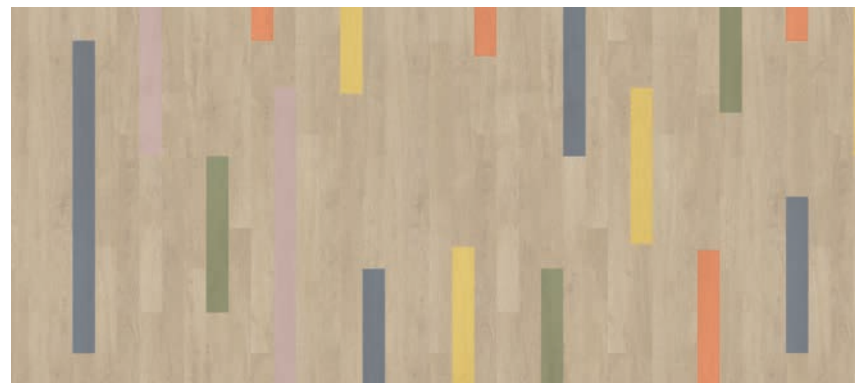
42602 | elegance soft lilac LRV 38%



42602 | elegance soft lilac **36942** | colourful planks



36662 | aurora pebble LRV 15%



36942 | colourful planks

LRV 41%



Eternal loose lay sheet solution

Eternal Next is an innovative floorcovering designed for adhesive free installation, dramatically reducing installation time and minimising disruption. Making no compromise on the known quality of Eternal.

Supporting circularity, Eternal Next can be easily uplifted for reuse or recycling at the end of its useful life. Its adhesive free nature ensures that no damage is left on the subfloor.

All designs on this page are available in our Eternal Next construction.

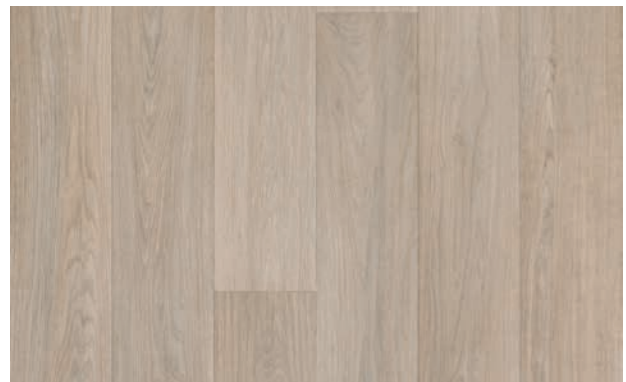
THE BENEFITS OF ETERNAL NEXT:

- True loose lay solution
- Quick and easy installation
- Minimal disruption and downtime
- Can be walked on immediately after installation
- No adhesive needed, eliminating lingering odours
- Remains stable and flat during use and cleaning
- 24% recycled content (mass)
- 100% phthalate-free and low VOC's
- Easy to uplift for reuse and recycling
- Part of Forbo's wider Fast Flooring collection
- 8 items with proven PUR Pearl for optimal durability
- 4 items with PUR Satin for an exceptionally matt finish



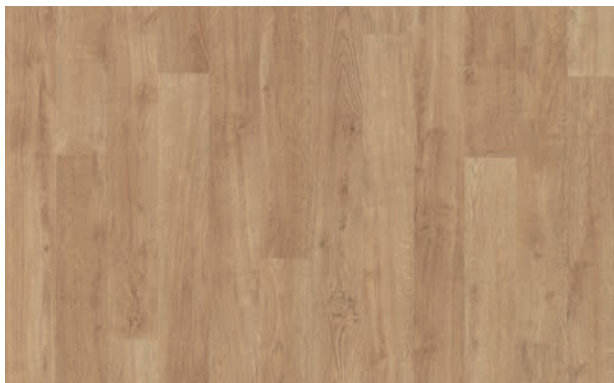
612802 | elegant oak

LRV 32%



627852 | clear smooth oak*

LRV 33%



611912 | whitewashed oak

LRV 30%



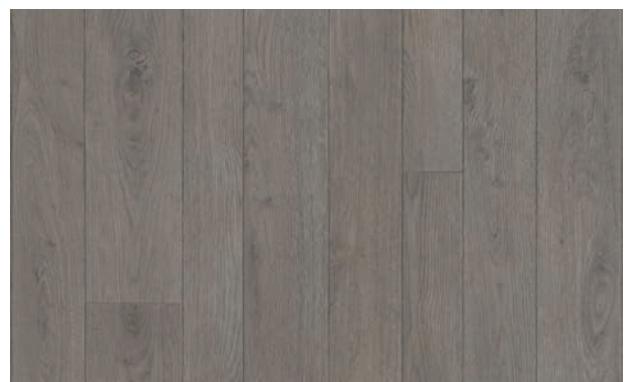
627862 | golden smooth oak*

LRV 28%



610362 | warm chestnut

LRV 17%



613412 | shadow oak

LRV 20%



610032 | fossil stucco



610032 | fossil stucco LRV 34%



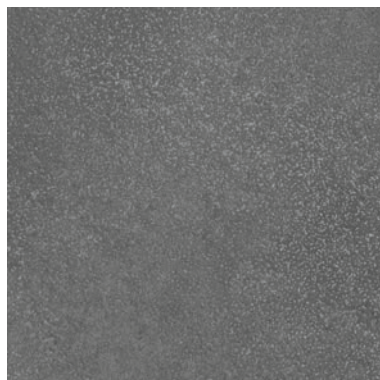
613212 | taupe speckled ceramic* LRV 29%



613022 | beton concrete LRV 28%



610042 | graphite stucco LRV 22%



613192 | iron speckled ceramic* LRV 15%



613082 | gravel concrete LRV 16%







Technical specifications

Eternal meets the requirements of EN ISO 10582

| | | Eternal | Eternal Next | |
|--|--|----------------------------|---|----------------------------|
| | Total thickness | EN ISO 24346 | 2.0 mm | 2.5 mm |
| | Surface finish | | PUR Pearl / Satin / Wood | PUR Pearl / Satin |
| | Wear layer thickness | EN ISO 24340 | 0.70 mm | 0.70 mm |
| | Wear layer binder content | EN ISO 10582 | Type 1 | Type 1 |
| | Collection size | | 85 | 12 |
| | Domestic use | EN ISO 10874 | Class 23 | Class 23 |
| | Commercial use | EN ISO 10874 | Class 34 | Class 34 |
| | Light industrial use | EN ISO 10874 | Class 43 | Class 43 |
| | Roll width | EN ISO 24341 | 2.0 m | 2.0 m |
| | Roll length | EN ISO 24341 | ≤ 25 m | ≤ 25 m |
| | Total weight | EN ISO 23997 | 2800 g/m ² | 3600 g/m ² |
| | Dimensional stability | EN ISO 23999 | ≤ 0.1 % | ≤ 0.05 % |
| | Slip resistance (ramp test) | DIN 51130 | R10 | R10 |
| | Castor chair continuous use | ISO 4918 | Pass | Pass |
| | Residual indentation <i>Typical value</i> | EN ISO 24343-1 | ≤ 0.05 mm ~ 0.02 mm | ≤ 0.10 mm ~ 0.04 mm |
| | Colour fastness to light | EN ISO 105-B02 method 3 | ≥ 6 | ≥ 6 |
| | Indoor air emissions: TVOC after 28 days | ISO 16516 | ≤ 0.02 mg/m ³ | ≤ 0.01 mg/m ³ |
| | Resistance to chemicals | EN ISO 26987 | Very good | Very good |
| | Flexibility | EN ISO 24344 | Ø 10 mm | Ø 10 mm |
| | Life Cycle Assessment | | LCA is the foundation for securing the lowest environmental impact | |
| | Creating better environments | | | |
| | Renewable electricity | | Eternal is manufactured using 100% electricity from renewable sources | |
| | Recycled content (mass) | | 30.5% | 24% |
| | | | | |
| | Eternal meets the requirements of EN 14041 | | | |
| | Reaction to fire | EN 13501-1 | B _{f1} -s1, L, CS | B _{f1} -s1, L, CS |
| | Slip resistance | EN 13893 | μ ≥ 0.30 | μ ≥ 0.30 |
| | Thermal conductivity | EN 12524 | 0.25 W/mK | 0.25 W/mK |
| | Body voltage | EN 1815 | ≤ 2.0 kV | ≤ 2.0 kV |

All Forbo Flooring Systems' sales organisations worldwide have a certified Quality Management System in accordance with ISO 9001.

All Forbo Flooring Systems' manufacturing operations have a certified Environmental Management System in accordance with ISO 14001.

The Life Cycle Assessment (LCA) of Forbo Flooring Systems' products is documented in individual Environmental Product Declarations (EPD's) which can be found on all of our websites.



Belgium

Forbo Flooring
t Hofveld 4B 001
BE-1702 Groot-Bijgaarden
Tel + 32 2 464 10 10
Fax: + 32 2 464 10 11
Email Info.belgium@forbo.com
www.forbo-flooring.be

Danmark

Produktionsvej 14
2600 Glostrup
T: 44 92 85 00
info.denmark@forbo.com
www.forbo-flooring.dk

Finland

Heikkiläntie 2, 4 krs
00210 Helsinki
Puhelin +358 (0)9 862 30 300
info.finland@forbo.com
www.forbo-flooring.fi

Poland

ul. Jeleniogorska 16
60-179 Poznań
Tel.: +48 (61) 862 13 82
E-mail: info.pl@forbo.com
www.forbo-flooring.pl

Portugal

Zona Industrial da Maia I, Sector VII
Tv. Eng. Nobre da Costa, 87
Apartado 6091
4476-908 Maia
T: +351 229 996 900
F: +351 229 996 909
info.revestimentos@forbo.com
www.forbo-flooring.com.pt

Other countries

Forbo Flooring B.V.
P.O. Box 13
1560 AA Krommenie
The Netherlands
T: +31 75 647 74 77
question@forbo.com
www.forbo-flooring.com

Find us on



creating better environments



FLOORING SYSTEMS