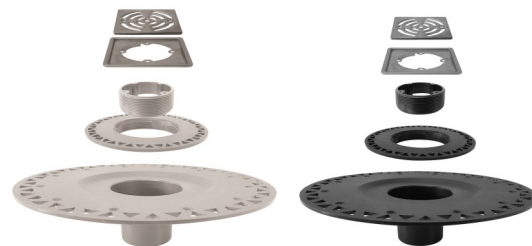


# PROVA DRAIN®



PROVA DRAIN® is an easy-to-install drain system for tiled showers. PROVA DRAIN® comes in ABS or PVC materials for providing an easy connection to drain piping, and it can be used for PROVA PAN®, PROVA PAN-MULTI®, and mortar bases.



## Dimensions and Part Numbers

- ABS PROVA DRAIN® (TT8007)
- PVC PROVA DRAIN® (TT8107)
- PROVA DRAIN GRATE® (TT8014)
- **Diameter:** 12" (ABS and PVC)
- **Height:** 3.5" (ABS and PVC)
- 4" x 4"

## Technical Information

Property	Information
Product Standard	Drains meet requirements of ASME A112.18.2-2015/CSA B125.2-15
Material Construction	Drain body, height adjustment collar, grate housing: ABS Drain body, height adjustment collar, grate housing: PVC Drain grate and grate base: stainless steel AISI 304
Points of Adjustment	Height adjustment collar offers the ability to make vertical and side-to-side adjustments to the grate components.
Drain Outlet Connection	Connects to standard 2" drain outlets, and the adjustable grate accommodates all common tile thicknesses
Adhesion	Utilizes pre-applied PROVA-BOND™ Surface Treatment for better adhesion between drain, mortar, and pan
Weight	1.07 lb./0.49 kg (ABS and PVC)
Storage Temperature	-4°F to 167°F (-20°C to 75°C)
Chemical Resistance	Avoid contact with strong acids
Grate Finishes	Stainless Steel, Brass, Bronze, Chrome, Graphite

