

I.D. Inspiration™
LUXURY VINYL TILE (LVT)

+ Design Inspiration
with Millwork® Masquerade® Wall Base





ID70: **24201003** ID55: **24231003**

Antik Oak Plank | *Dark Grey WG*

ID70: **24201108** ID55: **24231108**

Patina Ash Plank | *Grey WG*

ID70: **24201111** ID55: **24231111**

Contemporary Oak Plank | *Natural WB*

SUGGESTED MILLWORK MASQUERADE PAIRING:

3545 TexGrain Charcoal



I.D. Inspiration™

Luxury Vinyl Tile and Plank Flooring

New styles. New colors.

Durability and lifelike design are in I.D. Inspiration's DNA. The newest update to Johnsonite LVT includes 30 colors, 24 plank wood designs from a classically trained European woodworker, and 6 tiles. The 6 new tiles feature all-new designs, bringing abstract, stone and woven patterns to the once all-woods collection. The result is a beautiful floor that remains so for years. An advanced engraving technique provides superior attention to detail for graining, texture and color on color.

The unique surface treatment to the all-new I.D. Inspiration from Johnsonite simplifies routine floor maintenance and reduces the amount of water, energy and cleaning products needed. Additionally, I.D. Inspiration is phthalate-free, contributing to the health of the environment in which it's installed. Especially in spaces where a healthful floor is essential, I.D. Inspiration is an ideal choice because it is FloorScore® certified with TVOC levels $\leq 10\mu\text{g}/\text{m}^3$.

I.D. INSPIRATION 70 (28 mil)

A flooring solution with an exceptionally hard-wearing reinforced polyurethane surface treatment and 28 mil wear layer makes this product one of the most resistant and durable commercial luxury vinyl tile products on the market. I.D. Inspiration 70's construction withstands rolling loads, and its reinforced polyurethane surface treatment provides easy maintenance and superior performance for life.

- Ideal for use in heavy traffic commercial areas such as hospitality, retail, corporate, healthcare, education and other commercial environments in need of durable flooring
- 20-Year Limited Commercial Warranty

I.D. INSPIRATION 55 (20 mil)

A flooring solution with an exceptionally hard-wearing reinforced polyurethane surface treatment and 20 mil wear layer makes this product a highly durable commercial luxury vinyl tile that withstands rolling loads and high traffic areas.

- Ideal for use in commercial areas such as hospitality, retail, corporate, healthcare and education
- 10-Year Limited Commercial Warranty

Millwork® Masquerade® Wall Base

Masquerade is a unique line of Millwork Finishing Borders, built around the virtually limitless possibilities that result from a high-definition, digital imaging technology printed directly on the surface of the wall base.

This brochure is designed to introduce the newest colors and styles of the I.D. Inspiration product line. For further inspiration, you will also see how Johnsonite's Millwork Masquerade wall base can be paired with I.D. Inspiration LVT flooring to complete your ultimate flooring experience.



I.D. Inspiration Planks



ID70: **24201001** ID55: **24231001**
Antik Oak | *Beige WB*



ID70: **24201003** ID55: **24231003**
Antik Oak | *Dark Grey WG*



ID70: **24201007** ID55: **24231007**
Antik Oak | *Anthracite WG*



ID70: **24201008** ID55: **24231008**
Antik Oak | *Middle Grey CB*



ID70: **24201013** ID55: **24231013**
Brushed Pine | *Brown WB*



ID70: **24201024** ID55: **24231024**
English Oak | *Beige CB*



ID70: **24201025** ID55: **24231025**
English Oak | *Brown WB*



ID70: **24201029** ID55: **24231029**
English Oak | *Grey Beige CB*



ID70: **24201092** ID55: **24231092**
Vintage Teak | *Grey CB*



ID70: **24201093** ID55: **24231093**
Vintage Teak | *Natural WB*



ID70: **24201100** ID55: **24231100**
Scandinavian Oak | *Light Beige WB*



ID70: **24201108** ID55: **24231108**
Patina Ash | *Grey WG*



ID70: **24201109** ID55: **24231109**
Contemporary Oak | *Grey CB*



ID70: **24201110** ID55: **24231110**
Contemporary Oak | *Greige CB*



ID70: **24201111** ID55: **24231111**
Contemporary Oak | *Natural WB*



ID70: **24201113** ID55: **24231113**
Elm | *Light Grey W*



ID70: **24201115** ID55: **24231115**
Elm | *Natural WB*



ID70: **24201121** ID55: **24231121**
Rustic Oak | *Stone Brown*



ID70: **24201122** ID55: **24231122**
Rustic Oak | *Dark Grey CB*



ID70: **24201128** ID55: **24231128**
Rustic Oak | *Medium Brown WB*



ID70: **24205009** ID55: **24235009**
Wenge | *Black B*



ID70: **242005010** ID55: **24235010**
Wenge | *Natural*



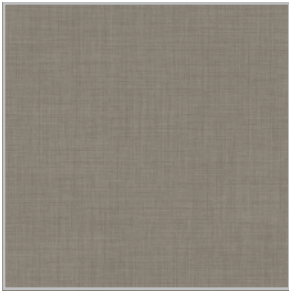
ID70: **24205011** ID55: **24235011**
Wenge | *Grey CG*



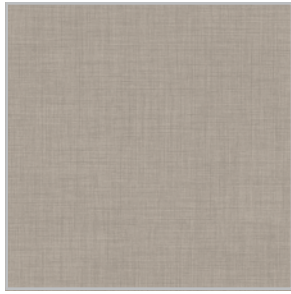
ID70: **24205012** ID55: **24235012**
Wenge | *Greige CB*



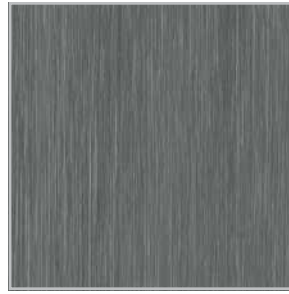
I.D. Inspiration Tiles



ID70: **24207082** ID55: **24237082**
Tisse | *Beige CB*



ID70: **24207084** ID55: **24237084**
Tisse | *Light CB*



ID 70: **24207088** ID55: **24237088**
Trend Line | *Black B*



ID70: **24207090** ID55: **24237090**
Trend Line | *Silver CG*



ID70: **24207094** ID55: **24237094**
Vintage Zinc | *Black B*



ID70: **24207120** ID55: **24237120**
Oxide | *Black Steel CG*

Millwork Masquerade Wall Base



2817 White Oak Classic Espresso

The sophisticated melding of high-end Millwork profiles with cutting-edge HD digital print technology enables you to create nearly limitless visuals, colors and designs on our Masquerade wall base. The end result brings elegance, durability and customization into one with exotic woods, sophisticated stones, abstract designs or even digital imagery.



3513 Concrete Fallow



3519 Concrete Charcoal



3545 TexGrain Charcoal



3555 TexMode Charcoal



4115 MetaStone Ferro



4694 Seasoned Oak Scout



4695 Seasoned Oak Peppercorn



4696 Seasoned Oak Falcon



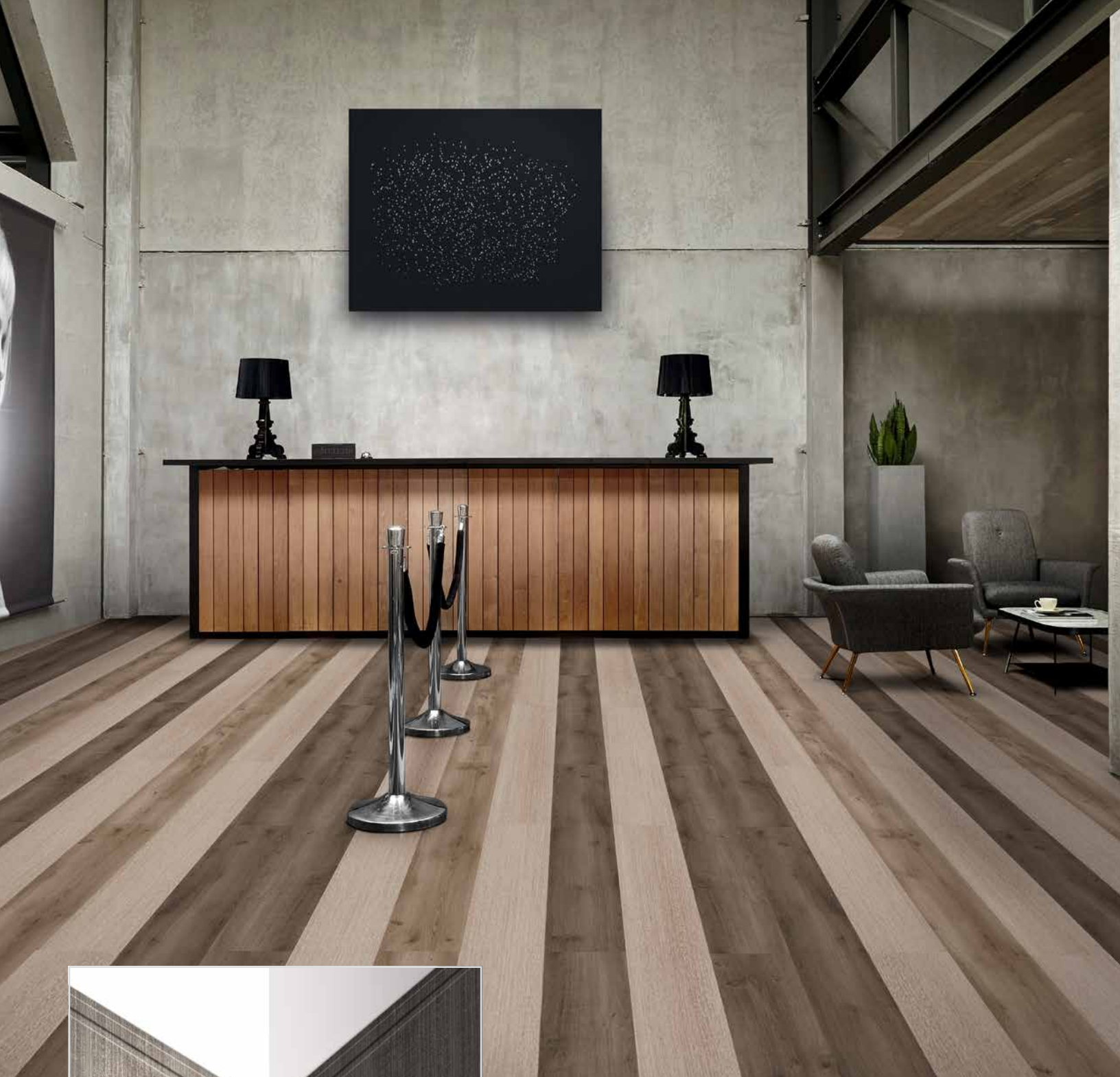
5134 Native Pine Blanched Grey



ID70: 24201003 ID55: 24231003
Antik Oak Plank | *Dark Grey* WG
ID70: 24201024 ID55: 24231024
English Oak Plank | *Beige* CB
ID70: 24201109 ID55: 24231109
Contemporary Oak Plank | *Grey* CB

SUGGESTED MILLWORK MASQUERADE PAIRING:
4115 MetaStone Ferro





ID70: **24205012** ID55: **24235012**
Wenge Plank | *Greige CB*

ID70: **24201121** ID55: **24231121**
Rustic Oak Plank | *Stone Brown*

ID70: **24201122** ID55: **24231122**
Rustic Oak Plank | *Dark Grey CB*

SUGGESTED MILLWORK MASQUERADE PAIRING:
3555 TexMode Charcoal

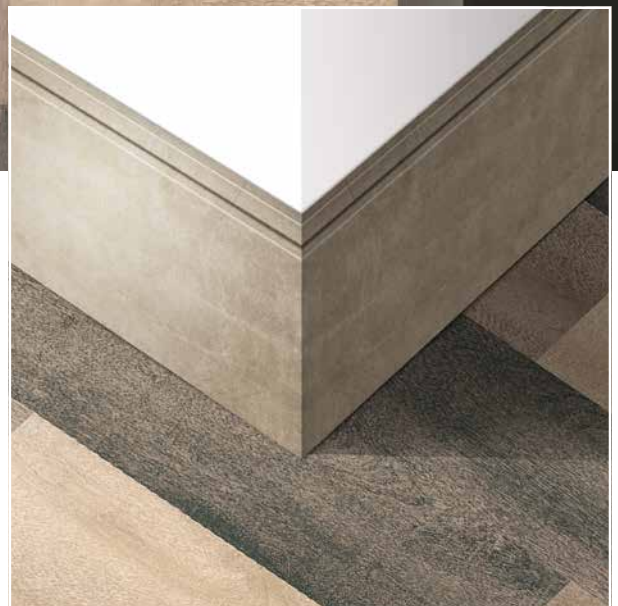


ID70: **24201001** ID55: **24231001**
Antik Oak Plank | *Beige WB*

ID70: **24201007** ID55: **24231007**
Antik Oak Plank | *Anthracite WG*

ID70: **24201008** ID55: **24231008**
Antik Oak Plank | *Middle Grey CB*

SUGGESTED MILLWORK MASQUERADE PAIRING:
3513 Concrete Fallow





menu

Starters

Red Pepper soup	8
Almond, Mint & Ricotta Salad	14
Anchovies on Dried Tomatoes	16
Tuna and Lime Ceviche	16

Entrees

Californian Salmon Tartar	24
Sesame Tuna Steak	28
Fresh cod & Tomatillo Sauce	30
Black Angus Filet & Borsodi purée	34

Desserts

Pineapple Pie & Mango Sorbet	9
Chocolate Mousse Zabaglione	10
Dark Chocolate Miso	12



ID70: 24207120 ID55: 24237120
Oxide Tile | Black Steel B

ID70: 24205009 ID55: 24235009
Wenge Plank | Black B

SUGGESTED MILLWORK MASQUERADE PAIRING:
3545 TexGrain Charcoal





ID70: **24201115** ID55: **24231115**
Elm Plank | *Natural* WB

SUGGESTED MILLWORK MASQUERADE PAIRING:
4694 Seasoned Oak Scout



ID70: **24201092** ID55: **24231092**
 Vintage Teak Plank | Grey CB

ID70: **24207082** ID55: **24237082**
 Tisse Tile | Beige CB

ID70: **24207084** ID55: **24237084**
 Tisse Tile | Light CB

SUGGESTED MILLWORK MASQUERADE PAIRING:
4695 Seasoned Oak Peppercorn





ID70: 24201093 ID55: 24231093

Vintage Teak Plank | *Natural* WB

ID70: 24201025 ID55: 24231025

English Oak Plank | *Brown* WB

ID70: 24205010 ID55: 24235010

Wenge Plank | *Natural*

SUGGESTED MILLWORK MASQUERADE PAIRING:

4115 MetaStone Ferro



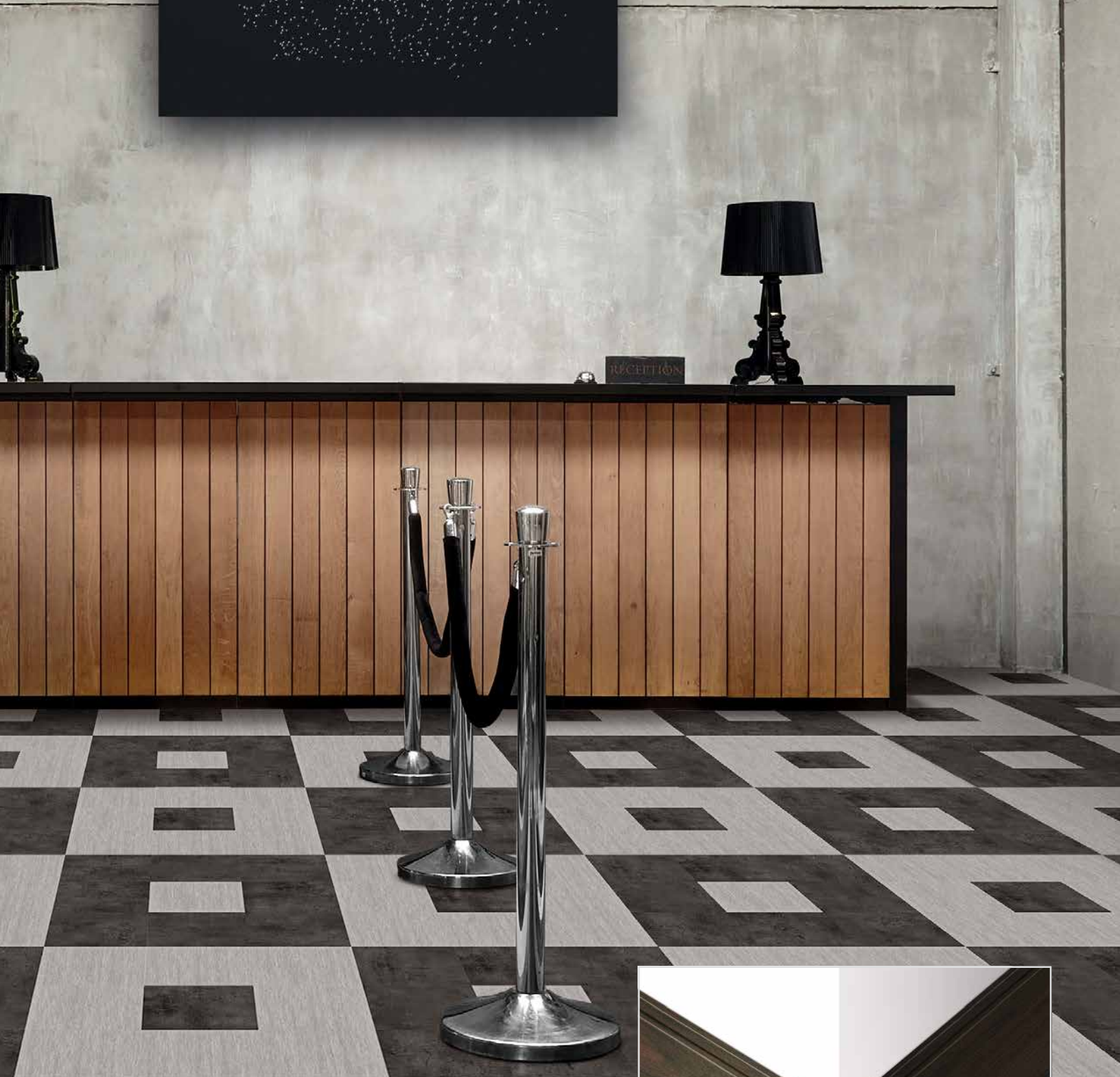
ID70: **24207120** ID55: **24237120**
Oxide Tile | Black Steel B

ID70: **24205009** ID55: **24235009**
Wenge Plank | Black B

SUGGESTED MILLWORK MASQUERADE PAIRING:
3519 Concrete Charcoal







ID70: 24207090 ID55: 24237090
Trend Tile | *Silver CG*

ID70: 24207094 ID55: 24237094
Vintage Zinc Tile | *Black B*

SUGGESTED MILLWORK MASQUERADE PAIRING:
2817 White Oak Classic Espresso



I.D. Inspiration™

Technical Data	Standards	
Type of Floor Covering		Solid Vinyl Tile
Classification	ASTM F1700	Class III Type B
Wear Layer Thickness		ID70: .028" (0.7 mm) ID55: .022" (0.55 mm)
Polyurethane Reinforced		Yes
Total Thickness	ASTM F386	.098" (2.5 mm)
Static Load Limit	ASTM F970	Passes
Electrostatic Propensity	EN1815	≤ 2kV
Resistance to Heat	ASTM F1514	$\Delta \sum \leq 8.0$
Resistance to Light	ASTM F1515	$\Delta \sum \leq 8.0$
Slip Resistance	ASTM D2047	SCOF ≥ 0.6
Flame Resistance	ASTM E648	Class 1
Chemical Resistance	ASTM F925	Good
Colors		24 Woods 6 Tiles (Stone, Abstract, Textile)
Planks	Size Pieces per carton Square feet per carton Weight	ID70: 24201: 7.87" x 48" (20 cm x 122 cm) 24205: 6.56" x 39.37" (16.66 cm x 100 cm) 22 39.35 ft² (3.66 m²) 35 lbs. per ctn (15.87 kg)
		ID55: 24231: 7.87" x 48" (20 cm x 122 cm) 24235: 6.56" x 39.37" (16.66 cm x 100 cm) 15 39.35 ft² (3.66 m²) 35 lbs. per ctn (15.87 kg)
Tiles	Size Pieces per carton Square feet per carton Weight	ID70: 24207: 19.68" x 19.68" (50 cm x 50 cm) 15 40.34 ft² (3.75 m²) 35 lbs. per ctn (15.87 kg)
		ID55: 24237: 19.68" x 19.68" (50 cm x 50 cm) 15 40.34 ft² (3.75 m²) 35 lbs. per ctn (15.87 kg)

Please visit www.tarkettna.com for the most updated specification, installation, cleaning and maintenance instructions.



Millwork® Masquerade® Contoured Wall Base

Technical Data	Standards	
Type of Wall Covering	ASTM F1861	Contoured Wall Base
Classification	ASTM F1861	Type TP, Group 1 (Solid)
Dimensional Stability	ASTM F1861	+/- 0.25% Change
Staining of Adjacent Surfaces		No Staining
Resistance to Light	ASTM F1515	$\Delta\sum \leq 8.0$
Flame Spread/Smoke Density	ASTM E84	Class A, <450
Chemical Resistance	ASTM F925	Good

Please visit www.tarkettna.com for the most updated specification, installation, cleaning and maintenance instructions.



SureStart™ Underlayment

Technical Data		SureStart
Acoustical Sound Reduction	ASTM E492 & E989*	IIC 66
	ASTM E2179	Δ IIC 17
	ASTM E90 & 413*	STC 63
Moisture Impermeability	ASTM E96	<1.0 perm.
	ASTM F2170	99% RH
	ASTM F1869	10 lbs. per 1,000 ft ² / 24 hrs.
		7-11 pH

Please visit www.tarkettna.com for the most updated specification, installation, cleaning and maintenance instructions.

*Acoustical testing performed with a 4 mm LVT & SureStart underlayment in a common floor/ceiling assembly.

30000 AURORA ROAD
SOLON, OH 44139
800.899.8916 OR 440.543.8916
TARKETTNA.COM

