



Flush Fireplace Vent [Luxe]

INSTALL GUIDE



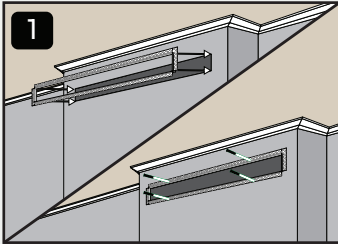
Scan to unlock your free warranty

Or – on your phone? Press + hold the QR code to go straight there.

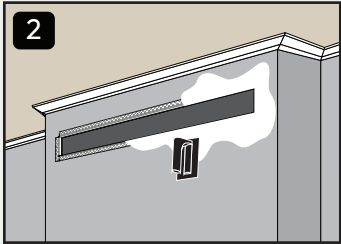
Drywall



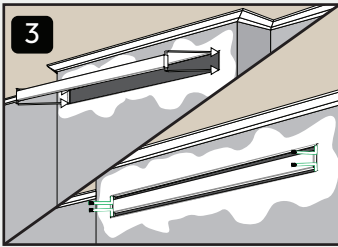
Walls + ceilings
Do not use on floors



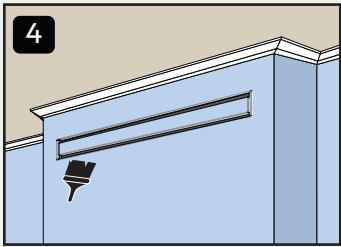
1 Cut opening in drywall. Insert **body** into cavity. Use drywall screws to fasten.



2 Use mud to cover flange surface. Sand so surface transitions smoothly. Repeat step as needed.

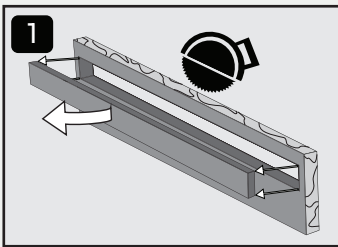


3 Insert **tray** with solid face forward. Secure in all four corners using included button-head screws.

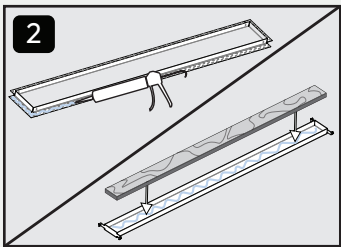


4 Paint inside of **body** + **tray** to match surrounding walls.

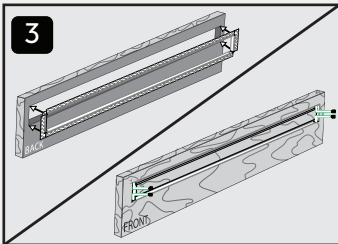
Off-Site Shop



1 Cut hole in stone, tile, or millwork according to vent size. Set aside off-cuts.



2 Apply adhesive to back of flange and the inside of the **tray**. Insert off-cuts from step 1 in **tray**.



3 Insert **body** on rear of the hole from step 1. Mount **tray** and secure four corners using included button-head screws.



4 Install stone, tile, or millwork on-site.



Flush Fireplace Vent [Luxe]

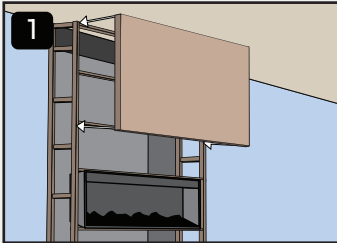
INSTALL GUIDE



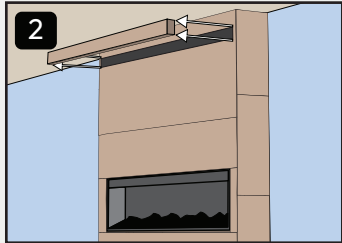
Scan to unlock
your free warranty

Or – on your phone?
Press + hold the QR code to
go straight there.

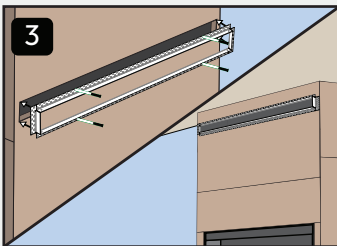
On-Site Cladding



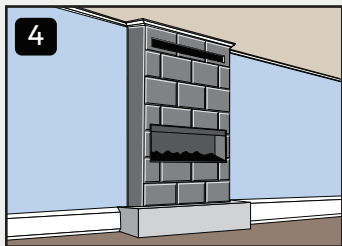
1 Install cladding material to fireplace frame on-site.



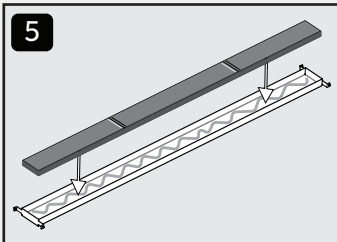
2 Cut hole in cladding according to vent size.



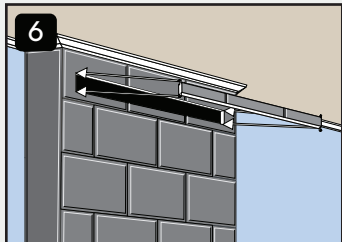
3 Insert **body** into cavity. Secure with screws.



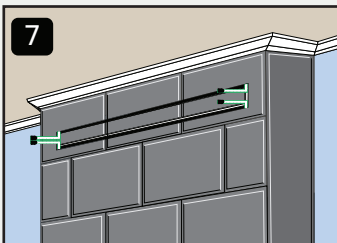
4 Apply stone, tile, or millwork to fireplace wall on-site.



5 Apply adhesive to **tray** and insert matching material.



6 Dry-fit **tray** into cavity.



7 Mount **tray** and secure four corners using included button-head screws.



8 That's it! Fittes to perfection.