




**IMPERIAL  
BLADES™**

OSCILLATING MULTI-TOOL ACCESSORIES

**STARLOCK™**





"Imperial Blades makes amazing, long lasting oscillating multi-tool blades for many different applications. When you pair that with Starlock™ fitment, you get an amazing combination. Faster cuts in every material and blade durability to back up cutting performance!"

*Dane Perkins, CKBR  
Owner/Project Manager  
GMH Construction Inc.*

SHOWN HERE:  
IBSL220  
PAGE 8



# CONTENTS

---

<b>ABOUT IMPERIAL BLADES &amp; STARLOCK™</b>	<b>5</b>
<b>METAL BLADES</b>	<b>6</b>
<b>WOOD BLADES</b>	<b>8</b>
<b>MULTI-MATERIAL BLADES</b>	<b>11</b>
<b>SPECIALTY BLADES</b>	<b>13</b>
<b>APPLICATION OVERVIEW</b>	<b>18</b>





# STARLOCK™ COMPATIBILITY

---

Imperial Blades' Starlock™ anchor is compatible with Bosch®, Fein®, Milwaukee®, Ridgid®, Makita®, Rockwell® and more, as well as Starlock Plus™ and Starlock Max™.



STARLOCK™



STARLOCK PLUS™



STARLOCK MAX™



BOSCH® STARLOCK™



FEIN® STARLOCK™

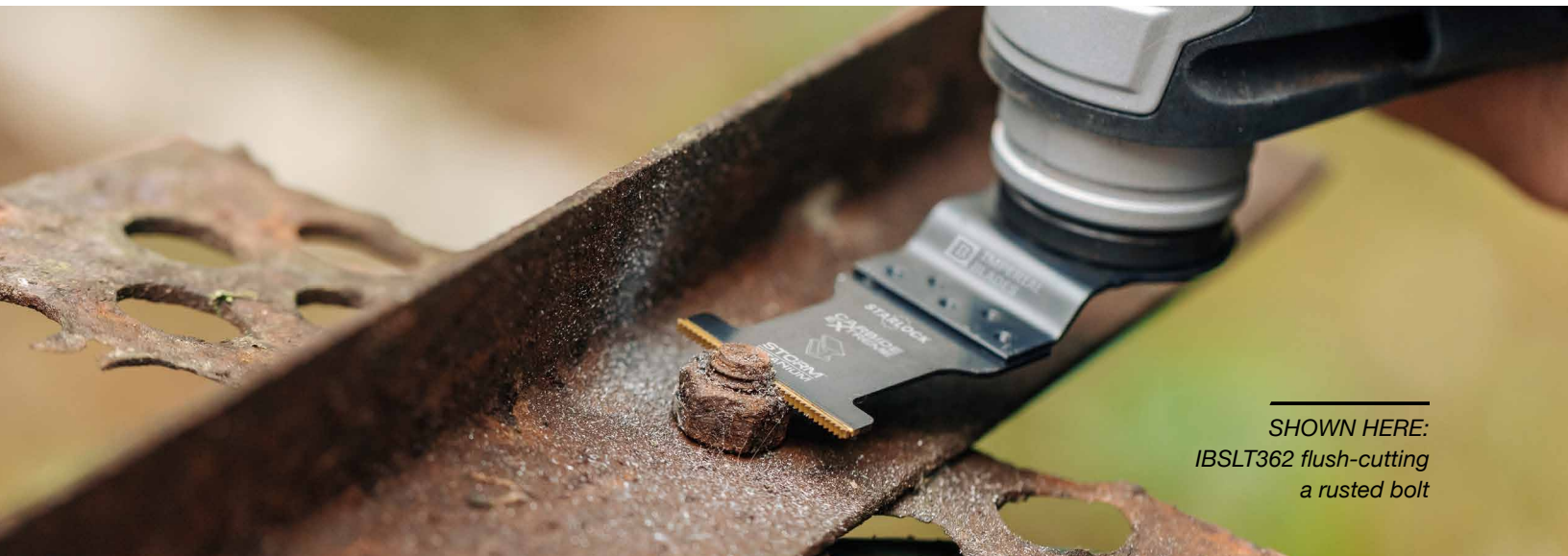


Imperial Blades is the only American manufacturer of oscillating multi-tool accessories. We produce and market innovative solutions for residential, construction and industrial applications. Our 25,000+ square foot facility is home to over 75 employees who take pride in developing revolutionary products for this exciting, fast growing category.

After the creation of the One Fit™ anchor in 2009, Imperial Blades expanded its product offering with the addition of Starlock™ (2017) and SuperCut™ (2011), making it the only true universal brand.

Visit us online at [www.imperialblades.com](http://www.imperialblades.com) for more information.





SHOWN HERE:  
IBSLT362 flush-cutting  
a rusted bolt

## CARBIDE EXTREME STORM TITANIUM METAL BLADE

### IBSLT362

- Recommended applications: Thick Metal, Bolts, Screws, Copper Pipe, Wood & Nails
- Utilizes carbide embedded teeth for the toughest applications
- Up to 30% longer life\*\* with Storm Titanium (TiN) coating

#### Application



Thick  
Metal



Bolts



Screws



Copper  
Pipe

1 Piece \_\_\_\_\_ IBSLT362-1  
2 Piece \_\_\_\_\_ IBSLT362-2  
5 Piece \_\_\_\_\_ IBSLT362-5



1-3/8" (35mm) CT

## STANDARD THIN METAL BLADE

### IBSL310

- Recommended applications: Copper Pipe, Thin Metal, Fiberglass, PVC
- Ultra-thin cutting line for fast, smooth cuts in non-ferrous metals

#### Application



Copper  
Pipe



Thin  
Metal



Fiberglass



PVC

1 Piece \_\_\_\_\_ IBSL310-1  
3 Piece \_\_\_\_\_ IBSL310-3  
10 Piece \_\_\_\_\_ IBSL310-10



1-3/16" (30mm) BiM

\*Up to 30X more cuts than standard Imperial bi-metal blades

\*\*Up to 30% longer life with TiN coated BiM blades vs non-TiN BiM blades in nail-embedded wood

## STANDARD METAL BLADE

### IBSL330



1-1/8" (29mm) BiM

- Recommended applications: Metal (Non-Ferrous), Wood & Nails, Wood, PVC
- Wavy tooth pattern reduces strain on individual teeth for a superior cut in a wide variety of non-ferrous metal profiles

#### Application



Metal



Wood  
& Nails



Wood



PVC

1 Piece \_\_\_\_ IBSL330-1  
3 Piece \_\_\_\_ IBSL330-3  
10 Piece \_\_\_\_ IBSL330-10

## STANDARD METAL BLADE

### IBSL340



1-3/4" (44mm) BiM

- Recommended applications: Metal (Non-Ferrous), Wood & Nails, Wood, PVC
- Wavy tooth pattern reduces strain on individual teeth for a superior cut in a wide variety of non-ferrous metal profiles

#### Application



Metal



Wood  
& Nails



Wood



PVC

1 Piece \_\_\_\_ IBSL340-1  
3 Piece \_\_\_\_ IBSL340-3  
10 Piece \_\_\_\_ IBSL340-10  
(Also available in variety pack)

## THIN METAL SEGMENT BLADE

### IBSL410



3-3/8" (86mm) HSS

- Recommended applications: Thin Metal, Wood, Fiberglass, PVC
- Segment blade shape ideal for working in corners and on edges without overcut

#### Application



Thin  
Metal



Wood



Fiberglass



PVC

1 Piece \_\_\_\_ IBSL410-1

## STANDARD WOOD BLADE

### IBSL200



1-3/8" (35mm) HCS

- Recommended applications: Wood, PVC, Drywall

#### Application



Wood



PVC



Drywall

1 Piece \_\_\_\_\_ IBSL200-1  
3 Piece \_\_\_\_\_ IBSL200-3  
10 Piece \_\_\_\_\_ IBSL200-10

## STANDARD POWER CURVE WOOD BLADE

### IBSL250



2-1/2" (64mm) HCS

- Recommended applications: Wood, PVC, Drywall
- New Power Curve cutting edge for greater control and easier starts while plunge cutting
- Extra-wide fan blade ideal for long and straight cuts with minimal deflection

#### Application



Wood



PVC



Drywall

1 Piece \_\_\_\_\_ IBSL250-1  
3 Piece \_\_\_\_\_ IBSL250-3  
10 Piece \_\_\_\_\_ IBSL250-10

## JAPANESE TOOTH HARDWOOD BLADE

### IBSL220



1-3/8" (35mm) HCS

- Recommended applications: Hardwood, Wood, PVC, Drywall
- Triple-ground Japanese tooth design for fast, clean, and precise cuts in wood

#### Application



Hardwood



Wood



PVC



Drywall

1 Piece \_\_\_\_\_ IBSL220-1  
3 Piece \_\_\_\_\_ IBSL220-3  
10 Piece \_\_\_\_\_ IBSL220-10  
(Also available in variety pack)



## JAPANESE TOOTH POWER CURVE HARDWOOD BLADE

### IBSL270



2-1/2" (64mm) HCS

- Recommended applications: Hardwood, Wood, PVC, Drywall
- Triple-ground Japanese tooth design for fast, clean, and precise cuts in wood
- New Power Curve cutting edge for greater control and easier starts while plunge cutting
- Extra-wide fan blade ideal for long and straight cuts with minimal deflection

### Application



Hardwood



Wood



PVC



Drywall

1 Piece \_\_\_\_ IBSL270-1

3 Piece \_\_\_\_ IBSL270-3

10 Piece \_\_\_\_ IBSL270-10



SHOWN HERE:  
IBSL270 cutting door jamb  
for flooring installation



SHOWN HERE:  
IBSL337 trimming  
wood with nails



## STANDARD WOOD & NAILS BLADE



1-3/8" (35mm) BIM

### IBSL300

- Recommended applications: Wood & Nails, Copper Pipe, Wood, PVC
- Features ETS (Every Tooth Set), an alternating tooth pattern ideal for fast and smooth cuts in nail-embedded wood and other non-ferrous metals

#### Application



Wood & Nails



Copper Pipe



Wood



PVC

1 Piece \_\_\_\_ IBSL300-1  
3 Piece \_\_\_\_ IBSL300-3  
10 Piece \_\_\_\_ IBSL300-10  
(Also available in variety pack)

## STANDARD WOOD & NAILS BLADE



2-1/2" (64mm) BIM

### IBSL337

- Recommended applications: Wood & Nails, Copper Pipe, Wood, PVC
- Features ETS (Every Tooth Set), an alternating tooth pattern ideal for fast and smooth cuts in nail-embedded wood and other non-ferrous metals
- Extra-wide fan blade ideal for long and straight cuts with minimal deflection

#### Application



Wood & Nails



Copper Pipe



Wood



PVC

1 Piece \_\_\_\_ IBSL337-1  
3 Piece \_\_\_\_ IBSL337-3  
10 Piece \_\_\_\_ IBSL337-10

## STANDARD ALL-PURPOSE VARIETY PACK



### IBSLV-3

- Recommended applications: Metal (Non-Ferrous), Wood & Nails, Copper Pipe, Hardwood, Wood, PVC
- Variety pack of standard all-purpose blades for an assortment of applications
- Includes: IBSL300 (1), IBSL340 (1), IBSL220 (1)

#### Application



Metal



Wood & Nails



Copper Pipe



Hardwood

3 Piece \_\_\_\_ IBSLV-3



---

SHOWN HERE:  
IBSL620 removing  
tile mortar



## CARBIDE GRIT SEGMENT BLADE



3" (76mm) CG

### IBSL610

- Recommended applications: Tile Grout
- Segment blade shape ideal for working in corners and on edges without overcut

#### Application



Tile  
Grout

1 Piece \_\_\_\_\_ IBSL610-1

## CARBIDE GRIT TRIANGLE RASP



3-1/8" (79mm) CG

### IBSL620

- Recommended applications: Tile Mortar
- Ideal for coarse grinding, rasping or aggressive material removal over large surface areas

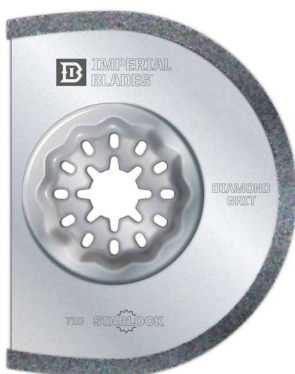
#### Application



Tile  
Mortar

1 Piece \_\_\_\_\_ IBSL620-1

## DIAMOND GRIT SEGMENT BLADE



3" (76mm) DG

### IBSL710

- Recommended applications: Brick Mortar, Manufactured Stone, Tile Grout, Plaster
- Segment blade shape ideal for working in corners and on edges without overcut

#### Application



Brick  
Mortar



Manufactured  
Stone

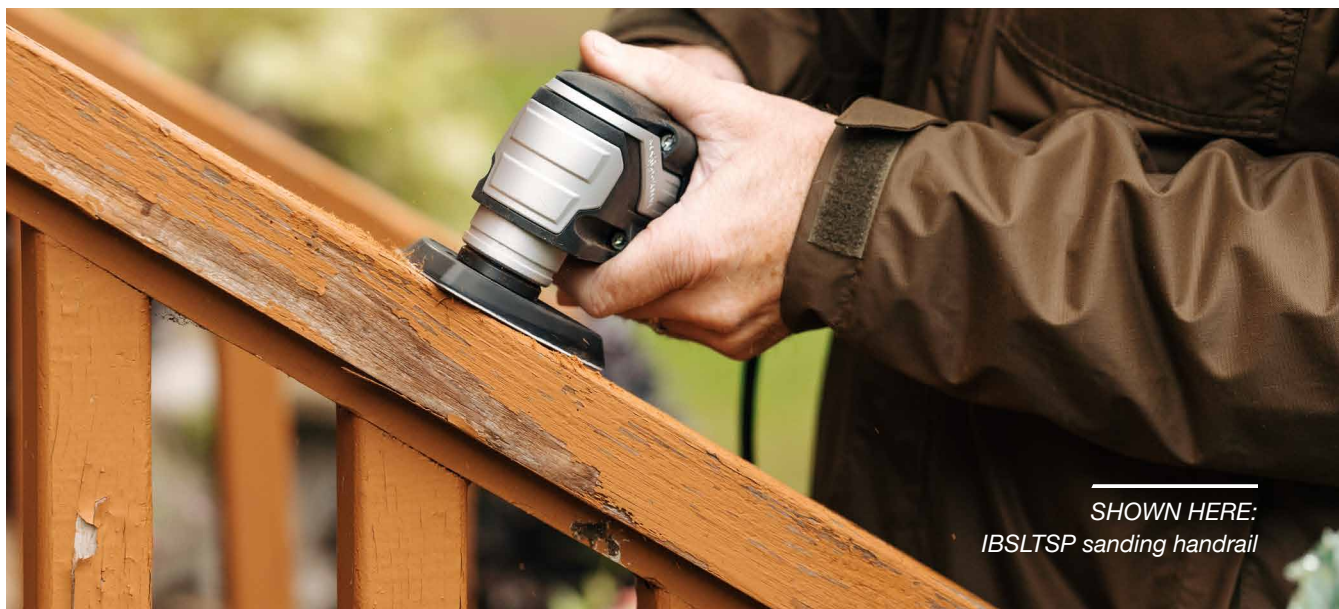


Tile  
Grout



Plaster

1 Piece \_\_\_\_\_ IBSL710-1



## TRIANGLE SANDING PAD

### IBSLTSP

- Accessory for use with sandpaper
- Sanding pad makes abrasive changes quick and easy due to the hook & loop backing

1 Piece \_\_\_\_\_ IBSLTSP-1



3-1/2" (89mm)

## TRIANGLE SANDPAPER

### IBOTSPH

- Recommended applications: Wood, Paint, Varnish
- Sandpaper includes holes to allow for dust collection through the sanding pad for multi-tools with vacuum attachments

### Application



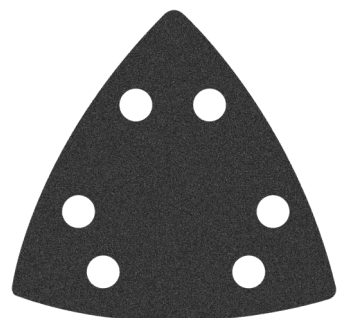
Wood



Paint



Varnish



3-1/2" (89mm)

5 Piece, 60 Coarse Grit \_\_\_\_\_ IBOTSPH60-5  
 5 Piece, 80 Coarse Grit \_\_\_\_\_ IBOTSPH80-5  
 5 Piece, 120 Medium Grit \_\_\_\_\_ IBOTSPH120-5  
 5 Piece, 180 Fine Grit \_\_\_\_\_ IBOTSPH180-5  
 5 Piece, 240 Fine Grit \_\_\_\_\_ IBOTSPH240-5  
 6 Piece, Variety (60, 120, 240) \_\_\_\_\_ IBOTSPHV-6  
 50 Piece, Variety \_\_\_\_\_ 50TSPV



## HARD MATERIAL RIGID SCRAPER

### IBSL500



2" (51mm) HCS

- Recommended applications: Adhesives, Vinyl Flooring, Carpet, Paint, Varnish
- Rigid enough to handle the toughest scraping applications with less wear

#### Application

1 Piece \_\_\_\_\_ IBSL500-1



Adhesives



Vinyl  
Flooring



Carpet



Paint

## SOFT MATERIAL FLEXIBLE SCRAPER

### IBSL520



2" (51mm) HCS

- Recommended applications: Sealant, Caulk, Adhesives, Paint, Foam Insulation
- Users are recommended to hold the blade at a 30 to 40-degree angle to the work surface

#### Application

1 Piece \_\_\_\_\_ IBSL520-1



Sealant



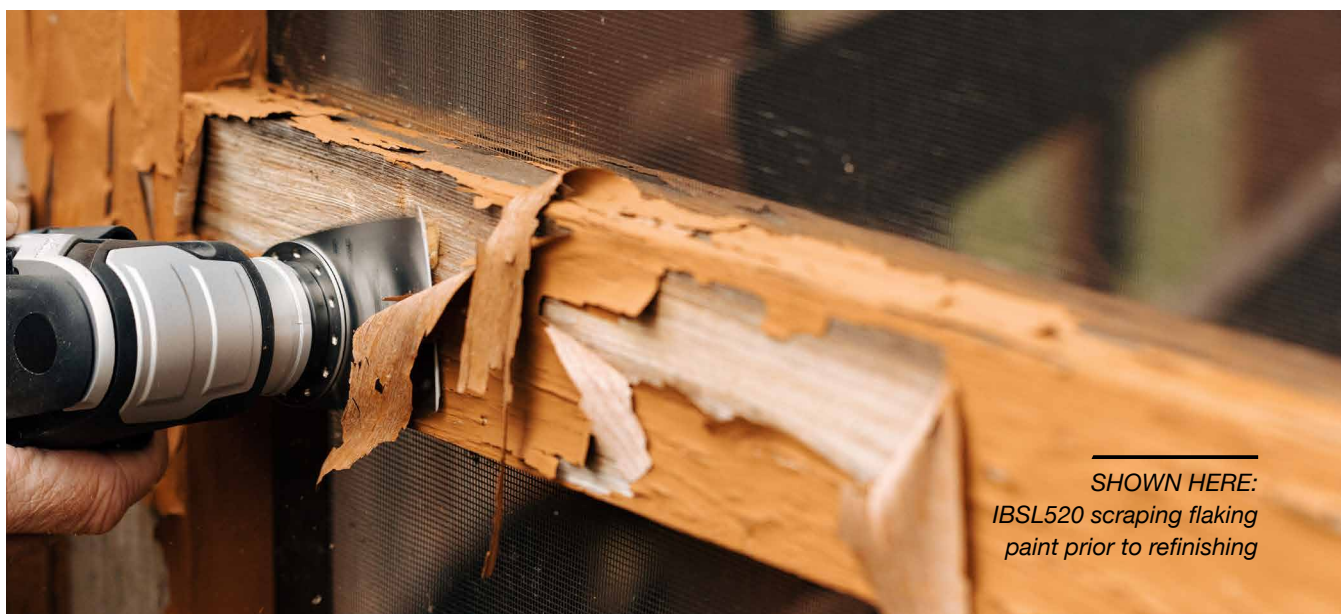
Caulk



Adhesives



Paint



SHOWN HERE:  
IBSL520 scraping flaking  
paint prior to refinishing

## SOFT MATERIAL FLEXIBLE MUSHROOM SCRAPER

### IBSL510



2-3/4" (70mm) HCS

- Recommended applications: Silicone/Soft Glazing Compound
- Unique blade design allows user greater control & faster completion of projects

#### Application



Silicone/  
Soft Glazing Compound

5 Piece \_\_\_\_ IBSL510-5

## 3-IN-1 FEATURES MULTI-KNIFE

### IBSL505



1-5/8" (41mm) HCS

- Recommended applications: Asphalt Shingles, Vinyl Flooring, Carpet & Padding, Roofing Fabric, Cardboard, Foam Insulation
- Special hooked design for easy push and pull cutting
- Front knife edge for cutting and scraping

#### Application



Asphalt  
Shingles



Vinyl  
Flooring



Carpet  
& Padding



Roofing  
Fabric

1 Piece \_\_\_\_ IBSL505-1



SHOWN HERE:  
IBSL505 cutting  
asphalt shingles

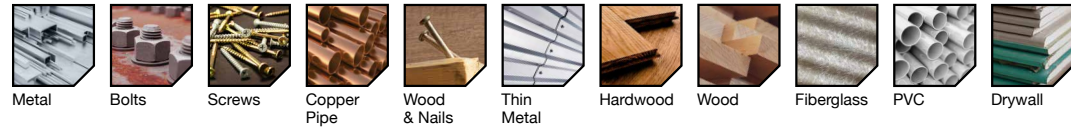






# APPLICATION OVERVIEW

Recommended
  Acceptable
  Not Recommended



METAL	TIN	IBSLT362	Recommended	Recommended	Recommended	Acceptable	Acceptable	Not Recommended	Not Recommended	Not Recommended	Not Recommended	Not Recommended
		IBSL310	Not Recommended	Not Recommended	Not Recommended	Recommended	Not Recommended	Recommended	Not Recommended	Not Recommended	Recommended	Acceptable
		IBSL330	Recommended	Not Recommended	Not Recommended	Not Recommended	Recommended	Not Recommended	Not Recommended	Acceptable	Not Recommended	Not Recommended
		IBSL340	Recommended	Not Recommended	Not Recommended	Not Recommended	Recommended	Not Recommended	Not Recommended	Acceptable	Not Recommended	Not Recommended
		IBSL410	Not Recommended	Not Recommended	Not Recommended	Not Recommended	Not Recommended	Recommended	Not Recommended	Acceptable	Acceptable	Not Recommended
MULTI-MATERIAL		IBSL300	Not Recommended	Not Recommended	Not Recommended	Recommended	Recommended	Not Recommended	Not Recommended	Acceptable	Not Recommended	Not Recommended
		IBSL337	Not Recommended	Not Recommended	Not Recommended	Recommended	Recommended	Not Recommended	Not Recommended	Acceptable	Not Recommended	Not Recommended
WOOD		IBSL200	Not Recommended	Not Recommended	Not Recommended	Not Recommended	Not Recommended	Not Recommended	Recommended	Not Recommended	Acceptable	Acceptable
		IBSL250	Not Recommended	Not Recommended	Not Recommended	Not Recommended	Not Recommended	Not Recommended	Recommended	Not Recommended	Acceptable	Acceptable
		IBSL220	Not Recommended	Not Recommended	Not Recommended	Not Recommended	Not Recommended	Recommended	Not Recommended	Acceptable	Acceptable	Acceptable
		IBSL270	Not Recommended	Not Recommended	Not Recommended	Not Recommended	Not Recommended	Recommended	Not Recommended	Acceptable	Acceptable	Acceptable



SPECIALTY	IBSL610							
	IBSL620							
	IBSL710							
	IBSLTSP/ IBOTSPH							



SEALANT / SCRAPERS	IBSL500							
	IBSL520							
	IBSL510							
	IBSL505							



450 PROGRESS WAY  
SUN PRAIRIE, WI 53590  
800.743.9844  
IMPERIALBLADES.COM

