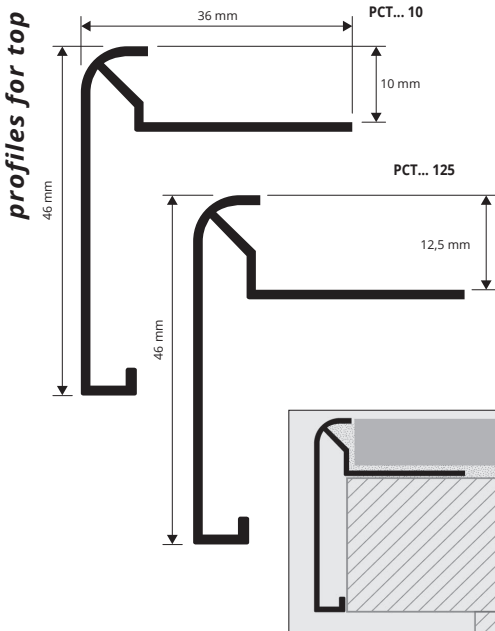


PROTOP

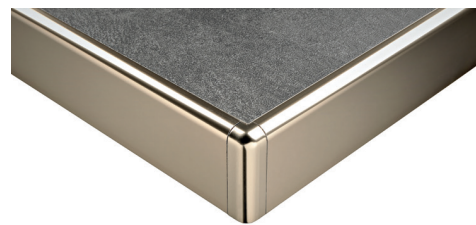
ANODIZED AND POLISHED ALUMINIUM

PROTOP is a rounded profile in anodized and polished aluminium. The profile protects the tile edges and decorates the countertops of kitchens realized with ceramic. Its particular section and elegance, the availability of three different finishes and special pieces such as internal and external corner at 90° and 135°, make **PROTOP** a much sought-after profile that allows an elegant workmanlike application.



ANODIZED SILVER ALUMINIUM
bar length 2,7 lm - pack. 10 Pcs - 27 lm

Article	H mm		
PCTAA 10	10		
PCTAA 125	12,5		



POLISHED TITANIUM ALUMINIUM
bar length 2,7 lm - pack. 10 Pcs - 27 lm

Article	H mm		
PCTBT 10	10		
PCTBT 125	12,5		

POLISHED CHROME ALUMINIUM
bar length 2,7 lm - pack. 10 Pcs - 27 lm

Article	H mm		
PCTBC 10	10		
PCTBC 125	12,5		

CLOURS

AA - Anodized silver alum.	BT - Polished titanium alum.	BC - Polished chrome alum.

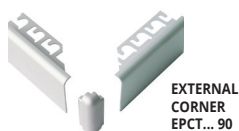
EXAMPLES AND INSTRUCTIONS FOR LAYING METHODS

1. Choose "PROTOP" according to the tile thickness and desired finish. 2. Cut "PROTOP" to the desired length and apply the adhesive on the support where the profile will be laid. 3. Press the anchoring flange of "PROTOP" into the adhesive. 4. Lay the tiles, aligning them with the profile leaving a 2 mm joint. Remove immediately all remains of adhesive from the surface of the profile. 5. Fill the joints between the profile and the tiles with grout, in order to avoid water stagnation. Remove immediately all the remains of grout from the surface of the profile.

CORNERS

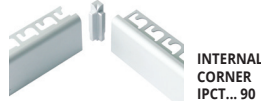
INTERNAL / EXTERNAL CORNERS ANODIZED SILVER ALUMINIUM
pack. 10 Pcs

Article	
EPCTAA 90 (external 90°)	
IPCTAA 90 (internal 90°)	
EPCTAA 135 (external 135°)	
IPCTAA 135 (internal 135°)	



INTERNAL / EXTERNAL CORNERS POLISHED TITANIUM ALUMINIUM
pack. 10 Pcs

Article	
EPCTBT 90 (external 90°)	
IPCTBT 90 (internal 90°)	
EPCTBT 135 (external 135°)	
IPCTBT 135 (internal 135°)	



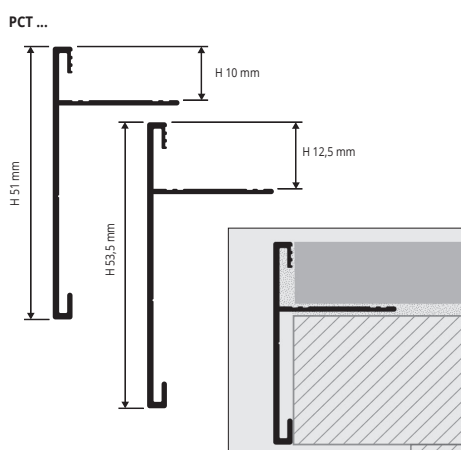
INTERNAL / EXTERNAL CORNERS POLISHED CHROME ALUMINIUM
pack. 10 Pcs

Article	
EPCTBC 90 (external 90°)	
IPCTBC 90 (internal 90°)	
EPCTBC 135 (external 135°)	
IPCTBC 135 (internal 135°)	

PROTOP T

ANODIZED AND POLISHED ALUMINIUM

PROTOP T is a square profile in anodized and polished aluminium. The profile protects the tile edges and decorates the countertops of kitchens realized with ceramic. Its particular section and elegance, the availability of two different finishes and special pieces such as internal and external corner at 90° and 135°, make **PROTOP T** a much sought-after profile that allows an elegant workmanlike application.



ANODIZED SILVER ALUMINIUM
bar length 2,7 lm - pack. 10 Pcs - 27 lm

Article	H mm		
PCTAA 10T	10		
PCTAA 125T	12,5		



POLISHED CHROME ALUMINIUM
bar length 2,7 lm - pack. 10 Pcs - 27 lm

Article	H mm		
PCTBC 10T	10		
PCTBC 125T	12,5		

INTERNAL / EXTERNAL CORNER ANODIZED SILVER ALUMINIUM
pack. 10 Pcs

Article	
IEPCTAA 12590T (90°)	
IEPCTAA 1090T (90°)	
IEPCTAA 10135T (135°)	
IEPCTAA 125135T (135°)	

INTERNAL / EXTERNAL CORNER ANODIZED CHROME ALUMINIUM
pack. 10 Pcs

Article	
IEPCTBC 12590T (90°)	
IEPCTBC 1090T (90°)	
IEPCTBC 10135T (135°)	
IEPCTBC 125135T (135°)	

EXAMPLES AND INSTRUCTIONS FOR LAYING METHODS

1. Choose "PROTOP T" according to the tile thickness and desired finish. 2. Cut "PROTOP T" to the desired length and apply the adhesive on the support where the profile will be laid. 3. Press the anchoring flange of "PROTOP T" into the adhesive. 4. Lay the tiles, aligning them with the profile leaving a 2 mm joint. Remove immediately all remains of adhesive from the surface of the profile. 5. Fill the joints between the profile and the tiles with grout, in order to avoid water stagnation. Remove immediately all the remains of grout from the surface of the profile.



CLOURS

AA - Anodized silver alum.	BC - Polished chrome alum.