

Tarkett VCT II

VINYL COMPOSITION TILE

Style &
strength
where they're
needed most.

 **Tarkett**

The image shows a physical therapy or treatment room. In the foreground and middle ground, there are several grey treatment tables with metal frames, arranged in a row. The floor is covered in large, interlocking vinyl composition tiles (VCT) in a variety of colors: light tan, dark blue, light blue, and green. The tiles are arranged in a complex, repeating geometric pattern. In the background, there are windows with light-colored curtains. The overall lighting is bright and even.

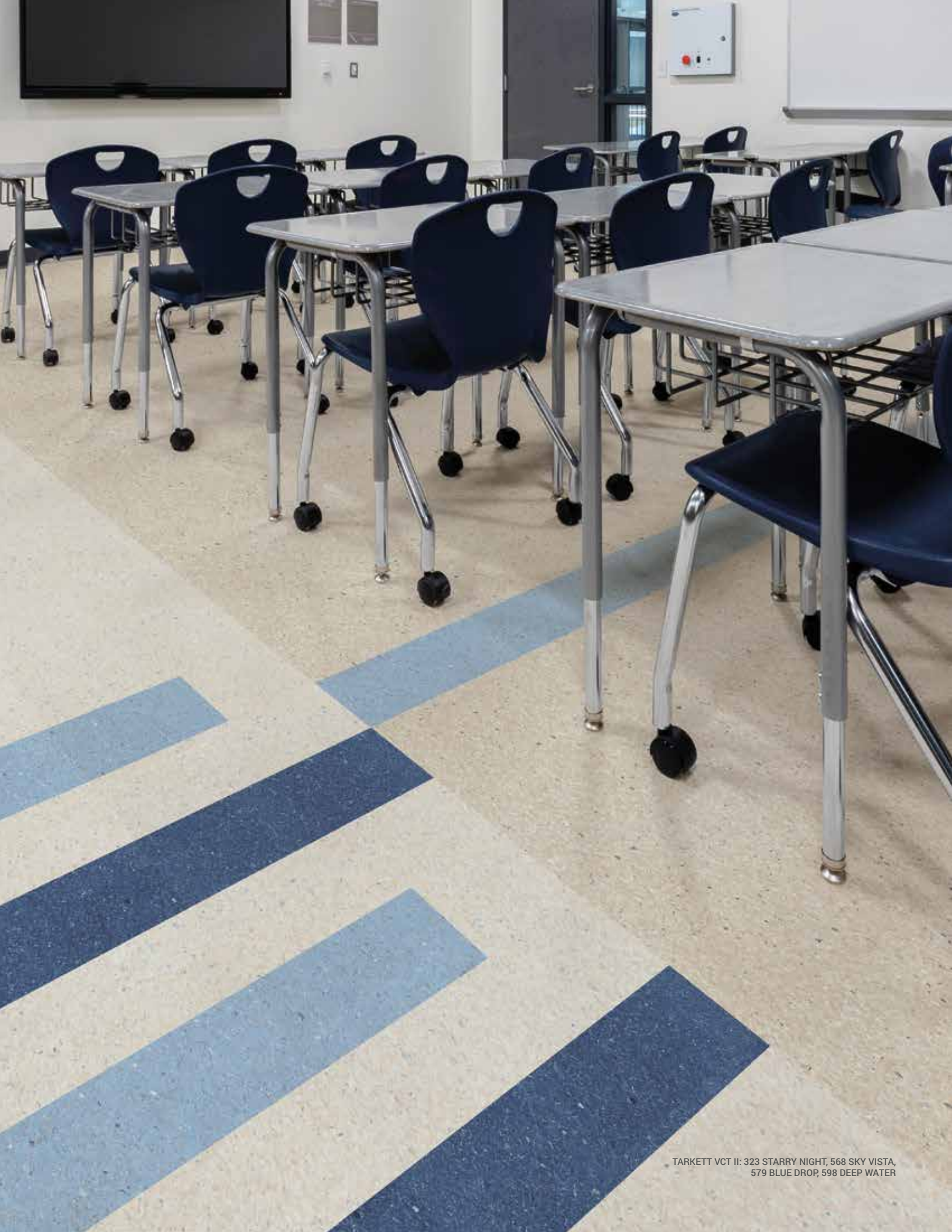
Trusted solutions for demanding spaces.

Tarkett VCT II brings great design options and outstanding value together in a long-trusted solution. This durable material is made to withstand heavy traffic and rolling loads, delivering strong performance and return on investment. Design is never lacking either, with a carefully selected palette of favorite neutrals and colorful accents that can be mixed and matched in creative layouts. Tarkett's vinyl composition tile is constructed of up to 85% limestone and can be completely recycled into new VCT flooring when it's time for an update. Tarkett VCT II is phthalate-free to contribute to better indoor air quality. A complete solution from every angle.

TARKETT VCT II: 527 MILITARY TAN, 568 SKY VISTA,
573 DESERT STORM, 588 MEADOW, 598 DEEP WATER









556 Sandstone W
TG1 Snowbound W*



326 Dunes CB
121 Cement CB*



530 Winter Storm WG
24 Grey Haze WG*



533 True Beige WB
11 Canvas WB*



325 Ginger Spice WB
107 Neutrality



582 Ivory Tower CB
31 Zephyr CB*



323 Starry Night CG
31 Zephyr CB*



580 Mineral White W
08 Icicle W*



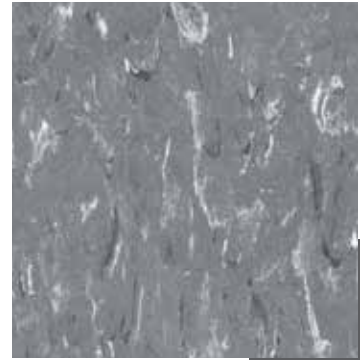
509 Pewter WG
32 Pebble WG*



480 Pure White W
460 Cotton W*



557 Shooting Star CG
TA5 Colonial Grey CG*



522 Steel Works W
TA6 Bedrock CG*



573 Desert Storm CB
22 Pearl CB*



527 Military Tan WB
280 Shoreline



593 Mushroom CB
80 Fawn CB*



501 Almond WB
09 Clay WB*



329 Pebble Beach CB
121 Cement CB*



503 Adobe
76 Cinnamon



597 Amberlight WB
TA3 Castaway CB



571 Earth WB
129 Silk WB*



504 Copper
45 Sandalwood WB



569 Ebony B
40 Black B*



528 Doeskin Brown
76 Cinnamon



513 Deep Plum
VM2 Shoreline Plum



575 Seafoam W
50 White W*



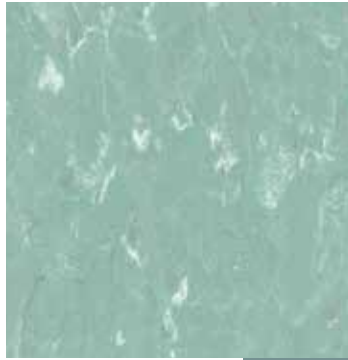
594 Turquoise
192 Tidewater



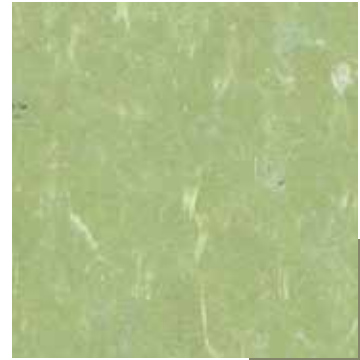
500 Buttermilk
79 Bone White W*



328 Palm CB
31 Zephyr CB



588 Meadow
41 Seabreeze



526 Green Grape
TH1 Glenhaven



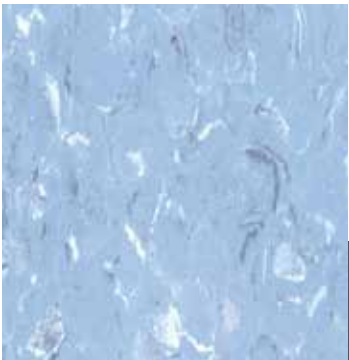
579 Blue Drop W
08 Icicle W*



572 Cloudy CG
262 Drizzle CG*



524 Dark Forest
86 Hunter Green



568 Sky Vista
84 Blue Jeans



598 Deep Water
84 Blue Jeans



565 Matador
TB6 Flame

Granite Slip Resistant



880 Twilight CG
TB3 Dover CG*



873 Daylight CB
32 Pebble WG*

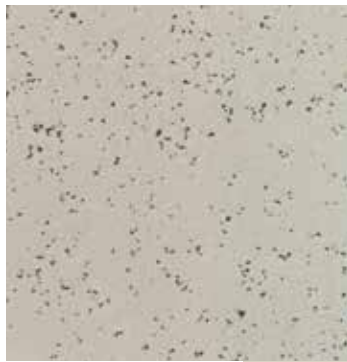


875 Sunlight WG
55 Silver Grey WG*

Premium Quartz



600 Stone White W
50 White W*



601 Stone Taupe CB
24 Grey Haze WG*



602 Stone Grey WG
48 Grey WG*

Solid Colors



60 Solid White W
50 White W*



65 Solid Red
TB6 Flame



69 Solid Black B
40 Black B*



← suggested coordinating finishing borders (wall base)

We've identified Color Foundations™ neutrals in the following way:

000 color name

000 coordinating color*

WB (Warm Beige), **CB** (Cool Beige),
WG (Warm Grey), **CG** (Cool Grey),
B (Black), **W** (White).

*Suggested colors for finishing borders (wall base). Coordinated Tarkett Accessories are a printed approximation. Please refer to the Color Guide for accurate color representation.

Doing good. Together.

At Tarkett North America, we believe that together, we can make a positive impact on people and the planet. That's why we're Doing Good—Together, connecting our sustainability efforts with what our customers value and our world needs. It's an active, living commitment to create a future where people and the planet prosper in balance. Where sustainable flooring solutions don't just perform. They inspire.

Cradle to Cradle® certification guides our eco-design approach on the basis of five criteria: material health, product circularity, renewable energy and climate requirements, water stewardship and social fairness.

Staying aligned with the *Cradle to Cradle Certified™* Products Program (along with circular economy principles) has helped us assess our positive and negative impacts upon the environment and people's health. By following these design principles for health and wellness, we have created phthalate-free, low-TVOC, carbon neutral products in both the resilient, and soft surface categories.

Through this process, we have: reduced our energy use; converted factories in Ohio, Sweden and Italy to renewable energy; utilized recycled materials in our products to create a product portfolio of carbon neutral products; and we have partnered on global projects for our offsetting - including support of international renewable energy initiatives, and reforestation of the Peruvian Amazon. Through our support of the Tambopata National

Reserve and the Bahuaja-Sorene National Park, we've helped to project nearly 1.5 million acres and restore 10,000 acres—an action expected to avoid over 4 million tons of carbon emissions..

We are often asked to simplify our sustainability story. The truth is that making a positive impact on our world and its citizens is not so simple. Reducing the use of fossil fuels and incorporating recycled materials into our products can pose challenges, but Tarkett is working hard to make these improvements—because we value your health, and that of our environment. In our ongoing efforts to promote sustainability, achieving carbon neutrality is just one more step toward creating a better world.

At Tarkett, our approach to sustainability is woven into the fabric of how we do business. To us, it's not a bolt on, or something to 'bear in mind,' it sits at the very heart of our day-to-day decision making. We have three main areas of focus:

Our commitment is founded on three central pillars:



CIRCULAR ECONOMY

Closing the loop on waste, preserving our planet's natural resources and reducing the impact on climate change.



GOOD MATERIALS

Subjecting ourselves to relentless scientific scrutiny and offering radical transparency about our products.



INDOOR AIR QUALITY

A commitment to your health and well-being. Creating healthy indoor spaces with the highest standards of Indoor Air Quality.



TARKETT VCT II

TECHNICAL DATA	STANDARDS	VCT	PREMIUM QUARTZ	PREMIUM SOLIDS*
Type of Floor Covering		Vinyl Composition Tile	Vinyl Composition Tile	Vinyl Composition Tile
Classification	ASTM F 1066	Class 2 Through Pattern	Class 2 Through Pattern	Class 1 Solid Color
Colors		39	3	3
Total Thickness	ASTM F 386	.125" (3.18 mm)	.125" (3.18 mm)	.125" (3.18 mm)
Static Load Limit	ASTM F 970	150 psi	150 psi	150 psi
Flammability	ASTM E 648	Class 1 > .45 CRF	Class 1 > .45 CRF	Class 1 > .45 CRF
Smoke Density	ASTM E 662	> 450	> 450	> 450
Slip Resistance SCOF	ASTM D 2048	≥ .5	≥ .5	≥ .5
Chemical Resistance	ASTM F 925	Pass	Pass	Pass
Tile Size	ASTM F 2055	12" x 12" (305 mm x 305 mm)	12" x 12" (305 mm x 305 mm)	12" x 12" (305 mm x 305 mm)
Weight/sq. ft./m ²		1.4 lbs sq. ft. (6.9 kg / m ²)	1.4 lbs sq. ft. (6.9 kg / m ²)	1.4 lbs sq. ft. (6.9 kg / m ²)
Carton Quantity		45 tiles = 45 sq. ft. (4.18 m ²)	45 tiles = 45 sq. ft. (4.18 m ²)	45 tiles = 45 sq. ft. (4.18 m ²)
Carton Weight		63 lbs (29.0 kg)	63 lbs (29.0 kg)	63 lbs (29.0 kg)
Warranty		5 Year LIMITED Warranty. See www.tarkettna.com for complete warranty information.	5 Year LIMITED Warranty. See www.tarkettna.com for complete warranty information.	5 Year LIMITED Warranty. See www.tarkettna.com for complete warranty information.
Maintenance		Conventional VCT Maintenance 3-5+ coats of finish**	Conventional VCT Maintenance 3-5+ coats of finish**	

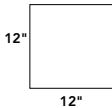
*Premium Solids are only recommended for accents and borders.

**Depending upon use of the floor

Please visit www.tarkettna.com for the most updated specifications, and installation, cleaning and maintenance instructions.



Every component of this carry board is 100% recyclable. The entire board will be recycled back into future products.
To recycle this carry board please mail to: Tarkett Recycling Center, 1 Looseleaf Lane, Vincent, AL 35178



ON THE COVER:

TARKETT VCT II: 503 ADOBE, 528 DOESKIN BROWN, 597 AMBERLIGHT

Tarkett North America

30000 Aurora Rd
Solon, OH 44139
800.899.8916

tarkettna.com