

Axis II 28 J8233

Carpet • Mainstreet - Nyluxe

Benefits

Made in Canada
Safe and healthy
Stain resistant & easy to clean
Warm, quiet and comfortable
High performance
Limitless designabilities
Environmentally-Friendly
Best-in-class Warranty

Product Specifications

Brand	Nyluxe
Collection	Mainstreet - Nyluxe
Style Name	Axis II 28
Style Number	J8233
Construction	Level Loop
Colors	9
Secondary Backing	Action Bac (AB)
Primary Backing	Woven Polypropylene
Fiber Type	100% BCF Solution Dyed Nylon
Dye Method	Solution Dyed
Abrasion Resistance	General Commercial Use
Standard Length	164 Ft (50 M)
Installation Pattern Repeat	n/a
Pattern Repeat Position	n/a
Pile Weight	28 oz./sq. yd. (949.4 g/m ²)
Certifications	Green Label Plus, Light Commercial Use, Made In Canada, SoilScreen, Stain Control
Indoor Air Quality	GLP 1724
Residential Warranty	Colorfastness <i>Lifetime</i> Edge Ravelling <i>Lifetime</i> No Questions Asked Replacement <i>Minimum 30 Days</i> Soil Resistance <i>Lifetime</i> Stain Resistance <i>Lifetime</i> Static Control <i>Lifetime</i> Wear Resistance <i>Lifetime</i> Anti-Zippering <i>Lifetime</i>
Commercial Warranty	Wear Resistance <i>10 Years</i>



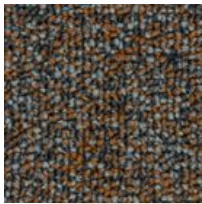
Commercial Specifications

Pile Height	11/64" (4 mm)
Kilotex	11.5
Density Factor	6401
Stitch Count	8.4/in. (33/10 cm)
Gauge	1/10" (2.54 mm)
Static Control	Less Than 3.0 kV (AATCC 134)
Flammability	Meets DOC FF-1-70 & C.G.S.B. 4-GP-129
Flooring Radiant Panel	Class 1 (ASTM E-648)
Smoke Density	Less Than 450 (ASTM E-662)
Smoke Flame Spread	Meets Can S102.2
Colour Fastness	Meets 5.0 AATCC 16
Soil Resistance	Commercial Soil Protection
Stain Resistance	Commercial Stain Protection
Antimicrobial Protection	n/a
Tuft Bind	Meets C.G.S.B. 4-GP-129
Width	3.66

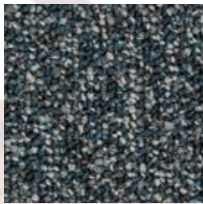
Color Names & Numbers

#76391	Amaretto	#58087	Blue Hydrangea
#46729	Maracas Red	#89828	Midnight Train
#68422	North Atlantic	#89864	Nova Scotia Grey
#16374	Patchouli	#88453	Raven
		#76850	Salamander

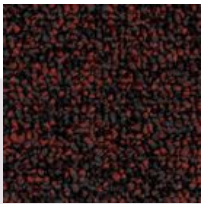
Axis II 28 J8233



#76391
Amaretto



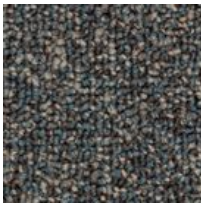
#58087
Blue Hydrangea



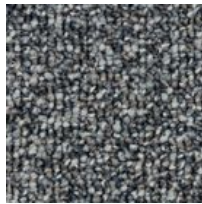
#46729
Maracas Red



#89828
Midnight Train



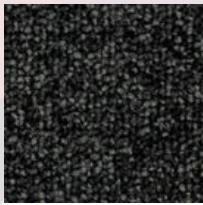
#68422
North Atlantic



#89864
Nova Scotia Grey



#16374
Patchouli



#88453
Raven



#76850
Salamander