

A large, stylized water splash graphic in shades of blue and white, arching over the top and curving down the right side of the page. It frames a central white rectangular area containing the product name and instructions.

# **BIYORK**

## HydroGen 6<sub>mm</sub>

INSTALL INSTRUCTIONS





**BY INNOVATION. BY DESIGN. BIYORK.**

Every aspect of our floors are designed in pursuit of performance ready for the world.

We Believe that everything we do is a movement towards an alluring combination of Dynamic Performance and Modern Craftsmanship. We do this by making every inch of our floors push the boundaries of Innovation forward with Beautiful Designs, Ease of Installation and Our Obsession For The Next Best Thing.

Together, we deliver the foundation that reflects your Personality and create the Ultimate Statement in any space.

This is BIYORK.

**TABLE OF CONTENTS**

BEFORE YOU START.....**3**

THE SUBFLOOR.....**3**

INSTALLATION.....**4**

MEASUREMENTS.....**4**

PROCEDURE.....**4**

FIRST ROW.....**5**

INSTALLATION ILLUSTRATIONS

ENGAGING & DISENGAGING.....**6**

HOW TO INSTALL.....**7-8**

INSTALL OVER RADIANT HEATING.....**8**

HYDROGEN FLOOR MAINTENANCE.....**10**

FOR CLICK PRODUCTS.....**10**

RIGHT STEPS TO MAINTENANCE.....**11**

HOMEOWNER RESPONSIBILITY.....**11**



- **HYDROGEN FLOORING** has a patented locking system making it ideal for a floating installation, however this product must be glued down when used for light commercial traffic applications.
- Avoid constant exposure to excessive temperatures or direct sunlight for extended periods of time, since this might cause planks to expand/separate or change colour. When selecting a **HYDROGEN FLOOR**, please consider these variables when selecting your flooring product.
- **HYDROGEN FLOORING** does not need to be acclimated if stored and installed in a temperate-controlled environment, maintain between 60°F and 85°F. Additional acclimation must be considered when temperatures mentioned above are not met. Store flat and fully supported during shipping and storage. It is not necessary to remove material from packaging while acclimating. Allow the product to condition in the room where installation is to take place at a constant temperature between 60°F and 85°F or 18°C - 29°C, for a period of 48 hours prior to installation.
- Slight variations in colour and structure are designed to enhance the natural appearance of the product. Work from multiple cartons during installation and mix the planks to create a more uniform appearance.
- Check HYDROGEN FLOORING for possible defects prior to the installation. Complaints can only be accepted before installation. Biyork will not be responsible, or will compensate for re-installation, flooring materials, removal and re-installing furniture, painting, etc. install, if the floor was installed having an obvious or even a minor visual defect.
- In facilities where walkers, wheelchairs (i.e.), residential and or with extended care use, or in facilities with movement of heavy displays, racks, dentist chairs, etc. These types of installations may exert extreme stress and compromise the locking system and or the face appearance.
- Installation Tools must be Rubber hammer, tape measure, pull bar, tapping block, cutting saw.

## THE SUBFLOOR

- Although **HYDROGEN** planks are water/moisture proof, they are not to be used as a moisture barrier. Your subfloor should be completely dry prior to installation. Keep in mind that constant moisture coming from the subfloor or topically, will cause mold/mildew to be trapped underneath the product, contributing to an unhealthy environment. Biyork will not warrant any flooring product based on damages created by excessive moisture.
- Subfloors must be clean, structurally sound and flat within 3/16" in 10 feet (4.7mm in 4m) radius or 1/8" in 6' radius (3.3mm in 1.8mm). The subfloor should not slope more than 1" per 6 feet in any direction. Cracks or holes must be filled with a fast-drying setting cement-based polymer modified patching compound or equivalent. Any unevenness over 3/16" (4.7mm) the high spots must be sanded down, low areas filled with patching compound to create a flat surface. Voids or humps in the subfloor will prevent the planks from locking properly. The subfloor must be clean of dirt, oil, glue residue, carpet tacks/staples or adhesive residue should be removed prior to installation. Some types of nails, such as common steel nails, may cause discoloration of the vinyl floor covering. Solvent based construction adhesives are known to stain vinyl floor coverings. All responsibility for discoloration problems caused by above mentioned products is not the responsibility of Biyork.
- **HYDROGEN** can be installed on existing firm floors (Linoleum, PVC), but all floating or textile floors must be removed. When laying the floor over existing ceramic tiles first level with fast setting cement-based polymer modified patching compound to fill in low areas such as grout joints.
- It is the installer responsibility to determine if the subfloor is dry and flat within standards to begin with the installation.
- **HYDROGEN** Planks and Tiles have an attached IXPE 1mm underlayment. Flooring must be glued down with a pressure sensitive adhesive when used for light traffic commercial applications.

## Different Production Runs:

- **HYDROGEN FLOORS** can have slight colour variations in between production runs. Before starting the installation, it is best to check the production run # which is indicated on the label on the carton. If you find that you have cartons from different production runs, it is highly recommended to open cartons and mix of planks from each different production run on your floor. This will result in a more natural looking floor.

Do NOT install your HYDROGEN FLOORS over soft subfloors such as carpet, floating floors or foam underlayment's, different than the ones recommended by the manufacturer.

- The use of pull bar and tapping block is recommended to ensure a successful install.

- **HYDROGEN FLOORS** provides a very tight fit. Proper care must be used to ensure all seams are tight at end of install. An unprofessional installation or use of improper tools can result in damage to the click-lock profiles.

## MEASUREMENTS

- Arrange with the Owner/Client on which direction the flooring should run since this influences the visual size ratio of the space. Install parallel to the longest wall or the main light-source is recommended for the best visual effect.

- Pre-plan the floor by measuring the room first. If the width of the last row is less than 2" (5cm) saw the first and the last plank in equal width.

- Snap the lines on the substrate to identify the layout reference points. Planks should be set using this reference to ensure boards are aligned and will lock together correctly.

- While HYDROGEN is waterproof, it will still contract or expand according to extreme weather conditions, therefore appropriate expansion gap must be kept. In large areas where flooring will span more than 40' long, an expansion gap should be used. Otherwise place expansion space in room-narrowing and in the door-rebate. Cover the expansion space with suitable moldings.

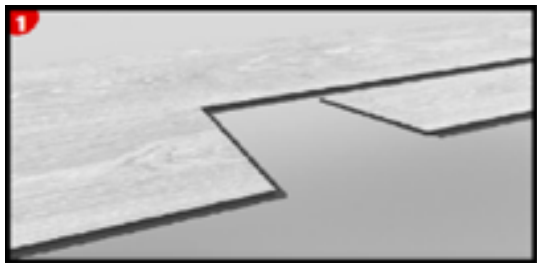
## PROCEDURE

- **HYDROGEN FLOORS** is designed to be installed utilizing the floating installation method. Never secure the planks to the subfloor when using the floating installation method. Do not install cabinets or other fixed objects on top of the HYDROGEN flooring. Undercut all doorjambes and make sure to provide proper expansion space 5/16" (8mm) around all vertical obstructions. Do not fasten base moldings and or transition strips to the planks.

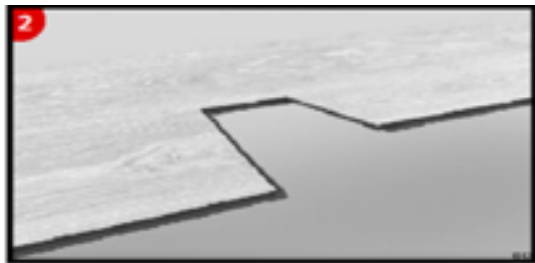
- **HYDROGEN** is approved for glue down installation over approved wood and concrete substrates and may be installed on, above and below grade. Please refer to the adhesive manufacturer's installation guidelines. Always follow adhesive manufacturer's recommendation for correct trowel notch, open time and spread rates.

First row:

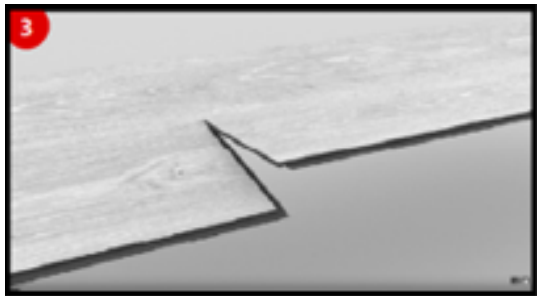
- Use spacers along the walls to maintain proper expansion space (5/16") and align the first plank. Start with the first plank in the left corner of the room, tongue-side facing out from the wall to the length and to the right on the width. Work from left to right.
- Position the following planks as an extension of the first plank.
- Cut to fit the last plank of the row. To do this you can use a utility knife to score the surface at the appropriate point and then break the tile over an edge. A laminate cutter or miter saw can be used as well to make the cut.



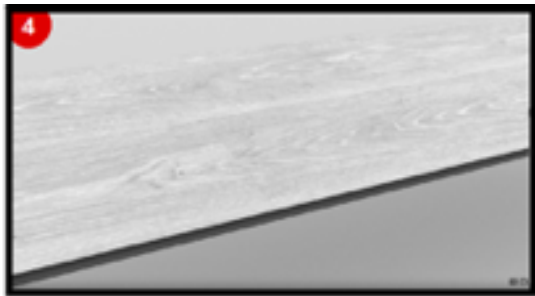
STEP 1: Lock long edge of plank by inserting tongue into groove at an angle and drop in place.



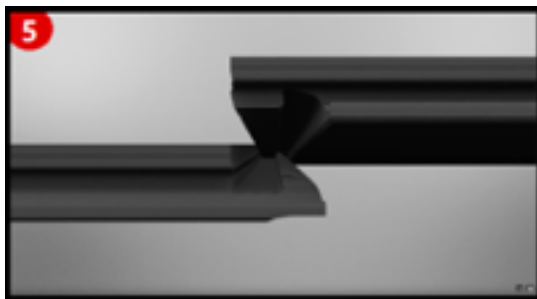
STEP 2: Make sure long edge of plank tongue into groove at an angle click



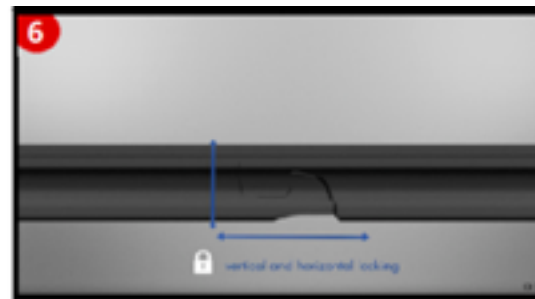
STEP 3: Slide plank follow long side toward until the short side tongue just touches the groove



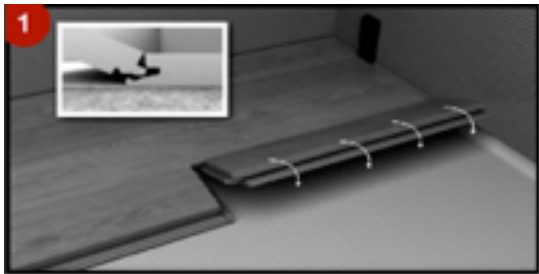
STEP 4: IMPORTANT! Use hammer or strike hard with your hand, make sure tongue into the groove and clic perfectly



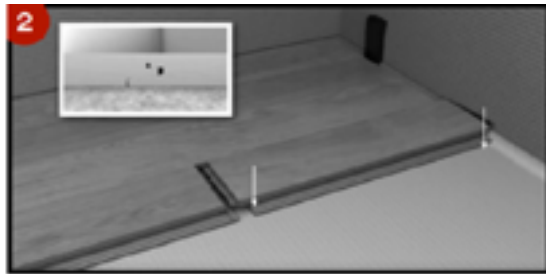
Unlocked style



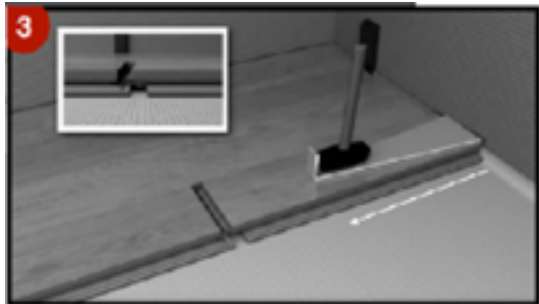
Fully locked style



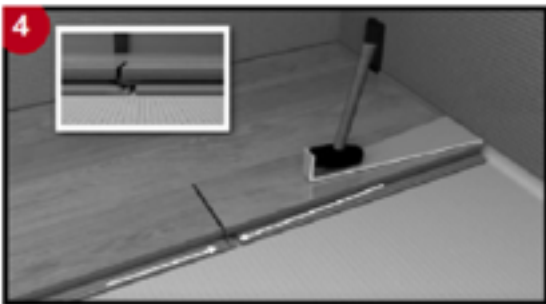
**STEP 1:** Lock long edge of plank by inserting tongue into groove at an angle and drop in place.



**STEP 2:** Slide plank toward end of previously installed plank until the tongue just touches the groove.

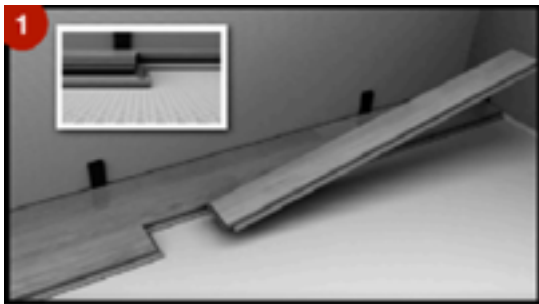


**STEP 3: IMPORTANT!** Use hammer and pull bar to tap short edge of plank to ensure a tight fit.

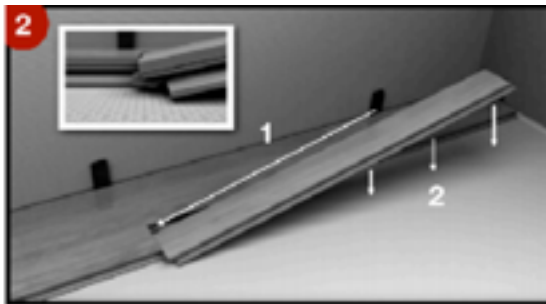


**STEP 4:** Make sure it fits perfectly, ANY GAPPING CAN COMPROMISE THE LOCKING SYSTEM!

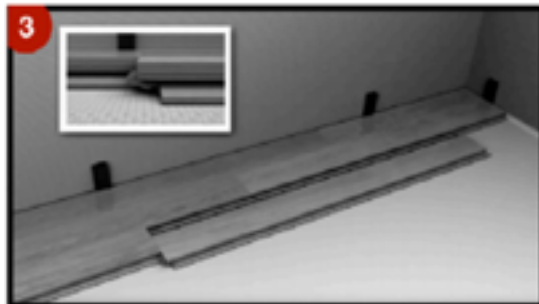
INSTALLATION TYPE 2 (ANGLE AND ANGLE)



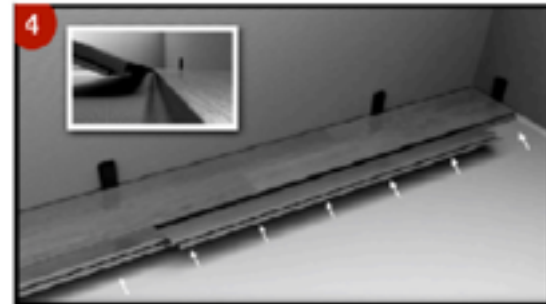
**STEP 1:** Lock short edge of plank by inserting tongue into groove



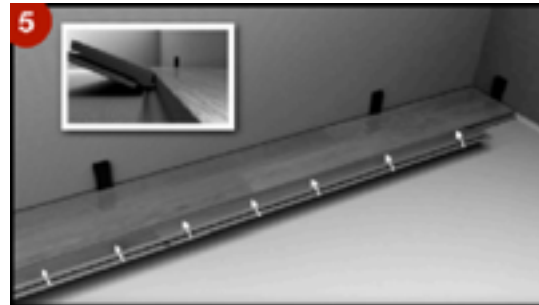
**STEP 2:** Make sure the tongue is fully inserted into the groove, then drop down the floor .



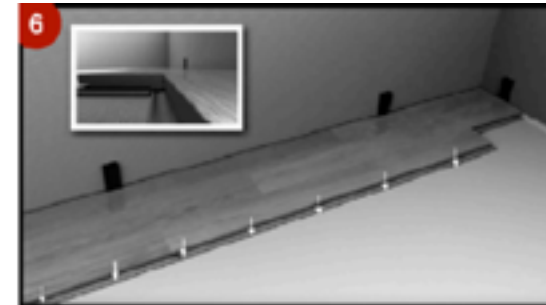
**STEP 3:** Lay the floor flat and keep a distance of 2-3cm from the behind plank.



**STEP 4:** Raise 2 pieces of floor at an angle of around 30. Make sure that the lock on the short side is not disengaged.



**STEP 5:** Keep the short side latches pushed parallel into the floor until tongue into groove



**STEP 6:** Make sure that the long side and short side tongue into the groove, and then drop down 2 pieces floor

**HYDROGEN FLOORS** are not recommended to be installed over any electrical radiant heating systems. Only hydronic radiant heated system using water are recommended. The maximum surface temperature of the floor must not exceed 81°F. These instructions must be followed:

- Before installing, make sure to test the heating system has been pressure tested and set to maximum heat (81°F) to force out any residual moisture and to make sure the system is working properly.
- Shut down the heating system at least 48 hours prior to installation.
- Keep room temperate between 68°F and 77°F during the installation.
- After flooring is installed, the temperature of the radiant heat floor may be increased gradually 72 hours after installation, in increments of 5°F, but the surface temperature should never exceed 81°F. Contact the radiant heating manufacturer for further recommendations.

The fundamentals of floor care include understanding the importance of cleaning your floors for safety, appearance and cleanliness and following a routine maintenance program that helps protect your floor investment and bottom line.

Likely, the first thing someone sees when entering your facility are your floors, which, depending on how clean or dirty they look, can shape their perceptions of how clean and sanitary the entire building is. Floors that appear dirty, scuffed or dull can convey the impression that the facility's cleanliness standards are lacking. Studies have shown that facility appearance ratings can drop as much as 75 percent if the floor shine creates a negative impression. And it's these first impressions people have that are the most important and usually the ones that last.

All floor coverings require some care to look their best; many problems can be prevented before they occur. The type and frequency of traffic on your floor covering will determine the frequency of maintenance needed. The type of flooring and even the colour will also have some bearing on how much care may be necessary. For example, solid colour floorings will show scuffs, scratches, dirt and general wear to a greater degree than multicolour's of chips or patterns. Of course, white or light colours will show staining to a greater degree than darker colours. For this reason, solid colour and white floorings should receive special attention concerning preventative maintenance and the amount of care provided. Proper selection when choosing the type and style of flooring will help prevent maintenance related problems after installation.

## **First time for optimal maintenance. Best within 24 hours of installation**

### **For CLICK HYDROGEN Products:**

- The adhesive should be given sufficient time to cure and establish a bond between the substrate and the HYDROGEN. Before walking or placing furniture and appliances on a new floor, be sure to set the room temperature after installation and leave the appropriate drying time according to the adhesive manufacturer's instructions.
- Thoroughly clean or vacuum to remove any residual glue from the surface. Mineral oil is very good for this.
- Do not clean/mow the floor for at least 48 hours after installation. After this period time, the floor can be wetted with a solution of pH neutral elastic floor cleaner or ammonia (4 parts water with 1 one ammonia). Carefully scrub with the recommended solution and a soft absorbent cloth to remove all scratches and excessive dirt.
- Thoroughly sweep or vacuum.
- Check the condition of all casters or rollers on the furniture before placing the furniture on the floor. Replace any worn ones.
- For heavy objects, it is recommended to use a smooth furniture slider or move the furniture to plywood or cardboard to avoid damaging the new floor.
- Cover the furniture legs with a felt pad to protect the HYDROGEN floor.
- Kitchen cabinets must be installed before the floor is installed. Do not install cabinets on top of HydroGen Flooring.



- Regular adherence to an effective maintenance plan should include daily removal of dirt and gravel by sweeping, dusting or vacuuming.
- Always test detergent in unobtrusive areas or unused samples before using the floor. Never use abrasive cleaners on HYDROGEN. The flat bottom surface of the legs of all furniture or appliances is not less than 2 inches (5 cm) wide. On the smaller diameter legs, use the same size protection as the legs. The casters have wheels of three (3) to five (5). The surface of the casters should be non-contaminating and at least 3/4" (1.9 cm) wide. A chair cushion cover is required.
- Do not use vinegar, one-step cleaner/polishing agent or oil soap on HYDROGEN products.
- Do not submerge the floor or install it in areas where water or high humidity is often present. A large number of mops, hoses and frequent watering can loosen the adhesive.
- Protect the floor from burns. The burning end of cigarettes, matches or other extremely hot items can damage HYDROGEN products.
- Protect the floor from all residual dust or abrasion by using a non-staining mat at all channels/ports. This will collect traced dirt, sand and pebbles and absorb moisture. Before entering the room, take some time to remove any Tracking-in dirt from the soles. Avoid using rubber pads as some rubber compounds will permanently stain HYDROGEN products. Avoid finding tar or bitumen in the driveway as this will also discolour the HYDROGEN product. Using stilettos on the floor can cause permanent damage. HYDROGEN products have good stain resistance and are not affected by most common household leaks; however, any spillage should be removed immediately. On the floor, there is a greater risk of permanently soiling HYDROGEN products.
- The temperature after installation should be between 65 °F and 85 °F (18.3 °C to 29.4 °C).
- The HYDROGEN floor must be protected from direct sunlight. We recommend using UV protection membranes, blinds or curtains on all windows that have direct sunlight to ensure that the product does not overheat. HYDROGEN floor coverings exposed to excessive heat can be affected by thermal expansion, which can cause the floor to bend or undulate. When the floor is exposed to direct sunlight, we're not responsible for any claims for damages related to installation failure or installation failure.

### Homeowner responsibility

In order to maintain the warranty and ensure a quick and easy warranty, the homeowner is responsible for the following tasks:

- Keep the board/tile of (5-8) HYDROGEN products for testing after installation.
- Retain and be able to provide original sales receipts or documentation indicating product purchase and installation date certificates.
- Make sure the floor is installed according to the installation instructions.
- Keep a list of cleaners used to maintain the floor.

**www.BIYORKCANADA.COM**

Biyork product specifications are subject to change.  
Please always refer to a physical sample for reference.  
All rights reserved 2020.