



## Flush Exhaust Mount [Lite]

### INSTALL GUIDE

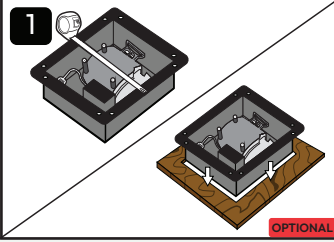


Scan to unlock your free warranty

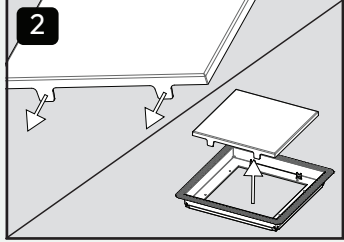
Or – on your phone? Press + hold the QR code to go straight there.



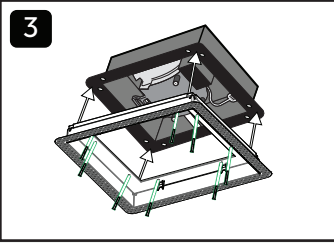
Walls + ceilings  
Do not use on floors



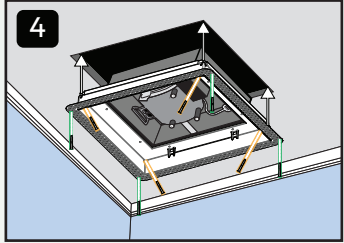
1 Measure fan to ensure fit. If fan is smaller than the opening of **Framed Exhaust Mount**, use plywood as an adapter to increase flange size.



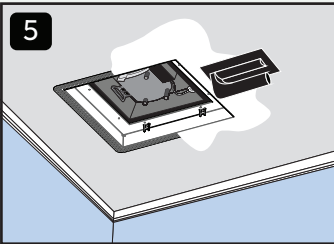
2 Disengage **plate**.



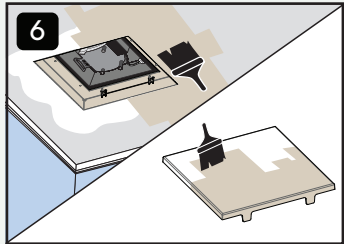
3 Fasten fan to **Exhaust Mount**. Secure with screws.



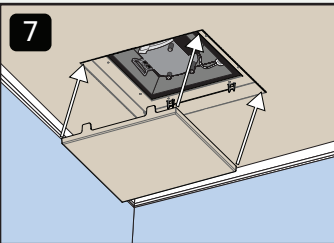
4 Dry fit **body** into opening. Secure corners to ceiling frame using included screws. Add drywall screws on bead as necessary.



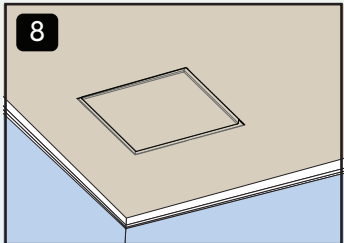
5 Use mud to cover flange surface. Wait to dry. Sand so surface transitions smoothly. Repeat step as needed.



6 Paint or wallpaper inside of **body + plate** to match surrounding walls. Do not paint fan.



7 Align tabs on **body + plate**, push to snap into place.



8 That's it! Fittes to perfection.



# Flush Exhaust Mount [Luxe]

## INSTALL GUIDE

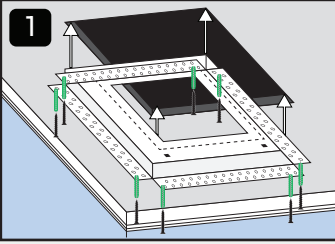


Scan to unlock your free warranty

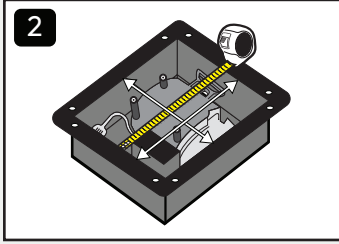
Or — on your phone? Press + hold the QR code to go straight there.



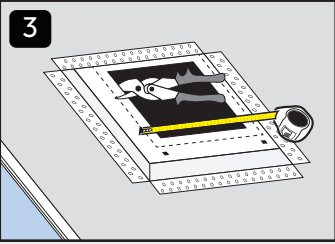
Walls + ceilings  
Do not use on floors



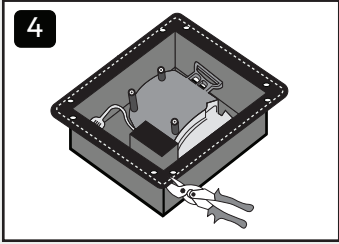
Mount **body** into opening. Fasten with screws as needed.



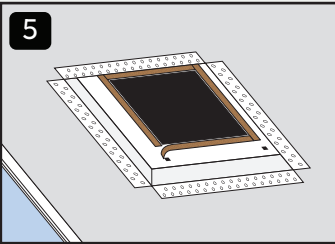
Measure fan to check if adjustments need to be made to the **Exhaust Mount** opening.



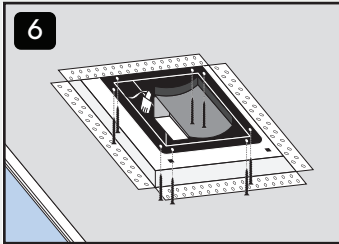
Measure **body**. If adjustment is needed, cut along perforated edges according to size in step 2.



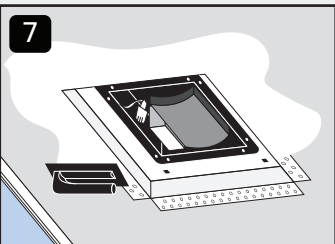
Some fan flanges may obstruct holes needed to slide in the **plate** (step 9). If this is the case, trim fan flanges.



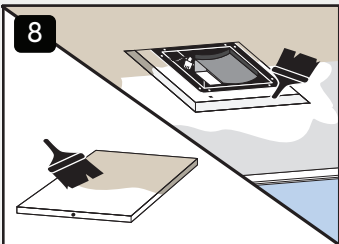
Stick provided **sound-dampening strips** along the edges of the opening.



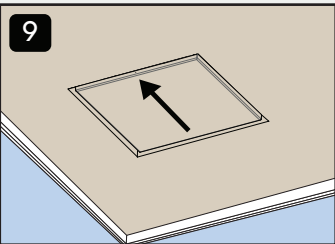
Mount fan + fasten with screws. **Sound-dampening strips** should be sandwiched between fan and **body**.



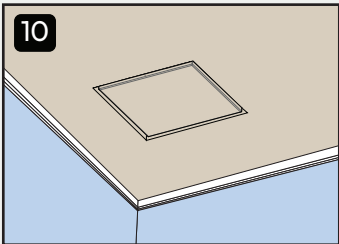
Use mud to cover flange surfaces. Wait to dry. Sand and repeat as needed.



Paint or wallpaper inside of **body** + **plate** to match surrounding walls. Do not paint fan.



Insert and slide **plate** into place. Use hole on the side of the **plate** as a guide.



That's it! Fittes to perfection.