



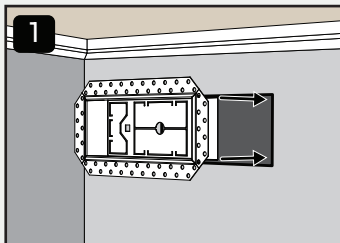
Flush Wall Vent

INSTALL GUIDE

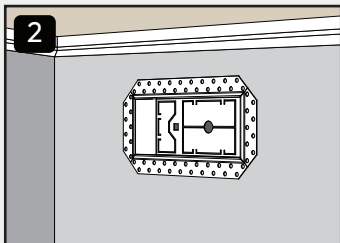


Scan to unlock
your free warranty

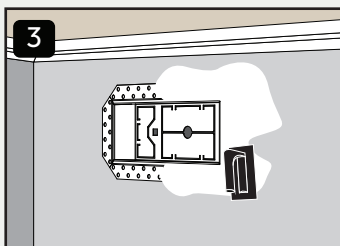
Or — on your phone?
Press + hold the QR code to
go straight there.



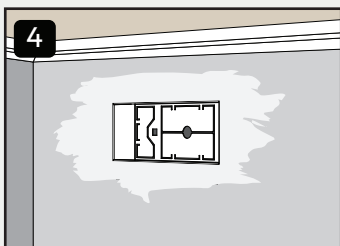
Dry-fit **body** into duct opening.



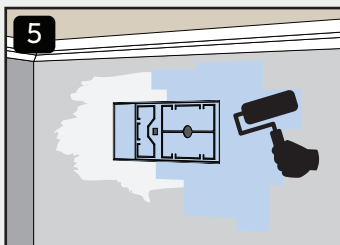
Fasten to drywall. for **Luxe** model (metal) use drywall screws. For **Lite** model (plastic) use staples.



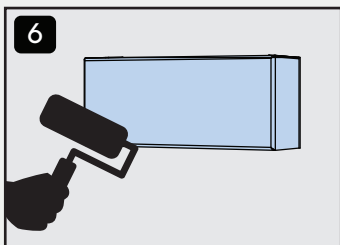
Use mud to cover flange surface.
Wait to dry.



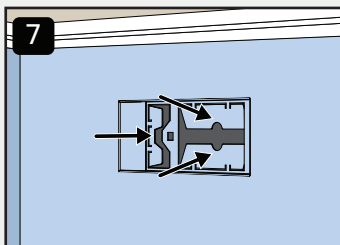
Sand so surface transitions
smoothly. Repeat steps 3 + 4
as needed.



Paint or wallpaper inside of **body**
and to match surrounding walls.

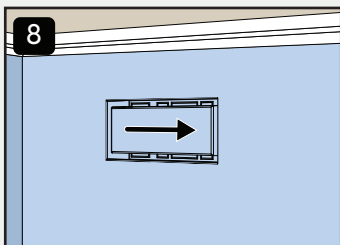


Paint or wallpaper the **plate** to
match.



To adjust airflow, remove **plate**
and bend dampers. For optimal air
flow, push dampers past 90°.

For **Lite** versions of this product,
dampers are not included. Optional
dampers are sold separately.



Insert **plate** in place. That's it!
Fittes to perfection.