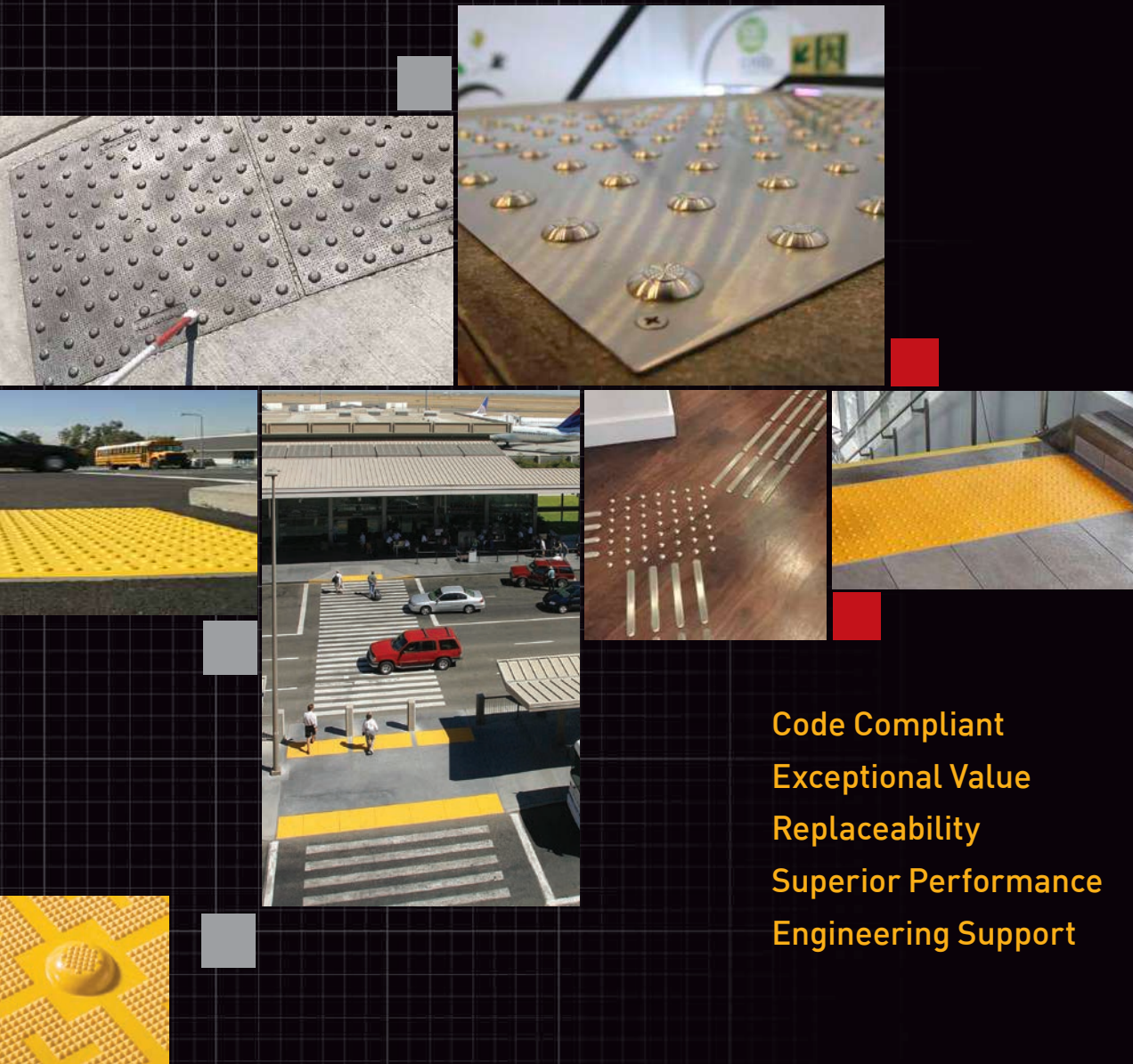


**KINESIK**

ENGINEERED PRODUCTS

# Tactile Warning Systems



Code Compliant  
Exceptional Value  
Replaceability  
Superior Performance  
Engineering Support

Kinesik Engineered Products Incorporated  
[www.kinesik.ca](http://www.kinesik.ca)



Kinesik Engineered Products Incorporated is a global leader of products that provide compliance to accessibility and life safety codes for the built environment. With over 40 years experience as a manufacturer, Kinesik's leading research insights and progressive product development have led to constant innovation and continuous improvement.

Our experience in building code compliance, from involvement in code councils to innovation with standards organizations has fueled our commitment to constantly improve our product offerings. We maximize efficiencies in manufacturing and global materials sourcing with an eye to enhanced engineering in order to deliver exceptional value.

Our product offerings of alternative methodologies are specialized for solving technical projects in scope and complexity as in our Armor Deck® Transit Platform Systems, Nexatherm® Snow and Ice Heated Solutions and Ecoglo® photoluminescent emergency egress systems. All of our products are supported with engineering service in-house and in the field, as well as, our highly skilled factory trained installation crews available for turnkey solutions or contractor support.

Our customers have come to trust Kinesik and our brands as the premiere name in built environment compliance products that help mitigate their risk and liability.

Our technical representatives are available across Canada to assist you in finding the best products and installation advice to solve your safety and accessibility code issues.

## Introducing the **ultimate solution™** in detectable warning systems.

With 25 years of leading research insights and progressive product development experience in this product segment, Kinesik Engineered Products Incorporated has combined proven polymer processing and material technologies with innovative and intelligent design features to create the ultimate in detectable warning tiles.

Maximized efficiencies in manufacturing, materials sourcing and product specifications deliver the most cost-effective solution in the industry.

Our Brands:

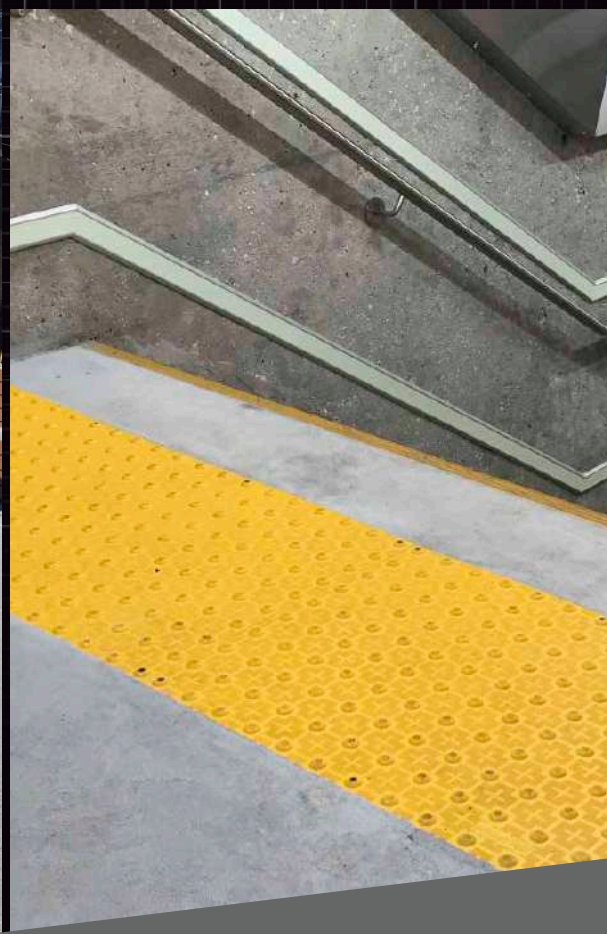




# Table of Contents

Compliance Information .....	4
CNIB Clearing Our Path .....	5
Armor Tile	
Armor Tile Cast in Place .....	6
Armor Tile Surface Applied .....	8
Armor Tile Modular Paver .....	10
Access Tile	
Access Tile Cast in Place .....	12
Access Tile Surface Applied .....	14
Access Tile Surface Applied FR .....	16
Access Tile Wayfinding .....	18

Advantage Tactile	
Advantage Cast Iron .....	20
Advantage Cast Iron Premier .....	22
Advantage One Domes and Bars .....	24
Advantage One Plate .....	26
Elan Tile .....	28
Eon Tile .....	30
TripStop Sidewalk Hinge Joint System .....	32
Ecoglo Wayfinding Products .....	33
Application Gallery .....	38



# Canadian Accessibility

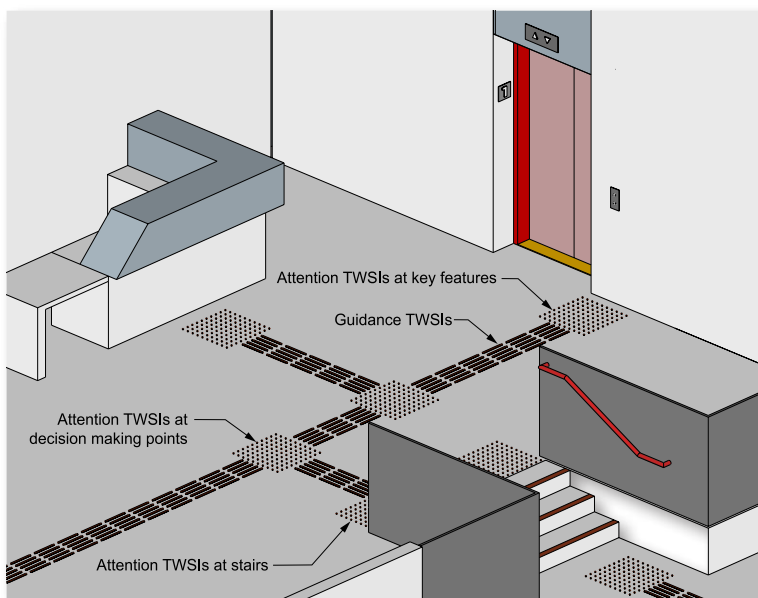
## Kinesik Engineered Products Incorporated is in full compliance with Canadian Accessibility Codes.

The full product range of Kinesik tactile walking surface indicators meet the most recent AODA, CSA, ISO, provincial and national building codes.

Kinesik Engineered Products Incorporated is your one stop source for all tactile systems for internal and external applications.

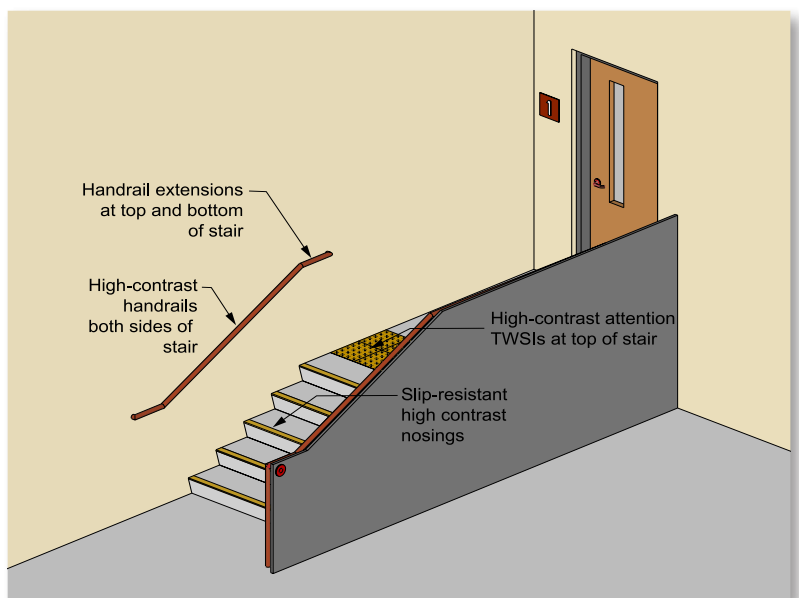
Only Kinesik provides a complete range of products designed for safety, convenience and code compliance.

### Ontario Building Code Compliance Tactile Warning Surface Indicators (TWSI)



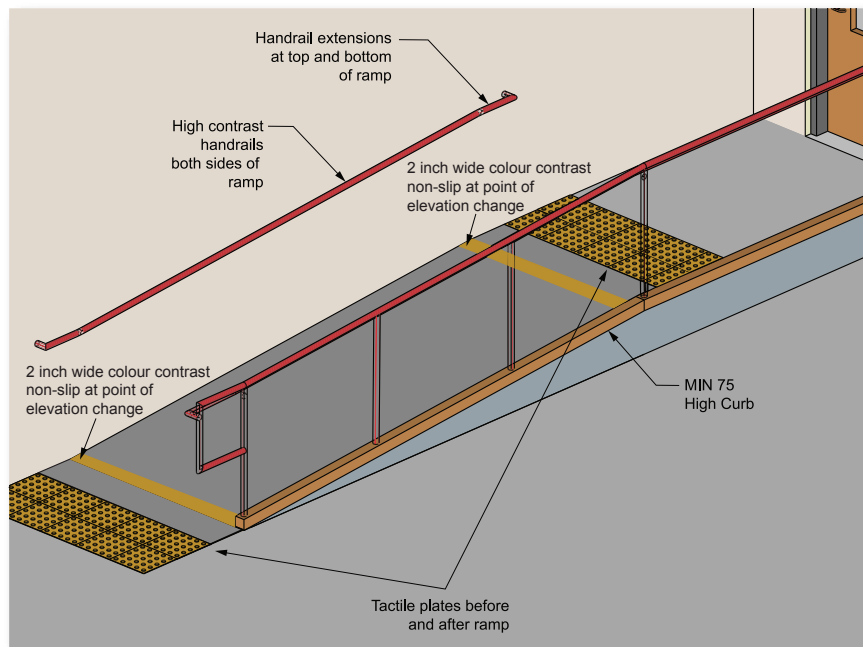
The above TWSI illustration incorporates both guidance/wayfinding and attention TWSI indicators. Guidance/wayfinding TWSIs provide information to locate reception desk, stairs and elevator entrances.

Attention TWSIs are used at changes in direction along the guidance path and at top of stairs.



The above illustration shows the Ontario Building Code requirements of TWSI for the design of a typical stairway that addresses the needs of individuals with vision loss.

## Ontario Building Code Compliance Tactile Warning Surface Indicators (TWSI)

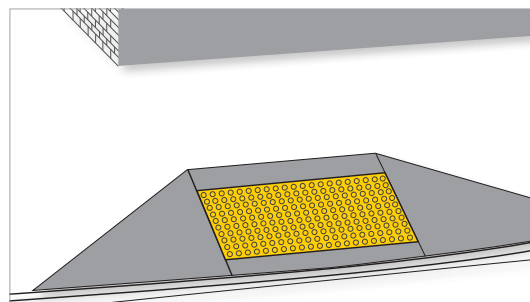


This drawing illustrates the Ontario Building Code requirements for the design of wheelchair access ramps that address the needs of individuals with vision loss.

The TWSI is prominent at the top and bottom of the ramp.

There are two possible situations to inform persons who are walking over tactile walking plates:

1. An attention TWIS indicator (truncated domes) signals a need for caution at a change in elevation, a vehicular route, train tracks, etc.
2. A directional guidance/wayfinding indicator (linear bar surface) facilitates wayfinding in open areas and indicates an alternative route that may be taken.



## Clearing Our Path

### Technical Design Requirements to Facilitate the Development of Accessible Environments for Persons with Vision Loss

Working with our CNIB partners, we have produced an accessible reference source named **Clearing Our Path** which is located and downloadable from [Kinesik.ca](http://Kinesik.ca) or **click the button below to view the guide.**

**CLEARING OUR PATH  
TECHNICAL DESIGN GUIDE**

The technical design information within the **Clearing Our Path** resource guide is derived from a number of sources including: the National Building Code of Canada, CAN/CSA B651 Accessible Design for the Built Environment, ISO/FDIS 21542 Building Construction – Accessibility and Usability of the Built Environment and ISO 23599.



# Armor-Tile®

## Tactile Systems

### Cast in Place

## Setting the Standard for Durability & Detectability in Tactile Systems

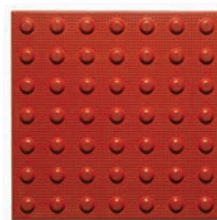
Armor-Tile® Cast in Place is the world leader in tactile walking surface indicators systems. Manufactured of a diamond-hard vitrified polymer composite, Armor-Tile® truncated dome and wayfinding bar tiles are the industry leader for durability, weather and wear resistance. Armor-Tile® also is available as a replaceable cast in place (Herculite Series), modular paver, cast in place and directional bars.

Tactile Walking Surface Indicators (TWSI) products for the following and many more applications:

- Curb Ramps
- Pedestrian Crossings
- Vehicular Passage Ways
- Escalator Approaches
- Parking Areas
- Transit Platforms
- Top of Stair Landings – Wheelchair Ramps
- Multi-Modal Transit Stations

#### COMPLIANCE

Kinesik Engineered Products Incorporated is in full compliance with Canadian Accessibility Codes. The full product range of Kinesik tactile walking surface indicators meet the most recent AODA, CSA, ISO, provincial and national building codes. Kinesik Engineered Products Incorporated is your one stop source for all tactile systems for internal and external applications. Only Kinesik provides a complete range of products designed for safety, convenience and code compliance.



#### PRODUCT FEATURES

- The most cost effective method of new curb ramps
- A smooth transition that meets Canadian Accessibility Codes
- Light weight and easy to handle
- Easily cut to conform to various sizes and radius ramps
- Available in seven (7) different sizes to meet your needs
- Comes in ten (10) standard colours with Federal colour identification numbers
- Advanced Warning Strip – 75 mm x 1220 mm can be used to create a colour contrast around the TWSI
- 5 year manufacturer's warranty

**ARMOR TILE  
RADIUS CALCULATOR**

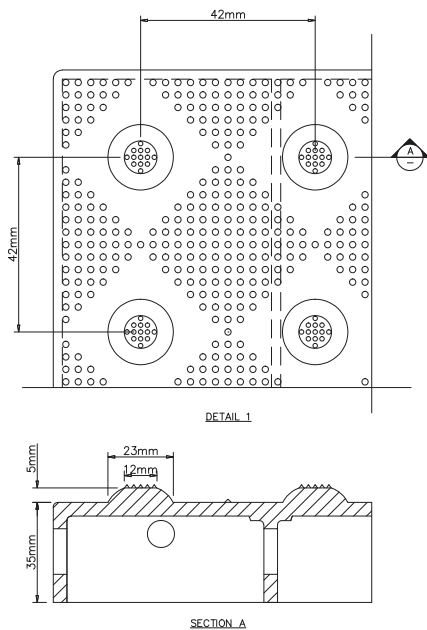
Radius Calculator is found on the [Kinesik.ca](http://Kinesik.ca) Resources Page

# Armor-Tile®

## Tactile Systems



**Tactile Walking Surface Indicator (TWSI) with Truncated Domes**



### STANDARD CAST IN PLACE SIZES

SIZE	PRODUCT CODE	SIZE	PRODUCT CODE
12"x12" (305x305 mm)	ADA-C-1212	24"x60" (610x1524 mm)	ADA-C-2460
24"x24" (610x610 mm)	ADA-C-2424	36"x48" (915x1220 mm)	ADA-C-3648
24"x36" (610x915 mm)	ADA-C-2436	36"x60" (915x1524 mm)	ADA-C-3660
24"x48" (610x1220 mm)	ADA-C-2448		

### PROFESSIONAL ASSOCIATIONS

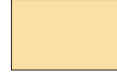
Kinesik is proud to be a member of the following organisations



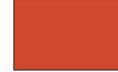
### STANDARD COLOURS



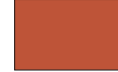
Federal Yellow  
Code: YW



Ochre Yellow  
Code: OCR



Brick Red  
Code: RD



Colonial Red  
Code: COL



Safety Red  
Code: SR



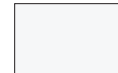
Ocean Blue  
Code: BL



Dark Grey  
Code: DG



Light Grey  
Code: LG



Pearl White  
Code: WH



Onyx Black  
Code: BK

### TILE SPECIFICATIONS

Test	Description	Requirements
AASHTO HS20-44	Wheel Load Tests	4,722 kg
ASTM D 695	Compressive Strength	≥ 190 MPa
ASTM D 790	Flexural Strength	≥ 172 MPa
ASTM D 638	Tensile Strength	≥ 131 MPa
ASTM D 696	Coefficient of Thermal Expansion	5.0 x 10 <sup>-6</sup> /°C
ASTM C 1028	Static Coefficient of Friction	≥ 0.8 wet/dry
ASTM E 84	Flame Spread Index	≤ 25
ASTM D 570	Water Absorption	≤ 0.05%
ASTM C 501	Abrasive Wear Index lw	> 500
ASTM G 155	Accelerated Weathering (3000 hrs)	ΔE < 5
ASTM C 1026	Freeze/thaw	No effect
ASTM B 117	Salt Spray (300 hrs)	No effect
ASTM D 1037	Accelerated Aging Cycle Testing	No effect
ASTM D 543	Chemical Resistance	No effect
ASTM D 2486	Abrasive Scrub Test	1.5 mm

Specifications are subject to change.

### APPLICATIONS

#### Tactile Attention Indicator Truncated Domes

- Accessible curb ramps align with the safe pedestrian crossing route across the vehicle roadway.
- An entry into a vehicular route or area where no curbs or other elements separate it from pedestrian route such as curb ramps, wheel chair ramps, top of stairs/escalators and blended transitions.
- An unprotected drop off edge, such as a transit platform where the change in elevation is greater than 250mm or the slope is steeper than in a ratio of 1:3 (33%).
- The unprotected edges of a reflecting pool.

#### Tactile Direction Indicator Wayfinding Bars

- Located in large open floor areas, such as shopping malls or transportation terminals, to facilitate wayfinding by indicating the primary routes of travel.
- The indicated routes should lead from the entrance to major destinations, such as an information kiosk, registration desk, stairway, elevator, escalators, or to store or service doors.

# Armor-Tile®

## Tactile Systems

### Surface Applied

## Setting the Standard for Durability & Detectability in Tactile Systems

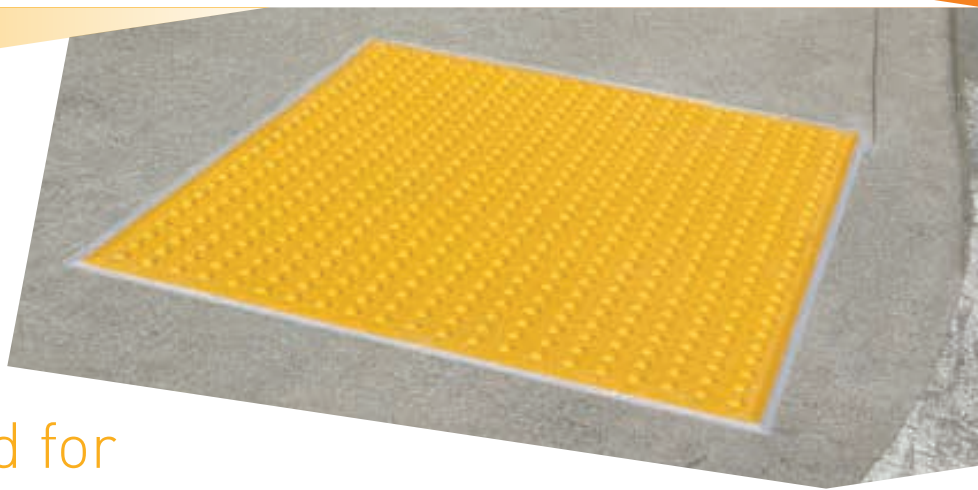
Armor-Tile® Surface Applied is the world leader in tactile walking surface indicators systems. Manufactured of a diamond-hard vitrified polymer composite, Armor-Tile® truncated dome and wayfinding bar tiles are the industry leader for durability, weather and wear resistance. Armor-Tile® also is available as a replaceable cast in place (Herculite Series), modular paver, cast in place and directional bars.

Tactile Walking Surface Indicators (TWSI) products for the following and many more applications:

- Curb Ramps
- Pedestrian Crossings
- Vehicular Passage Ways
- Escalator Approaches
- Parking Areas
- Transit Platforms
- Top of Stair Landings – Wheelchair Ramps
- Multi-Modal Transit Stations

#### COMPLIANCE

Kinesik Engineered Products Incorporated is in full compliance with Canadian Accessibility Codes. The full product range of Kinesik tactile walking surface indicators meet the most recent AODA, CSA, ISO, provincial and national building codes. Kinesik Engineered Products Incorporated is your one stop source for all tactile systems for internal and external applications. Only Kinesik provides a complete range of products designed for safety, convenience and code compliance.



#### PRODUCT FEATURES

- A cost effective method of retrofitting existing sidewalks
- A complete system is shipped with the tiles; adhesive & fasteners
- Beveled edges make for a smooth transition that meets Canadian Accessibility Codes
- Light weight and easy to handle
- Easily cut to conform to various sizes and radius ramps
- Available in six (6) different sizes to meet your needs
- Comes in ten (10) standard colours with Federal colour identification numbers
- 5 year manufacturer's warranty

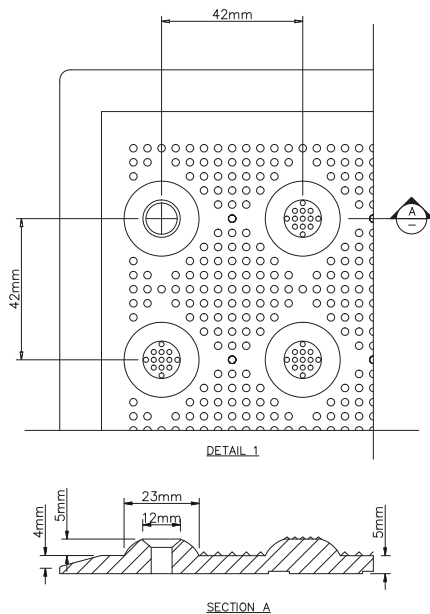
**ARMOR TILE  
RADIUS CALCULATOR**

Radius Calculator is found on the [Kinesik.ca](http://Kinesik.ca) Resources Page





**Tactile Walking Surface Indicator (TWSI) with Truncated Domes**



### STANDARD SURFACE APPLIED SIZES

SIZE	PRODUCT CODE	SIZE	PRODUCT CODE
24"x24" (610x610 mm)	ADA-S-2424	24"x60" (610x1524 mm)	ADA-S-2460
24"x36" (610x915 mm)	ADA-S-2436	36"x48" (915x1220 mm)	ADA-S-3648
24"x48" (610x1220 mm)	ADA-S-2448	36"x60" (915 x1524 mm)	ADA-S-3660

### PROFESSIONAL ASSOCIATIONS

Kinesik is proud to be a member of the following organisations



### STANDARD COLOURS

Federal Yellow Code: YW	Ochre Yellow Code: OCR	Brick Red Code: RD	Colonial Red Code: COL	Safety Red Code: SR
Ocean Blue Code: BL	Dark Grey Code: DG	Light Grey Code: LG	Pearl White Code: WH	Onyx Black Code: BK

### TILE SPECIFICATIONS

Test	Description	Requirements
AASHTO HS20-44	Wheel Load Tests	4,722 kg
ASTM D 695	Compressive Strength	≥ 190 MPa
ASTM D 790	Flexural Strength	≥ 172 MPa
ASTM D 638	Tensile Strength	≥ 131 MPa
ASTM D 696	Coefficient of Thermal Expansion	5.0 x 10 <sup>-6</sup> /°C
ASTM C 1028	Static Coefficient of Friction	≥ 0.8 wet/dry
ASTM E 84	Flame Spread Index	≤ 25
ASTM D 570	Water Absorption	≤ 0.05%
ASTM C 501	Abrasive Wear Index lw	> 500
ASTM G 155	Accelerated Weathering (3000 hrs)	ΔE < 5
ASTM C 1026	Freeze/thaw	No effect
ASTM B 117	Salt Spray (300 hrs)	No effect
ASTM D 1037	Accelerated Aging Cycle Testing	No effect
ASTM D 543	Chemical Resistance	No effect
ASTM D 2486	Abrasive Scrub Test	1.5 mm

Specifications are subject to change.

### APPLICATIONS

#### Tactile Attention Indicator Truncated Domes

- Accessible curb ramps align with the safe pedestrian crossing route across the vehicle roadway.
- An entry into a vehicular route or area where no curbs or other elements separate it from pedestrian route such as curb ramps, wheel chair ramps, top of stairs/escalators and blended transitions.
- An unprotected drop off edge, such as a transit platform where the change in elevation is greater than 250mm or the slope is steeper than in a ratio of 1:3 (33%).
- The unprotected edges of a reflecting pool.

#### Tactile Direction Indicator Wayfinding Bars

- Located in large open floor areas, such as shopping malls or transportation terminals, to facilitate wayfinding by indicating the primary routes of travel.
- The indicated routes should lead from the entrance to major destinations, such as an information kiosk, registration desk, stairway, elevator, escalators, or to store or service doors.

# Armor-Tile®

## Tactile Systems

### Modular Paver

### Heavy Duty Strength

Armor-Tile® Modular Paver is manufactured of a diamond-hard vitrified polymer composite and filled with high strength polymeric concrete to make the tile incredibly dense and strong. Due to this innovative combination of our diamond-hard vitrified polymer and high strength polymeric concrete, the Armor-Tile® Modular Paver tiles are the industry leader for durability, weather and wear resistance. Installation is a breeze, the Armor-Tile® high strength modular paver can be dry laid on compacted fill or set in a grout bed or drypac.

Tactile Walking Surface Indicators (TWSI) products for the following and many more applications:

- Curb Ramps
- Pedestrian Crossings
- Vehicular Passage Ways
- Escalator Approaches
- Parking Areas
- Transit Platforms
- Top of Stair Landings – Wheelchair Ramps
- Multi-Modal Transit Stations

#### COMPLIANCE

Kinesik Engineered Products Incorporated is in full compliance with Canadian Accessibility Codes. The full product range of Kinesik tactile walking surface indicators meet the most recent AODA, CSA, ISO, provincial and national building codes. Kinesik Engineered Products Incorporated is your one stop source for all tactile systems for internal and external applications. Only Kinesik provides a complete range of products designed for safety, convenience and code compliance.

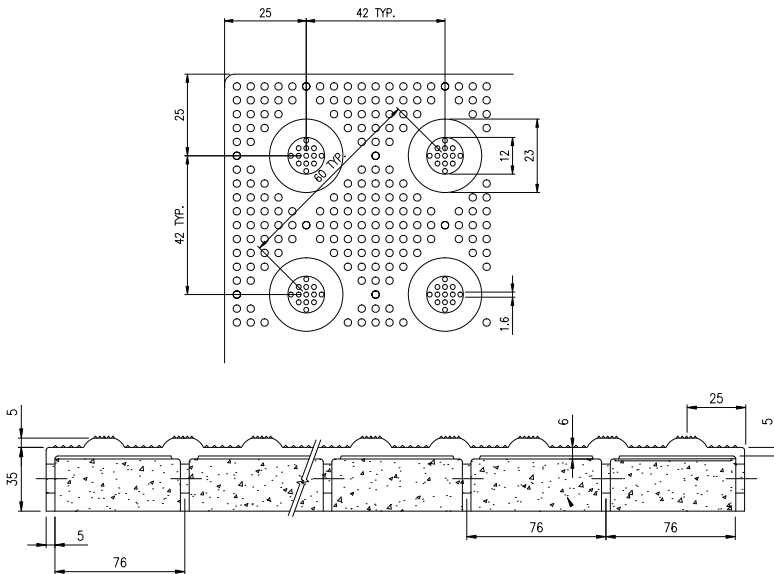


#### PRODUCT FEATURES

- A cost effective method of new curb ramps and platform edges
- A smooth transition that meets Canadian Accessibility Codes
- Filled with high strength polymeric concrete
- Easily cut to conform to various sizes and radius ramps
- Available in ten (10) standard colours
- Available in two (2) different sizes to meet your needs
- High strength modular paver can be dry laid on compacted fill or set in a grout bed or drypac
- Sustains dynamic vehicle loading, AASHTO HS20-44 Wheel Load Test
- Easily cut to conform to angled and radius ramps



**Tactile Walking Surface Indicator (TWSI) with Truncated Domes**



### STANDARD MODULAR PAVER SIZES

SIZE	PRODUCT CODE	SIZE	PRODUCT CODE
12"x12" (305x305 mm)	ADA-M-1212	24"x24" (610x610 mm)	ADA-M-2424

### PROFESSIONAL ASSOCIATIONS

Kinesik is proud to be a member of the following organisations



### STANDARD COLOURS

Federal Yellow Code: YW	Ochre Yellow Code: OCR	Brick Red Code: RD	Colonial Red Code: COL	Safety Red Code: SR
Ocean Blue Code: BL	Dark Grey Code: DG	Light Grey Code: LG	Pearl White Code: WH	Onyx Black Code: BK

### TILE SPECIFICATIONS

Test	Description	Requirements
AASHTO HS20-44	Wheel Load Tests	4,722 kg
ASTM D 695	Compressive Strength	≥ 190 MPa
ASTM D 790	Flexural Strength	≥ 172 MPa
ASTM D 638	Tensile Strength	≥ 131 MPa
ASTM D 696	Coefficient of Thermal Expansion	5.0 x 10 <sup>-6</sup> /°C
ASTM C 1028	Static Coefficient of Friction	≥ 0.8 wet/dry
ASTM E 84	Flame Spread Index	≤ 25
ASTM D 570	Water Absorption	≤ 0.05%
ASTM C 501	Abrasive Wear Index lw	> 500
ASTM G 155	Accelerated Weathering (3000 hrs)	ΔE < 5
ASTM C 1026	Freeze/thaw	No effect
ASTM B 117	Salt Spray (300 hrs)	No effect
ASTM D 1037	Accelerated Aging Cycle Testing	No effect
ASTM D 543	Chemical Resistance	No effect
ASTM D 2486	Abrasive Scrub Test	1.5 mm

Specifications are subject to change.

### APPLICATIONS

Tactile Attention Indicator  
**Truncated Domes**

- An entry into a vehicular route or area where no curbs or other elements separate it from pedestrian route such as curb ramps, wheel chair ramps, top of stairs/escalators and blended transitions.
- An unprotected drop off edge, such as a transit platform where the change in elevation is greater than 250mm or the slope is steeper than in a ratio of 1:3 (33%).
- The unprotected edges of a reflecting pool.



## Replaceable Cast in Place

## The Most Innovative System

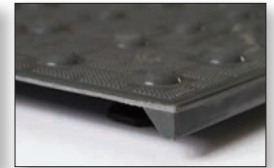
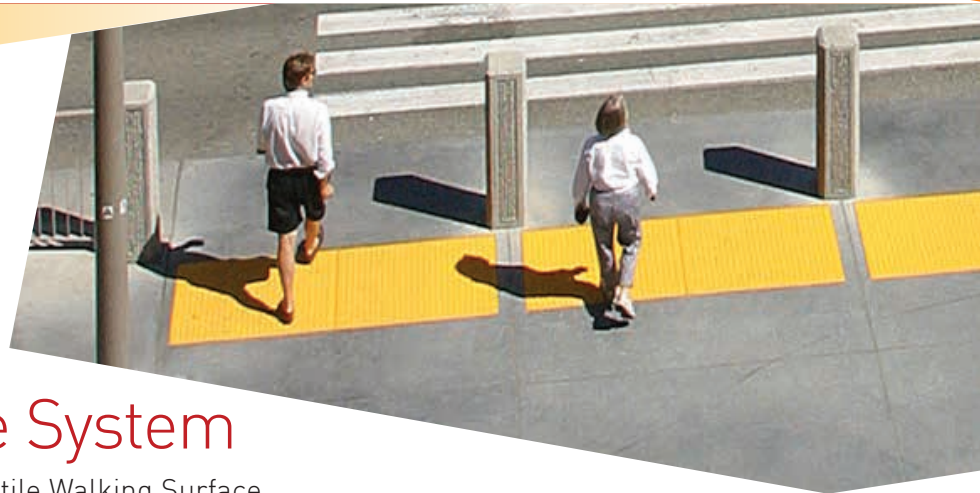
Introducing the **Ultimate Solution™** in Tactile Walking Surface Indicators (TWSI). Access® Tile Replaceable Cast in Place has combined proven engineered polymers, processing and material technologies with innovative and intelligent design features to create the ultimate replaceable tactile walking surface indicators. Maximized efficiencies in manufacturing, materials sourcing and product specifications deliver the most cost-effective solution in the industry. Access® Tile truncated dome and wayfinding bar tiles are the industry leader for durability, weather and wear resistance and are available as surface applied tiles and directional bars.

Tactile Walking Surface Indicators (TWSI) products for the following and many more applications:

- Curb Ramps
- Vehicular Passage Ways
- Parking Areas
- Top of Stair Landings – Wheelchair Ramps
- Pedestrian Crossings
- Escalator Approaches
- Transit Platforms
- Multi-Modal Transit Stations

### COMPLIANCE

Kinesik Engineered Products Incorporated is in full compliance with Canadian Accessibility Codes. The full product range of Kinesik tactile walking surface indicators meet the most recent AODA, CSA, ISO, provincial and national building codes. Kinesik Engineered Products Incorporated is your one stop source for all tactile systems for internal and external applications. Only Kinesik provides a complete range of products designed for safety, convenience and code compliance.



### PRODUCT FEATURES

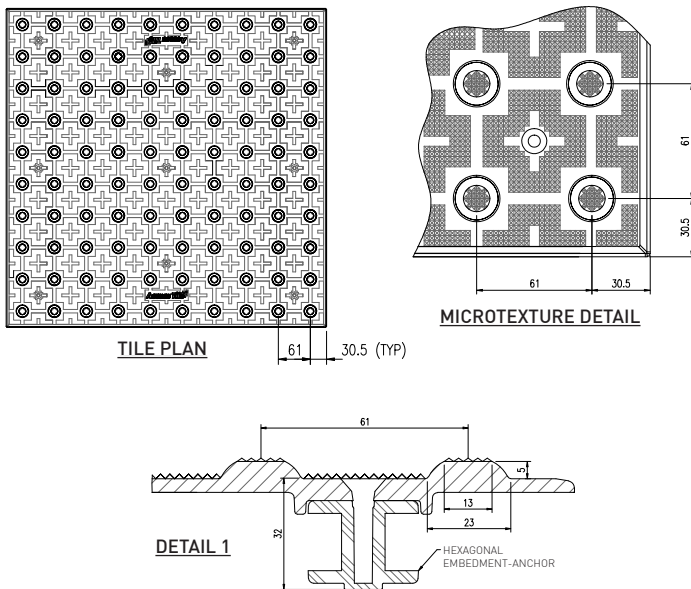
- The most cost effective method of new curb ramp applications
- A smooth transition that meets Canadian Accessibility Codes
- Light weight and easy to handle
- Easily cut to conform to various sizes and radius ramps
- Available as a standard radius tile
- Available in eight (8) different sizes to meet your needs
- Comes in six (6) standard colours with Federal colour identification numbers
- 5 year manufacturer's warranty

### ACCESS TILE RADIUS CALCULATOR

Radius Calculator is found on the [Kinesik.ca](http://www.kinesik.ca) Resources Page



**Tactile Walking Surface Indicator (TWSI) with Truncated Domes**



## STANDARD CAST IN PLACE SIZES

SIZE	PRODUCT CODE	SIZE	PRODUCT CODE
12"x12" (305x305 mm)	ACC-R-1212	24"x60" (610x1524 mm)	ACC-R-2460
24"x24" (610x610 mm)	ACC-R-2424	36"x48" (915x1220 mm)	ACC-R-3648
24"x36" (610x915 mm)	ACC-R-2436	36"x60" (915x1524 mm)	ACC-R-3660
24"x48" (610x1220 mm)	ACC-R-2448	24"x30" (610x762 mm)	ACC-R-3024CRV

## PROFESSIONAL ASSOCIATIONS

Kinesik is proud to be a member of the following organisations



## STANDARD COLOURS

Custom colours available. Let us know how we can help.



Federal Yellow  
Code: YW



Brick Red  
Code: RD



Colonial Red  
Code: COL



Safety Red  
Code: SR



Dark Grey  
Code: DG



Onyx Black  
Code: BK

## TILE SPECIFICATIONS

Test	Description	Requirements
AASHTO HS20-44	Wheel Load Tests	4,722 kg
ASTM D 695	Compressive Strength	≥ 172 MPa
ASTM D 790	Flexural Strength	≥ 207 MPa
ASTM D 638	Tensile Strength	≥ 86 MPa
ASTM D 696	Coefficient of Thermal Expansion	2.32 x 10 <sup>-5</sup> /°C
ASTM C 1028	Static Coefficient of Friction	≥ 0.8 wet/dry
ASTM E 84	Flame Spread Index	≤ 25
ASTM D 570	Water Absorption	≤ 0.05%
ASTM C 501	Abrasive Wear Index Iw	> 500
ASTM G 155	Accelerated Weathering (2000 hrs)	ΔE < 5
ASTM C 1026	Freeze/thaw	No effect
ASTM B 117	Salt Spray (300 hrs)	No effect
ASTM D 1037	Accelerated Aging Cycle Testing	No effect
ASTM D 543	Chemical Resistance	No effect

Specifications are subject to change.

## APPLICATIONS

- |                                      |   |
|--------------------------------------|---|
| <p><b>TWSI – Truncated Domes</b></p> | <ul style="list-style-type: none"> <li>Accessible curb ramps align with the safe pedestrian crossing route across the vehicle roadway.</li> <li>An entry into a vehicular route or area where no curbs or other elements separate it from pedestrian route such as curb ramps, wheel chair ramps, top of stairs/escalators and blended transitions.</li> <li>An unprotected drop off edge, such as a transit platform where the change in elevation is greater than 250mm or the slope is steeper than in a ratio of 1:3 (33%).</li> <li>The unprotected edges of a reflecting pool.</li> </ul> |
| <p><b>TWSI – Wayfinding Bars</b></p> | <ul style="list-style-type: none"> <li>Located in large open floor areas, such as shopping malls or transportation terminals, to facilitate wayfinding by indicating the primary routes of travel.</li> <li>The indicated routes should lead from the entrance to major destinations, such as an information kiosk, registration desk, stairway, elevator, escalators, or to store or service doors.</li> </ul>   |

## Surface Applied



## The Most Innovative System

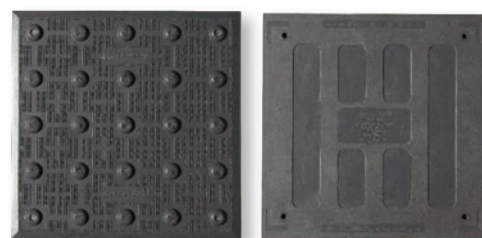
Introducing the **Ultimate Solution™** in Tactile Walking Surface Indicators (TWSI). Access® Tile Surface Applied has combined proven engineered polymers, processing and material technologies with innovative and intelligent design features to create the ultimate in tactile walking surface indicators. Maximized efficiencies in manufacturing, materials sourcing and product specifications deliver the most cost-effective solution in the industry. Access Tile® truncated dome and wayfinding bar tiles are the industry leader for durability, weather and wear resistance and are available as replaceable cast in place tiles and directional bars.

Tactile Walking Surface Indicators (TWSI) products for the following and many more applications:

- Curb Ramps
- Vehicular Passage Ways
- Parking Areas
- Top of Stair Landings – Wheelchair Ramps
- Pedestrian Crossings
- Escalator Approaches
- Transit Platforms
- Multi-Modal Transit Stations

### COMPLIANCE

Kinesik Engineered Products Incorporated is in full compliance with Canadian Accessibility Codes. The full product range of Kinesik tactile walking surface indicators meet the most recent AODA, CSA, ISO, provincial and national building codes. Kinesik Engineered Products Incorporated is your one stop source for all tactile systems for internal and external applications. Only Kinesik provides a complete range of products designed for safety, convenience and code compliance.



### PRODUCT FEATURES

- A cost effective method of retrofitting an existing curb ramp application
- A complete system is shipped with the tiles; adhesive & colour match fasteners
- Beveled edges make for a smooth transition that meets Canadian Accessibility Codes
- Light weight and easy to handle
- Easily cut to conform to various sizes and radius ramps
- Available as a standard radius tile
- Available in eight (8) different sizes to meet your needs
- Comes in six (6) standard colours with Federal colour identification numbers
- 5 year manufacturer's warranty

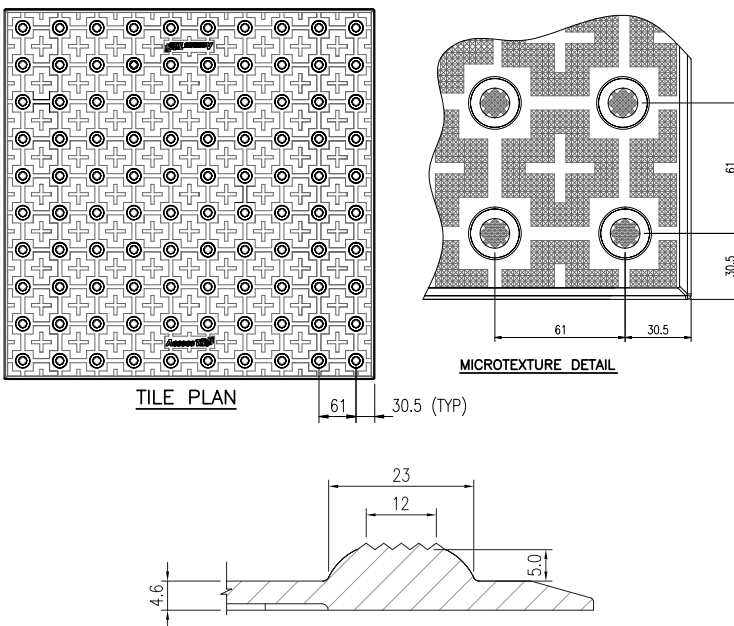
**ACCESS TILE  
RADIUS CALCULATOR**

Radius Calculator is found on the [Kinesik.ca](http://Kinesik.ca) Resources Page





**Tactile Walking Surface Indicator (TWSI) with Truncated Domes**



## STANDARD SURFACE APPLIED SIZES

SIZE	PRODUCT CODE	SIZE	PRODUCT CODE
12"x12" (305x305 mm)	ACC-S-1212	24"x60" (610x1524 mm)	ACC-S-2460
24"x24" (610x610 mm)	ACC-S-2424	36"x48" (915x1220 mm)	ACC-S-3648
24"x36" (610x915 mm)	ACC-S-2436	36"x60" (915x1524 mm)	ACC-S-3660
24"x48" (610x1220 mm)	ACC-S-2448	24"x30" (610x762 mm)	ACC-S-3024CRV

## PROFESSIONAL ASSOCIATIONS

Kinesik is proud to be a member of the following organisations



## STANDARD COLOURS

Custom colours available. Let us know how we can help.

Federal Yellow Code: YW	Brick Red Code: RD	Colonial Red Code: COL	Safety Red Code: SR	Dark Grey Code: DG	Onyx Black Code: BK

## TILE SPECIFICATIONS

Test	Description	Requirements
AASHTO HS20-44	Wheel Load Tests	4,722 kg
ASTM D 695	Compressive Strength	≥ 172 MPa
ASTM D 790	Flexural Strength	≥ 207 MPa
ASTM D 638	Tensile Strength	≥ 86 MPa
ASTM D 696	Coefficient of Thermal Expansion	2.32 x 10 <sup>-5</sup> /°C
ASTM C 1028	Static Coefficient of Friction	≥ 0.8 wet/dry
ASTM E 84	Flame Spread Index	≤ 25
ASTM D 570	Water Absorption	≤ 0.05%
ASTM C 501	Abrasive Wear Index Iw	> 500
ASTM G 155	Accelerated Weathering (2000 hrs)	ΔE < 5
ASTM C 1026	Freeze/thaw	No effect
ASTM B 117	Salt Spray (300 hrs)	No effect
ASTM D 1037	Accelerated Aging Cycle Testing	No effect
ASTM D 543	Chemical Resistance	No effect

Specifications are subject to change.

## APPLICATIONS

- |                                      |   |
|--------------------------------------|---|
| <p><b>TWSI – Truncated Domes</b></p> | <ul style="list-style-type: none"> <li>Accessible curb ramps align with the safe pedestrian crossing route across the vehicle roadway.</li> <li>An entry into a vehicular route or area where no curbs or other elements separate it from pedestrian route such as curb ramps, wheel chair ramps, top of stairs/escalators and blended transitions.</li> <li>An unprotected drop off edge, such as a transit platform where the change in elevation is greater than 250mm or the slope is steeper than in a ratio of 1:3 (33%).</li> <li>The unprotected edges of a reflecting pool.</li> </ul> |
| <p><b>TWSI – Wayfinding Bars</b></p> | <ul style="list-style-type: none"> <li>Located in large open floor areas, such as shopping malls or transportation terminals, to facilitate wayfinding by indicating the primary routes of travel.</li> <li>The indicated routes should lead from the entrance to major destinations, such as an information kiosk, registration desk, stairway, elevator, escalators, or to store or service doors.</li> </ul>   |

## Surface Applied Fire Retardant

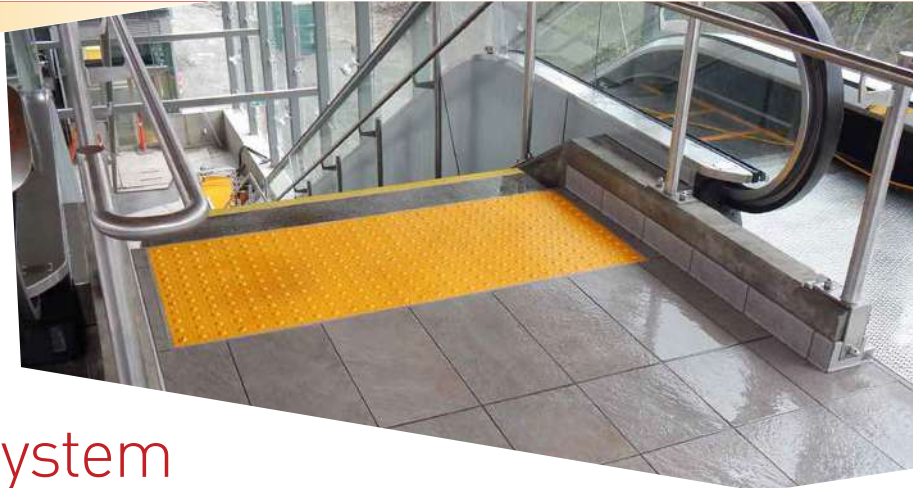
## The Most Innovative System

Kinesik Engineered Products is pleased to announce Access Tile<sup>®</sup> FR utilizing our new proprietary **FIRESENTRY-X™ Composite Technology**.

Access Tile<sup>®</sup> FR meets ULC-S102.2 fire standard at less than 25 flame and less than 50 smoke. This ULC certified fire rating for Access Tile<sup>®</sup> FR is the industry's first composite tile meeting the Ontario Building Code requirements. Access Tile<sup>®</sup> FR is the cost effective interior tactile solution for applying TWSI for tactile warning floor surfaces at exit stair wells, vestibules to exit stairs and lobbies, and corridors.

### COMPLIANCE

Access Tile<sup>®</sup> FR is in full compliance with Canadian Accessibility Codes and meets the requirements of the Ontario Building Code (OBC) 2012 Table 3.1.13.7. The full product range of Kinesik tactile walking surface indicators meet the most recent AODA, CSA, ISO, NFPA 130, as well as, provincial and national building codes. Kinesik Engineered Products is your one stop source for all tactile systems for interior and exterior applications. Only Kinesik provides a complete range of products designed for safety, code compliance and functionality.



### PRODUCT FEATURES

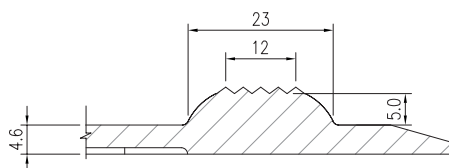
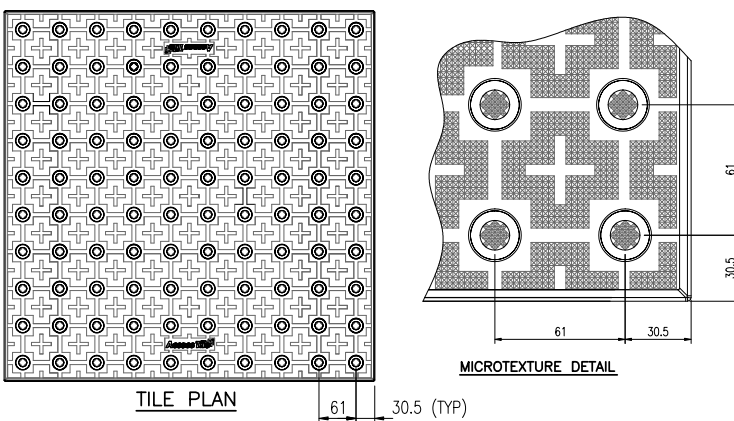
- A cost effective method of complying with TWSI requirements for interior tactile warning floor surfaces at exit stair wells, vestibules to exit stairs and lobbies, and corridors
- A complete system is shipped with the tiles; adhesive & fasteners
- Beveled edges make for a smooth transition that meets Canadian Accessibility Codes
- Easily cut to conform to various sizes and radius landings
- Available in three (3) different sizes
- Comes in three (3) standard colours with Federal colour identification numbers
- 5 year manufacturer's warranty

**ACCESS TILE  
RADIUS CALCULATOR**

Radius Calculator is found on the [Kinesik.ca](http://Kinesik.ca) Resources Page



**Tactile Walking Surface Indicator (TWSI) with Truncated Domes**



## PROFESSIONAL ASSOCIATIONS

Kinesik is proud to be a member of the following organisations



## STANDARD COLOURS



Federal Yellow  
Code: YW



Dark Grey  
Code: DG



Onyx Black  
Code: BK

## STANDARD SURFACE APPLIED FR SIZES

SIZE	PRODUCT CODE	SIZE	PRODUCT CODE
12"x12" (305x305 mm)	ACC-S-1212-FR	24"x48" (610x1220 mm)	ACC-S-2448-FR
24"x24" (610x610 mm)	ACC-S-2424-FR	24"x60" (915x1524 mm)	ACC-S-2460-FR
24"x36" (610x915 mm)	ACC-S-2436-FR		

## TILE SPECIFICATIONS

Test	Description	Requirements
ASTM D 790	Flexural Strength	≥ 156 MPa
ASTM D 638	Tensile Strength	≥ 66 MPa
ASTM C 1028	Static Coefficient of Friction	≥ 0.8 wet/dry
ULC S102.2	Flame Spread	≤ 10
ULC S102.2	Smoke Development	≤ 50
ASTM E648	Critical Radiant Flux	> 1.1 W/cm <sup>2</sup>
ASTM D 570	Water Absorption	≤ 0.05%
ASTM C 1026	Freeze/thaw	No effect
ASTM B 117	Salt Spray (300 hrs)	No effect
ASTM D 1037	Accelerated Aging Cycle Testing	No effect
ASTM D 543	Chemical Resistance	No effect

Specifications are subject to change.

## APPLICATIONS

### TWSI – Truncated Domes

- Specifically designed for interior use in high-rise building applications in compliance with Ontario Building Code.
- For tactile warning floor surface at exit stair wells, vestibules to exit stairs and lobbies, and corridors.



## Wayfinding Tiles

## Finding the Way The Most Innovative System



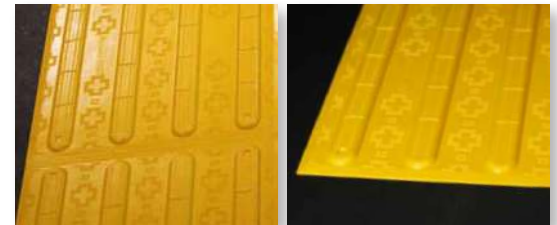
Introducing the **Ultimate Solution™** in Tactile Walking Surface Indicators (TWSI). Access® Tile Wayfinding tiles have combined proven engineered polymers, processing and material technologies with innovative and intelligent design features to create the ultimate in wayfinding tiles. Maximized efficiencies in manufacturing, materials sourcing and product specifications deliver the most cost-effective solution in the industry. Access® Tile Wayfinding bar tiles are the industry leader for durability, weather and wear resistance and are available as replaceable cast in place tiles and surface applied tiles.

Wayfinding tiles products for the following and many more applications:

- Leading to Doorways or Transit Stops
- Sidewalks/Outdoor Walkways
- Top of Stair Landings
- Escalator Approaches
- Transit Platforms
- Multi-Modal Transit Stations
- Elevator Call Buttons

### COMPLIANCE

Kinesik Engineered Products Incorporated is in full compliance with Canadian Accessibility Codes. The full product range of Kinesik tactile walking surface indicators meet the most recent AODA, CSA, ISO, provincial and national building codes. Kinesik Engineered Products Incorporated is your one stop source for all tactile systems for internal and external applications. Only Kinesik provides a complete range of products designed for safety, convenience and code compliance.

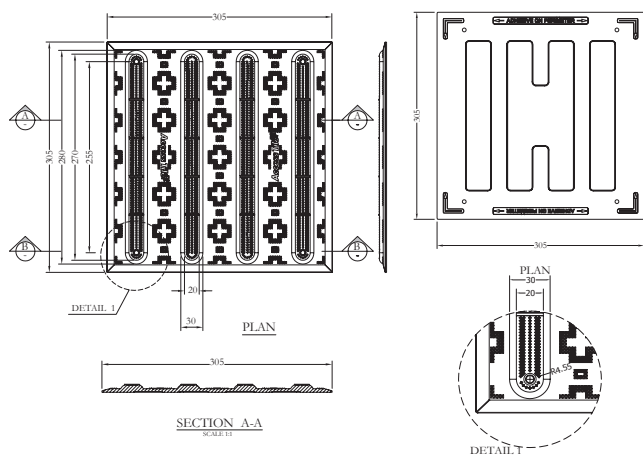


### PRODUCT FEATURES

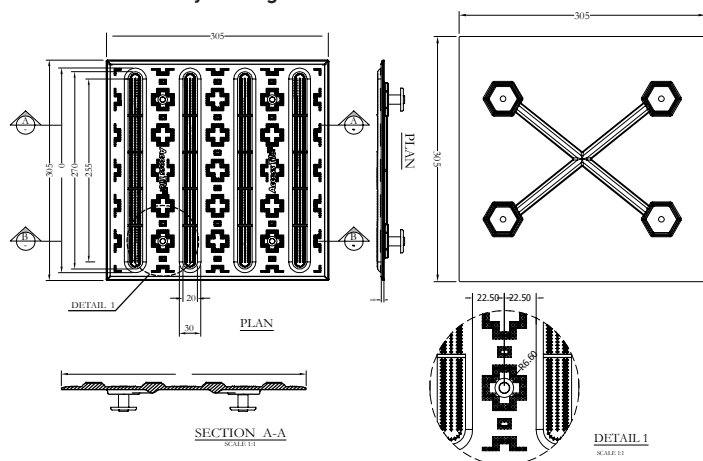
- A cost effective method of retrofitting existing sidewalks
- Cast in place replaceable and surface applied options
- A complete system is shipped with the tiles; adhesive & colour match fasteners/anchors
- Light weight and easy to handle
- Easily cut to conform to various sizes and radius ramps
- Comes in six (6) standard colours with Federal colour identification numbers
- 5 year manufacturer's warranty



**Tactile Walking Surface Indicator (TWSI) with Wayfinding Bars - Surface Applied Tiles**



**Tactile Walking Surface Indicator (TWSI) with Wayfinding Bars - Cast In Place Tiles**



## STANDARD WAYFINDING SIZES

SURFACE APPLIED SIZE	PRODUCT CODE	CAST IN PLACE SIZE	PRODUCT CODE
12"x12" (305x305 mm)	ACC-SB-1212	12"x12" (305x305 mm)	ACC-RB-1212

## PROFESSIONAL ASSOCIATIONS

Kinesik is proud to be a member of the following organisations



## STANDARD COLOURS

Federal Yellow Code: YW	Brick Red Code: RD	Colonial Red Code: COL	Safety Red Code: SR	Dark Grey Code: DG	Onyx Black Code: BK

Custom colours available. Let us know how we can help.

## TILE SPECIFICATIONS

Test	Description	Requirements
AASHTO HS20-44	Wheel Load Tests	4,722 kg
ASTM D 695	Compressive Strength	≥ 172 MPa
ASTM D 790	Flexural Strength	≥ 207 MPa
ASTM D 638	Tensile Strength	≥ 86 MPa
ASTM D 696	Coefficient of Thermal Expansion	2.32 x 10 <sup>-5</sup> /°C
ASTM C 1028	Static Coefficient of Friction	≥ 0.8 wet/dry
ASTM E 84	Flame Spread Index	≤ 25
ASTM D 570	Water Absorption	≤ 0.05%
ASTM C 501	Abrasive Wear Index lw	> 500
ASTM G 155	Accelerated Weathering (2000 hrs)	ΔE < 5
ASTM C 1026	Freeze/thaw	No effect
ASTM B 117	Salt Spray (300 hrs)	No effect
ASTM D 1037	Accelerated Aging Cycle Testing	No effect
ASTM D 543	Chemical Resistance	No effect

Specifications are subject to change.

## APPLICATIONS

### TWSI – Wayfinding Bars

- Located in large open floor areas, such as shopping malls or transportation terminals, to facilitate wayfinding by indicating the primary routes of travel.
- The indicated routes should lead from the entrance to major destinations, such as an information kiosk, registration desk, stairway, elevator, escalators, or to store or service doors.

## Designed for Durability

## Engineered for Ultimate Strength™

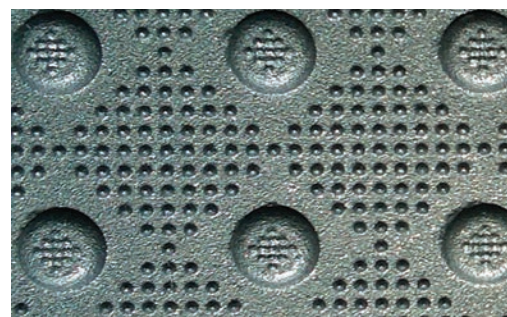
Advantage® Cast Iron Tactile Walking Surface Indicator (TWSI) plates are manufactured in strict accordance with ASTM A-48, Class 35B Grey Cast Iron. The Advantage® Cast in Place System is lightweight with exceptional high strength, and utilizes the most advanced metallurgical Engineering Science and Technology to meet and exceed the most stringent municipal standards. Advantage® Cast Iron is aesthetically pleasing, has exceptional longevity and incorporates integral texture for a permanent slip resistant surface.

Tactile Walking Surface Indicators (TWSI) products for the following and many more applications:

- Curb Ramps
- Pedestrian Crossings
- Transit Platforms
- Vehicular Passage Ways
- Parking Areas
- Top of Stair Landings

### COMPLIANCE

Kinesik Engineered Products Incorporated is in full compliance with Canadian Accessibility Codes. The full product range of Kinesik tactile walking surface indicators meet the most recent AODA, CSA, ISO, provincial and national building codes. Kinesik Engineered Products Incorporated is your one stop source for all tactile systems for internal and external applications. Only Kinesik provides a complete range of products designed for safety, convenience and code compliance.



### PRODUCT FEATURES

- Lightweight and easy to install
- Bolted connection allows for easy connectability between two or more plates
- Available in various sizes and radii
- Engineered to endure the toughest conditions such as snow plows, overweight vehicular loads and heavy pedestrian traffic
- Maintenance-free natural patina
- ASTM A48, Class 35B Grey Cast Iron
- Can be recycled after its lifecycle
- Largest selection of standard and radii sizes
- 10 year manufacturer's warranty

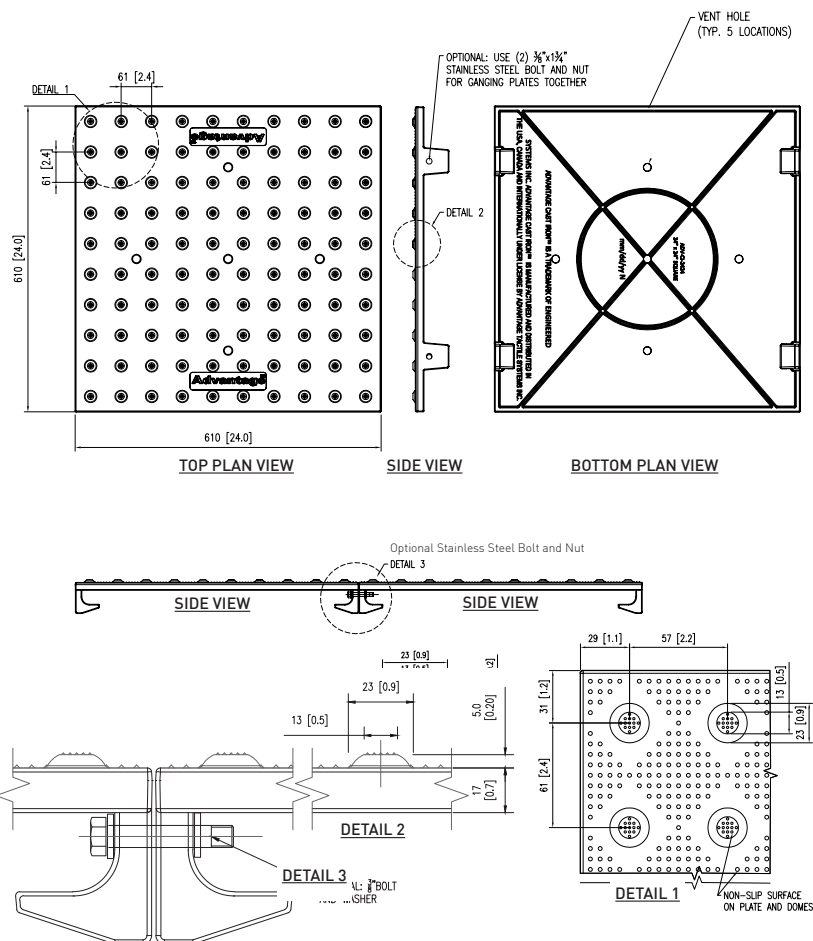
**ADVANTAGE CAST IRON  
RADIUS CALCULATOR**

Radius Calculator is found on the [Kinesik.ca](http://Kinesik.ca) Resources Page





**Tactile Walking Surface Indicator (TWSI) with Truncated Domes**



## PROFESSIONAL ASSOCIATIONS

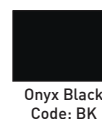
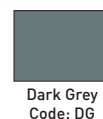
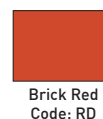
Kinesik is proud to be a member of the following organisations



## STANDARD COLOUR



## OPTIONAL COLOURS



## ADVANTAGE CAST IRON SIZES

STANDARD SIZE	PRODUCT CODE	RADIAL SIZE	PRODUCT CODE
18"x24" (457x610mm)	ADV-CI-1824	10' (3,048mm)	ADV-CI-24-10R
24"x24" (610x610mm)	ADV-CI-2424	15' (4,572mm)	ADV-CI-24-15R
30"x24" (762x610mm)	ADV-CI-3024	17'5" (5,334mm)	ADV-CI-24-17.5R
		20' (6,096mm)	ADV-CI-24-20R
		25' (7,620mm)	ADV-CI-24-25R
		30' (9,144mm)	ADV-CI-24-30R
		35' (10,668mm)	ADV-CI-24-35R

## PLATE SPECIFICATIONS

Standard Specification for Grey Iron Castings, Class 35B

ASTM Reference	Test Description	Value
ASTM C 1028	Static Coefficient of Friction	≥ 1.1 wet/dry
ASTM A 327	Impact Resistance	No damage @ 54 J
ASTM A 48	Compressive Strength	785 MPa
ASTM E8/E8M-13a	Tensile Strength	≥ 241 MPa
ASTM C 501	Abrasive Wear Index	> 55

Specifications are subject to change.

## APPLICATIONS

## TWSI – Truncated Domes

- Accessible curb ramps align with the safe pedestrian crossing route across the vehicle roadway.
- An entry into a vehicular route or area where no curbs or other elements separate it from pedestrian route such as curb ramps, wheel chair ramps, top of stairs/escalators and blended transitions.
- An unprotected drop off edge, such as a transit platform where the change in elevation is greater than 250 mm or the slope is steeper than in a ratio of 1:3 (33%).
- The unprotected edges of a reflecting pool.

## Designed for Durability

## Engineered for Ultimate Strength™

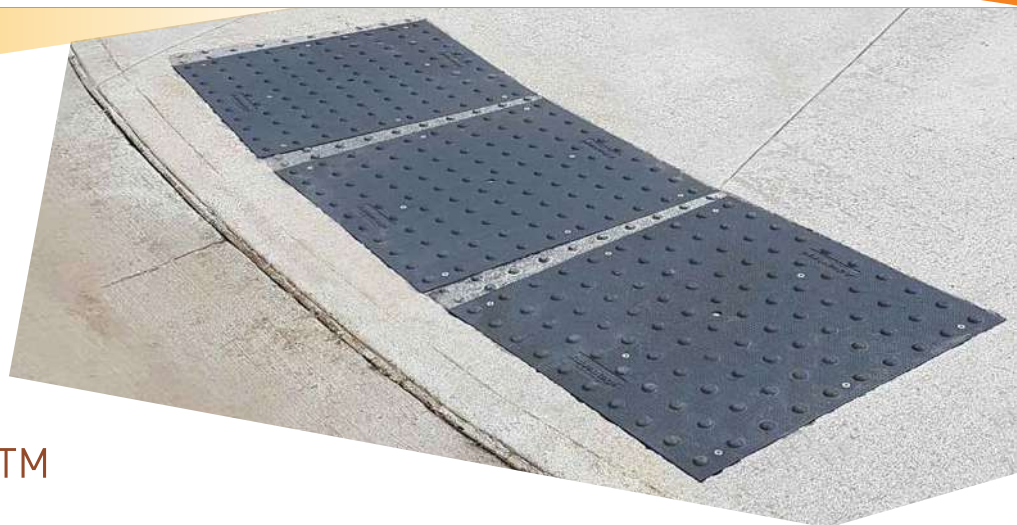
Advantage® Cast Iron **Premier** Tactile Walking Surface Indicator (TWSI) plates are manufactured in strict accordance with ASTM A-48, Class 35B Grey Cast Iron. The Advantage® Cast In Place **Premier** System is lightweight with exceptional high strength, and utilizes the most advanced metallurgical Engineering Science and Technology to exceed the most stringent accessibility standards. This new self-threading corrosion-resistant anchor system allows the installer to position the anchors with ease and full control. Advantage® Cast Iron **Premier** is aesthetically pleasing, has exceptional longevity and incorporates integral texture for a permanent slip resistant surface.

Tactile Walking Surface Indicators (TWSI) products for the following and many more applications:

- Curb Ramps
- Pedestrian Crossings
- Transit Platforms
- Vehicular Passage Ways
- Parking Areas
- Top of Stair Landings

### COMPLIANCE

Kinesik Engineered Products Incorporated is in full compliance with Canadian Accessibility Codes. The full product range of Kinesik tactile walking surface indicators meet the most recent AODA, CSA, ISO, provincial and national building codes. Kinesik Engineered Products Incorporated is your one stop source for all tactile systems for internal and external applications. Only Kinesik provides a complete range of products designed for safety, convenience and code compliance.



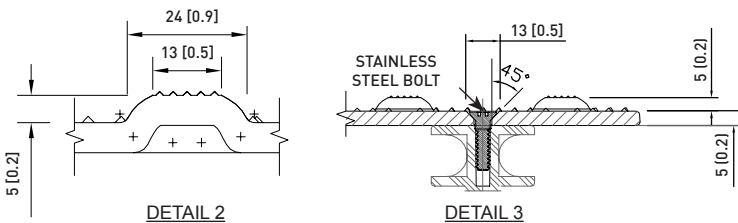
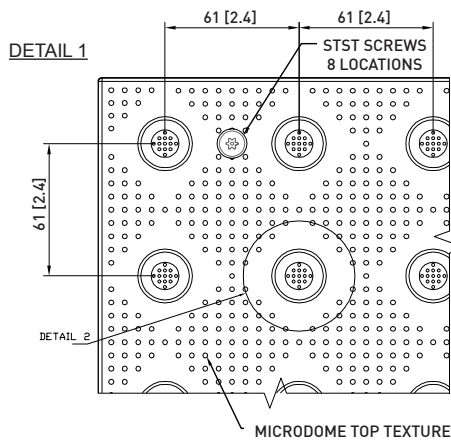
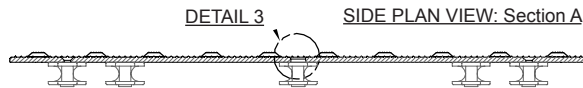
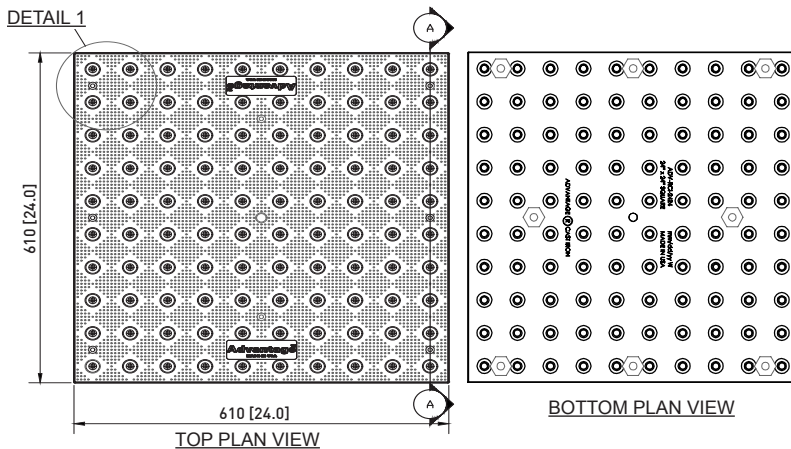
### PRODUCT FEATURES

- Lightweight and easy to install
- Self-threading corrosion-resistant composite nylon anchors
- Available in various sizes and radii
- Engineered to endure the toughest conditions such as snow plows, overweight vehicular loads and heavy pedestrian traffic
- Maintenance-free natural patina
- ASTM A48, Class 35B Grey Cast Iron
- Can be recycled after its lifecycle
- 10 year manufacturer's warranty

### ADVANTAGE PREMIER CAST IRON RADIUS CALCULATOR

Radius Calculator is found on the [Kinesik.ca](http://Kinesik.ca) Resources Page

## Tactile Walking Surface Indicator (TWSI) with Truncated Domes

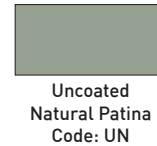


## PROFESSIONAL ASSOCIATIONS

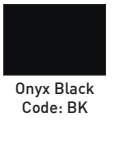
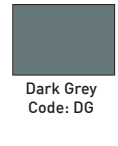
Kinesik is proud to be a member of the following organisations



## STANDARD COLOUR



## OPTIONAL COLOURS



## ADVANTAGE CAST IRON PREMIER SIZES

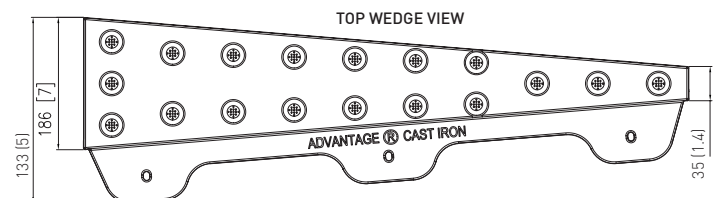
STANDARD SIZE	PRODUCT CODE	RADIAL SIZE	PRODUCT CODE
12"x24" (305x610mm)	ADV-RCI-1224	15' (4,572mm)	ADV-RCI-15RW
18"x24" (457x610mm)	ADV-RCI-1824	20' (6,096mm)	ADV-RCI-20RW
24"x24" (610x610mm)	ADV-RCI-2424	25' (7,620mm)	ADV-RCI-25RW
30"x24" (762x610mm)	ADV-RCI-3024	30' (9,144mm)	ADV-RCI-30RW

## PLATE SPECIFICATIONS

Standard Specification for Grey Iron Castings, Class 35B

ASTM Reference	Test Description	Value
ASTM C 1028	Static Coefficient of Friction	≥ 1.1 wet/dry
ASTM A 327	Impact Resistance	No damage @ 54 J
ASTM A 48	Gray Iron Castings	Class 35B
ASTM C 501	Abrasive Wear Index	> 55

Specifications are subject to change.





## Elegance meets Functionality

Advantage® ONE Tactile Walking Surface Indicators (TWSI) have been designed for all interior accessibility solutions. Advantage® ONE Tactile indicators are machined from a solid piece of 316L Marine Grade Stainless Steel, and proves to be an aesthetically pleasing, strong, and durable material.

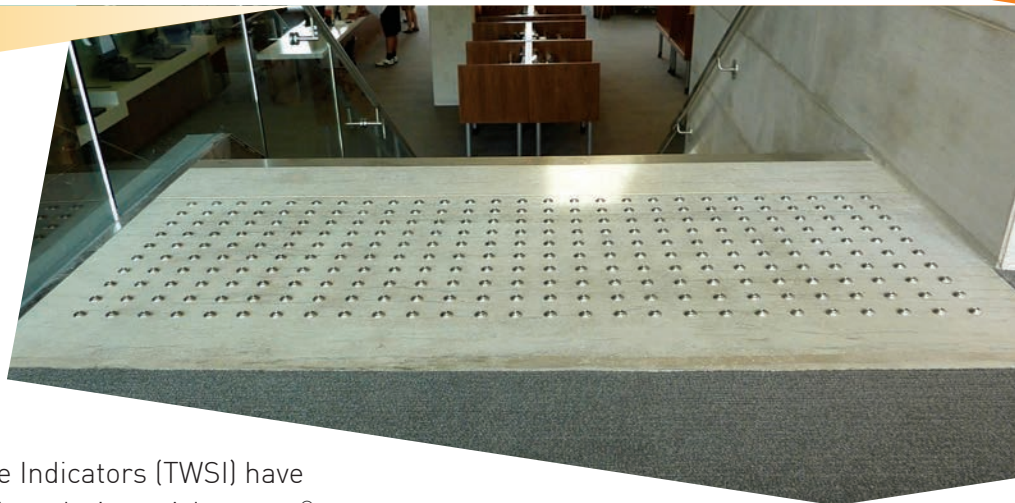
Advantage® ONE incorporates an integral texture in the stainless steel for permanent slip resistance. Our products have undergone a rigorous series of tests to ensure that they meet and exceed guidelines developed by the AODA, CSA, ISO, and provincial and national building codes. Advantage® ONE TWSI products offer the lowest lifecycle cost, and eliminates long term safety concerns and accessibility limitations.

Tactile Walking Surface Indicators (TWSI) products for the following and many more applications:

- Revolving Door Approaches
- Wheelchair Ramps
- Parking Areas
- Top of Stair Landings
- Turnstile and Gate Access
- Escalator Approaches
- Transit Platforms
- Multi-Modal Transit Stations- Stair Landings

### COMPLIANCE

Kinesik Engineered Products Incorporated is in full compliance with Canadian Accessibility Codes. The full product range of Kinesik tactile walking surface indicators meet the most recent AODA, CSA, ISO, provincial and national building codes. Kinesik Engineered Products Incorporated is your one stop source for all tactile systems for internal and external applications. Only Kinesik provides a complete range of products designed for safety, convenience and code compliance.



### PRODUCT FEATURES

- 316L, Marine grade stainless steel
- Innovative adhesive capture design
- Optimum anti-slip design
- Resistant to heavy traffic abuse and maintenance machinery
- 5 year manufacturer's warranty

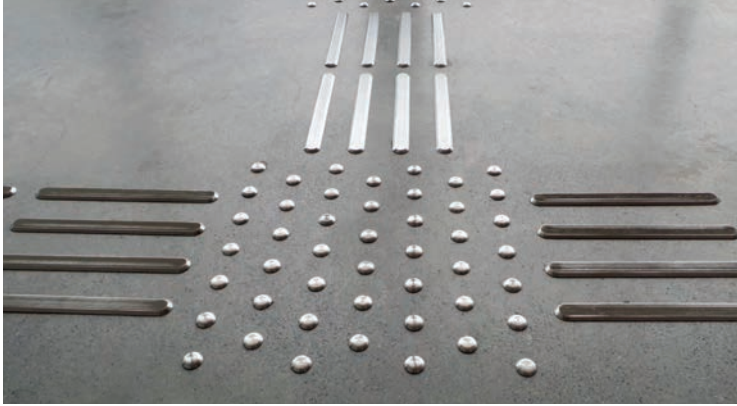
Domes and Bars come in the following styles:

#### DOMES

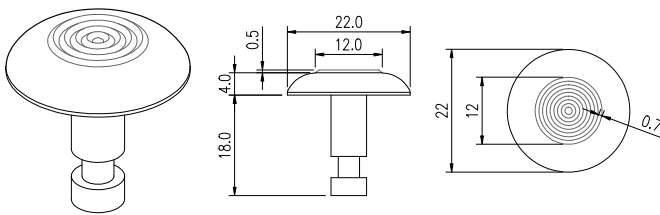
- Concentric Rings Pattern
- Crosshatch Pattern
- Carborundum - Non-Slip

#### BARS

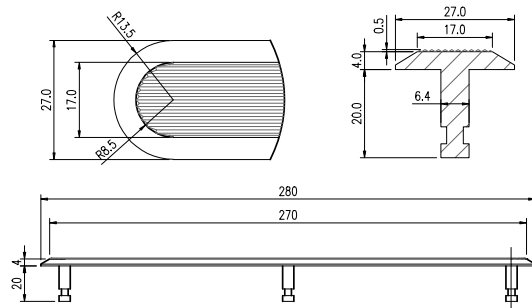
- Crosshatch Pattern
- Carborundum - Non-Slip
- Linear Grooves



**Tactile Walking Surface Indicator (TWSI) Domes**



**Tactile Walking Surface Indicator (TWSI) Wayfinding Bars**



## PROFESSIONAL ASSOCIATIONS

Kinesik is proud to be a member of the following organisations



## SPECIFICATIONS

Advantage® ONE (TWSI) meets the following ASTM specifications: A182, A193, A276, A313, A314, A320, A479, A493 and A580.

Test	Description	Requirements
ASTM C 1028-96	Static Coefficient of Friction	≥ 0.8 wet/dry
ASTM D 543-95	Chemical Resistance	No effect
ASTM D 2486-00	Abrasive Wear Gardener Tester	No wear
ASTM C 501-84	Abrasive Wear Taber Tester	No wear
AASHTO HB-17	Wheel Load Tests	No effect
ASTM B 117-03	Salt Spray (300 hrs)	No effect

Specifications are subject to change.

## APPLICATIONS

- |   |   |
|---|---|
| <p>Tactile Attention Indicator<br/><b>Truncated Domes</b></p> | <ul style="list-style-type: none"> <li>An unprotected drop off edge, such as a transit platform where the change in elevation is greater than 250mm or the slope is steeper than in a ratio of 1:3 (33%).</li> <li>The unprotected edges of a reflecting pool.</li> </ul>   |
| <p>Tactile Direction Indicator<br/><b>Wayfinding Bars</b></p> | <ul style="list-style-type: none"> <li>Located in large open floor in large open floor areas, such as shopping malls or transportation terminals, to facilitate wayfinding by indicating the primary routes of travel.</li> <li>The indicated routes should lead from the entrance to major destinations, such as an information kiosk, registration desk, stairway, elevator, escalators, or to store or service doors.</li> </ul> |

## ADVANTAGE ONE - INDIVIDUAL DOMES

DOMES DIA.	PRODUCT CODE	CENTRE DOME PATTERN	MATERIAL
23	ADV-D-1381-N	Concentric Rings	Stainless Steel
22	ADV-D-1281-N	Concentric Rings	Stainless Steel
23	ADV-D-2281-N	Cross Hatch	Stainless Steel
22	ADV-D-5281-N	Black Carborundum	Stainless Steel
22	ADV-D-1285-YW	Concentric Rings	SS Powder Coated Yellow
22	ADV-D-1281-PVD	Concentric Rings	SS PVD Coated
22	ADV-D-1282-CL	Concentric Rings	Aluminum - Clear
22	ADV-D-1282-BK	Concentric Rings	Aluminum - Black
22	ADV-D-1282-RD	Concentric Rings	Aluminum - Red
22	ADV-D-1283-N	Concentric Rings	Brass

## ADVANTAGE ONE - INDIVIDUAL BARS

BAR SIZE	PRODUCT CODE	CENTRE BAR PATTERN	MATERIAL
11"x1" (280x20mm)	ADV-B-2281-N	Concentric Rings	Stainless Steel
11"x1" (280x20mm)	ADV-B-3281-N	Cross Hatch	Stainless Steel
11"x1" (280x20mm)	ADV-B-5281-N	Black Carborundum	Stainless Steel

## Designed for Accessibility

## Engineered for Life

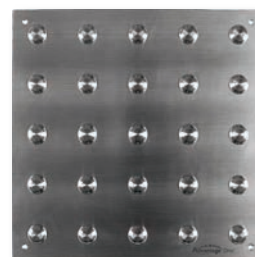
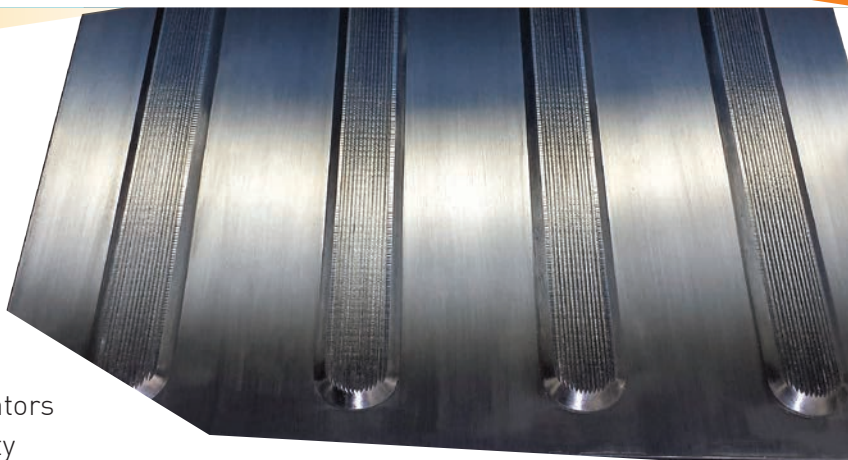
Advantage® ONE Plate Tactile Walking Surface Indicators (TWSI) have been designed for all interior accessibility solutions. Advantage® ONE Plate indicators are machined from a solid piece of 316L Marine Grade Stainless Steel and fastened to a solid Stainless Steel Plate. This process enhances the aesthetics of the tile, but also have been proven to be strong and durable. Advantage® ONE Plate incorporates an integral texture in the stainless steel for permanent slip resistance. Our products have undergone a rigorous series of tests to ensure that they meet and exceed guidelines developed by the AODA, CSA, ISO, and provincial and national building codes. Advantage® ONE Plate TWSI products offer the lowest lifecycle cost, and eliminates long term safety concerns and accessibility limitations.

Tactile Walking Surface Indicators (TWSI) products for the following and many more applications:

- Revolving Door Approaches
- Wheelchair Ramps
- Parking Areas
- Top of Stair Landings
- Turnstile and Gate Access
- Escalator Approaches
- Transit Platforms
- Multi-Modal Transit Stations
- Top of Stair Landings

### COMPLIANCE

Kinesik Engineered Products Incorporated is in full compliance with Canadian Accessibility Codes. The full product range of Kinesik tactile walking surface indicators meet the most recent AODA, CSA, ISO, provincial and national building codes. Kinesik Engineered Products Incorporated is your one stop source for all tactile systems for internal and external applications. Only Kinesik provides a complete range of products designed for safety, convenience and code compliance.



### PRODUCT FEATURES

- 316L, Marine grade stainless steel
- Innovative adhesive capture design
- Optimum anti-slip design
- Resistant to heavy traffic abuse and maintenance machinery
- 5 year manufacturer's warranty

Domes and Bars come in the following styles:

#### PLATE DOMES

- Concentric Rings Pattern
- Crosshatch Pattern
- Carborundum - Non-Slip

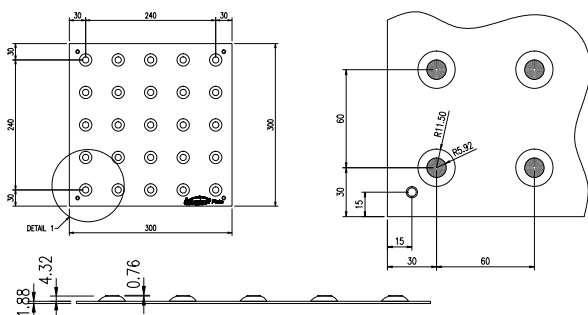
#### PLATE BARS

- Crosshatch Pattern
- Carborundum - Non-Slip
- Linear Grooves

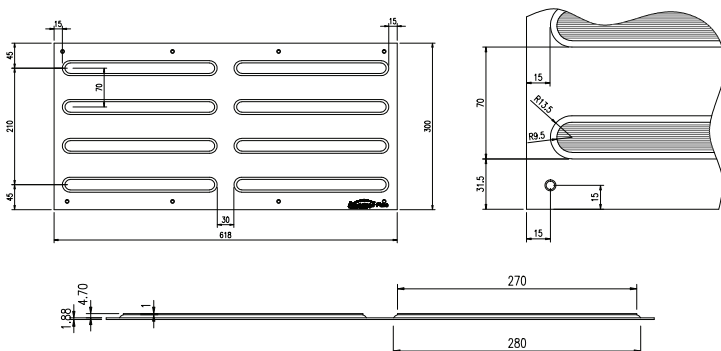




**Tactile Walking Surface Indicator (TWSI) with Truncated Domes**



**Tactile Walking Surface Indicator (TWSI) with Wayfinding Plates**



## PROFESSIONAL ASSOCIATIONS

Kinesik is proud to be a member of the following organisations



## PLATE SPECIFICATIONS

Advantage® ONE [TWSI] meets the following ASTM specifications: A182, A193, A276, A313, A314, A320, A479, A493 and A580.

Test	Description	Requirements
ASTM C 1028-96	Static Coefficient of Friction	≥ 0.8 wet/dry
ASTM D 543-95	Chemical Resistance	No effect
ASTM D 2486-00	Abrasive Wear Gardener Tester	No wear
ASTM C 501-84	Abrasive Wear Taber Tester	No wear
AASHTO HB-17	Wheel Load Tests	No effect
ASTM B 117-03	Salt Spray (300 hrs)	No effect

Specifications are subject to change.

## APPLICATIONS

Tactile Attention Indicator <b>Truncated Domes</b>	<ul style="list-style-type: none"> <li>An unprotected drop off edge, such as a transit platform where the change in elevation is greater than 250mm or the slope is steeper than in a ratio of 1:3 (33%).</li> <li>The unprotected edges of a reflecting pool.</li> </ul>
Tactile Direction Indicator <b>Wayfinding Bars</b>	<ul style="list-style-type: none"> <li>Located in large open floor in large open floor areas, such as shopping malls or transportation terminals, to facilitate wayfinding by indicating the primary routes of travel.</li> <li>The indicated routes should lead from the entrance to major destinations, such as an information kiosk, registration desk, stairway, elevator, escalators, or to store or service doors.</li> </ul>

## ADVANTAGE ONE DOME PLATE SIZES

DOME PLATE SIZE	PRODUCT CODE	CENTRE DOME PATTERN
12"x12" (305x305mm)	ADV-PD-11421-N	Concentric Rings
12"x24" (305x610mm)		
12"x12" (305x305mm)	ADV-PD-21421-N	Cross Hatch
12"x24" (305x610mm)		
12"x12" (305x305mm)	ADV-PD-51421-N	Black Carborundum
12"x24" (305x610mm)		

## ADVANTAGE ONE WAYFINDING PLATE SIZES

WAYFINDING PLATE SIZE	PRODUCT CODE	CENTRE BAR PATTERN
12"x12" (305x305mm)	ADV-PB-21431-N	Cross Hatch
12"x24" (305x610mm)		
12"x12" (305x305mm)	ADV-PB-31431-N	Linear Grooves
12"x24" (305x610mm)		
12"x12" (305x305mm)	ADV-PB-51431-N	Black Carborundum
12"x24" (305x610mm)		



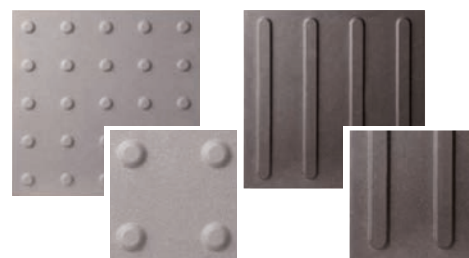
**Designed for style**

## Engineered for Performance

Elan<sup>®</sup> Tile is the ultimate porcelain tactile indicator chosen by professionals who design and construct the finest commercial, institutional and public environments. Incorporating the best raw materials in the market, Elan<sup>®</sup> Tile far exceeds the EN 14411 standard, allowing the product to meet the designation of "Porcelain Stoneware" and to be suitable for both interior and exterior applications. Offering highly durable and versatile tactile walking surface indicators (truncated domes) for warning, and direction indicators for wayfinding, the Elan<sup>®</sup> Tile line of products signals the newest generation of excellence from Kinesik.

### COMPLIANCE

Kinesik Engineered Products Incorporated is in full compliance with Canadian Accessibility Codes. The full product range of Kinesik tactile walking surface indicators meet the most recent AODA, CSA, ISO, provincial and national building codes. Kinesik Engineered Products Incorporated is your one stop source for all tactile systems for internal and external applications. Only Kinesik provides a complete range of products designed for safety, convenience and code compliance.

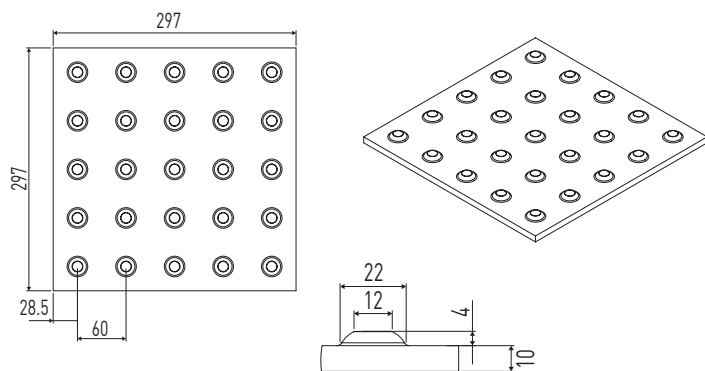


### PRODUCT FEATURES

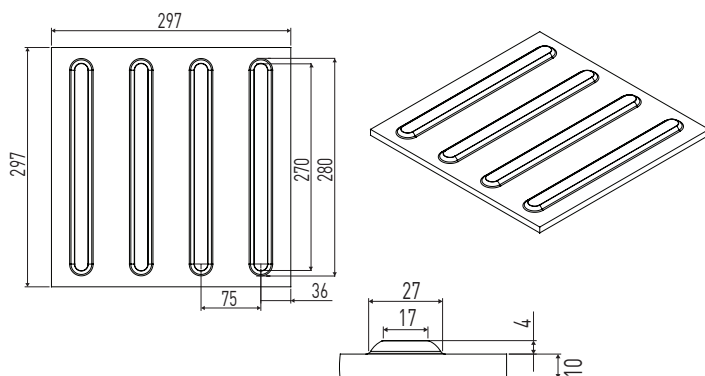
- Certified porcelain stoneware for maximum durability and surface hardness
- Full body porcelain that gives a highly compact surface with extremely low absorbency characteristics
- Not affected by stains, water or chemicals
- Exceptional resistance to thermal shock, deep abrasions and frost
- R11 finish meets most demanding slip resistance requirements for construction projects in high traffic areas
- Versatile and easy installation for interior and exterior environments
- Field tile available in different sizes
- 5 year manufacturer's warranty



**Tactile Walking Surface Indicator (TWSI) with Truncated Domes**



**Tactile Walking Surface Indicator (TWSI) with Wayfinding Tiles**



#### ELAN TILE SIZES

DOME TILE SIZE	PRODUCT CODE	WAYFINDING TILE SIZE	PRODUCT CODE
12"x12" (300x300mm)	ELAN-D-1212	12"x12" (300x300mm)	ELAN-B-1212

#### PROFESSIONAL ASSOCIATIONS

Kinesik is proud to be a member of the following organisations



#### STANDARD COLOURS

Sand Stone - Code: ST	Cultured Grey - Code: CG	Vogue Black - Code: BK

#### TILE SPECIFICATIONS

EN 14411 Requirements	Standards	Standard Specifications	Elan <sup>®</sup> Tile
Length and Width	ISO 10545-2	± 0.6%	± 0.1%
Thickness	ISO 10545-2	± 5%	± 3%
Straightness	ISO 10545-2	± 0.5%	± 0.2%
Rectangularity	ISO 10545-2	± 0.6%	± 0.2%
Surface Flatness	ISO 10545-2	± 0.5%	± 0.2%
Water Absorption	ISO 10545-3	≤ 0.5%	≤ 0.04%
Rupture Modules	ISO 10545-4	≥ 35N. mm <sup>2</sup>	≥ 40N. mm <sup>2</sup>
Impact Resistance	ISO 10545-5	Ordered	Resistant
Abrasion Resistance	ISO 10545-6	≤ 175 mm <sup>3</sup>	≤ 130 mm <sup>3</sup>
Linear Thermal Expansion	ISO 10545-8	Ordered	≤ 8 x 10 <sup>-6</sup> /°C
Thermal Shock Resistance	ISO 10545-9	Ordered	Resistant
Fracture Resistance	ISO 10545-11	Ordered	Resistant
Frost Resistance	ISO 10545-12	Ordered	Resistant
Chemical Resistance	ISO 10545-13	Ordered	Resistant
Stain Resistance	ISO 10545-14	MIN Class 1	Class 5
Slip Resistance	DIN 51130	MIN R9	R11 >19° - 27°
TTMAC DCOF	ANSI A137.1	≥ 0.42	≥ 0.70 Wet/Dry
Surface Hardness (Mohs Scale)	EN 101	MIN 1	≥ 9
Cadmium and Lead Release	ISO 10545-15	Ordered	Resistant

Specifications are subject to change.

#### APPLICATIONS

Tactile Attention Indicator <b>Truncated Domes</b>	<ul style="list-style-type: none"> <li>An unprotected drop off edge, such as a transit platform where the change in elevation is greater than 250mm or the slope is steeper than in a ratio of 1:3 (33%).</li> <li>The unprotected edges of a reflecting pool.</li> <li>An entry into a vehicular route or area where no curbs or other elements separate it from a pedestrian route such as curb ramps, wheel chair ramps, top of stairs/escalators and blended transitions.</li> </ul>
Tactile Direction Indicator <b>Wayfinding Bars</b>	<ul style="list-style-type: none"> <li>Located in large open floor in large open floor areas, such as shopping malls or transportation terminals, to facilitate wayfinding by indicating the primary routes of travel.</li> <li>The indicated routes should lead from the entrance to major destinations, such as an information kiosk, registration desk, stairway, elevator, escalators, or to store or service doors.</li> </ul>





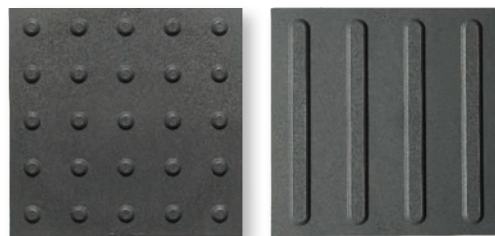
## Designed for flexibility Engineered to Last

Eon<sup>®</sup> Tile is a durable and flexible tactile indicator chosen first by professionals who design and construct the finest commercial, institutional and public environments.

Eon<sup>®</sup> Tile is state of the art polymers compounded together to create category leading quality and a contemporary look and finish. Suitable for a variety of applications such as airport concourses, railway stations, shopping centres, department stores, supermarkets, hospitals, swimming pools, schools, banks, community centres or most any high traffic environment. Eon<sup>®</sup> Tile's line of products offer attention indicators (truncated domes) for warning and tactile direction indicators for way finding. Eon<sup>®</sup> Tile is part of the newest generation of excellence in warning surfaces from Kinesik Engineered Products Incorporated.

### COMPLIANCE

Kinesik Engineered Products Incorporated is in full compliance with Canadian Accessibility Codes. The full product range of Kinesik tactile walking surface indicators meet the most recent AODA, CSA, ISO, provincial and national building codes. Kinesik Engineered Products Incorporated is your one stop source for all tactile systems for internal and external applications. Only Kinesik provides a complete range of products designed for safety, convenience and code compliance.



### PRODUCT FEATURES

- Made from premium long lasting polymers
- Flexible tiles will form to curved surfaces
- Flexible tiles become stable once bound to most surfaces
- Easily worked and shaped
- Appropriate for both initial installation, and surface retrofit
- UV resistant for colour stability and ensures optimal visual surface contrast
- Conforms to contrast requirements (based on adjacent surfaces)
- 5 year manufacturer's warranty



#### PROFESSIONAL ASSOCIATIONS

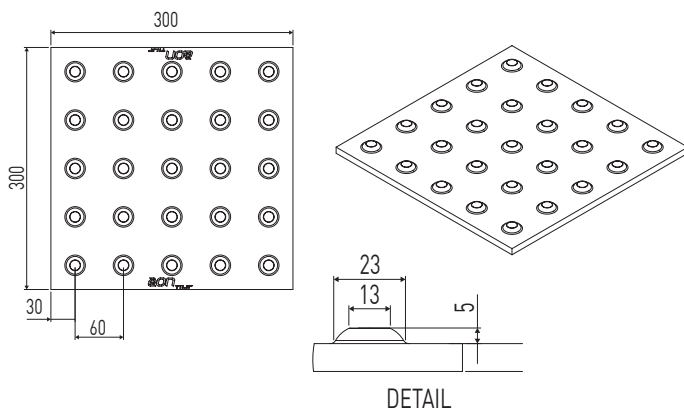
Kinesik is proud to be a member of the following organisations



#### STANDARD COLOURS

Ivory Code: WH	HiVis Yellow Code: YW	Smoke Grey Code: SG	Vogue Black Code: BK

#### Tactile Walking Surface Indicator (TWSI) with Truncated Domes

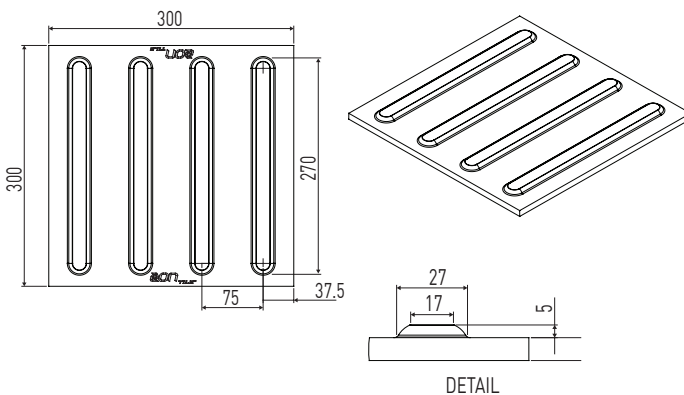


#### TILE SPECIFICATIONS

Test	Description	Requirements
Antimicrobial Test	ASTM E2180	Pass
Fungi Test	ASTM G21	Pass
Tensile Strength	ASTM D412	0.17 MPa
Tensile Elongation	ASTM D412	700%
Tensile Stress	ASTM D412	6.9 MPa
Hardness (Shore A)	ASTM 2240	> 85
Shrinkage	ASTM D955	0.9-1.5%
Melt Temperature		190 - 210°C
Moisture Content		0.05%

Specifications are subject to change.

#### Tactile Walking Surface Indicator (TWSI) with Wayfinding Tiles



#### APPLICATIONS

<p>Tactile Attention Indicator</p> <p><b>Truncated Domes</b></p>	<ul style="list-style-type: none"> <li>An unprotected drop off edge, such as a transit platform where the change in elevation is greater than 250mm or the slope is steeper than in a ratio of 1:3 (33%).</li> <li>The unprotected edges of a reflecting pool.</li> <li>An entry into a vehicular route or area where no curbs or other elements separate it from a pedestrian route such as curb ramps, wheel chair ramps, top of stairs/escalators and blended transitions.</li> </ul>
<p>Tactile Direction Indicator</p> <p><b>Wayfinding Bars</b></p>	<ul style="list-style-type: none"> <li>Located in large open floor areas, such as shopping malls or transportation terminals, to facilitate wayfinding by indicating the primary routes of travel.</li> <li>The indicated routes should lead from the entrance to major destinations, such as an information kiosk, registration desk, stairway, elevator, escalators, or to store or service doors.</li> </ul>

#### EON TILE SIZES: AVAILABLE IN 3MM AND 5MM THICKNESSES

DOMES TILE SIZE	PRODUCT CODE	WAYFINDING TILE SIZE	PRODUCT CODE
12"x12" (300x300x3mm)	<b>EON-D-1212</b>	12"x12" (300x300x3mm)	<b>EON-B-1212</b>
12"x12" (300x300x5mm)	<b>EON-D-1212-5</b>	12"x12" (300x300x5mm)	<b>EON-B-1212-5</b>

# Preventive Strategy Innovation in Sidewalk Maintenance

The TripStop™ Sidewalk Hinge Joint System is designed to allow sidewalk slabs to move uniformly with tree root growth, soil movement and thermal expansion while improving safety and accessibility by eliminating tripping hazards and liability.

## PRODUCT FEATURES

- Compact design and lightweight construction
- All TripStop™ products come as a complete product set, including TripStop™ Pegs and Wedges
- Exceptional performance in all weather conditions
- Versatile and easy installation
- Customizable sizes
- TripStop™ preserves mature trees and benefits the environment
- Maintenance free 10 year warranty

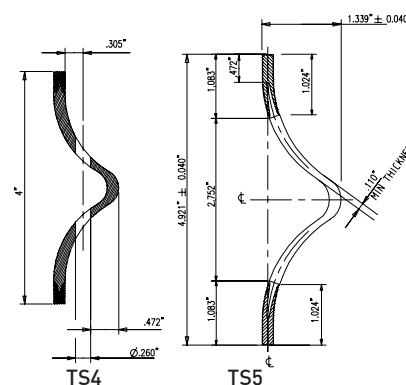
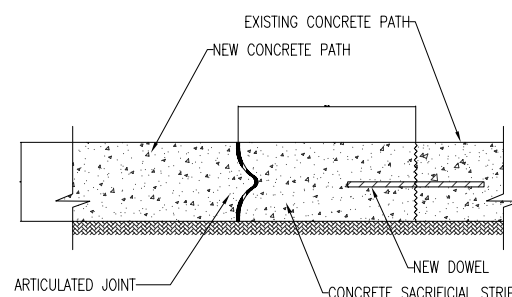
## STANDARD COLOUR



Light Grey  
CODE: LG



The TripStop™ Sidewalk Hinge Joint System helps to Prevent Sidewalk Trip Hazards



## TRIPSTOP SIZES

DIMENSIONS H x L	PRODUCT CODE	GALVANIZED STEEL PIN PRODUCT CODE	GALVANIZED STEEL PIN SIZE & QUANTITY	SIDEWALK SLAB DIMENSIONS H x L x W
4"x48" (101x1220 mm)	<b>TS100S-44</b>	TSP4	10" (254 mm) x 3 PINS	4"x48"x48" (101x1220x1220 mm)
4"x60" (101x1524 mm)	<b>TS100S-45</b>	TSP4	10" (254 mm) x 4 PINS	4"x60"x60" (101x1524x1524 mm)
5"x48" (127x1220 mm)	<b>TS125S-54</b>	TSP5	12" (254 mm) x 3 PINS	5"x48"x48" (127x1220x1220 mm)
5"x60" (127x1524 mm)	<b>TS125S-55</b>	TSP5	12" (305 mm) x 4 PINS	5"x60"x60" (127x1524x1524 mm)
5"x120" (127x3048 mm)	<b>TS125S-510</b>	TSP5	12" (305 mm) x 8 PINS	5"(127mm) x CUT TO FIT



Specifications are subject to change.

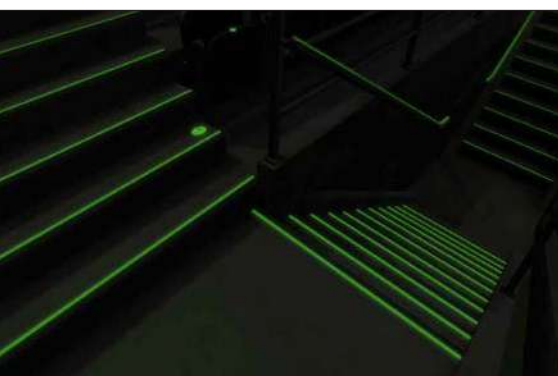
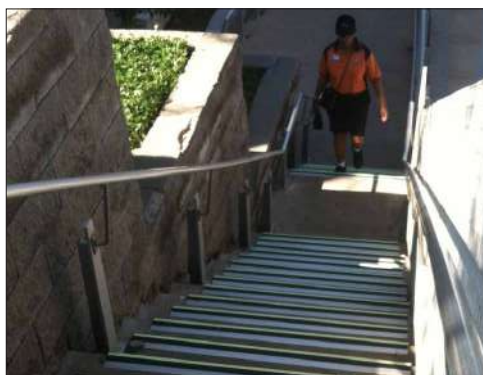
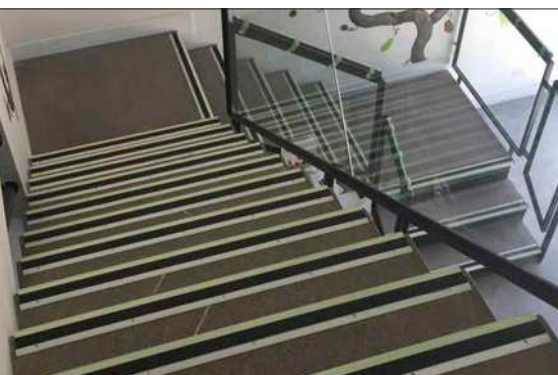




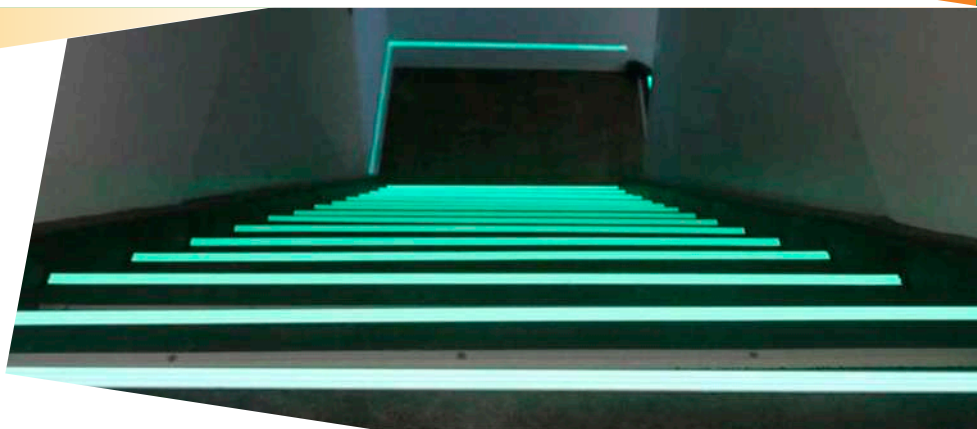
## Introducing the **visibly better** solution in life safety systems and risk management.

Ecoglo is a leading global innovator of UL certified photoluminescent egress markings, exit signs and emergency signage that exceed worldwide code requirements. Ecoglo has a reputation for innovative, durable products designed to work in the real world. Ecoglo products are manufactured using a patented process which produces fast-charging and long-lasting photoluminescent performance that is UV stable and highly durable.

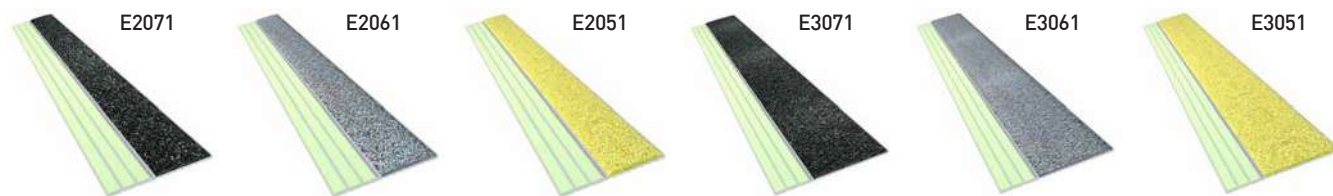
Ecoglo photoluminescent products will enhance patron safety in venues helping to prevent trips, slips and falls in all light conditions. *With Ecoglo, you'll never miss a step!*



## Safety Way Guidance



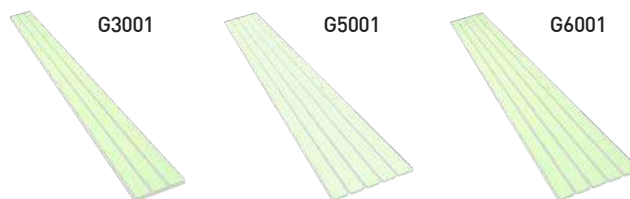
### E Series Leading Edge Contrast Strips



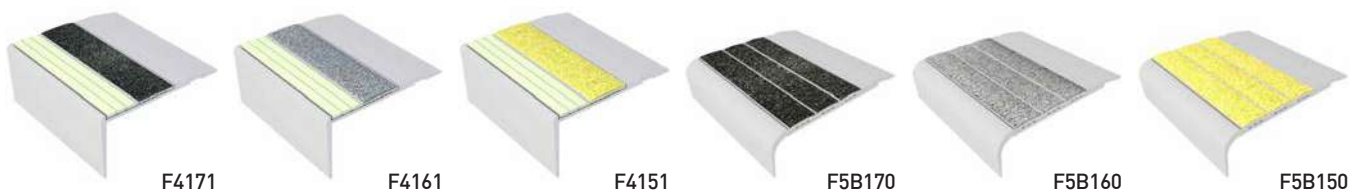
### N Series Leading Edge Contrast Strips Non-Photoluminescent



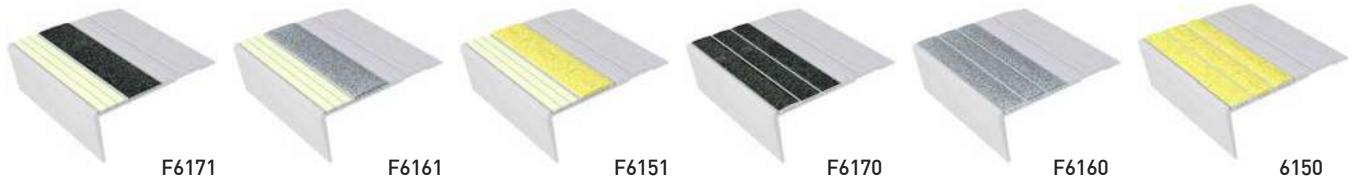
### G Series Guidance Wall Strips Photoluminescent



### Stair Nosings - F Series Flat Stair Nosings



## Stair Nosings - F Series Flat Stair Nosings



F6171

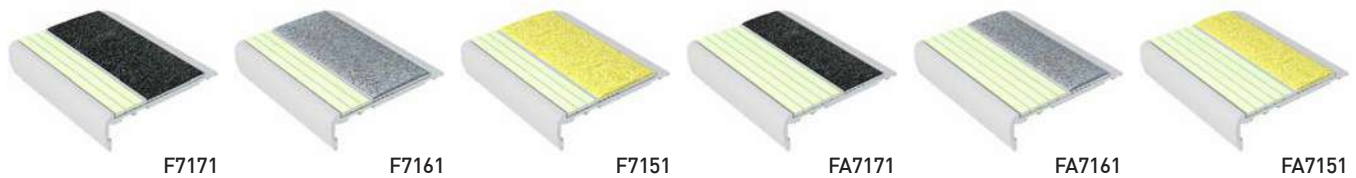
F6161

F6151

F6170

F6160

6150



F7171

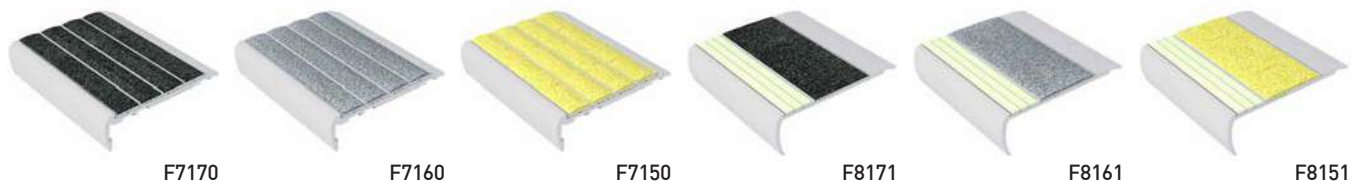
F7161

F7151

FA7171

FA7161

FA7151



F7170

F7160

F7150

F8171

F8161

F8151

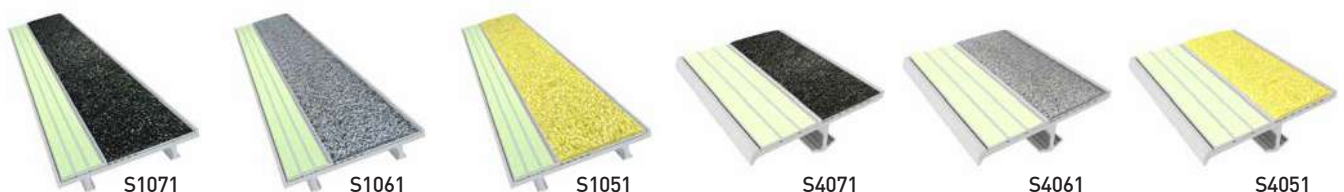


F8170

F8160

F8150

## Concrete Nosings - S Series Cast In Place Inserts



S1071

S1061

S1051

S4071

S4061

S4051



## Tile Nosings - M Series



M4171.10

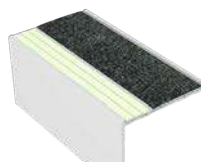


M4161.10

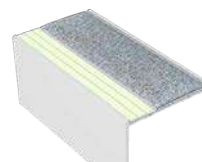


M4151.10

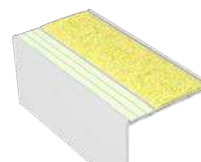
## Resilient Flooring Stair Nosings



RF7B171



RF7B161



RF7B151

## Carpet Nosings - C Series Carpet Stair Nosings



C4171



C4161



C4151



C5170



C5160



C5150

## Carpet Nosings - RC Series Carpet Stair Nosings



RCA5171



RCA5161



RCA5151

## Pathmarking Exit Signs



RA02012  
EXIT TO THE  
RIGHT



RB02012  
EXIT TO THE  
LEFT



RC02012  
EXIT DOWN AND  
TO THE RIGHT



RD02012  
EXIT DOWN AND  
TO THE LEFT



RE02012  
EXIT UP AND TO  
THE RIGHT



RF02012  
EXIT UP AND TO  
THE LEFT



RG02012  
EXIT STRAIGHT  
AHEAD AND UP



RH02012  
EXIT STRAIGHT  
AHEAD AND DOWN

# Running Man Exit Signs

## Photoluminescent and Electric Exit Signs Hybrid Running Man Series

The Ecoglo Running Man Hybrid Exit Signs are the no compromise solution for exit signage incorporating the safest backup technology and sophisticated design. Advanced manufacturing processes and elegant finish add a unique refined appearance to both the sign and the space in which it is installed. The Ecoglo Hybrid Running Man Exit Signs incorporates LED luminance and photoluminescent which requires no batteries or back up power source when power outages occur. This high efficient system provides visibility for more than 120 minutes and is certified for a rating of 75 feet visibility.



## Photoluminescent Exit Signs Architectural Running Man Series

All of our Ecoglo Running Man Architectural Exit Signs are elegantly designed with bevelled edges to provide a simple and sophisticated aesthetic to any exit space. Available in 75 foot or 50 foot ratings, operational for more than 120 minutes in a blackout event. LEED qualifiable for energy conservation for photoluminescent and self-luminous exit signs. The Ecoglo Running Man Architectural Series Exit Signs are available in Wall Mount, Ceiling Mount and Flag Mount styles.

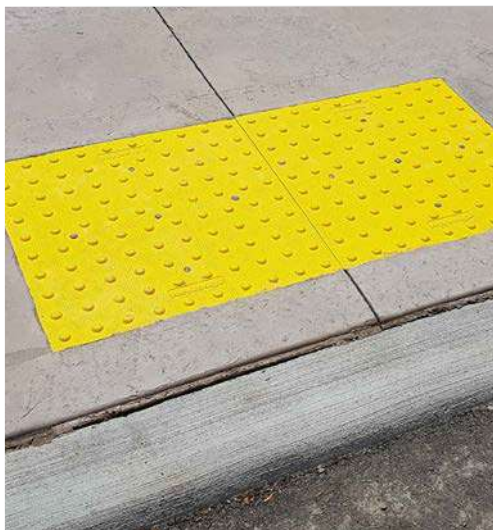
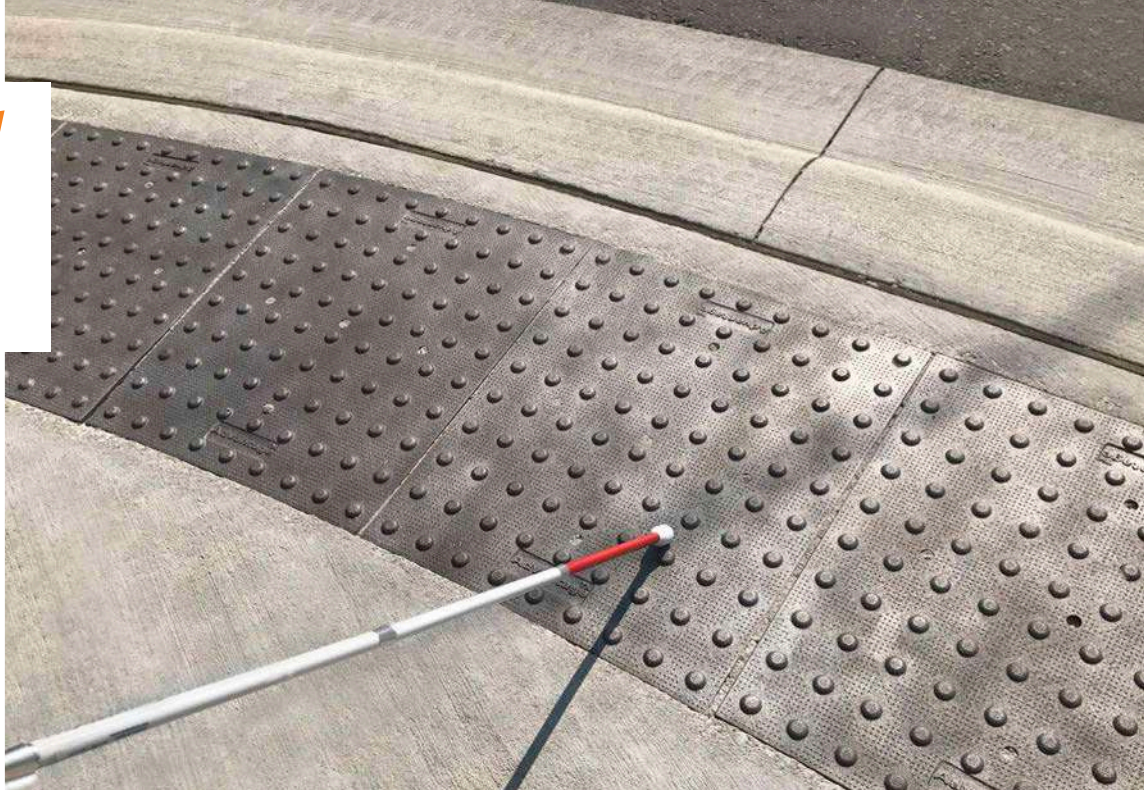


## Photoluminescent Exit Signs Standard Running Man Series

Our Running Man Standard Series Exit Signs are fully legible for 120 minutes after a "lights out" failure and have a visibility rating of 50 or 75 feet. LEED point qualifier for energy conservation and sustainability ULC S572 listed for Photoluminescent and Self-Luminous. The Ecoglo Running Man Standard Series Exit Signs are available in Wall Mount, Ceiling Mount and Flag Mount styles.







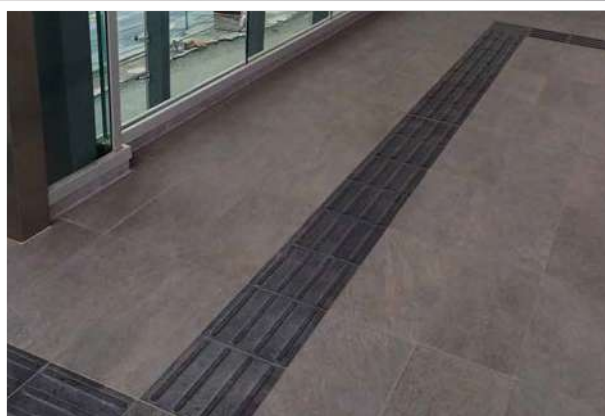
Our Tactile Curve Calculators Make Your Job Easier!  
Located on [www.Kinesik.ca](http://www.Kinesik.ca) - Kinesik Resources Page



Please contact our Sales or Engineering Department,  
directly if you have any enquiries,  
quote requests and upcoming projects:  
[quotes@kinesik.ca](mailto:quotes@kinesik.ca) • [techsupport@kinesik.ca](mailto:techsupport@kinesik.ca)  
(855) 364-7763

Please refer to [www.kinesik.ca](http://www.kinesik.ca) for more information on our products,  
engineering and installation services.









*ENGINEERED PRODUCTS*

The Power of Intelligent Design and  
Precision Engineering™

Kinesik Engineered Products Incorporated  
Sheridan Research Park

2213 North Sheridan Way  
Mississauga, Ontario L5K 1A3  
[www.kinesik.ca](http://www.kinesik.ca)

Phone: 855.364.7763  
Fax: 800.769.4463  
[orderdesk@kinesik.ca](mailto:orderdesk@kinesik.ca)