

# Archipel Vinyl • Engineered Luxury Vinyl

## Benefits

### Family friendly (including pet)

- 100% Waterproof
- Ultra-durable wear layer with ceramic bead technology
- Easy to clean
- Stain resistant, including pet stains

### Safe and healthy

- Made of virgin PVC (no recycled content) ensuring a uniform composition that doesn't contain any harmful substances.
- Antimicrobial protective treatment to inhibit the growth of mold and mildew
- Phthalates Free products meaning that they will not affect your quality of life
- FloorScore® Certified for compliance with rigorous indoor air quality requirements
- E1 Certified meaning that the product meets the European standard for indoor air quality

### Performant and durable construction

- Ultra-durable wear layer with ceramic bead technology
- High-density rigid core vinyl planks (SPC)
- Very sturdy - can withstand heavy furniture such as kitchen cabinets and islands
- Performs in extreme temperatures (-4 to 122 °F / -20 to 50 °C)
- Commercial abrasion resistance
- BLC Certified ® - Ensures that the floor covering you're buying surpasses industry quality standards

### Easy maintenance

- 100% Waterproof
- Antimicrobial, anti-mold and anti-fungal
- Easy to clean
- Stain resistant, including pet stains

### Easy and versatile Installation

- Floating installation
- 2 in 1 - comes with an attached underlayment
- Can be installed in 3-season cottages (-4 to 122 °F / -20 to 50 °C)
- No acclimation required
- Compatible with embedded radiant heating
- Can be installed on all floor levels
- No telegraphing, even when installed over hard surface flooring
- Minimal floor preparation
- Installations of up to 4225 sq. ft. (65 linear ft.) in an open space without transition moldings
- Matching moldings available

### Quiet and comfortable

- Cork backing for greater temperature and sound insulation
- High soundproofing ratings (IIC/STC)

### Notable look

- Enhanced painted bevels for a realistic wood look
- Wide and long planks
- Mat finish

### Best-in-class Warranty

- No Questions Asked Replacement

### Quickship

- Stock product for faster delivery

# Archipel Vinyl • Engineered Luxury Vinyl

## Product Specifications

<b>Market Segments</b>	Hospitality, Pro, Residential, Workspace
<b>Brand</b>	HydraLuxe Rigid
<b>Sub Category</b>	SPC
<b>Collection</b>	Archipel
<b>Construction</b>	Engineered Luxury Vinyl
<b>Format</b>	Plank
<b>Abrasion Resistance</b>	General Commercial Use
<b>Material</b>	Virgin PVC
<b>Core Material</b>	70% Calcium Carbonate / 30% Virgin PVC
<b>Width</b>	8.976" (228 mm)
<b>Total Thickness</b>	0.256" (6.5 mm)
<b>Wear Layer Thickness</b>	0.0200" (0.5000 mm)
<b>Core Thickness</b>	0.1970" (5.0000 mm)
<b>Backing</b>	Cork
<b>Backing Thickness</b>	0.0590" (1.5000 mm)
<b>Edges</b>	4-Sided Macro Painted Bevel
<b>Locking System</b>	Välinge 5G: Drop Lock
<b>Finish</b>	Registered Embossed
<b>Top Surface</b>	UV-Cured Polyurethane & Ceramic Bead Technology
<b>Gloss</b>	Mat
<b>Pattern Repeat</b>	4
<b>IIC</b>	73
<b>STC</b>	72
<b>Design</b>	Oak
<b>Formaldehyde</b>	E1
<b>Vinyl Thickness</b>	n/a
<b>Length</b>	72.047" (1830 mm)
<b>Certifications</b>	BLC Certification, Virgin PVC, FloorScore, E1 Certified, Phthalates Free, QuickShip
<b>Installation Methods</b>	Floating, Compatible with embedded radiant heating
	<a href="#">🔗 Rigid Engineered Luxury Vinyl Installation Guide - Välinge 5G</a>
	<a href="#">🔗 Rigid Engineered Luxury Vinyl Installation Video - Välinge 5G System</a>

## Warranties

- [🔗 Rigid Engineered Luxury Vinyl Warranty Guide](#)
- [🔗 Rigid Engineered Luxury Vinyl Maintenance Guide](#)

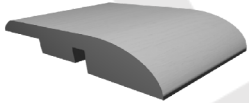
<b>Residential use</b>	<i>Fade Lifetime</i> <i>Petproof Lifetime</i> <i>Wear Lifetime</i> <i>Manufacturing Defects Lifetime</i> <i>No Questions Asked Replacement Minimum 30 days</i> <i>Stain Resistance Lifetime</i> <i>Waterproof Lifetime</i>
<b>Commercial use</b>	<i>Stain Resistance 15 Years</i> <i>Petproof Lifetime</i> <i>Wear 15 Years</i> <i>Waterproof Lifetime</i> <i>Manufacturing Defects 15 Years</i> <i>Fade 15 Years</i>

# Archipel Vinyl • Engineered Luxury Vinyl

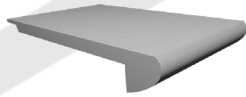
## Packaging information

<b>Units Per Box</b>	6
<b>Boxes Per Pallet</b>	52
<b>Box Weight</b>	48.24 Pounds (21881.50 Grams)
<b>Square Meters Per Box</b>	2.50
<b>Square Meters Per Pallet</b>	130.19
<b>Square Feet Per Box</b>	26.95
<b>Square Feet Per Pallet</b>	1401.4

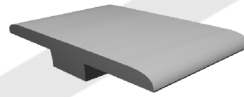
## Moldings



**Reducer**  
Matching  
94.488" X 0.354" X 1.771"  
(2400 mm X 9 mm X 45 mm)



**Flushmount Stair Nose - Round**  
Matching  
94.488" X .984" X 2.834"  
(2400 mm X 25 mm X 72 mm)



**T-Molding**  
Matching  
94.488" X 0.354" X 1.771"  
(2400 mm X 9 mm X 45 mm)



**Flushmount Stair Nose - Square**  
Matching  
94.488" X 1.378" X 4.449"  
(2400 mm X 35 mm X 113 mm)

# Archipel

Vinyl • Engineered Luxury Vinyl

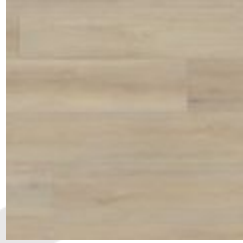
## Styles offered



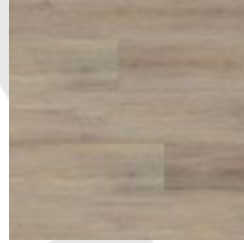
**#2316 (Plank)**  
Andamas  
Registered Embossed



**#2317 (Plank)**  
Antilles  
Registered Embossed



**#2318 (Plank)**  
Comores  
Registered Embossed



**#2319 (Plank)**  
Galapagos  
Registered Embossed



**#2320 (Plank)**  
Malay  
Registered Embossed



**#2321 (Plank)**  
Seychelles  
Registered Embossed



**#2322 (Plank)**  
Cape Hope  
Registered Embossed



**#2323 (Plank)**  
Copeland  
Registered Embossed



**#2324 (Plank)**  
Marshall  
Registered Embossed



**#2325 (Plank)**  
Marvin  
Registered Embossed



**#2326 (Plank)**  
Montebello  
Registered Embossed



**#2327 (Plank)**  
Rosario  
Registered Embossed