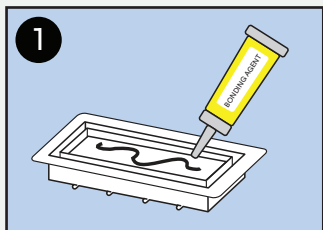


## Materials Needed

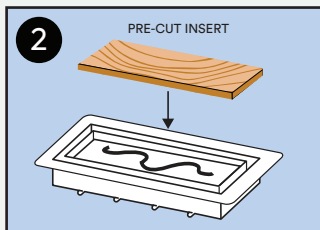
- Pre-cut piece of surface material for tray insert.  
(Size will vary for vent sizes).
- Bonding material (will vary for flooring materials).

## \*NOTE\*

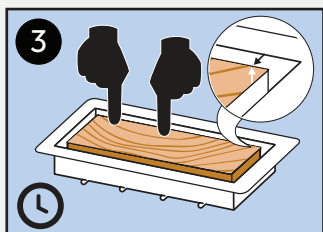
- If duct opening is larger than the Base of the vent, use additional screws to add strength.



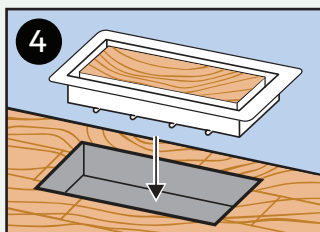
Apply adhesive bond in **Tray**.



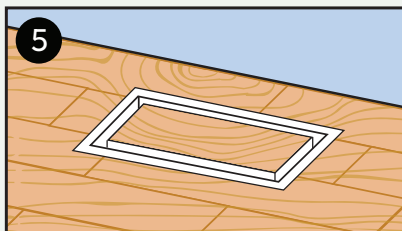
Insert pre-cut flooring material.



Apply even pressure so the floor material is level to rim of **Tray**.  
Let cure.



Insert vent in place.



Enjoy!

## \*Control Air Flow\*

No airflow included with this model. See which **Lite Dampers** are compatible with this product at [www.ariavent.com](http://www.ariavent.com)

## Additional Support

[support@fittes.com](mailto:support@fittes.com) / [www.fittes.com](http://www.fittes.com)