



Comfort Grip Trowels

49915-12 / 49916-12 / 49917-12 / 49919-12

DURABLE

11" x 4.5" rustproof stainless steel blade

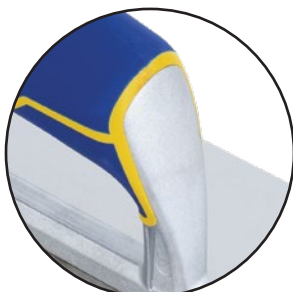
STURDY

Extra handle-to-shank distance allows maximum hand clearance and complete hand rotation

SUPERIOR STRENGTH

9-1/8" zinc die-cast shank with 9 rivets, 2 of which are exposed toe rivets

49915-12



COMFORT

Co-molded plastic handle with non-slip, rubber grip for comfortable repeat use

| Item# | Notch Size | Case Qty | Application |
|----------|---------------------------|----------|---|
| 49915-12 | 1/4" x 1/4" x 1/4" SQ | 12 | For application of thinset on tile up to 8" x 8", laminated wood plank flooring and flat milled solid flooring |
| 49916-12 | 1/4" x 3/8" x 1/4" SQ | 12 | For application of thinset while installing 8" x 8" to 16" x 16" tile |
| 49917-12 | 3/16" x 5/32" V | 12 | For application of thinset and mastic on drywall, mosaics, and installing select plank flooring and cove bases |
| 49919-12 | 1/2" x 1/2" x 1/2" SQ | 12 | For application of thinset or medium bed mortar on natural stone, quarry tile, pavers, saltillo and ceramic tile measuring 12" x 12" and larger |

SCAN HERE FOR PRODUCT INFO



The QEP® Comfort Grip Stainless Steel Trowels are crafted with high quality materials for an extended life. With a rustproof, 11" x 4.5" blade, these trowel are great for professional installations and multi-use, DIY renovation projects. They feature 9 rivets, two of which are reinforced for durability, reducing the chances of trowel breakage, even in the most challenging installations.

Professional Tools for Professional Results

qep.com

03123-12242