



# Comfort Grip Trowels

49915 / 49916 / 49917 / 49919

## STURDY

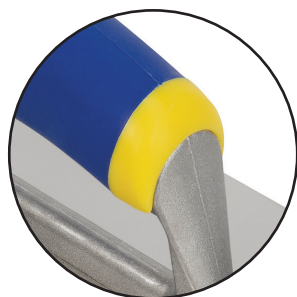
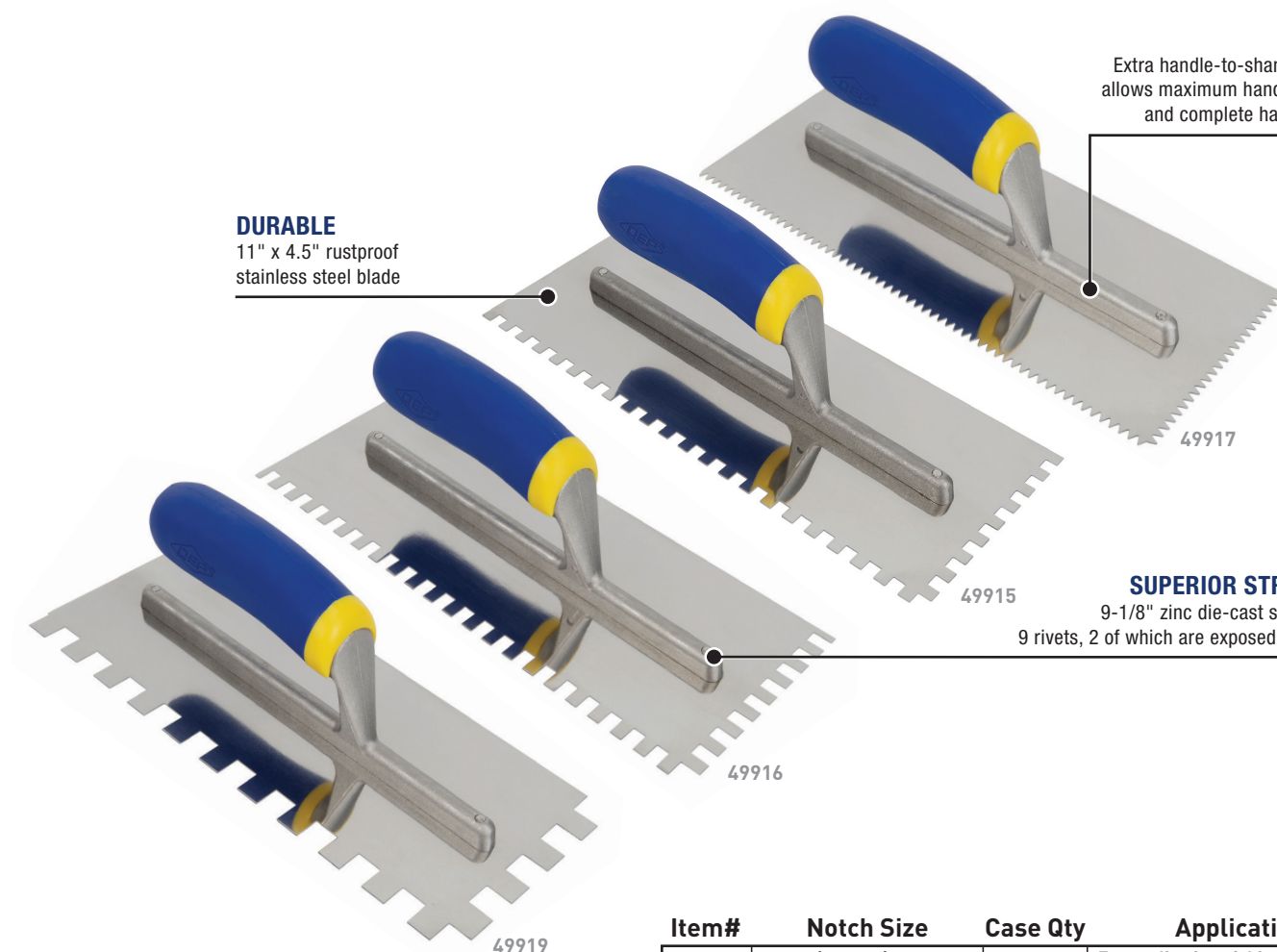
Extra handle-to-shank distance allows maximum hand clearance and complete hand rotation

## DURABLE

11" x 4.5" rustproof stainless steel blade

## SUPERIOR STRENGTH

9-1/8" zinc die-cast shank with 9 rivets, 2 of which are exposed toe rivets



## COMFORT

Co-molded plastic handle with non-slip, rubber grip for comfortable repeat use

Item#	Notch Size	Case Qty	Application
49917	3/16" x 5/32" V	12	For application of thinset and mastic on drywall, mosaics, and installing select plank flooring and cove bases
49915	1/4" x 1/4" x 1/4" SQ	12	For application of thinset on tile up to 8" x 8", laminated wood plank flooring and flat milled solid flooring
49916	1/4" x 3/8" x 1/4" SQ	12	For application of thinset while installing 8" x 8" to 16" x 16" tile
49919	1/2" x 1/2" x 1/2" SQ	12	For application of thinset or medium bed mortar on natural stone, quarry tile, pavers, saltillo and ceramic tile measuring 12" x 12" and larger

The QEP® Comfort Grip Stainless Steel Trowels are crafted with high quality materials for an extended life. With a rustproof, 11" x 4.5" blade, these trowel are great for professional installations and multi-use, DIY renovation projects. They feature 9 rivets, two of which are reinforced for durability, reducing the chances of trowel breakage, even in the most challenging installations.

Professional Tools for Professional Results

[www.QEP.com](http://www.QEP.com)