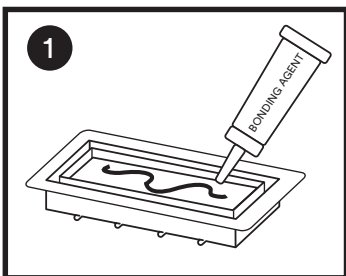


Aria Lite Installation Guide

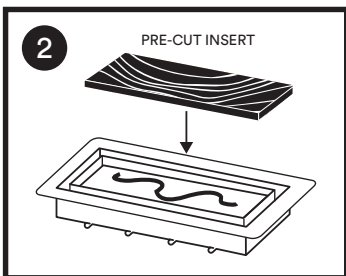
Materials Needed

- pre-cut 8 1/16" x 2 1/16" piece of your floor material to fit in center tray.
- bonding material (will vary per floor type).

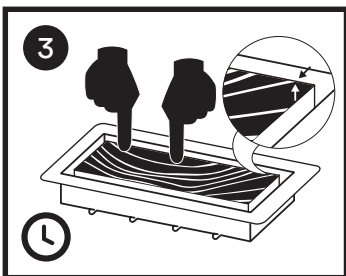
Instructions



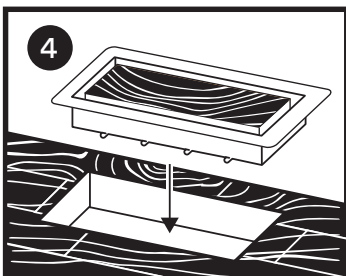
Apply adhesive bond in tray.



Insert pre-cut floor material.



Apply even pressure so floor material is level to rim of tray.
Let cure.



Insert Aria Vent in place. Enjoy!

*No airflow adjustment on this model

Support

support@ariavent.com
ariavent.com

✪ Manufactured entirely in Canada

Patent information

www.ariavent.com/pages/patents