



# Profiles & Trims Commercial Solutions

## Product Selection Catalog

Take Your Design to the Edge™

Effective October 1, 2025

**LATICRETE offers a comprehensive selection of profiles and trims designed to meet the demands of commercial projects. With a broad range of materials, finishes, and colors in various shapes and sizes, these solutions make it easy to achieve both functional and design goals. German-engineered and precision-manufactured, LATICRETE® Profiles & Trims deliver superior quality, ensuring seamless installations and a lasting, professional finish.**





**ABOUT LATICRETE**

4-13

Brand Promises ..... 4  
 Warranties ..... 5  
 Global Solutions ..... 6-7  
 Customer Support ..... 8  
 Training ..... 9  
 Installation Systems ..... 12-13  
 LATICRETE Portfolio ..... 14-15



**TILE PROFILES**

16-27

L-Shape Edge Profiles ..... 17-18  
 Square Edge Profiles ..... 19-20  
 Round Edge Profiles ..... 21-23  
 Cove Profiles ..... 24-27



**STAIR NOSING & TRANSITION PROFILES**

28-31

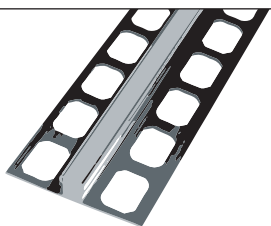
Stair Nosing Profiles ..... 29-30  
 Transition Profiles ..... 30-31



**SKIRTING & CORNER PROTECTION PROFILES**

32-35

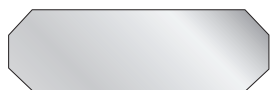
Skirting Profiles ..... 33-34  
 Corner Protection Profiles ..... 35



**EXPANSION & MOVEMENT JOINT PROFILES**

36-38

Expansion & Movement Joint Profiles ..... 37-38



**RESOURCE GUIDE**

40-47

Part Number Explanation & Codes ..... 40-41  
 Finish/Color Swatches ..... 42  
 Profiles Material Characteristics & Maintenance ..... 43  
 Service Terms ..... 44-45  
 Notes ..... 46-47



Icon indicates a standard LATICRETE color available in LATICRETE Grouts, Profiles & Trims, and Caulks & Sealants.



Additional Profiles & Trims available at [laticrete.com/profiles](https://laticrete.com/profiles).

All pricing effective October 1, 2025 and subject to change. See page 44-45 for service terms. Consult our website at [laticrete.com](https://laticrete.com) for the most current version of product data sheets, warranties, and MSDS sheets. The content of this catalog is for informational purposes only. Finishes and color swatches are guides only. LATICRETE does not warrant color matching to the color chart or to any color guide produced. Actual shade and texture will depend on job site conditions, lighting, installation techniques and types/color of the product used, and may vary from the finishes/colors shown. Verify actual appearance and compatibility before installing. No claims for color shade variations will be honored. The colors and finishes shown may not be available in all profile materials, shapes, and sizes. Contact customer service or your LATICRETE Sales Representative for confirmation.



# OUR PROMISE TO YOU

The LATICRETE Brand Promises are a company-wide global initiative that builds upon our legacy of research and development of innovative installation products, systems and solutions.

They serve as a call-to-action and highlight six strategic areas of focus:

- Developing innovative solutions,
- Committing to sustainability,
- Enabling iconic design,
- Fostering trust for life,
- Providing the best installer experience, and
- Serving customers as family.



These promises are the cornerstone of our company mission.



# UNMATCHED PEACE OF MIND

LATICRETE offers you the best system warranties in the industry. Rest easy knowing that when you install one of our systems, the job is built to last.



## LIFETIME SYSTEM WARRANTY

\*See Data Sheet 230.99 for complete warranty information.

APPLICATION	PRODUCTS
<b>Underlayment</b>	NXT® LEVEL Plus Lite NXT LEVEL Plus Skim Lite NXT Patch
<b>Floor Warming<sup>^</sup></b>	STRATA_HEAT™ Wire STRATA_HEAT STRATA_HEAT Thermal Packs 4-XLT with STRATA_HEAT Thermal Packs <sup>††</sup>
<b>Waterproofing/ Anti-Fracture</b>	HYDRO BAN® HYDRO BAN XP 9235 Waterproofing Membrane
<b>Waterproofing</b>	HYDRO BAN Sheet Membrane HYDRO BAN Quick Cure
<b>Shower System</b>	HYDRO BAN Pre-Sloped Shower Pan (and applicable accessories) HYDRO BAN Linear Pre-Sloped Shower Pan (and applicable accessories) HYDRO BAN Shower and HYDRO BAN Shower Kits (and applicable accessories) HYDRO BAN Linear Drain (and applicable accessories) HYDRO BAN Bonding Flange Drain (and applicable accessories) HYDRO BAN Board (and applicable accessories) 4-XLT <sup>^</sup>
<b>Uncoupling</b>	STRATA_MAT™ STRAT_MAT XT
<b>Primer</b>	Primer Plus PRIME-N-BOND™
<b>Thick Bed Mortar</b>	3701 Fortified Mortar Bed 3701 Lite Mortar or 3701 Lite Mortar R Quick Cure Mortar Bed
<b>Slurry Bond Coat</b>	254 PLATINUM™ 254 PLATINUM PLUS
<b>Thin Bed Method</b>	254 PLATINUM (regular or rapid version) 254 PLATINUM PLUS LATAPOXY® 300 Adhesive or BIOGREEN™ 300
<b>Large, Heavy Tile Method</b>	MULTIMAX™ LITE
<b>Grout</b>	SPECTRALOCK® PRO Premium Grout SPECTRALOCK 1 Pre-Mixed Grout PERMACOLOR® Select <sup>^^</sup>
<b>Profiles &amp; Trims</b>	Stainless Steel Aluminum <sup>**</sup>
<b>Sealant<sup>†</sup></b>	LATASIL™ LATASIL 9118 Primer

† Use of suitable flexible sealant is required per Tile Council of North America Detail E1171 for use in expansion joints, coves, corners, changes in plane and other joints or wherever tile or stone abuts dissimilar materials or restraining surfaces.

\*\*Residential projects only.

Δ 4-XLT for use to install HYDRO BAN® Pre-Sloped Shower Pans to substrate only.

^ Floor Warming Thermostat and STRATA\_HEAT™ Thermostat sold by LATICRETE warrants parts and materials for one (1) year from the date of purchase. The sole remedy for the Floor Warming Thermostats and STRATA\_HEAT Thermostats is product replacement (see Data Sheet 230.13 for full details on the LATICRETE® Product Limited Warranty).

†† 4-XLT with STRATA\_MAT™ Thermal Packs when used as a large & heavy tile adhesive mortar.

^^United States Patent No.: 6,784,229 (and other Patents).

Consult our website at [laticrete.com](http://laticrete.com) for the most current versions of product data sheets, warranties, and SDS. Content of this catalog is for informational purposes only. Refer to individual product data sheets and warranties for complete information.



## 25 YEAR SYSTEM WARRANTY

\*See Data Sheet 025.0 for complete warranty information.

APPLICATION	PRODUCTS
<b>Air Barrier Components (exterior veneers only)</b>	MVIS™ Air & Water Barrier LATAPOXY® Waterproof Flashing Mortar LATICRETE Flashing Sealant
<b>Underlayment</b>	NXT® LEVEL Plus Lite NXT LEVEL Plus SUPERCAP® SC500 PLUS Skim Lite NXT Patch
<b>Primer</b>	Primer Plus PRIME-N-BOND™
<b>Floor Warming<sup>^</sup></b>	STRATA_HEAT™ Wire STRATA_HEAT STRATA_HEAT Thermal Packs ††4-XLT with STRATA_HEAT Thermal Packs
<b>Vapor Reduction</b>	VAPOR BAN™ E VAPOR BAN ER VAPOR BAN Primer ER
<b>Waterproofing/Anti-Fracture</b>	HYDRO BAN® HYDRO BAN XP 9235 Waterproofing Membrane
<b>Waterproofing</b>	HYDRO BAN Sheet Membrane LATAPOXY Waterproof Flashing Mortar HYDRO BAN Cementitious Waterproofing Membrane HYDRO BAN Quick Cure
<b>Shower System</b>	HYDRO BAN Pre-Sloped Shower Pan (and applicable accessories) HYDRO BAN Linear Pre-Sloped Shower Pan (and applicable accessories) HYDRO BAN Shower and HYDRO BAN Shower Kits HYDRO BAN Linear Drain (and applicable accessories) HYDRO BAN Bonding Flange Drain (and applicable accessories) HYDRO BAN Board (and applicable accessories) 4-XLT <sup>^</sup>
<b>Sound Control/Anti-Fracture</b>	125 TRI MAX® 170.3 or 170.5 Sound & Crack Isolation Mat FRACTURE BAN™ 40 or 90
<b>Plaza &amp; Deck</b>	Plaza and Deck System
<b>Uncoupling</b>	STRATA_MAT™ STRATA_MAT XT
<b>Thick Bed Method</b>	3701 Fortified Mortar Bed 3701 Lite Mortar/3701 Lite Mortar R Quick Cure Mortar Bed
<b>Slurry Bond Coat</b>	254 PLATINUM™ PLUS 254 PLATINUM
<b>Thin Bed/Adhesive Method</b>	254 PLATINUM PLUS 254 PLATINUM (regular or rapid version) LATAPOXY 300 Adhesive or BIOGREEN™ 300 Glass Tile Adhesive Lite
<b>Large, Heavy Tile Method</b>	MULTIMAX™ LITE TRI-LITE™ TRI-LITE RAPID
<b>Spot Bonding</b>	LATAPOXY 310 Stone Adhesive – Standard and Rapid Grade
<b>Grouting/Pointing</b>	SPECTRALOCK® PRO Premium Grout (non-industrial applications) SPECTRALOCK 1 Pre-Mixed Grout PERMACOLOR® Grout PERMACOLOR Select
<b>Profiles &amp; Trims</b>	Aluminum Brass Stainless Steel
<b>Sealant<sup>†</sup></b>	LATASIL™ LATASIL 9118 Primer

# GLOBALLY PROVEN

**W**hat started in a basement in New Haven, CT more than 65 years ago has grown into a reliable, global supply network. LATICRETE® system solutions have been used in the most prestigious and demanding projects around the world. From the bustling streets and subways of New York City to the world's tallest building in Dubai, LATICRETE products are trusted and used throughout the world, whatever the project, whatever the environment.

With business units, distribution and manufacturing facilities on almost every continent (except for Antarctica), our global network can help any project and meet any challenge, with a track record earned over generations.



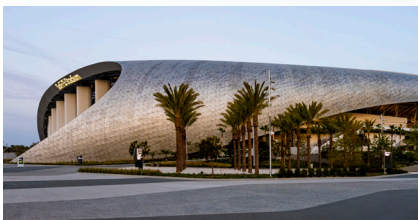
One World Trade Center | New York, US



St. Louis Gateway Arch | Missouri, US



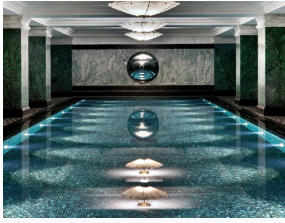
Seminole Hard Rock Casino & Hotel | Florida, US



SoFi Stadium | California, US



Baha Mar | Nassau, Bahamas



**The Ned Hotel | London, UK**



**Ritz Carlton | Budapest, Hungary**



**Statue of Unity | Gujarat, India**



**Beijing National Aquatics Centre  
| Beijing, China**



**Marina Bay Sands Infinity  
Edge Pool | Singapore**



**Al Hamra Tower | Kuwait**



**The Palm Atlantis | Dubai UAE**

# WORLD CLASS TECHNICAL SUPPORT

**Y**ou're never alone when working with LATICRETE. Our Technical Services team is available to answer any and all questions you may have when it comes to installing our products. Reach out anytime, and one of our in-house experts will get you the answers you're looking for.



Call Us  
1-800-243-4788 x1235



Email Us  
technicalservices@laticrete.com



Live Chat  
laticrete.com – M-F 8a-5p EST



[FAQs](#)  
Frequently Asked Questions

# RESOURCES

**G**et the tools you need to design with confidence.

LATICRETE provides a comprehensive suite of resources to streamline the specification process and support every phase of your project.

- Samples for Submittal Packages
- Full CSI Approved, 3-Part Written Specifications
- CAD Details
- LEED Project Certification
- BIM Objects Library
- ANSI Standard Product Selector
- Database of TCNA Methods and Installation Types
- Technical and Safety Data Sheets



Need profile samples for your submittal packages?



Order samples today at [laticrete.com/Samples](https://laticrete.com/Samples).



## LATICRETE Architectural Guidebook

Our architectural guidebook is your online resource tool for accessing everything you need to plan your project, including custom specifications for over 100 installation types.

Also available through our industry partners:

**MasterSpec**® **SpecLink** **ARCAT**



Online resource tool available at [laticrete.com/ag](https://laticrete.com/ag).

# EDUCATION & TRAINING MADE EASY

Take advantage of FREE training engineered with your needs in mind. Stay up to date with the latest products, industry standards, and help get new employees up to speed fast. We offer a variety of convenient programs, and if there is a topic or product you need more training on, let us know.



## LATICRETE University

Learn industry standards and the latest product information in short, self-guided lessons available 24/7. Check them out at [laticreteuniversity.com](http://laticreteuniversity.com).



## On-Site Demos & Training

Need training for associates or customers? Schedule a demo to help improve the knowledge of your team or boost in-store sales with customers. Reach out to a sales rep to schedule.



PROFIT THROUGH KNOWLEDGE  
T R A I N I N G

## Profit Through Knowledge

Get hands-on with LATICRETE products and learn step by step installations from our expert installers. Contact our technical services team to discuss potential trainings.



## YouTube Videos

Tips and tricks, product announcements, how-tos and more! Be sure to subscribe to the LATICRETE channel to stay up to date on the latest videos.



## American Institute of Architects Certified Courses

Earn AIA credits, and learn the latest industry standards, how to avoid installation failures, and get tools designed to streamline the specification process. Full course listing at [laticrete.com/aiaces](http://laticrete.com/aiaces).



## International Design Continuing Education Council

Strengthen your understanding and skills in designing a project, creating boldly unique projects that will stand the test of time.



Scan to learn more about Education & Training

# Unlock a World of

*LATICRETE Now Offers Profiles & Trims!*

Profile: Square Edge, Texture Coated Aluminum in Matte Black |

Caulk & Sealant: LATAFIL™ |

Grout: SPECTRALOCK® 1 |

Tile Adhesive: 254 PLATINUM™ |

Waterproofing Membrane: HYDRO BAN® Board |

Drain: HYDRO BAN Drains |

Self-Leveling Underlayment: NXT® Level Plus |

Radiant Floor Heating Components: |

STRATA\_HEAT™ Mat and STRATA\_HEAT Spliceless Wire

With an extensive selection of shapes, sizes, and finishes for profiles and trims, we make it even easier for you to find a complete system solution from the substrate up.



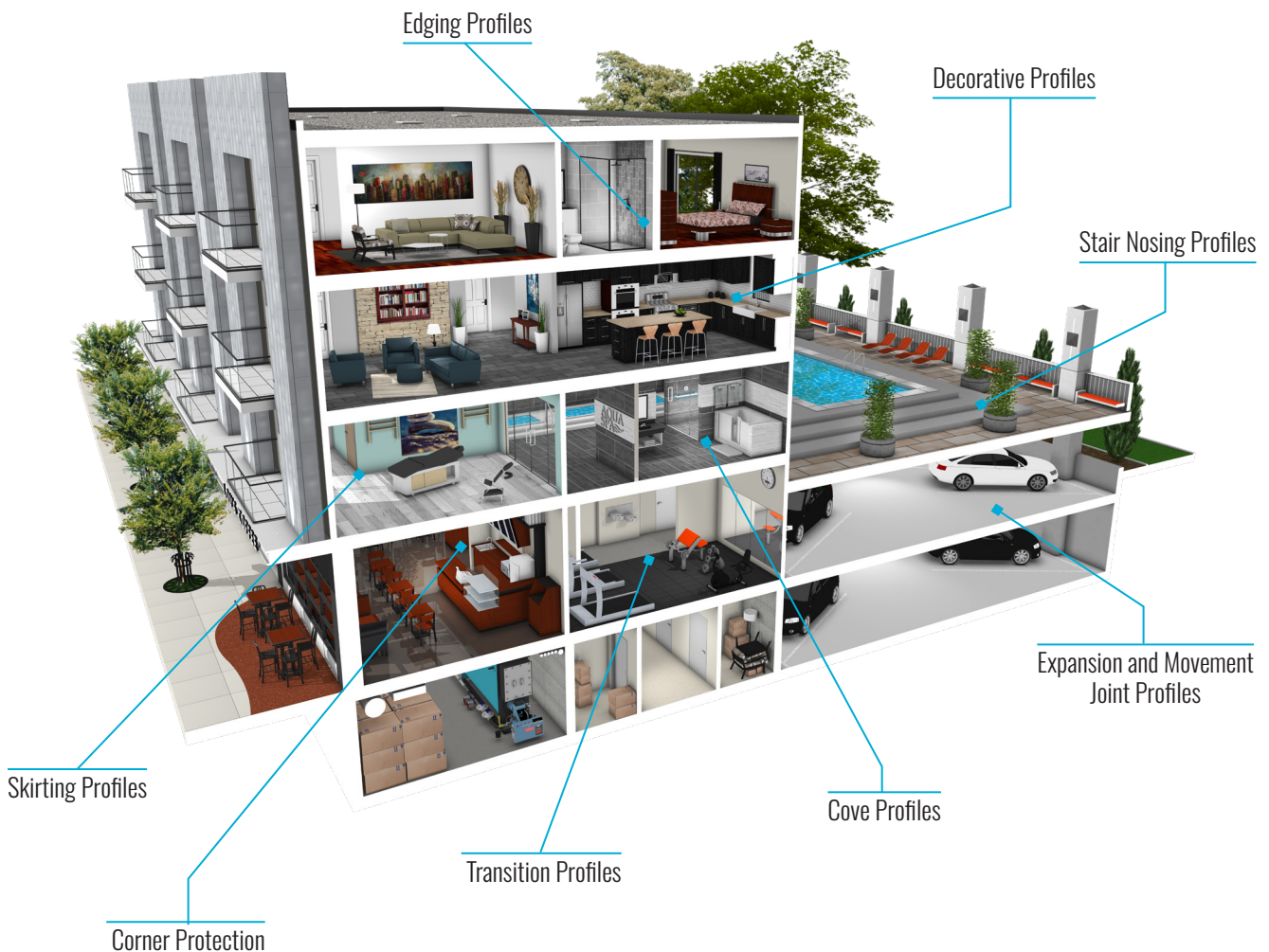


# ONE SOURCE. LIMITLESS CAPABILITIES.

## From Profiles to the Complete LATICRETE® System.

LATICRETE® Profiles and Trims do more than just finish an edge — they protect, transition, and elevate commercial installations. From edging profiles and movement joints to stair nosings, coves, and transitions, our solutions provide durability, safety, and a polished aesthetic for tile, stone, terrazzo, wood, LVT, and other surfaces.

Beyond profiles, LATICRETE offers a complete system solution for commercial durability and seamless installation. Whether it's a multifamily unit, hotel, retail space, or other project, our installation systems integrate effortlessly with our profiles to deliver long-lasting, high-performance results — all from a single, trusted source.



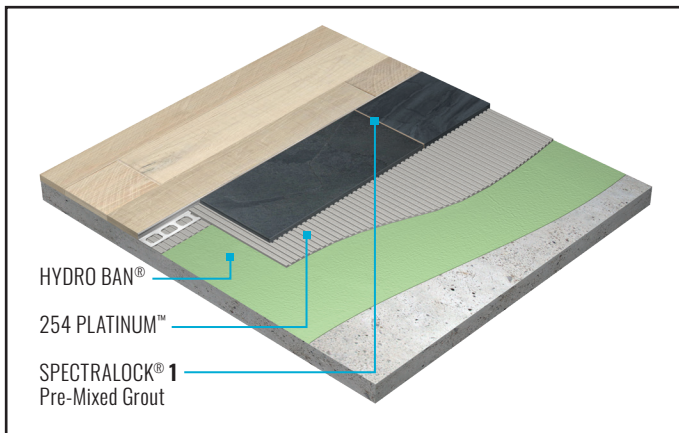
## We've Got You Covered.

Specify, design, install, or sell a complete single source installation system from the substrate up — all backed by a 100% labor and materials system warranty. Let our experience, product quality, and technical support assist you on your next project — whatever the application.

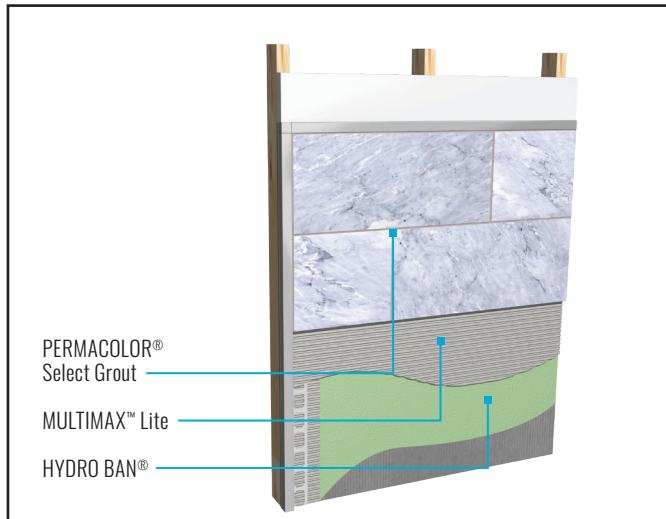
### FLOOR TO WALL INSTALLATION SYSTEMS

Design seamless transitions from tile to wood, carpet, and more.

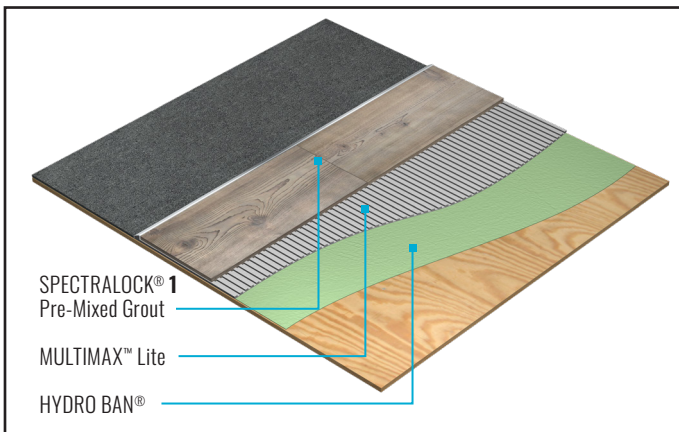
L-SHAPED EDGE PROFILE



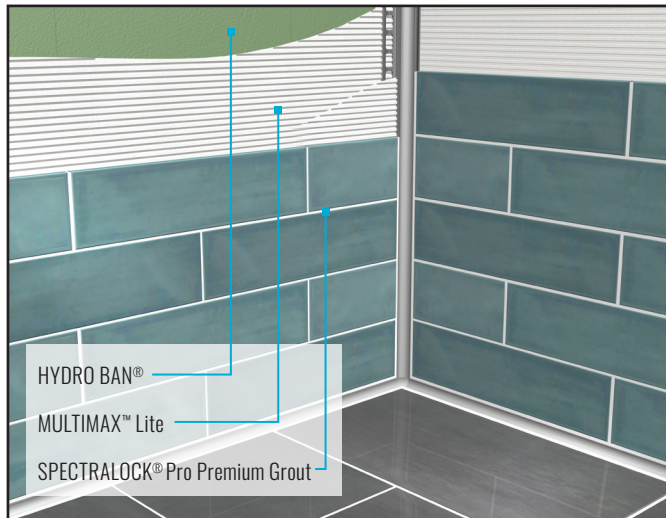
SQUARE EDGE PROFILE



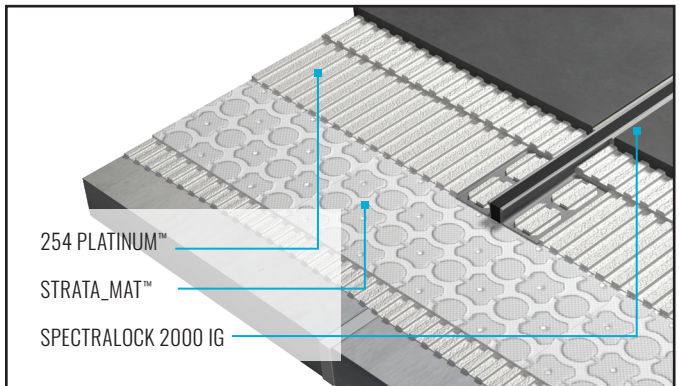
TRANSITION PROFILE



COVE PROFILE



EXPANSION & MOVEMENT JOINTS



# BUILDING SYSTEM SOLUTIONS

Since 1956, LATICRETE has been at the forefront of the industry, leading with pioneering advancements that redefine high-performance tile and stone installation systems and building finishing solutions. We strive to empower architects and construction professionals worldwide with top-notch support and building material solutions.



## Tile & Stone Installation Systems



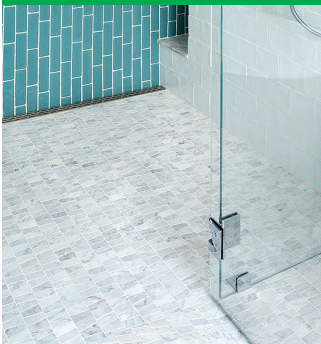
### CSI Division 9

Ensure a successful installation each and every time with the most comprehensive assortment of innovative tile and stone installation materials available worldwide. Our industry-leading products offer complete

system solutions from the substrate up through the grout for virtually any type of tile or stone installation in commercial, industrial, and residential applications.

Product categories include surface preparation, waterproofing, shower systems, sound control, anti-fracture, floor heating, adhesive mortars, grouts, sealers, cleaners, profiles & trims — all designed to work together, providing a comprehensive installation solution.

## Shower Installation Systems



### CSI Division 9 & 22

The HYDRO BAN® shower system provides everything needed for a worry-free installation. As a single-source supplier for shower installation systems, we offer waterproof membranes, shower pans, benches, niches and drains

all with the trusted performance expected from the HYDRO BAN waterproofing line.

Complete your shower by choosing from our adhesives, grouts, sealants and caulks for a beautiful installation that is backed by the industry's best warranty.

## Radiant Floor Heating



### CSI Division 9 & 23

The STRATA\_HEAT™ system is the most advanced radiant floor heating system available in the world. Consisting of a high-performance floor heating wire, an uncoupling mat, two Wi-Fi enabled thermostats and the world's first heat

conductive thin-set additive — the system provides you with the most advanced and efficient floor heating system for your next installation.

## Concrete & Substrate Preparation



### CSI Division 3 & 9

A quality finished floor starts with a properly prepared surface — one that guarantees a long-lasting, durable installation. Our time-tested surface preparation products are formulated to preserve quality by protecting

installations from moisture vapor transmission, sound transmission and cracks. They provide a perfectly level and flat substrate to accommodate a variety of floor finishes including resilient flooring, wood, carpet and tile.

When combined with the SUPERCAP® System, a high-volume, time-saving delivery system that can pump material up to 50 stories high, you can expect predictable quality results. L&M™ curing and sealing treatments, floor hardeners, densifiers and polished concrete systems further ensure your floors are safe, resilient, and easy to maintain.

From reliable time-tested classics to groundbreaking innovations, our extensive product portfolio offers superior quality and unbeatable support. We are fully committed to a complete system approach, and our offerings align seamlessly with CSI specification sections.

## Profiles & Trims



### CSI Division 9

Whether looking for a sleek, modern look or a more traditional design, this line offers the flexibility and versatility to achieve any aesthetic in commercial and residential applications. Available in aluminum, stainless steel, brass, and

PVC, these profiles and trim pieces are crafted with the utmost precision, to create premium-quality and a consistent appearance from piece to piece.

Our profiles and trims can protect tile edges and enhance safety all while providing a decorative finishing touch to any room. The comprehensive line includes edging in various shapes, coves, stair nosing, skirting, transitions, and expansion joints - and is compatible with various flooring such as tile, carpet, vinyl, wood and more.

## Tile, Stone & Surface Care



### CSI Division 9

Reliable and high-performing surface care solutions branded STONETECH®, are designed to clean, protect, restore and enhance. Highly effective at preventing oil, water and stain damage, this range offers natural-look sealers that protect

porous stone and tile surfaces but do not alter the surface appearance as well as enhancing sealers that can revive the color or finish of a surface all while protecting.

STONETECH cleaners ranging from daily to heavy duty problem-solving solutions will eliminate everyday spills and restore the appearance without harming the intended surface. Preserve the beauty of stone, tile, and grout with STONETECH.

## Adhered Façade & Wall Finish Systems



### CSI Division 4 & 7

Keep up with the increasing popularity of adhered masonry veneers. Trust your installations to a complete productivity-boosting system designed to deliver superior, long-term performance on masonry projects of all types including residential,

commercial, and industrial applications.

Unlike traditional methods and materials, our Masonry Veneer Installation System (MVIS™) is engineered to create permanent, high-strength installations that use a revolutionary waterproofing technology to protect against weather and water intrusion, as well as provide freeze/thaw stability. MVIS is designed for thin-brick, manufactured stone and natural stone veneers for interior and exterior applications.

## Pedestals and Plaza & Deck Systems



### CSI Division 7 & 9

Transform rooftops, balconies, terraces, and virtually any outdoor space with our pedestal and plaza & decking systems.

The NXT® Pedestal System lets you create elevated surfaces using a wide variety of finishes including pavers, wood, and more. With

only three main components, installs are fast and easy, adaptable to nearly any challenge, and still allow access to the substrate below.

The Plaza & Deck system allows you to create a more seamlessly bonded and waterproofed installation with tile, pavers, brick, or stone – while dramatically improving drainage – helping your project stand up to the toughest outdoor conditions for years to come.

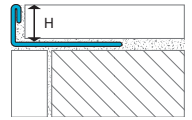
A close-up photograph showing a LATICRETE tile profile installed in a corner. The profile is a dark, textured strip that fits snugly between two light-colored, square tiles. The profile has a beveled edge and a fine, grid-like texture. The tiles are set in a dark grout. The profile is shown in a corner where two tiles meet, demonstrating its use for protecting exposed tile edges.

## TILE PROFILES

PAGE 16 - 27

**LATICRETE® Tile Profiles are essential for protecting exposed tile edges, preventing damage such as chipping or cracking, and ensuring clean, professional transitions between surfaces. Designed to meet the demands of commercial projects, they safeguard tile installations while enhancing the overall design. With options ranging from decorative-shaped edges to coves and various materials, finishes, and colors, these profiles combine functionality with the ability to elevate any commercial space.**

**L-SHAPE EDGE PROFILES** provide a clean, seamless border while protecting exposed tile edges and defining transitions between materials of equal height. These versatile profiles add a polished, professional finish to tile installations on floors, walls, and countertops, combining functionality with style.



### L-SHAPE EDGE PROFILES MADE OF STAINLESS STEEL 304

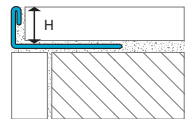
#### POLISHED STAINLESS STEEL (GLOSS)

Height (in)	Height (mm)	Item Number	Price Each
Length: 8' 2-1/2" (2.5 m)			
5/16	8.0	LS5-E080GLO-01	\$29.71
3/8	10.0	LS5-E100GLO-01	\$31.35
1/2	12.5	LS5-E125GLO-01	\$32.41



#### BRUSHED STAINLESS STEEL

Height (in)	Height (mm)	Item Number	Price Each
Length: 8' 2-1/2" (2.5 m)			
5/16	8.0	LS5-E080BRU-01	\$36.74
3/8	10.0	LS5-E100BRU-01	\$38.73
1/2	12.5	LS5-E125BRU-01	\$40.07

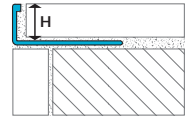


### L-SHAPE EDGE PROFILES MADE OF STAINLESS STEEL 316

#### POLISHED STAINLESS STEEL (GLOSS)

Height (in)	Height (mm)	Item Number	Price Each
Length: 8' 2-1/2" (2.5 m)			
5/16	8.0	LS5-V080GLO-01	\$33.65
3/8	10.0	LS5-V100GLO-01	\$34.74
1/2	12.5	LS5-V125GLO-01	\$36.73

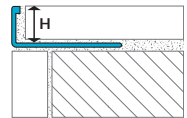




L-SHAPE EDGE PROFILES MADE OF ALUMINUM

NATURAL ALUMINUM

Height (in)	Height (mm)	Item Number	Price Each
Length: 8' 2-1/2" (2.5 m)			
3/16	4.5	LS1-A045NAT-01	\$9.50
5/16	8.0	LS1-A080NAT-01	\$10.92
3/8	10.0	LS1-A100NAT-01	\$10.72
7/16	11.0	LS1-A110NAT-01	\$11.08
1/2	12.5	LS1-A125NAT-01	\$11.27



L-SHAPE EDGE PROFILES MADE OF ANODIZED ALUMINUM

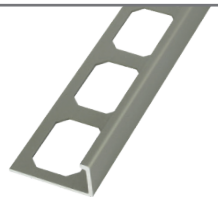
SATIN ALUMINUM

Height (in)	Height (mm)	Item Number	Price Each
Length: 8' 2-1/2" (2.5 m)			
5/16	8.0	LS2-A080SAT-01	\$15.05
3/8	10.0	LS2-A100SAT-01	\$15.95
7/16	11.0	LS2-A110SAT-01	\$16.99
1/2	12.5	LS2-A125SAT-01	\$17.10



SATIN NICKEL

Height (in)	Height (mm)	Item Number	Price Each
Length: 8' 2-1/2" (2.5 m)			
5/16	8.0	LS2-A080SNI-01	\$18.38
3/8	10.0	LS2-A100SNI-01	\$18.73
1/2	12.5	LS2-A125SNI-01	\$19.35



BRUSHED NICKEL

Height (in)	Height (mm)	Item Number	Price Each
Length: 8' 2-1/2" (2.5 m)			
5/16	8.0	LS2-A080BNI-01	\$21.15
3/8	10.0	LS2-A100BNI-01	\$21.60
1/2	12.5	LS2-A125BNI-01	\$22.54



POLISHED CHROME

Height (in)	Height (mm)	Item Number	Price Each
Length: 8' 2-1/2" (2.5 m)			
5/16	8.0	LS2-A080PCR-01	\$18.92
3/8	10.0	LS2-A100PCR-01	\$20.92
1/2	12.5	LS2-A125PCR-01	\$22.14

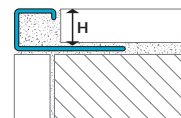


BRUSHED CHROME

Height (in)	Height (mm)	Item Number	Price Each
Length: 8' 2-1/2" (2.5 m)			
5/16	8.0	LS2-A080BCR-01	\$19.43
3/8	10.0	LS2-A100BCR-01	\$21.49
1/2	12.5	LS2-A125BCR-01	\$22.69



**SQUARE EDGE PROFILES** provide clean, straight lines and a bold design that complements various styles. Both functional and stylish, these profiles protect exposed tile edges while elevating the overall appearance. Optional corner pieces ensure seamless transitions around corners, making them an excellent choice for walls and countertops.



**SQUARE EDGE PROFILES MADE OF STAINLESS STEEL 304**

**POLISHED STAINLESS STEEL (GLOSS)**

Height (in)	Height (mm)	Item Number	Price Each
Length: 8' 2-1/2" (2.5 m)			
5/16	8.0	SQ5-E080GLO-01	\$42.19
3/8	10.0	SQ5-E100GLO-01	\$45.32
1/2	12.5	SQ5-E125GLO-01	\$48.28



**POLISHED STAINLESS STEEL (GLOSS) - ACCESSORIES**

Height (in)	Height (mm)	Item Number	Price Each
Outside / Inside Corners*			
5/16	8.0	SQ5-E080GLO-11	\$31.92
3/8	10.0	SQ5-E100GLO-11	\$34.49
1/2	12.5	SQ5-E125GLO-11	\$35.39



**BRUSHED STAINLESS STEEL**

Height (in)	Height (mm)	Item Number	Price Each
Length: 8' 2-1/2" (2.5 m)			
5/16	8.0	SQ5-E080BRU-01	\$63.93
3/8	10.0	SQ5-E100BRU-01	\$68.66
1/2	12.5	SQ5-E125BRU-01	\$73.16

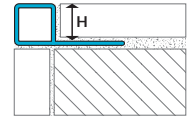


**BRUSHED STAINLESS STEEL - ACCESSORIES**

Height (in)	Height (mm)	Item Number	Price Each
Outside / Inside Corners*			
5/16	8.0	SQ5-E080BRU-11	\$38.28
3/8	10.0	SQ5-E100BRU-11	\$41.34
1/2	12.5	SQ5-E125BRU-11	\$42.36



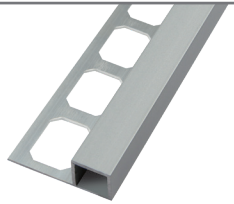
\* All Square Edge Corner pieces can be used both as inside and outside corners.



SQUARE EDGE PROFILES MADE OF ANODIZED ALUMINUM

SATIN ALUMINUM

Height (in)	Height (mm)	Item Number	Price Each
Length: 8' 2-1/2" (2.5 m)			
5/16	8.0	SQ2-A080SAT-01	\$19.04
3/8	10.0	SQ2-A100SAT-01	\$20.59
7/16	11.0	SQ2-A110SAT-01	\$21.68
1/2	12.5	SQ2-A125SAT-01	\$22.99



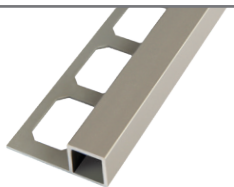
SATIN ALUMINUM – ACCESSORIES

Height (in)	Height (mm)	Item Number	Price Each
Outside / Inside Corners*			
5/16	8.0	SQ2-A080SAT-11	\$8.31
3/8	10.0	SQ2-A100SAT-11	\$8.31
7/16	11.0	SQ2-A110SAT-11	\$8.31
1/2	12.5	SQ2-A125SAT-11	\$8.31



SATIN NICKEL

Height (in)	Height (mm)	Item Number	Price Each
Length: 8' 2-1/2" (2.5 m)			
5/16	8.0	SQ2-A080SNI-01	\$20.56
3/8	10.0	SQ2-A100SNI-01	\$21.90
1/2	12.5	SQ2-A125SNI-01	\$24.39



SATIN NICKEL – ACCESSORIES

Height (in)	Height (mm)	Item Number	Price Each
Outside / Inside Corners*			
5/16	8.0	SQ2-A080SNI-11	\$8.14
3/8	10.0	SQ2-A100SNI-11	\$8.14
1/2	12.5	SQ2-A125SNI-11	\$8.14



BRUSHED NICKEL

Height (in)	Height (mm)	Item Number	Price Each
Length: 8' 2-1/2" (2.5 m)			
5/16	8.0	SQ2-A080BNI-01	\$25.19
3/8	10.0	SQ2-A100BNI-01	\$28.04
1/2	12.5	SQ2-A125BNI-01	\$30.28



BRUSHED NICKEL – ACCESSORIES

Height (in)	Height (mm)	Item Number	Price Each
Outside / Inside Corners*			
5/16	8.0	SQ2-A080BNI-11	\$15.07
3/8	10.0	SQ2-A100BNI-11	\$15.07
1/2	12.5	SQ2-A125BNI-11	\$15.07



POLISHED CHROME

Height (in)	Height (mm)	Item Number	Price Each
Length: 8' 2-1/2" (2.5 m)			
5/16	8.0	SQ2-A080PCR-01	\$25.86
3/8	10.0	SQ2-A100PCR-01	\$28.52
1/2	12.5	SQ2-A125PCR-01	\$33.42



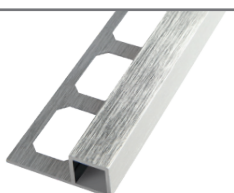
POLISHED CHROME – ACCESSORIES

Height (in)	Height (mm)	Item Number	Price Each
Outside / Inside Corners*			
5/16	8.0	SQ2-A080PCR-11	\$9.85
3/8	10.0	SQ2-A100PCR-11	\$9.85
1/2	12.5	SQ2-A125PCR-11	\$9.85



BRUSHED CHROME

Height (in)	Height (mm)	Item Number	Price Each
Length: 8' 2-1/2" (2.5 m)			
5/16	8.0	SQ2-A080BCR-01	\$33.48
3/8	10.0	SQ2-A100BCR-01	\$39.08
1/2	12.5	SQ2-A125BCR-01	\$45.77



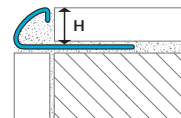
BRUSHED CHROME – ACCESSORIES

Height (in)	Height (mm)	Item Number	Price Each
Outside / Inside Corners*			
5/16	8.0	SQ2-A080BCR-11	\$13.87
3/8	10.0	SQ2-A100BCR-11	\$13.87
1/2	12.5	SQ2-A125BCR-11	\$13.87



\* All Square Edge Corner pieces can be used both as inside and outside corners.

**ROUND EDGE PROFILES** offer a stylish solution with smooth, rounded edges that add a refined decorative touch while protecting tiles from chipping and cracking. Designed for versatility, optional outside and inside corner accessories ensure seamless transitions. These profiles are ideal for walls and countertops blending functionality with modern elegance.



**ROUND EDGE PROFILES MADE OF STAINLESS STEEL 304**

**POLISHED STAINLESS STEEL (GLOSS)**

Height (in)	Height (mm)	Item Number	Price Each
Length: 8' 2-1/2" (2.5 m)			
5/16	8.0	R05-E080GLO-01	\$39.89
3/8	10.0	R05-E100GLO-01	\$42.83
1/2	12.5	R05-E125GLO-01	\$45.62



**POLISHED STAINLESS STEEL (GLOSS) - ACCESSORIES**

Height (in)	Height (mm)	Item Number	Price Each
<b>Outside Corners</b>			
5/16	8.0	R05-E080GLO-04	\$29.14
3/8	10.0	R05-E100GLO-04	\$31.30
1/2	12.5	R05-E125GLO-04	\$32.40
<b>Inside Corners</b>			
5/16	8.0	R05-E080GLO-08	\$29.14
3/8	10.0	R05-E100GLO-08	\$31.30
1/2	12.5	R05-E125GLO-08	\$32.40



**BRUSHED STAINLESS STEEL**

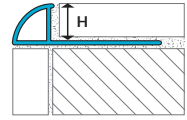
Height (in)	Height (mm)	Item Number	Price Each
Length: 8' 2-1/2" (2.5 m)			
5/16	8.0	R05-E080BRU-01	\$61.15
3/8	10.0	R05-E100BRU-01	\$63.88
1/2	12.5	R05-E125BRU-01	\$66.67



**BRUSHED STAINLESS STEEL - ACCESSORIES**

Height (in)	Height (mm)	Item Number	Price Each
<b>Outside Corners</b>			
5/16	8.0	R05-E080BRU-04	\$32.93
3/8	10.0	R05-E100BRU-04	\$37.98
1/2	12.5	R05-E125BRU-04	\$37.98
<b>Inside Corners</b>			
5/16	8.0	R05-E080BRU-08	\$32.93
3/8	10.0	R05-E100BRU-08	\$37.98
1/2	12.5	R05-E125BRU-08	\$37.98





ROUND EDGE PROFILES MADE OF ANODIZED ALUMINUM

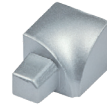
SATIN ALUMINUM

Height (in)	Height (mm)	Item Number	Price Each
Length: 8' 2-1/2" (2.5 m)			
5/16	8.0	R02-A080SAT-01	\$18.19
3/8	10.0	R02-A100SAT-01	\$19.66
7/16	11.0	R02-A110SAT-01	\$20.38
1/2	12.5	R02-A125SAT-01	\$21.95



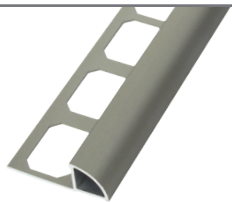
SATIN ALUMINUM – ACCESSORIES

Height (in)	Height (mm)	Item Number	Price Each
Outside Corners			
5/16	8.0	R02-A080SAT-04	\$7.70
3/8	10.0	R02-A100SAT-04	\$7.70
7/16	11.0	R02-A110SAT-04	\$7.70
1/2	12.5	R02-A125SAT-04	\$7.70
Inside Corners			
5/16	8.0	R02-A080SAT-08	\$7.70
3/8	10.0	R02-A100SAT-08	\$7.70
7/16	11.0	R02-A110SAT-08	\$7.70
1/2	12.5	R02-A125SAT-08	\$7.70



SATIN NICKEL

Height (in)	Height (mm)	Item Number	Price Each
Length: 8' 2-1/2" (2.5 m)			
5/16	8.0	R02-A080SNI-01	\$19.05
3/8	10.0	R02-A100SNI-01	\$19.92
1/2	12.5	R02-A125SNI-01	\$22.60



SATIN NICKEL – ACCESSORIES

Height (in)	Height (mm)	Item Number	Price Each
Outside Corners			
5/16	8.0	R02-A080SNI-04	\$7.77
3/8	10.0	R02-A100SNI-04	\$7.77
1/2	12.5	R02-A125SNI-04	\$7.77
Inside Corners			
5/16	8.0	R02-A080SNI-08	\$7.77
3/8	10.0	R02-A100SNI-08	\$7.77
1/2	12.5	R02-A125SNI-08	\$7.77



BRUSHED NICKEL

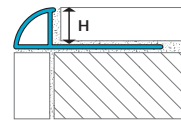
Height (in)	Height (mm)	Item Number	Price Each
Length: 8' 2-1/2" (2.5 m)			
5/16	8.0	R02-A080BNI-01	\$27.11
3/8	10.0	R02-A100BNI-01	\$29.78
1/2	12.5	R02-A125BNI-01	\$34.53



BRUSHED NICKEL – ACCESSORIES

Height (in)	Height (mm)	Item Number	Price Each
Outside Corners			
5/16	8.0	R02-A080BNI-04	\$14.23
3/8	10.0	R02-A100BNI-04	\$14.23
1/2	12.5	R02-A125BNI-04	\$14.23
Inside Corners			
5/16	8.0	R02-A080BNI-08	\$14.23
3/8	10.0	R02-A100BNI-08	\$14.23
1/2	12.5	R02-A125BNI-08	\$14.23





ROUND EDGE PROFILES MADE OF ANODIZED ALUMINUM

POLISHED CHROME

Height (in)	Height (mm)	Item Number	Price Each
Length: 8' 2-1/2" (2.5 m)			
5/16	8.0	R02-A080PCR-01	\$23.90
3/8	10.0	R02-A100PCR-01	\$26.47
1/2	12.5	R02-A125PCR-01	\$30.98



POLISHED CHROME - ACCESSORIES

Height (in)	Height (mm)	Item Number	Price Each
Outside Corners			
5/16	8.0	R02-A080PCR-04	\$9.13
3/8	10.0	R02-A100PCR-04	\$9.13
1/2	12.5	R02-A125PCR-04	\$9.13
Inside Corners			
5/16	8.0	R02-A080PCR-08	\$9.13
3/8	10.0	R02-A100PCR-08	\$9.13
1/2	12.5	R02-A125PCR-08	\$9.13



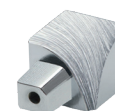
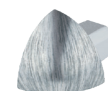
BRUSHED CHROME

Height (in)	Height (mm)	Item Number	Price Each
Length: 8' 2-1/2" (2.5 m)			
5/16	8.0	R02-A080BCR-01	\$24.53
3/8	10.0	R02-A100BCR-01	\$27.76
1/2	12.5	R02-A125BCR-01	\$32.27



BRUSHED CHROME - ACCESSORIES

Height (in)	Height (mm)	Item Number	Price Each
Outside Corners			
5/16	8.0	R02-A080BCR-04	\$14.37
3/8	10.0	R02-A100BCR-04	\$14.37
1/2	12.5	R02-A125BCR-04	\$14.37
Inside Corners			
5/16	8.0	R02-A080BCR-08	\$14.37
3/8	10.0	R02-A100BCR-08	\$14.37
1/2	12.5	R02-A125BCR-08	\$14.37

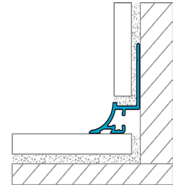


# COVE PROFILES

create seamless transitions where planes meet, such as between floors and walls. Their continuous radius eliminates hard corners, reducing dirt buildup and simplifying cleaning, making them ideal for high-traffic areas. Corner, end cap, and connector accessories ensure a consistent and polished design throughout the project.

## COVE PROFILES MADE OF ANODIZED ALUMINUM

### STYLE 1 – Single-Sided Connection



#### SATIN ALUMINUM

Height (in)	Height (mm)	Item Number	Price Each
Length: 8' 2-1/2" (2.5 m)			
5/16	8.0	C01-A080SAT-01	\$29.67
3/8	10.0	C01-A100SAT-01	\$30.89
1/2	12.5	C01-A125SAT-01	\$32.29



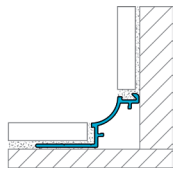
#### SATIN ALUMINUM – ACCESSORIES

Height (in)	Height (mm)	Item Number	Price Each
<b>Outside Corner</b>			
Fits all sizes		C01-AXXSAT-04	\$26.01
<b>Inside Corner</b>			
Fits all sizes		C01-AXXSAT-08	\$26.01
<b>Left End Cap</b>			
Fits all sizes		C01-AXXSAT-16	\$15.60
<b>Right End Cap</b>			
Fits all sizes		C01-AXXSAT-17	\$15.60



## COVE PROFILES MADE OF ANODIZED ALUMINUM

### STYLE 2 – Dual-Sided Connection



#### SATIN ALUMINUM

Height (in)	Height (mm)	Item Number	Price Each
Length: 8' 2-1/2" (2.5 m)			
5/16	8.0	C02-A080SAT-01	\$29.67
3/8	10.0	C02-A100SAT-01	\$30.89
1/2	12.5	C02-A125SAT-01	\$32.29

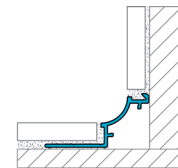


#### SATIN ALUMINUM – ACCESSORIES

Height (in)	Height (mm)	Item Number	Price Each
<b>Outside Corner</b>			
Fits all sizes		C02-AXXSAT-04	\$26.01
<b>Inside Corner</b>			
Fits all sizes		C02-AXXSAT-08	\$26.01
<b>Connector</b>			
Fits all sizes		C02-AXXXXX-14	\$4.40
<b>End Cap</b>			
Fits all sizes		C02-AXXSAT-15	\$15.60



**COVE PROFILES MADE OF ANODIZED ALUMINUM**  
**STYLE 2 – Dual-Sided Connection**



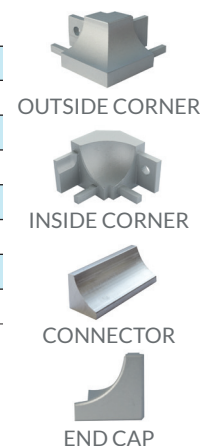
SATIN NICKEL

Height (in)	Height (mm)	Item Number	Price Each
<b>Length: 8' 2-1/2" (2.5 m)</b>			
3/8	10.0	CO2-A100SNI-01	\$35.59
1/2	12.5	CO2-A125SNI-01	\$37.01



SATIN NICKEL – ACCESSORIES

Height (in)	Height (mm)	Item Number	Price Each
<b>Outside Corner</b>			
Fits all sizes		CO2-AXXSNI-04	\$26.01
<b>Inside Corner</b>			
Fits all sizes		CO2-AXXSNI-08	\$26.01
<b>Connector</b>			
Fits all sizes		CO2-AXXXXX-14	\$4.40
<b>End Cap</b>			
Fits all sizes		CO2-AXXSNI-15	\$15.60



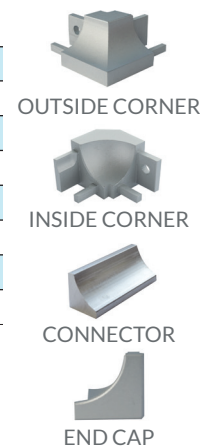
BRUSHED NICKEL

Height (in)	Height (mm)	Item Number	Price Each
<b>Length: 8' 2-1/2" (2.5 m)</b>			
3/8	10.0	CO2-A100BNI-01	\$50.72
1/2	12.5	CO2-A125BNI-01	\$52.14



BRUSHED NICKEL – ACCESSORIES

Height (in)	Height (mm)	Item Number	Price Each
<b>Outside Corner</b>			
Fits all sizes		CO2-AXXBNI-04	\$29.96
<b>Inside Corner</b>			
Fits all sizes		CO2-AXXBNI-08	\$29.96
<b>Connector</b>			
Fits all sizes		CO2-AXXXXX-14	\$4.40
<b>End Cap</b>			
Fits all sizes		CO2-AXXBNI-15	\$19.53



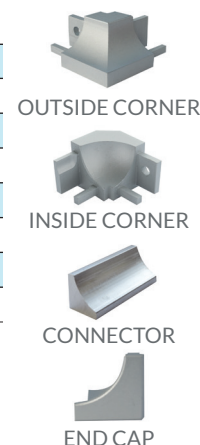
POLISHED CHROME

Height (in)	Height (mm)	Item Number	Price Each
<b>Length: 8' 2-1/2" (2.5 m)</b>			
3/8	10.0	CO2-A100PCR-01	\$52.47
1/2	12.5	CO2-A125PCR-01	\$53.64

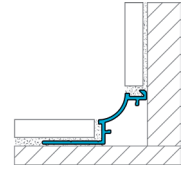


POLISHED CHROME – ACCESSORIES

Height (in)	Height (mm)	Item Number	Price Each
<b>Outside Corner</b>			
Fits all sizes		CO2-AXXPCR-04	\$29.96
<b>Inside Corner</b>			
Fits all sizes		CO2-AXXPCR-08	\$29.96
<b>Connector</b>			
Fits all sizes		CO2-AXXXXX-14	\$4.40
<b>End Cap</b>			
Fits all sizes		CO2-AXXPCR-15	\$19.53



**COVE PROFILES MADE OF ANODIZED ALUMINUM**  
**STYLE 2** – Dual-Sided Connection



BRUSHED CHROME

Height (in)	Height (mm)	Item Number	Price Each
Length: 8' 2-1/2" (2.5 m)			
3/8	10.0	C02-A100BCR-01	\$47.27
1/2	12.5	C02-A125BCR-01	\$48.67

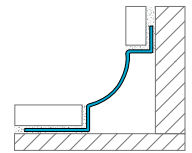


BRUSHED CHROME – ACCESSORIES

Height (in)	Height (mm)	Item Number	Price Each
<b>Outside Corner</b>			
Fits all sizes		C02-AXXXBCR-04	\$29.96
<b>Inside Corner</b>			
Fits all sizes		C02-AXXXBCR-08	\$29.96
<b>Connector</b>			
Fits all sizes		C02-AXXXXXX-14	\$4.40
<b>End Cap</b>			
Fits all sizes		C02-AXXXBCR-15	\$19.53



**COVE PROFILES MADE OF STAINLESS STEEL 304**  
**STYLE 5** – Dual-Sided Connection



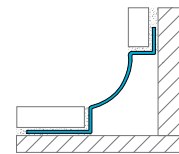
POLISHED STAINLESS STEEL (GLOSS)

Height (in)	Height (mm)	Item Number	Price Each
Length: 8' 2-1/2" (2.5 m)			
9/32	7.0	C05-E070GLO-01	\$63.22
11/32	9.0	C05-E090GLO-01	\$65.08
7/16	11.0	C05-E110GLO-01	\$67.15

POLISHED STAINLESS STEEL (GLOSS) – ACCESSORIES

Height (in)	Height (mm)	Item Number	Price Each
<b>Outside Corner</b>			
Fits all sizes		C05-EXXXGLO-04	\$19.72
<b>Inside Corner</b>			
Fits all sizes		C05-EXXXGLO-08	\$19.72
<b>Connector</b>			
9/32	7.0	C05-E070GLO-14	\$21.26
11/32	9.0	C05-E090GLO-14	\$21.26
7/16	11.0	C05-E110GLO-14	\$21.26
<b>Left End Cap</b>			
9/32	7.0	C05-E070GLO-16	\$21.26
11/32	9.0	C05-E090GLO-16	\$21.26
7/16	11.0	C05-E110GLO-16	\$21.26
<b>Right End Cap</b>			
9/32	7.0	C05-E070GLO-17	\$21.26
11/32	9.0	C05-E090GLO-17	\$21.26
7/16	11.0	C05-E110GLO-17	\$21.26

**COVE PROFILES MADE OF STAINLESS STEEL 304**  
**STYLE 5 – Dual-Sided Connection**



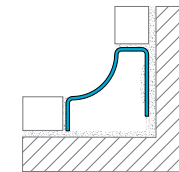
BRUSHED STAINLESS STEEL

Height (in)	Height (mm)	Item Number	Price Each
<b>Length: 8' 2-1/2" (2.5 m)</b>			
9/32	7.0	C05-E070BRU-01	\$82.18
11/32	9.0	C05-E090BRU-01	\$84.59
7/16	11.0	C05-E110BRU-01	\$87.29

BRUSHED STAINLESS STEEL – ACCESSORIES

Height (in)	Height (mm)	Item Number	Price Each
<b>Outside Corner</b>			
Fits all sizes		C05-EXXB04-04	\$23.54
<b>Inside Corner</b>			
Fits all sizes		C05-EXXB08-08	\$23.54
<b>Connector</b>			
9/32	7.0	C05-E070BRU-14	\$24.73
11/32	9.0	C05-E090BRU-14	\$24.73
7/16	11.0	C05-E110BRU-14	\$24.73
<b>Left End Cap</b>			
9/32	7.0	C05-E070BRU-16	\$24.73
11/32	9.0	C05-E090BRU-16	\$24.73
7/16	11.0	C05-E110BRU-16	\$24.73
<b>Right End Cap</b>			
9/32	7.0	C05-E070BRU-17	\$24.73
11/32	9.0	C05-E090BRU-17	\$24.73
7/16	11.0	C05-E110BRU-17	\$24.73

**COVE PROFILES MADE OF STAINLESS STEEL 304**  
**STYLE 7 – Inverted Leg**



POLISHED STAINLESS STEEL

Height (in)	Height (mm)	Item Number	Price Each
<b>Length: 8' 2-1/2" (2.5 m)</b>			
3/8	10.0	C07-E100GLO-01	\$44.44

POLISHED STAINLESS STEEL – ACCESSORIES

Height (in)	Height (mm)	Item Number	Price Each
<b>Outside Corner</b>			
Fits all sizes		C07-E100GLO-04	\$5.05
<b>Inside Corner</b>			
Fits all sizes		C07-E100GLO-08	\$5.05
<b>Connector</b>			
Fits all sizes		C07-E100GLO-15	\$4.60
<b>End Cap</b>			
Fits all sizes		C07-E100GLO-14	\$4.60

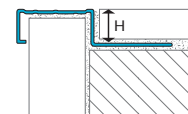


## STAIR NOSING AND TRANSITION PROFILES

PAGE 28 - 31



**STAIR NOSING PROFILES** safeguard the front edge of tiled stairways from chipping and cracking while enhancing durability. They clearly define stair edges while adding a subtle decorative touch to elevate the overall design. Options with slip-resistant tread provide added traction, ideal for projects where pedestrian safety is essential.



**STAIR NOSING PROFILES MADE OF STAINLESS STEEL 304  
STYLE 5**

POLISHED STAINLESS STEEL (GLOSS)

Height (in)	Height (mm)	Item Number	Price Each
Length: 8' 2-1/2" (2.5 m)			
11/32	9.0	SN5-E090GLO-01	\$90.68
7/16	11.0	SN5-E110GLO-01	\$92.39

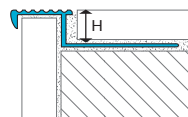


POLISHED STAINLESS STEEL (GLOSS) – ACCESSORIES

Height (in)	Height (mm)	Item Number	Price Each
End Cap			
Fits all sizes		SN5-EXXXGLO-15	\$9.13



**STAIR NOSING PROFILES MADE OF ANODIZED ALUMINUM  
STYLE 6**



SATIN ALUMINUM

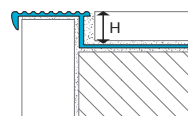
Height (in)	Height (mm)	Item Number	Price Each
Length: 8' 2-1/2" (2.5 m)			
11/32	9.0	SN6-A090SAT-01	\$23.62
7/16	11.0	SN6-A110SAT-01	\$29.00



SATIN ALUMINUM – ACCESSORIES

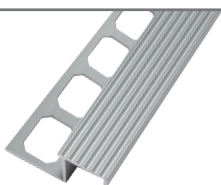
Height (in)	Height (mm)	Item Number	Price Each
Left End Caps			
11/32	9.0	SN6-A090SAT-16	\$7.27
7/16	11.0	SN6-A110SAT-16	\$7.27
Right End Caps			
11/32	9.0	SN6-A090SAT-17	\$7.27
7/16	11.0	SN6-A110SAT-17	\$7.27

**STAIR NOSING PROFILES MADE OF ANODIZED ALUMINUM  
STYLE 7**



SATIN ALUMINUM

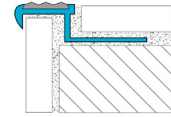
Height (in)	Height (mm)	Item Number	Price Each
Length: 8' 2-1/2" (2.5 m)			
11/32	9.0	SN7-A090SAT-01	\$38.15
7/16	11.0	SN7-A110SAT-01	\$46.82



SATIN ALUMINUM – ACCESSORIES

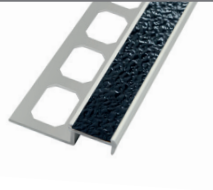
Height (in)	Height (mm)	Item Number	Price Each
Left End Caps			
11/32	9.0	SN7-A090SAT-16	\$7.27
7/16	11.0	SN7-A110SAT-16	\$7.27
Right End Caps			
11/32	9.0	SN7-A090SAT-17	\$7.27
7/16	11.0	SN7-A110SAT-17	\$7.27

**STAIR NOSING PROFILES MADE OF ANODIZED ALUMINUM  
STYLE 8**



SATIN ALUMINUM

Height (in)	Height (mm)	Item Number	Price Each
Length: 8' 2-1/2" (2.5 m)			
11/32	9.0	SN8-A090SAT-01	\$70.13
7/16	11.0	SN8-A110SAT-01	\$84.16



SATIN ALUMINUM - ACCESSORIES

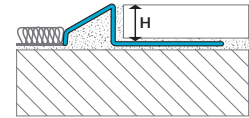
Height (in)	Height (mm)	Item Number	Price Each
End Cap			
Fits all sizes		SN8-AXXSAT-15	\$7.27



# TRANSITION PROFILES

provide a refined solution when the flooring transitions from tile to another material such as carpet, LVT, or polished concrete. Available in a range of styles, they protect tile edges on one side while accommodating varying material heights on the other. These profiles help define transitions, prevent trip hazards, and, depending on the style and size, meet ADA threshold requirements.

**TRANSITION PROFILES MADE OF STAINLESS STEEL 304  
STYLE 1 - Abutting**



POLISHED STAINLESS STEEL (GLOSS)

Height (in)	Height (mm)	Item Number	Price Each
Length: 8' 2-1/2" (2.5 m)			
5/16	8.0	TR1-E080GLO-01	\$42.54
3/8	10.0	TR1-E100GLO-01	\$46.52
1/2	12.5	TR1-E125GLO-01	\$51.62

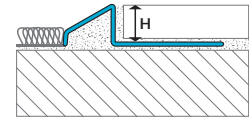


BRUSHED STAINLESS STEEL

Height (in)	Height (mm)	Item Number	Price Each
Length: 8' 2-1/2" (2.5 m)			
5/16	8.0	TR1-E080BRU-01	\$65.69
3/8	10.0	TR1-E100BRU-01	\$69.78
1/2	12.5	TR1-E125BRU-01	\$75.10



**TRANSITION PROFILES MADE OF ANODIZED ALUMINUM  
STYLE 1 - Abutting**

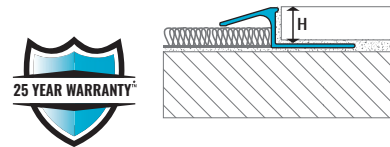


SATIN ALUMINUM

Height (in)	Height (mm)	Item Number	Price Each
Length: 8' 2-1/2" (2.5 m)			
5/16	8.0	TR1-A080SAT-01	\$18.40
3/8	10.0	TR1-A100SAT-01	\$19.34
1/2	12.5	TR1-A125SAT-01	\$25.67



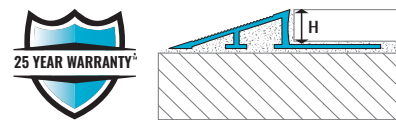
**TRANSITION PROFILES MADE OF ANODIZED ALUMINUM**  
**STYLE 2 – Overhanging**



SATIN ALUMINUM

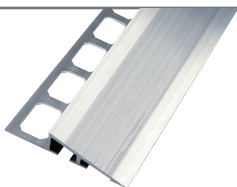
Height (in)	Height (mm)	Item Number	Price Each
<b>Length: 8' 2-1/2" (2.5 m)</b>			
5/16	8.0	TR2-A080SAT-01	\$19.08
3/8	10.0	TR2-A100SAT-01	\$20.39
1/2	12.5	TR2-A125SAT-01	\$26.28

**TRANSITION PROFILES MADE OF ANODIZED ALUMINUM**  
**STYLE 3 – Ramp**



SATIN ALUMINUM

Height (in)	Height (mm)	Item Number	Price Each
<b>Length: 8' 2-1/2" (2.5 m)</b>			
5/16	8.0	TR3-A100-65SAT	\$47.41
3/8	10.0	TR3-A125-65SAT	\$49.45
1/2	12.5	TR3-A125-90SAT	\$63.69

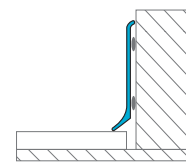


SKIRTING AND CORNER PROTECTION PROFILES

PAGE 32 - 35



**SKIRTING PROFILES** offer a sleek and functional alternative to traditional baseboards, enhancing the perimeter of any space with a clean look. Easy to install using a suitable adhesive, they can be applied over existing floors and walls, making them ideal for both new and retrofit construction. Corner, connector, and end cap accessories ensure seamless transitions to complete a professional look.



SKIRTING PROFILES MADE OF **ANODIZED ALUMINUM**

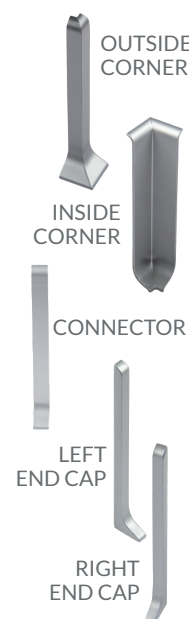
SATIN ALUMINUM

Height (in)	Height (mm)	Item Number	Price Each
Length: 8' 2-1/2" (2.5 m)			
2-3/8	60.0	SK1-A060SAT-01	\$27.20
3-1/8	80.0	SK1-A080SAT-01	\$33.24



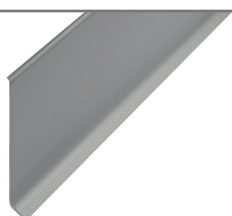
SATIN ALUMINUM – ACCESSORIES

Height (in)	Height (mm)	Item Number	Price Each
<b>Outside Corners</b>			
2-3/8	60.0	SK1-A060SAT-04	\$9.94
3-1/8	80.0	SK1-A080SAT-04	\$9.94
<b>Inside Corners</b>			
2-3/8	60.0	SK1-A060SAT-08	\$9.94
3-1/8	80.0	SK1-A080SAT-08	\$9.94
<b>Connectors</b>			
2-3/8	60.0	SK1-A060SAT-14	\$8.74
3-1/8	80.0	SK1-A080SAT-14	\$8.74
<b>Left End Caps</b>			
2-3/8	60.0	SK1-A060SAT-16	\$8.74
3-1/8	80.0	SK1-A080SAT-16	\$8.74
<b>Right End Caps</b>			
2-3/8	60.0	SK1-A060SAT-17	\$8.74
3-1/8	80.0	SK1-A080SAT-17	\$8.74



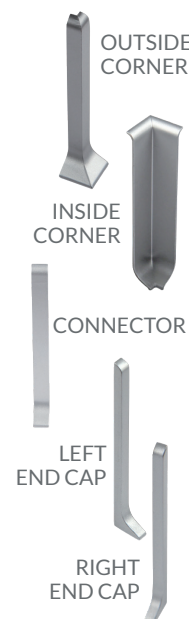
SATIN NICKEL

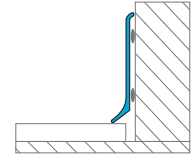
Height (in)	Height (mm)	Item Number	Price Each
Length: 8' 2-1/2" (2.5 m)			
2-3/8	60.0	SK1-A060SNI-01	\$27.20
3-1/8	80.0	SK1-A080SNI-01	\$33.24



SATIN NICKEL – ACCESSORIES

Height (in)	Height (mm)	Item Number	Price Each
<b>Outside Corners</b>			
2-3/8	60.0	SK1-A060SNI-04	\$9.94
3-1/8	80.0	SK1-A080SNI-04	\$9.94
<b>Inside Corners</b>			
2-3/8	60.0	SK1-A060SNI-08	\$9.94
3-1/8	80.0	SK1-A080SNI-08	\$9.94
<b>Connectors</b>			
2-3/8	60.0	SK1-A060SNI-14	\$8.74
3-1/8	80.0	SK1-A080SNI-14	\$8.74
<b>Left End Caps</b>			
2-3/8	60.0	SK1-A060SNI-16	\$8.74
3-1/8	80.0	SK1-A080SNI-16	\$8.74
<b>Right End Caps</b>			
2-3/8	60.0	SK1-A060SNI-17	\$8.74
3-1/8	80.0	SK1-A080SNI-17	\$8.74





SKIRTING PROFILES MADE OF ANODIZED ALUMINUM

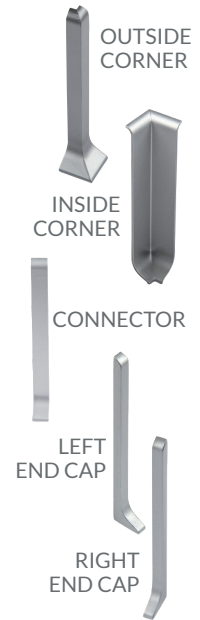
BRUSHED STAINLESS STEEL (LOOK)

Height (in)	Height (mm)	Item Number	Price Each
Length: 8' 2-1/2" (2.5 m)			
2-3/8	60.0	SK1-A060BSL-01	\$84.07
3-1/8	80.0	SK1-A080BSL-01	\$110.28



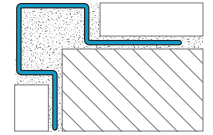
BRUSHED STAINLESS STEEL (LOOK) - ACCESSORIES

Height (in)	Height (mm)	Item Number	Price Each
<b>Outside Corners</b>			
2-3/8	60.0	SK1-A060BSL-04	\$9.94
3-1/8	80.0	SK1-A080BSL-04	\$9.94
<b>Inside Corners</b>			
2-3/8	60.0	SK1-A060BSL-08	\$9.94
3-1/8	80.0	SK1-A080BSL-08	\$9.94
<b>Connectors</b>			
2-3/8	60.0	SK1-A060BSL-14	\$8.74
3-1/8	80.0	SK1-A080BSL-14	\$8.74
<b>Left End Caps</b>			
2-3/8	60.0	SK1-A060BSL-16	\$8.74
3-1/8	80.0	SK1-A080BSL-16	\$8.74
<b>Right End Caps</b>			
2-3/8	60.0	SK1-A060BSL-17	\$8.74
3-1/8	80.0	SK1-A080BSL-17	\$8.74



**CORNER PROTECTION PROFILES** provide durable reinforcement for exposed outside corners, shielding them from impacts and collisions. This makes them an excellent choice for high-traffic commercial spaces. Available in a variety of styles, they can be installed with new tile or applied over existing finishes, ensuring both protection and a polished, finished look for any space.

### CORNER PROTECTION PROFILES MADE OF STAINLESS STEEL 304 STYLE 1

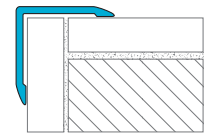


#### BRUSHED STAINLESS STEEL

Height (in)	Height (mm)	Item Number	Price Each
Length: 10' (3.0 m)			
9/32	7.0	CP1-E070BRU-02	\$176.91
11/32	9.0	CP1-E090BRU-02	\$186.22
7/16	11.0	CP1-E110BRU-02	\$204.84



### CORNER PROTECTION PROFILES MADE OF ANODIZED ALUMINUM STYLE 2

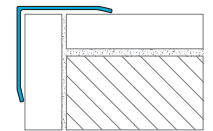


#### POLISHED STAINLESS STEEL (GLOSS)

Width (in)	Width (mm)	Item Number	Price Each
Length: 8' 2-1/2" (2.5 m)			
1	250	CP2-A250SAT-01	\$76.99



### CORNER PROTECTION PROFILES MADE OF STAINLESS STEEL 304 STYLE 3



#### POLISHED STAINLESS STEEL (GLOSS)

Width (in)	Width (mm)	Item Number	Price Each
Length: 8' 2-1/2" (2.5 m)			
1	250	CP3-E250GLO-01	\$68.74
1-3/16	300	CP3-E300GLO-01	\$79.42
1-9/16	400	CP3-E400GLO-01	\$102.15



#### BRUSHED STAINLESS STEEL

Width (in)	Width (mm)	Item Number	Price Each
Length: 8' 2-1/2" (2.5 m)			
1	250	CP3-E250BRU-01	\$89.38
1-3/16	300	CP3-E300BRU-01	\$103.27
1-9/16	400	CP3-E400BRU-01	\$132.77

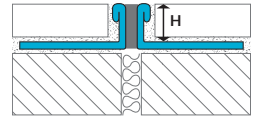




EXPANSION & MOVEMENT JOINT PROFILES

PAGE 36 - 38

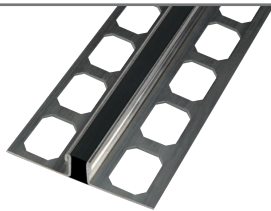
**EXPANSION & MOVEMENT JOINT PROFILES** are designed to accommodate tile expansion and contraction in large areas or movement at thresholds when extending tile between rooms. Properly placed, they help reduce stress on the tile and grout, preventing issues such as cracking, delamination, or tenting. These profiles offer a practical alternative to caulked joints, streamlining installation for a faster and more efficient process.



### EXPANSION & MOVEMENT JOINT PROFILES MADE OF STAINLESS STEEL 304

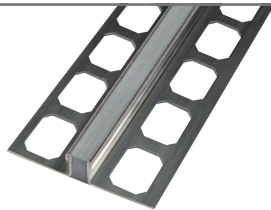
#### STAINLESS STEEL WITH BLACK INFILL

Height (in)	Height (mm)	Item Number	Price Each
<b>Length: 8' 2-1/2" (2.5 m)</b>			
5/16	8.0	EJ1-E080BLK-01	\$77.77
3/8	10.0	EJ1-E100BLK-01	\$92.98
7/16	11.0	EJ1-E110BLK-01	\$95.28
1/2	12.5	EJ1-E125BLK-01	\$95.76



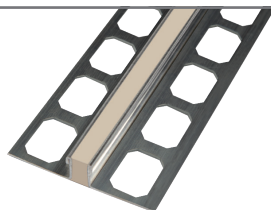
#### STAINLESS STEEL WITH GREY INFILL

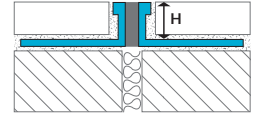
Height (in)	Height (mm)	Item Number	Price Each
<b>Length: 8' 2-1/2" (2.5 m)</b>			
5/16	8.0	EJ1-E080GRE-01	\$77.77
3/8	10.0	EJ1-E100GRE-01	\$92.98
7/16	11.0	EJ1-E110GRE-01	\$95.28
1/2	12.5	EJ1-E125GRE-01	\$95.76



#### STAINLESS STEEL WITH LIGHT BEIGE INFILL

Height (in)	Height (mm)	Item Number	Price Each
<b>Length: 8' 2-1/2" (2.5 m)</b>			
5/16	8.0	EJ1-E080LBE-01	\$77.77
3/8	10.0	EJ1-E100LBE-01	\$92.98
7/16	11.0	EJ1-E110LBE-01	\$95.28
1/2	12.5	EJ1-E125LBE-01	\$95.76





EXPANSION & MOVEMENT JOINT PROFILES MADE OF ALUMINUM

ALUMINUM WITH BLACK INFILL

Height (in)	Height (mm)	Item Number	Price Each
Length: 8' 2-1/2" (2.5 m)			
5/16	8.0	EJ1-A080BLK-01	\$44.55
3/8	10.0	EJ1-A100BLK-01	\$46.49
7/16	11.0	EJ1-A110BLK-01	\$48.61
1/2	12.5	EJ1-A125BLK-01	\$48.43



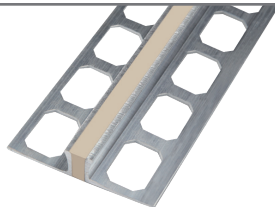
ALUMINUM WITH GREY INFILL

Height (in)	Height (mm)	Item Number	Price Each
Length: 8' 2-1/2" (2.5 m)			
5/16	8.0	EJ1-A080GRE-01	\$44.55
3/8	10.0	EJ1-A100GRE-01	\$46.49
7/16	11.0	EJ1-A110GRE-01	\$48.61
1/2	12.5	EJ1-A125GRE-01	\$48.43



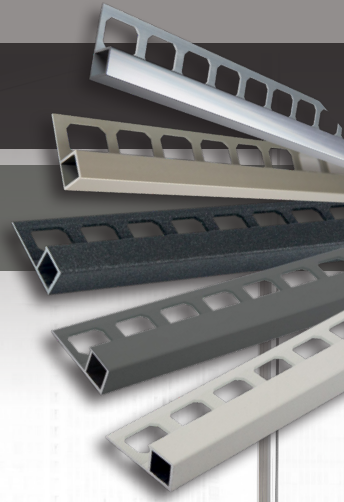
ALUMINUM WITH LIGHT BEIGE INFILL

Height (in)	Height (mm)	Item Number	Price Each
Length: 8' 2-1/2" (2.5 m)			
5/16	8.0	EJ1-A080LBE-01	\$44.55
3/8	10.0	EJ1-A100LBE-01	\$46.49
7/16	11.0	EJ1-A110LBE-01	\$48.61
1/2	12.5	EJ1-A125LBE-01	\$48.43



# Take Your Design to the Edge™

*Now offering  
Profiles & Trims!*



**One Source. Limitless Capabilities.**

With an extensive selection of shapes, sizes, and finishes for profiles and trims, we make it even easier for you to find a complete system solution from the substrate up. Unlock a world of possibilities with LATICRETE.

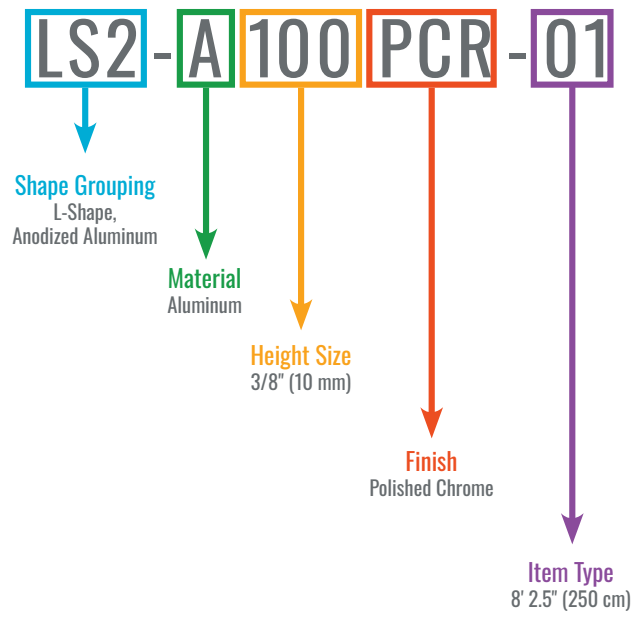


Learn more at  
[laticrete.com/profiles](https://laticrete.com/profiles)  
or scan for more information.



PART NUMBER EXPLANATION & CODES

Part Number Example  
**LS2-A100PCR-01**



PART NUMBER EXPLANATION & CODES

Code for Shape Type

CODE	SHAPE DESCRIPTION
LS1	L-SHAPE EDGE PROFILE MADE OF ALUMINUM
LS2	L-SHAPE EDGE PROFILE MADE OF ANODIZED ALUMINUM
LS5	L-SHAPE EDGE PROFILE MADE OF STAINLESS STEEL
SQ2	SQUARE EDGE PROFILE MADE OF ANODIZED ALUMINUM
SQ5	SQUARE EDGE PROFILE MADE OF STAINLESS STEEL
RO2	ROUND EDGE PROFILE MADE OF ANODIZED ALUMINUM
RO5	ROUND EDGE PROFILE MADE OF STAINLESS STEEL
CO1	COVE PROFILE - STYLE 1 (SINGLE-SIDED CONNECTION)
CO2	COVE PROFILE - STYLE 2 (DUAL-SIDED CONNECTION/ONE MOUNTING LEG)
CO5	COVE PROFILE - STYLE 5 (DUAL-SIDED CONNECTION/INVERTED LEG)
CO7	COVE PROFILE - STYLE 7 (DUAL-SIDED CONNECTION / INVERTED LEG)

CODE	SHAPE DESCRIPTION
SN5	STAIR NOSING PROFILE - STYLE 5
SN6	STAIR NOSING PROFILE - STYLE 6
SN7	STAIR NOSING PROFILE - STYLE 7
SN8	STAIR NOSING PROFILE - STYLE 8
SK1	SKIRTING PROFILE
TR1	TRANSITION PROFILE - STYLE 1 (ABUTTING)
TR2	TRANSITION PROFILE - STYLE 2 (OVERHANGING)
TR3	TRANSITION PROFILE - STYLE 3 (RAMP)
EJ1	EXPANSION & MOVEMENT JOINT PROFILE - STYLE 1 (7/16" WIDE)
CP1	CORNER PROTECTION - STYLE 1
CP2	CORNER PROTECTION - STYLE 2
CP3	CORNER PROTECTION - STYLE 3

Code for Material Type

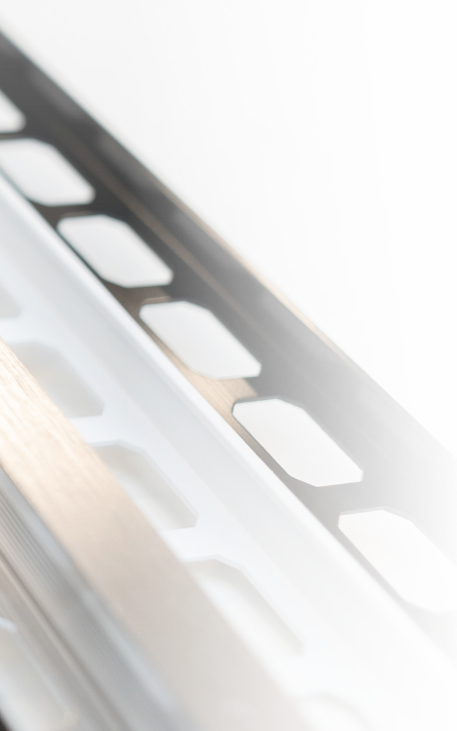
CODE	TYPE OF MATERIAL
A	ALUMINUM
E	STAINLESS STEEL 304
V	STAINLESS STEEL 316

Code for Profile Height

CODE	INCHES	MILLIMETERS
020	5/64	2.0
030	1/8	3.0
045	3/16	4.5
060	1/4	6.0
070	9/32	7.0
080	5/16	8.0
090	11/32	9.0
100	3/8	10.0
110	7/16	11.0
120	15/32	12.0
125	1/2	12.5
150	9/16	15.0
160	5/8	16.0
175	11/16	17.5
200	3/4	20.0
210	13/16	21.0
225	7/8	22.5
250	1	25.0
300	1-3/16	30.0

Code for Part Type

CODE	PART DESCRIPTION
01	8'-2.5" PROFILE
02	10' PROFILE
04	OUTSIDE CORNER
08	INSIDE CORNER
11	OUTSIDE/INSIDE CORNER
14	CONNECTOR
15	END CAP
16	LEFT END CAP
17	RIGHT END CAP



FINISH AND COLOR SWATCHES & CODES

**STAINLESS STEEL**

Polished  
Stainless Steel  
(Gloss)  
**GLO**

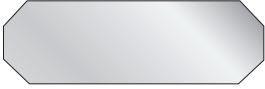


Brushed  
Stainless  
Steel  
**BRU**



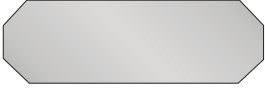
**ALUMINUM**

Natural  
Aluminum  
**NAT**



**ANODIZED ALUMINUM**

Satin  
Aluminum  
**SAT**



Polished  
Chrome  
**PCR**



Brushed  
Chrome  
**BCR**



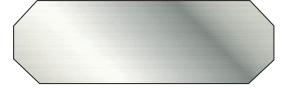
Satin Nickel  
**SNI**



Polished  
Nickel  
**PNI**



Brushed  
Nickel  
**BNI**



Brushed  
Stainless  
Steel (Look)  
**BSL**



**INFILL COLORS FOR EXPANSION & MOVEMENT JOINT PROFILES**

Light Beige  
**LBE**



Grey  
**GRE**



Black  
**BLK**



Finishes and color swatches are guides only. LATICRETE does not warrant color matching to this color chart or to any color guide produced. Actual shade and texture will depend on job site conditions, lighting, installation techniques and types/color of the product used, and may vary from the finishes/colors shown. Verify actual appearance and compatibility before installing. No claims for color shade variations will be honored.

The colors and finishes shown may not be available in all profile materials, shapes, and sizes. Contact customer service or your LATICRETE Sales Representative for confirmation.

## PROFILES MATERIAL CHARACTERISTICS & MAINTENANCE

---

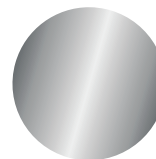
### STAINLESS STEEL 304/316

---

The ultimate in durability, stainless steel exhibits superior resistance to a range of chemicals including diluted acids and alkalis. Caution should be exercised to prevent contact with hydrochloric acid. Always use tools specifically designed for cutting stainless steel and avoid cross-contamination from other ferrous materials. Prompt removal of burrs is imperative to mitigate the risk of potential flash rusting. For applications where superior corrosion and chemical resistance are necessary, stainless steel profiles are available in grade 316L.



Scan for more on  
stainless steel



### ALUMINUM

---

Engineered for balanced strength and resilience, natural aluminum profiles are designed to excel in a range of applications. The material's adaptability and sleek appearance make it a popular choice. Natural aluminum profiles are sensitive to alkaline chemicals found in cementitious mortars and grouts resulting in oxidation spots that are very difficult to remove. Immediately after installation, remove any mortar or grout residue from visual surfaces using soap and clean water. For regular maintenance, opt for pH-neutral cleaning solutions and avoid the use of acidic or abrasive cleaners.



### ANODIZED ALUMINUM

---

Anodizing is a surfacing technique that elevates aluminum profiles to new heights of visual appeal. With an array of popular finishes, anodized aluminum can transform ordinary spaces, however, they are sensitive to scratches and potential discoloration when exposed to alkaline chemicals found in cementitious mortars and grouts. Immediately after installation, remove any mortar or grout residue from visible surfaces using soap and clean water. For regular maintenance, opt for pH-neutral cleaning solutions and avoid the use of acidic or abrasive cleaners.



## INSTALLATION AND MAINTENANCE

---

- When laying and grouting metal profiles and trims, adhesive and grout must be removed immediately with fresh clean water and a soft, non-scratching sponge in order to avoid corrosion damage to the profiles.
- Do not use acidic (e.g. cement residue remover) or alkaline cleaning agents in combination with all metal profiles.
- Clean with fresh water and dry a linen cloth.

SERVICE TERMS

**ORDER PLACEMENT**

- Purchases for LATICRETE Profiles & Trims **must be placed on a separate purchase order** and cannot be combined on purchase orders with other LATICRETE products.
- Purchase orders are accepted via EDI and E-Mail at [ProfileOrders@laticrete.com](mailto:ProfileOrders@laticrete.com).
- Purchase orders must contain the following:
  1. Purchase order number (required)
  2. Ship to full name, address and phone number
  3. Purchasing agent contact name and phone number
  4. LATICRETE item numbers, quantity, unit of measure & unit price
  5. Customer requested ship date if needed
  6. Detailed shipping instructions or special requests (ex. Next day air, lift gate)

**PAYMENT TERMS**

- Follow existing customer specific payment terms.
- Past due accounts are subject to a 1.5% per month charge and will be placed on Collect on Delivery, or Collect in Advance.

**DELIVERY TERMS**

- Orders returned to LATICRETE due to Customer’s inability to accept or unload are subject to re-consignment, detention or holding fees to be charged back to the customer.
- FOB LATICRETE Plant

**SPECIAL ORDER, CUSTOM OR ANYCOLOR ITEMS**

- A written purchase order is required.
- Special order, Custom or AnyColor items are not cancelable or returnable.
- Special Order, Custom or AnyColor orders ship directly to Distributor and may not be picked-up or drop shipped to end user.

**SHIPPING / FREIGHT CHARGES**

**Standard Freight (Best Method)**

Order Value	Up to \$500	\$500-\$999	\$1000-\$1999	\$2000-\$2999	>\$3000
Standard Freight Fee	\$50 USD \$75 CAD	\$75 USD \$100 CAD	\$100 USD \$150 CAD	\$125 USD \$200 CAD	Free

**Express Freight**

Order Value	Up to \$500	\$500-\$999	\$1000-\$1999	\$2000-\$2999	>\$3000
Next Day Freight Fee	\$150 USD \$200 CAD	\$225 USD \$300 CAD	\$300 USD	\$375 USD	Priced at Shipment
2nd Day Freight Fee	\$115 USD \$150 CAD	\$172.50 USD \$225 CAD	\$230 USD \$300 CAD	\$278.50 USD \$400 CAD	Priced at Shipment

- LATICRETE Profiles & Trims ship with Standard Freight Fee (Best Method) unless otherwise noted on purchase order.
- Fees for Standard and Express Freight order value calculated based on published MSRP price.
- LATICRETE Profiles & Trims will always ship via LATICRETE’s preferred carrier prepaid freight. Freight is charged to the order accordingly.
- 10’ profiles are not eligible for Standard Freight Fee Rates and are priced at the time of order placement.
- Third-party and drop-ship orders are subject to an additional 10% handling fee.
- Orders received by 11am will ship the same day.
- Orders received after 11am will ship the following business day.
  - Shipping windows start when order is released from any holds and are subject to product availability.
  - Holidays and weekends are excluded from calculations.
  - LATICRETE does not provide unloading equipment for shipments.

## SERVICE TERMS CONTINUED

**CHANGES TO PURCHASE ORDERS PLACED**

- **Additions** of another item or quantity from existing purchase orders must be made to Customer Service via email at [ProfileOrders@laticrete.com](mailto:ProfileOrders@laticrete.com), additions will be processed as a separate order.
- **Removal/Cancellations** for same day shipments are not available.
- **Change requests** after purchase orders are processed are very limited and will not be possible after the order has been released to the shipping department. If possible, the ship date will be “reset” to ship the next business day.
  - May be subject to a 10% fee & carrier cancellation fee (carrier cancellation fees ranging from \$250-\$350) if picked, packed and/or scheduled.

**BACKORDERS**

- Communicated to customers via automatic electronic backorder notifications email.
- Once the backorder becomes available, items will ship via freight prepaid.
- All backorders will remain open unless requested to cancel via email to the customer service department at [ProfileOrders@laticrete.com](mailto:ProfileOrders@laticrete.com).

**CLAIMS / RETURNS**

- LATICRETE shall not accept any returns unless specifically authorized in writing, which may be granted or withheld in LATICRETE's sole and absolute discretion.
- Claims submission about shortages, overages, or damages are required to be reported to Customer Service at [ProfileOrders@laticrete.com](mailto:ProfileOrders@laticrete.com) within 72 hours from receipt of shipment, any claims made after 72 hours of receipt will be denied.
- Claims require the following information:
  1. Purchase order number
  2. LATICRETE item #
  3. Quantity
  4. Reason for claim
    - a. **If damaged claim** – Must provide a supporting photo(s) of the damaged product, a copy of the delivery receipt noting damage, and must note damage on the carrier's copy of the delivery receipt.
    - b. **If shortage claim** – Receiver must sign the carrier's copy of the delivery receipt noting shortage of the product.
    - c. **If wrong product received** – Must provide a supporting photo(s) of the product received. The Customer Service Department will send you an RMA for the wrong product and enter a new order to be shipped as soon as possible.
- 5. Any returns exceeding a total of \$5K are subject to review prior to the issuance of a return material authorization back to LATICRETE (RMA). Return authorizations expire if not returned

within 30 days of issuance.

6. Returns are subject to the lowest invoice price charged
7. Customer is responsible for cost of freight on returns

\*All Credits are subject to approval and will be issued as an A/R credit.\*

**RETURN GUIDELINES**

- Material returns require an RMA/RGA request for a return #.
- Return request must contain the following information for processing:
  1. Purchase order number
  2. LATICRETE item number
  3. Quantity
  4. Reason for return
- No restocking fee for returns requested within 72 hours from invoice date.
- 30% restocking fee applies for returns greater than 72 hours from invoice date.
- 10% additional restocking fee applies if repackaging or rework is required.
- 100% restocking fee applies for any return product that is identified as scrap.
- Returns denied if:
  - Greater than 3 months from invoice date
  - Discontinued or obsolete material
  - Damaged or expired material
- Customer is responsible for cost of freight on returns.
- No Credit or Refund will be given on any returned product that is identified as scrap.

**NOTIFICATIONS**

- Electronic Order Confirmation, Shipping & Backorder Acknowledgments are available, contact Customer Service at [ProfileOrders@laticrete.com](mailto:ProfileOrders@laticrete.com) to request or update your contact information.
- Electronic invoices are available, contact Accounts Receivable at [LaticreteAR@laticrete.com](mailto:LaticreteAR@laticrete.com) to request or update existing contacts.
- For any of your customer service needs relating to LATICRETE Profiles & Trims, please contact customer service at [ProfileOrders@laticrete.com](mailto:ProfileOrders@laticrete.com).
- Terms and conditions are subject to change. Please contact your Sales or Customer Service Representative for the latest version.

**COMPLIANCE**

You shall comply with all laws, rules, orders and regulations of governmental authorities applicable to the sale of products by LATICRETE to customer, including all applicable anti-corruption and export control laws of the United States and any other jurisdiction applicable to your activities.

NOTES

---

NOTES

---



For more information visit  
[laticrete.com/profiles](https://laticrete.com/profiles)