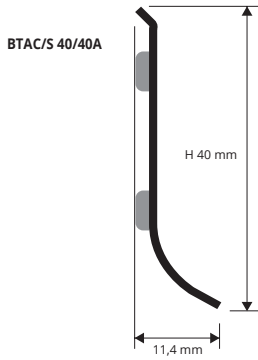


SKIRTING 40

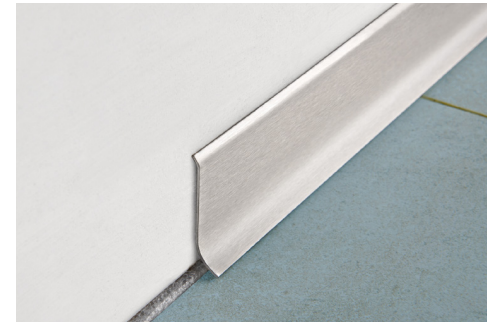
POLISHED AND SATINED
STAINLESS STEEL AISI 304/1.4301-V2A

SKIRTING 40 made in stainless steel AISI 304/1.4301-V2A in height 40 mm. Available with or without adhesive. Superior aesthetic quality, extremely strong and easy to lay, it is ideal for all public and private environments that require high standards of hygiene and image. Used increasingly more often in contrast combinations with wood, carpeted floors, etc. for an unmistakable hi-tech effect. In order to facilitate and to perfect the laying process, internal and external angles, plugs and junctions are recommended.



POLISHED STAINLESS STEEL AISI 304/1.4301-V2A
with protective film - bar length 2 lm - pack. 25 Pcs - 50 lm

| Article | H mm | | |
|---------------------|------|--|--|
| BTAC 40A (adhesive) | 40 | | |
| BTAC 40 | 40 | | |



SATINED STAINLESS STEEL AISI 304/1.4301-V2A
with protective film - bar length 2 lm - pack. 25 Pcs - 50 lm

| Article | H mm | | |
|----------------------|------|--|--|
| BTACS 40A (adhesive) | 40 | | |
| BTACS 40 | 40 | | |

SUITABLE FOR USE IN CONTACT WITH FOODSTUFFS

EXAMPLES OF LAYING



LAYING INSTRUCTIONS

1. Choose the "SKIRTING 40" also choose with or without adhesive. 2. Cut the profile to the required length, taking care to calculate the width of the inside-outside corner joints. 3. For the self-adhesive version, the surface must be smooth, grease-free and not porous. It is not recommended for plaster and mortar surfaces (version without adhesive is better, using fast-setting acrylic silicone which is suitable for fixing aluminium to mortar - plaster, etc.). 4. Use the corner linking elements-joints and right and left end caps to facilitate laying.

USE PROBAND FIX FOR FIXING THE PROFILE TO THE WALL



COLOURS



CORNERS, END CAPS AND JOINTS

STEEL and VARNISHED METAL

EDGE COVER VARNISHED METAL



RIZCT... 40/...
Internal corner



REZCT... 40/...
external corner

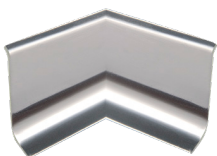


GIZCT... 40/...
joint

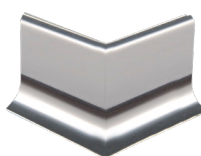


TPZCT... 40/...
end caps

PRE-WELDED



RI... 40/...
internal corner



RE... 40/...
external corner

VARNISHED METAL - EDGE COVER CORNERS - articles not for sale singly

INTERNAL/EXTERNAL CORNER - EDGE COVER VARNISHED METAL POLISHED STEEL EFFECT

| Article | HxL mm | pack. 2Pcs | pack. 5Pcs |
|-----------------------|---------|------------|------------|
| RIZCTAC 40/... (int.) | 40 x 20 | | |
| REZCTAC 40/... (ext.) | 40 x 20 | | |

JOINT - EDGE COVER

VARNISHED METAL POLISHED STEEL EFFECT

| Article | H mm | pack. 2Pcs | pack. 5Pcs |
|----------------|------|------------|------------|
| GIZCTAC 40/... | 40 | | |

Choose the desired packaging.

E.g.: RIZCTAC 40/2 (pack. 2 Pcs) - RIZCTAC 40/5 (pack. 5 Pcs)

END CAPS R / L - EDGE COVER - VARNISHED METAL POLISHED STEEL EFFECT - pack. 4Pcs (2 R + 2 L) / 10Pcs (5 R + 5 L)

| Article | H mm | pack. 4Pcs | pack. 10Pcs |
|----------------|------|------------|-------------|
| TPCCTAC 40/... | 40 | | |

Choose the desired packaging.

E.g.: TPCCTAC 40/2 (pack. 4 Pcs: 2 right + 2 left)
TPCCTAC 40/5 (pack. 10 Pcs: 5 right + 5 left)

INTERNAL/EXTERNAL CORNER - EDGE COVER VARNISHED METAL SATINED STAINLESS ST. EFFECT

| Article | HxL mm | pack. 2Pcs | pack. 5Pcs |
|------------------------|---------|------------|------------|
| RIZCTACS 40/... (int.) | 40 x 20 | | |
| REZCTACS 40/... (ext.) | 40 x 20 | | |

JOINT - EDGE COVER

VARNISHED METAL SATINED STAINLESS ST. EFFECT

| Article | H mm | pack. 2Pcs | pack. 5Pcs |
|-----------------|------|------------|------------|
| GIZCTACS 40/... | 40 | | |

Choose the desired packaging.

E.g.: RIZCTACS 40/2 (pack. 2 Pcs) - RIZCTACS 40/5 (pack. 5 Pcs)

END CAPS R / L - EDGE COVER - VARNISHED METAL SATINED STAINLESS ST. EFFECT - pack. 4Pcs (2 R + 2 L) / 10Pcs (5 R + 5 L)

| Article | H mm | pack. 4Pcs | pack. 10Pcs |
|-----------------|------|------------|-------------|
| TPCCTACS 40/... | 40 | | |

Choose the desired packaging.

E.g.: TPCCTACS 40/2 (pack. 4 Pcs: 2 right + 2 left)
TPCCTACS 40/5 (pack. 10 Pcs: 5 right + 5 left)

STEEL AISI 304/1.4301-V2A - FLUSH CORNERS - articles not for sale singly

INTERNAL/EXTERNAL CORNER FLUSH PRE-WELDED - POLISHED STEEL EFFECT

| Article | HxL mm | pack. 2Pcs | pack. 5Pcs |
|--------------------|---------|------------|------------|
| RIAC 40/... (int.) | 40 x 50 | | |
| REAC 40/... (ext.) | 40 x 50 | | |

Choose the desired packaging.

E.g.: RIAC 40/2 (pack. 2 Pcs) - RIAC 40/5 (pack. 5 Pcs)

INTERNAL/EXTERNAL CORNER FLUSH PRE-WELDED - SATINED STAINLESS STEEL

| Article | HxL mm | pack. 2Pcs | pack. 5Pcs |
|---------------------|---------|------------|------------|
| RIACS 40/... (int.) | 40 x 50 | | |
| REACS 40/... (ext.) | 40 x 50 | | |

Choose the desired packaging.

E.g.: RIACS 40/2 (pack. 2 Pcs) - RIACS 40/5 (pack. 5 Pcs)